

**YOUR
NAME
HERE**

For Sale

New plug and play medical space

- Freestanding building located at the intersection of High Street and the Mt. Holly bypass (Rt. 541)
- Excellent visibility and signage
- Gross building area - 3,571 sf.
- Year built - 2017
- Parking - Generous parking (36 parking spaces and 4 handicapped spaces)
- Site size - 1.15 acres (162' wide x 310' deep)
- Zoning - B4
- Traffic count - 31,153 average weekday daily

	1 Mile	3 Mile	5 Mile
Population Estimate	8,298	36,369	89,532
HH Estimate	2,918	13,313	32,851
Average HH Income	\$104,002	\$101,486	\$104,633
Median HH Income	\$84,237	\$84,360	\$84,676

**605 High Street
Mount Holly, NJ 08060**

Rick Widerman
+1 856 324 5301
rick.widerman@am.jll.com

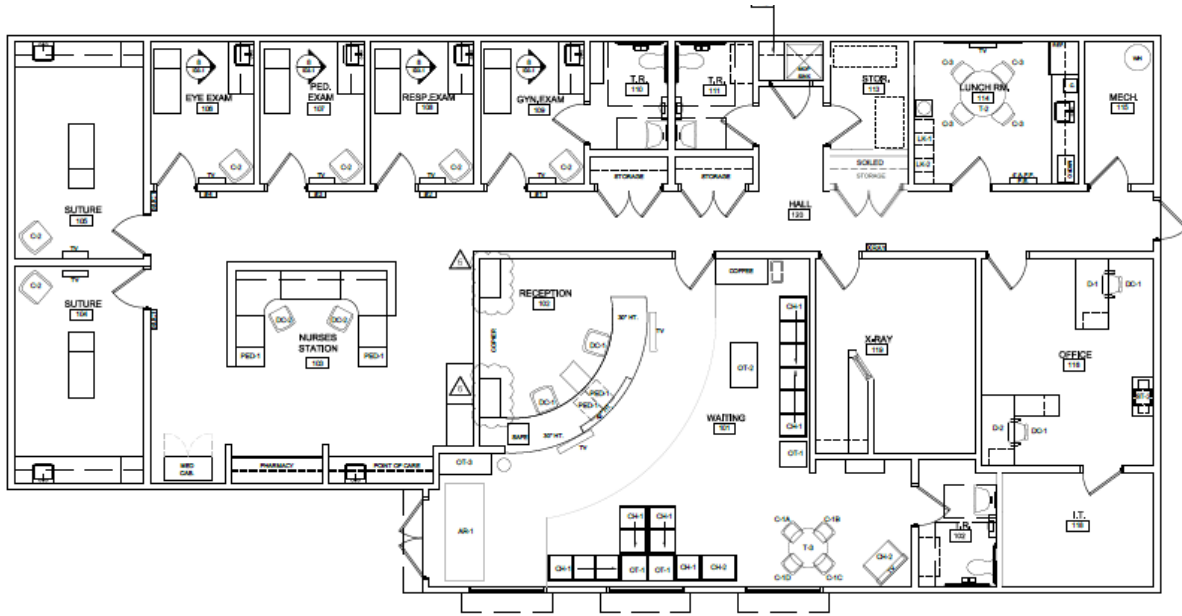
Dan Close
+1 856 324 5306
dan.close@am.jll.com

JLL | Jones Lang LaSalle Americas, Inc.
220 Lake Drive East, Suite 102
Cherry Hill, NJ 08002
+1 856 324 5300
jll.com/philadelphia



605 High Street

Mount Holly, NJ 08060



DISCLAIMER
Although information has been obtained from sources deemed reliable, neither Owner nor JLL makes any guarantees, warranties or representations, express or implied, as to the completeness or accuracy as to the information contained herein. Any projections, opinions, assumptions or estimates used are for example only. There may be differences between projected and actual results, and those differences may be material. The Property may be withdrawn without notice. Neither Owner nor JLL accepts any liability for any loss or damage suffered by any party resulting from reliance on this information. If the recipient of this information has signed a confidentiality agreement regarding this matter, this information is subject to the terms of that agreement. ©2020. Jones Lang LaSalle IP, Inc. All rights reserved.

