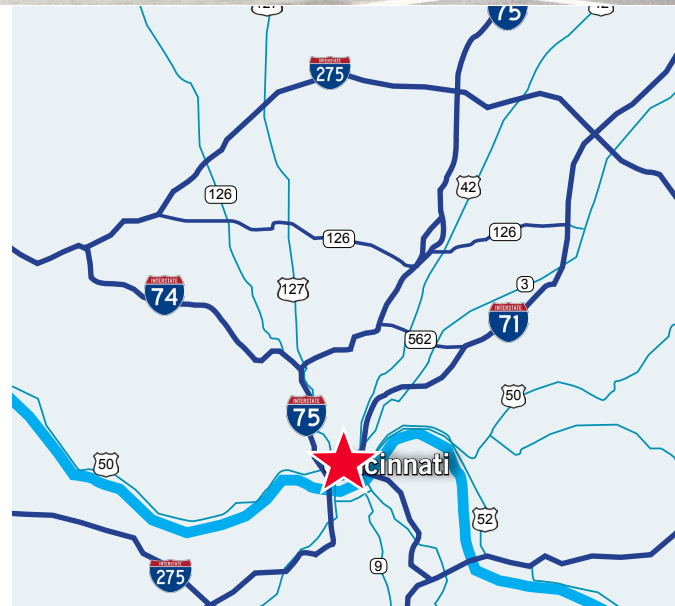




## 1,150 - 3,200 SF Available

### Property Highlights

- **3,200 SF of Restaurant Space on the corner of Elm & 7th Street - \$15.00/PSF NNN - Includes all FF&E**
- **1,150 & 1,730 SF of great retail or small office use - \$13.00-\$17.00/PSF NNN**
- Downtown streetfront space on 7th Street between Race & Elm
- Located in the heart of Downtown Cincinnati, 1 block north of the new 84.51<sup>o</sup> (dunnhumby) headquarters
- Surrounded by multiple apartment buildings: Groton Lofts, Shilito Lofts, The Gramercy and The Greenwich
- Two blocks from Fountain Square & nearest Streetcar stop



#### Terry Ohnmeis

Director  
+1 513 763 3059  
terry.ohnmeis@cushwake.com

#### Andrew Sellet

Senior Director  
+1 513 763 3053  
andrew.sellet@cushwake.com

Visit all our listings at:  
[www.cincyretailteam.com](http://www.cincyretailteam.com)

201 E. Fourth Street, Suite 1800  
Cincinnati, OH 45202  
main +1 513 421 4884  
fax +1 513 421 1215  
[cushmanwakefield.com](http://cushmanwakefield.com)

## Aerial



**Terry Ohnmeis**  
Director  
+1 513 763 3059  
terry.ohnmeis@cushwake.com

**Andrew Sellet**  
Senior Director  
+1 513 763 3053  
andrew.sellet@cushwake.com

Visit all our listings at:  
[www.cincyretailteam.com](http://www.cincyretailteam.com)

201 E. Fourth Street, Suite 1800  
Cincinnati, OH 45202  
main +1 513 421 4884  
fax +1 513 421 1215  
[cushmanwakefield.com](http://cushmanwakefield.com)



FOR LEASE

# The Gramercy on Garfield

700 Elm Street / Cincinnati, OH



Photos - 1,730 SF Space



Photos - 3,200 SF Restaurant



**Terry Ohnmeis**  
Director  
+1 513 763 3059  
terry.ohnmeis@cushwake.com

**Andrew Sellet**  
Senior Director  
+1 513 763 3053  
andrew.sellet@cushwake.com

Visit all our listings at:  
[www.cincyretailteam.com](http://www.cincyretailteam.com)

201 E. Fourth Street, Suite 1800  
Cincinnati, OH 45202  
main +1 513 421 4884  
fax +1 513 421 1215  
[cushmanwakefield.com](http://cushmanwakefield.com)



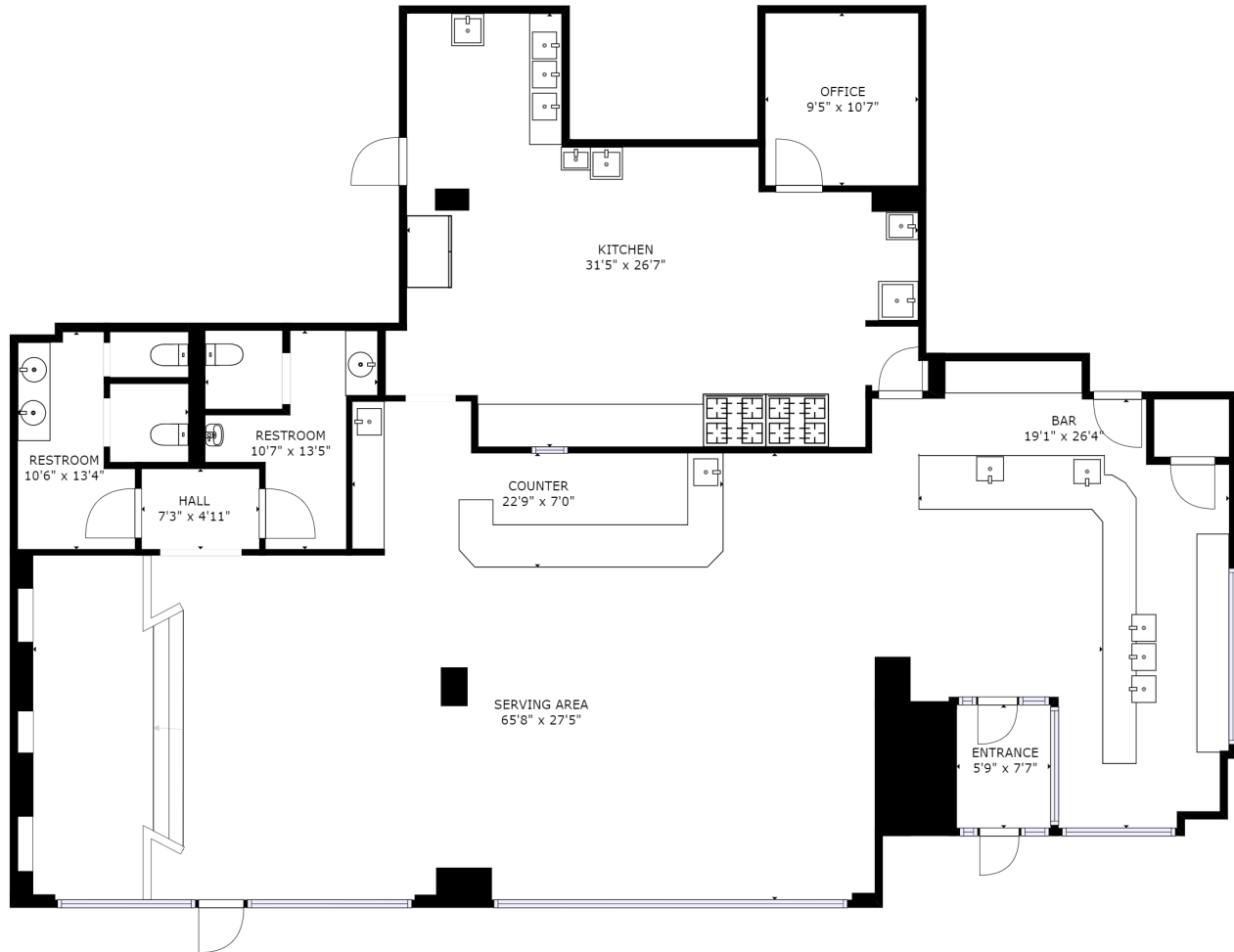
**CUSHMAN &  
WAKEFIELD**

FOR LEASE

# The Gramercy on Garfield

700 Elm Street / Cincinnati, OH

## Floor Plan - 3,200 SF Restaurant



**Terry Ohnmeis**  
Director  
+1 513 763 3059  
terry.ohnmeis@cushwake.com

**Andrew Sellet**  
Senior Director  
+1 513 763 3053  
andrew.sellet@cushwake.com

Visit all our listings at:  
[www.cincyretailteam.com](http://www.cincyretailteam.com)

201 E. Fourth Street, Suite 1800  
Cincinnati, OH 45202  
main +1 513 421 4884  
fax +1 513 421 1215  
[cushmanwakefield.com](http://cushmanwakefield.com)



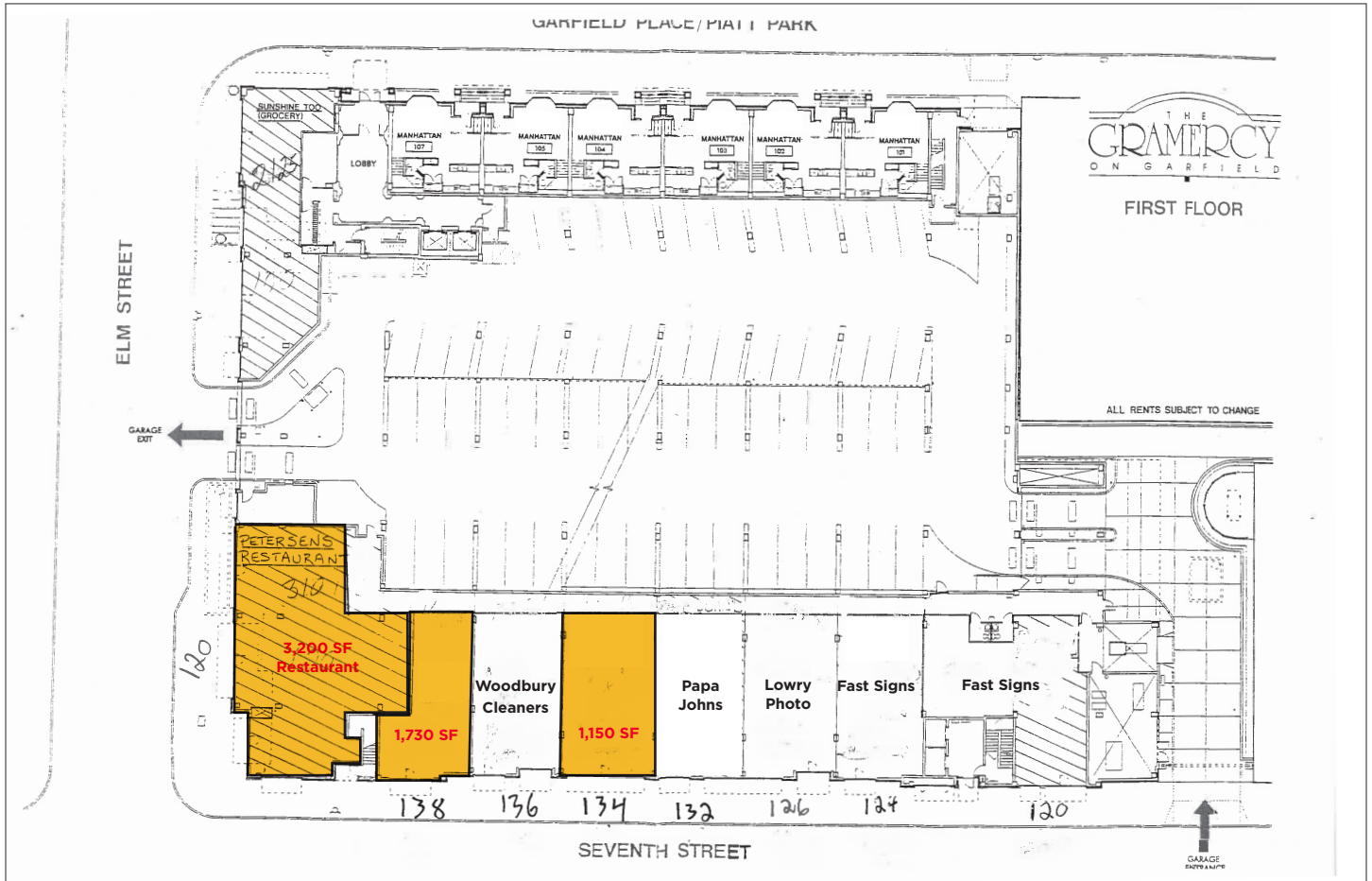
**CUSHMAN &  
WAKEFIELD**

FOR LEASE

# The Gramercy on Garfield

700 Elm Street / Cincinnati, OH

## Site Plan



## Demographics

	1 Mile	3 Mile	5 Mile
Population	21,062	152,761	329,236
AVG. HH Income	\$59,426	\$49,034	\$56,129
Daytime Population	146,775	315,124	431,544
Total Employees	138,422	257,542	318,464



### Terry Ohnmeis

Director  
+1 513 763 3059  
terry.ohnmeis@cushwake.com

### Andrew Sellet

Senior Director  
+1 513 763 3053  
andrew.sellet@cushwake.com

Visit all our listings at:  
[www.cincyretailteam.com](http://www.cincyretailteam.com)

201 E. Fourth Street, Suite 1800  
Cincinnati, OH 45202  
main +1 513 421 4884  
fax +1 513 421 1215  
[cushmanwakefield.com](http://cushmanwakefield.com)