

Barranca Medical Plaza

62 Corporate Park, Irvine, CA 92606



Leasing Manager
Bryan McKenney
(949) 478 - 0087 | LIC#01505792
Bryan@MedWestRealty.com

Leasing Manager
Casey P. Immel
(949) 278 - 5376 | LIC#01312850
Casey@MedWestRealty.com

Now Leasing

Barranca Medical Plaza

62 Corporate Park, Irvine, CA 92606

FEATURES

- 30,000 SF
- 2 Story Building
- 2 Story Atrium lobby
- Abundant Surface Parking
- Medical & Dental Suites
- High End Suite Finishes
- Professionally Managed
- Elevator Served



Leasing Manager
Bryan McKenney
(949) 478 - 0087 | LIC#01505792
Bryan@MedWestRealty.com

Leasing Manager
Casey P. Immel
(949) 278 - 5376 | LIC#01312850
Casey@MedWestRealty.com

Now Leasing

Barranca Medical Plaza

62 Corporate Park, Irvine, CA 92606

AERIAL VIEW:



**Barranca
Medical Plaza**



Peters Canyon Channel

Barranca Parkway

Corporate Park



Leasing Manager
Bryan McKenney
(949) 478 - 0087 | LIC#01505792
Bryan@MedWestRealty.com

Leasing Manager
Casey P. Immel
(949) 278 - 5376 | LIC#01312850
Casey@MedWestRealty.com

Now Leasing

Barranca Medical Plaza

62 Corporate Park, Irvine, CA 92606

SITE PLAN:



Barranca Medical Plaza

62 Corporate Park, Irvine, CA 92606

FLOOR PLAN

2nd Floor

AVAILABLE SUITE:

Suite 200 - 1,710 RSF

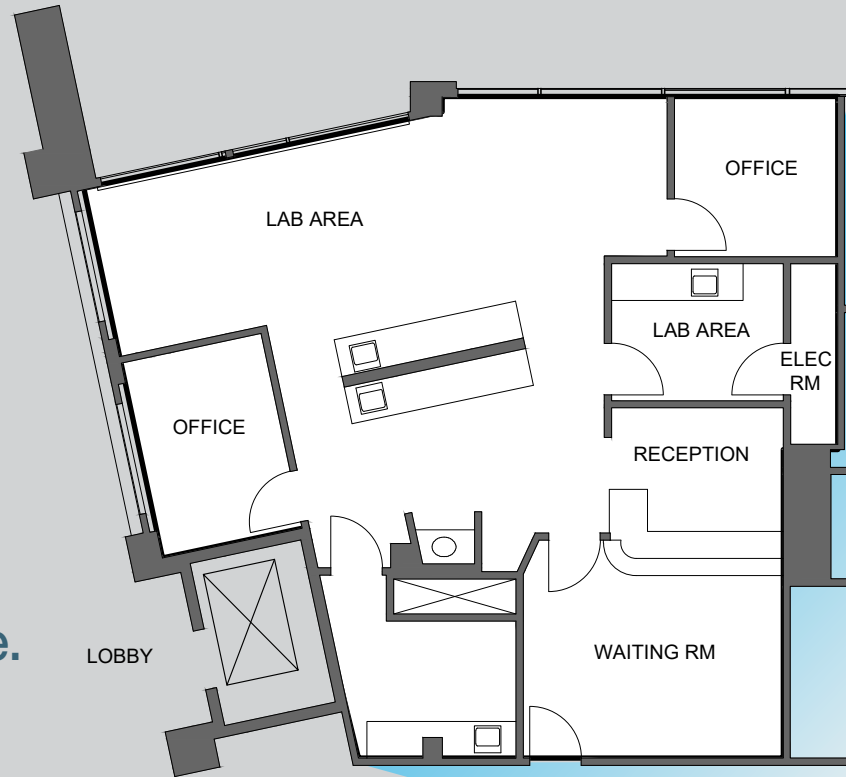
SUITE DESCRIPTION:

Formerly an orthodontist suite
& currently an ophthalmology suite.

Reception/Admin, Lab Area,
2 Offices, Break Room, &
Opera Area

LEASE RATE:

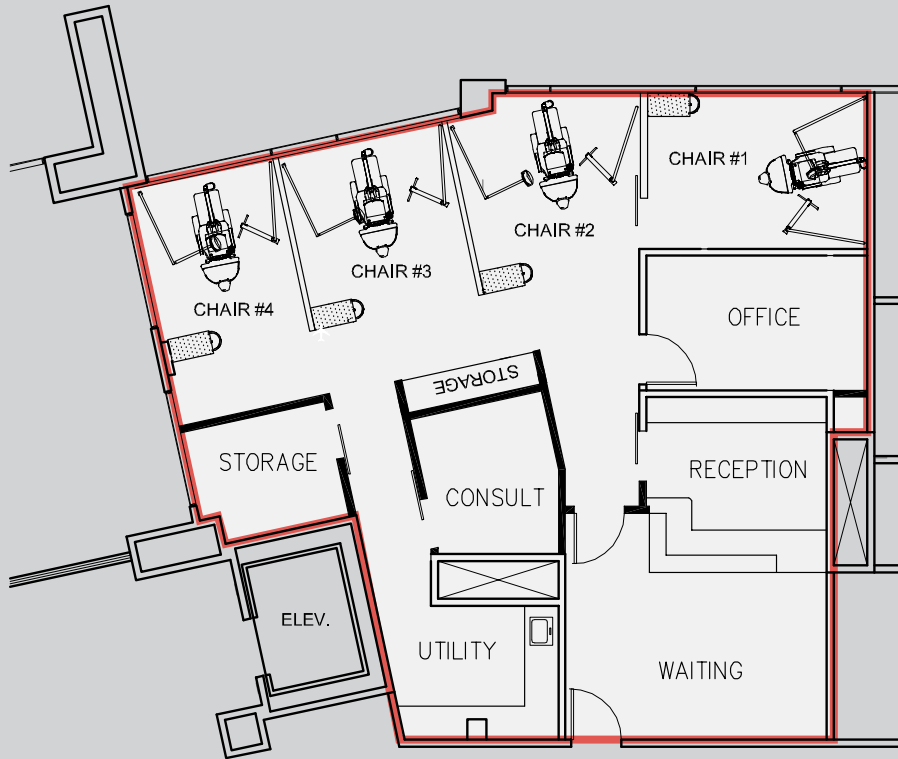
\$4.25 FSG



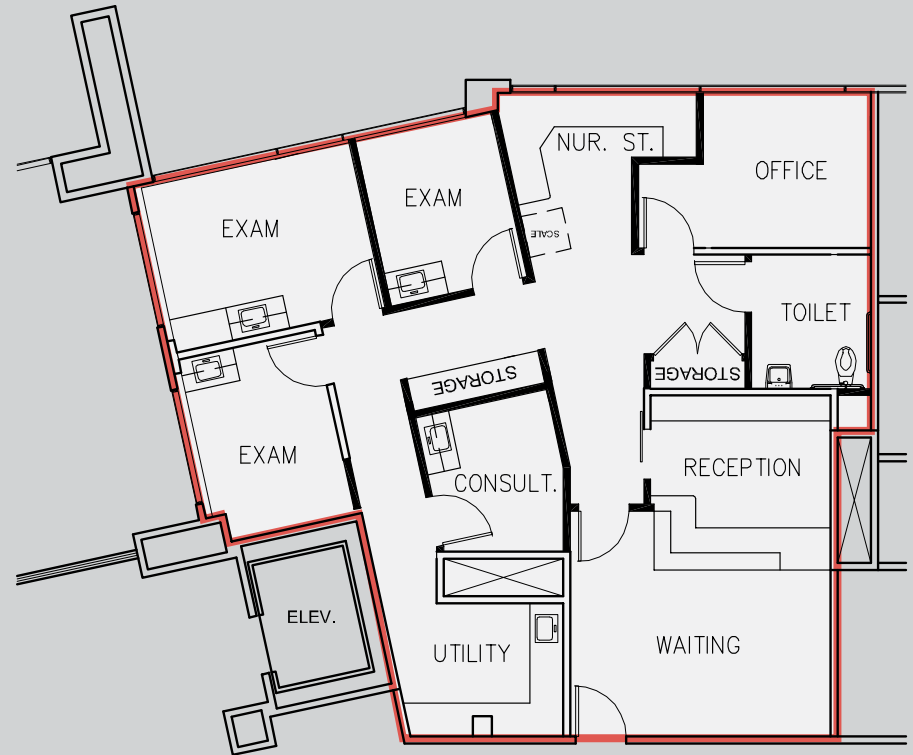
Barranca Medical Plaza

62 Corporate Park, Irvine, CA 92606

FLOOR PLANS



Hypothetical Dental Floor Plan



Hypothetical Medical Floor Plan

Barranca Medical Plaza

62 Corporate Park, Irvine, CA 92606

FLOOR PLAN

2nd Floor

AVAILABLE SUITE:

Suite 220 - 1,955 RSF

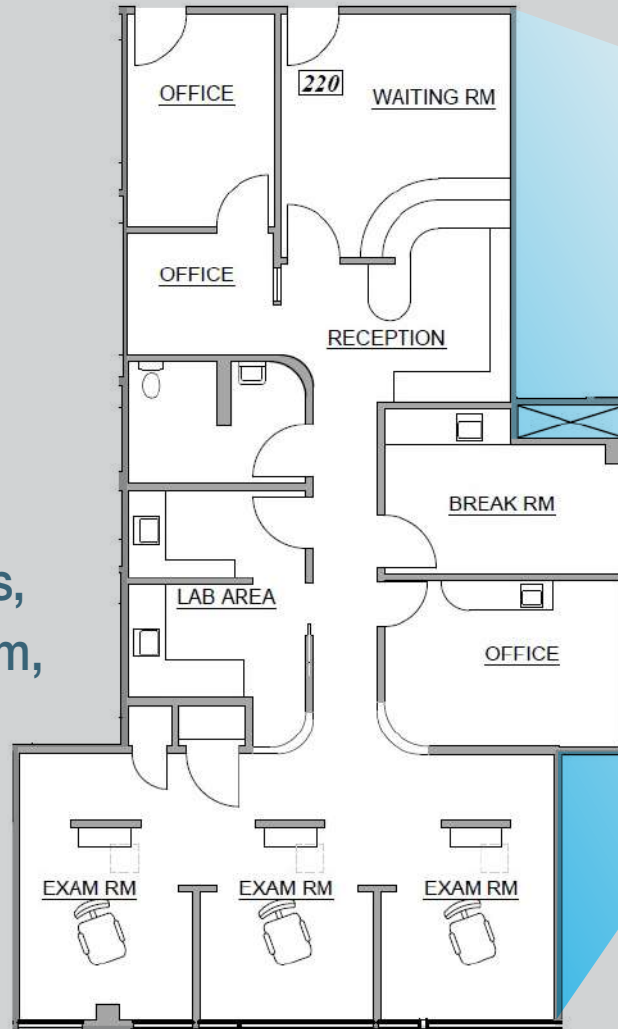
SUITE DESCRIPTION:

DENTAL SUITE

3 Open Bay Dental Chairs, 3 Offices, Lab Area, Work Station, Break Room, In-suite Restroom, Waiting Area, Reception/Admin

LEASE RATE:

\$4.25 FSG



Barranca Medical Plaza

62 Corporate Park, Irvine, CA 92606

FLOOR PLAN

2nd Floor

AVAILABLE SUITE:

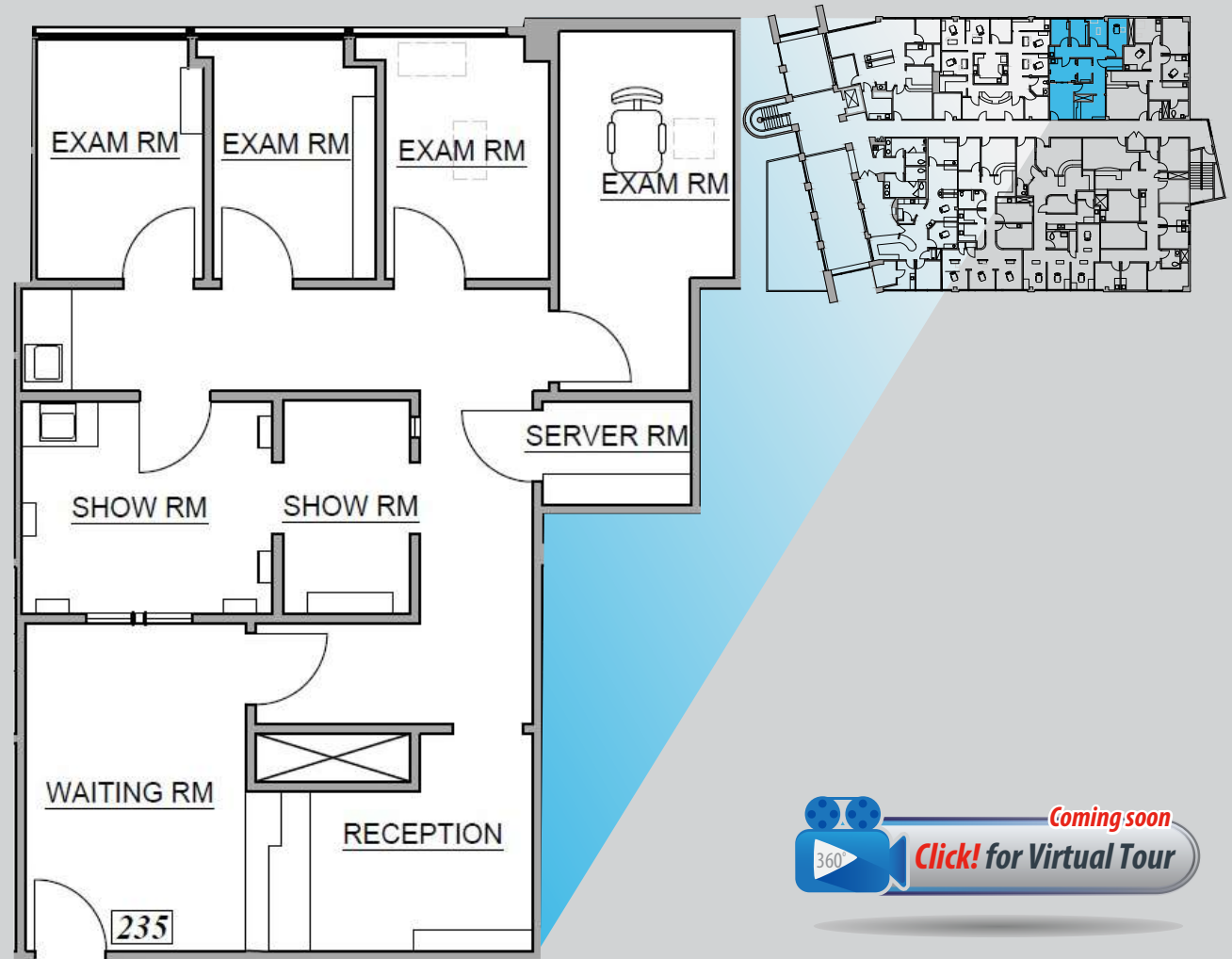
Suite 235 - 1,229 RSF

SUITE DESCRIPTION:

4 Exam Rooms, X-Ray Room,
Work Station, Reception/Admin

LEASE RATE:

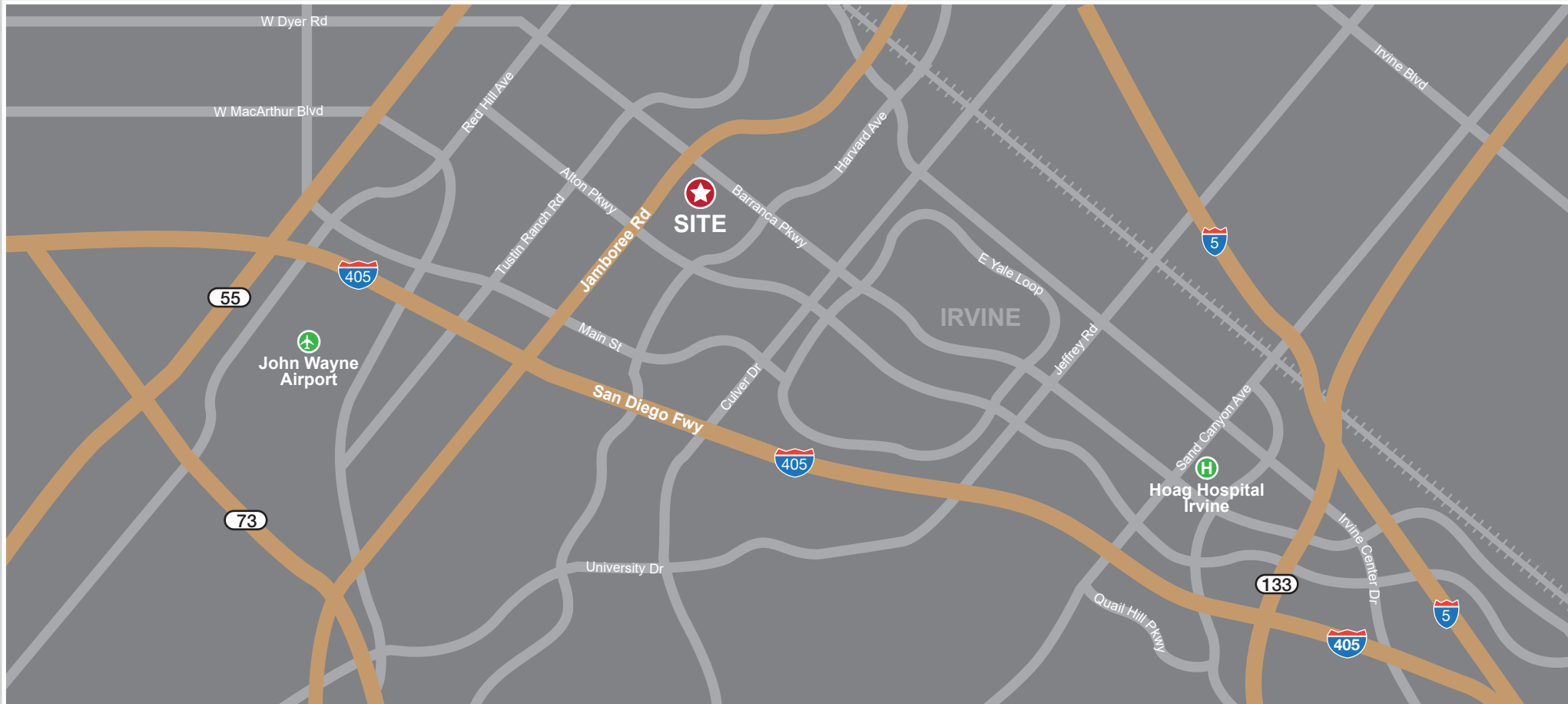
\$4.25 FSG



Barranca Medical Plaza

62 Corporate Park, Irvine, CA 92606

VICINITY MAP:



Leasing Manager
Bryan McKenney
(949) 478 - 0087 | LIC#01505792
Bryan@MedWestRealty.com

Leasing Manager
Casey P. Immel
(949) 278 - 5376 | LIC#01312850
Casey@MedWestRealty.com

Now Leasing