

UNDER NEW OWNERSHIP



## 774 to 4,068 RSF Historic Office Space Available Lease Rate: \$22.00 - \$25.00/RSF

### Property Highlights

Located in the heart of downtown, the Concord Building provides historic charm coupled with the following amenities:

- Award winning Mother's Bistro & Bar located on-site
- Easy access to I-5, I-405 and I-84
- Public transportation in close proximity
- Oldest continuously occupied building in Portland

### Building Features

- Full floor vacancy available
- Cool/creative space
- High ceilings
- Generous glass line
- Common area renovations underway

### Area Amenities

- Approx. 30 food carts less than a block away
- Nearby boutique hotel coming soon

### Havilah Etter

Client Coordinator  
+1 503 279 2768  
havilah.etter@cushwake.com

### Dan Swift, CCIM, SIOR

Senior Director  
+1 503 279 1765  
dan.swift@cushwake.com

### Lana Baldock, CCIM

Senior Director  
+1 503 279 1775  
lana.baldock@cushwake.com

200 SW Market Street  
Portland, OR 97201  
main +1 503 279 1700  
[cushmanwakefield.com](http://cushmanwakefield.com)

## Space Available

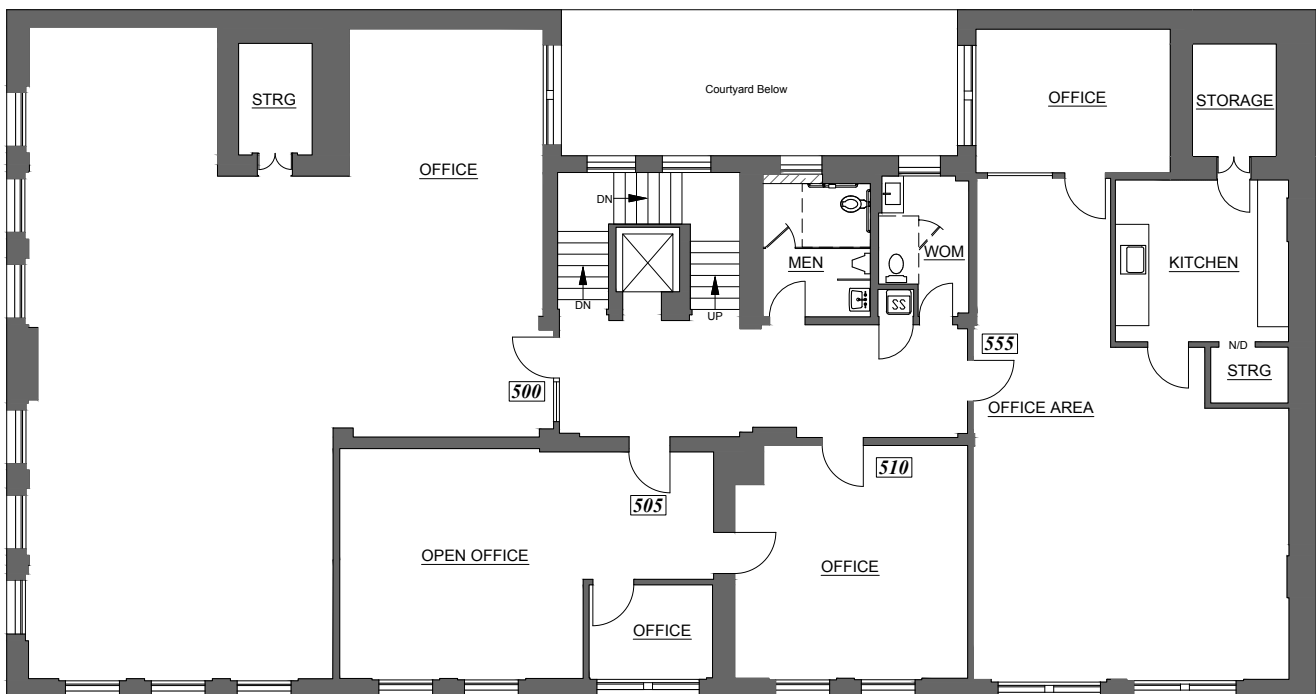
Suite 600/605/607	3,422 RSF*	\$25.00/RSF
Suite 500	4,068 RSF	\$25.00/RSF
Suite 308	774 RSF	\$22.00/RSF
Suite 300	2,398 RSF	\$24.00/RSF
Suite 204/205	532 RSF**	\$24.00/RSF

\*Divisible to 1,436 RSF

\*\*Divisible to 263 RSF



## Full Floor Vacancy - Fifth Floor


**Havilah Etter**

Client Coordinator  
+1 503 279 2768  
havilah.etter@cushwake.com

**Dan Swift, CCIM, SIOR**

Senior Director  
+1 503 279 1765  
dan.swift@cushwake.com

**Lana Baldock, CCIM**

Senior Director  
+1 503 279 1775  
lana.baldock@cushwake.com

200 SW Market, Suite 200  
Portland, OR  
main +1 503 279 1700  
fax +1 503 279 1790  
**cushmanwakefield.com**