



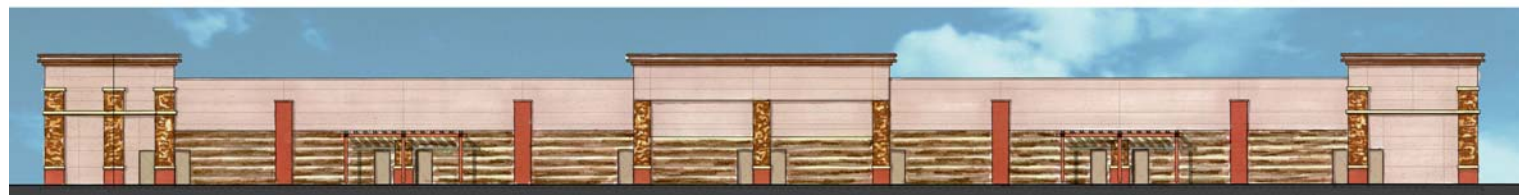
1 WEST ELEVATION



2 SOUTH ELEVATION



3 NORTH ELEVATION



4 EAST ELEVATION

MATERIAL SYNOPSIS

MATERIAL COVERAGE ON ENTIRE BUILDING:
 GLASS: 26% OF TOTAL FACADE AREA
 BRICK / CAST STONE / CULTURED STONE: 24% OF TOTAL FACADE AREA
 ROUGH HEWN CMU: 38% OF TOTAL FACADE AREA
 STUCCO: 38% OF TOTAL FACADE AREA
 SPECIFIC BUILDING MATERIALS:
 GLASS: CLEAR GLASS IN CLEAR ANODIZED ALUMINUM STOREFRONT SYSTEM
 BRICK: SOUX CITY BRICK 'EBONITE' OR APPROVED EQUAL
 APPLIED STONE: CULTURED STONE 'SHALE CONTRY LEDGESTONE' (CSV-20044) DRYSTACK OR APPROVED EQUAL
 CAST STONE: CONTINENTAL CAST STONE #1102 OR APPROVED EQUAL
 ROUGH HEWN CMU: OLDCASTLE CARMEL & KANSAS WHITE OR APPROVED EQUAL
 STUCCO: STO INDIANA LIMESTONE 10622 FOR MAIN BLDG. & MOCHA CREAM 1015 FOR CORNICE IN MEDIUM FINISH OR APPROVED EQUAL
 PERGOLA: STAINED CEDAR & BLACK SIMPSON TIE HARDWARE OR APPROVED EQUAL
 CANOPY: BLACK CANVAS W/ RETURNS TO BLDG.



1 LANDSCAPE PLAN

