

6165 & 6256 Greenwich Drive

GOVERNOR  
EXECUTIVE CENTRE | & ||

You are Here. Amazing companies **and people** at Governor Executive Center.



# 6165 & 6256 Greenwich Drive



## The Project

A 152,482 r.s.f. two building Class A office campus ideally located in Governor Park

Energy Star® rated buildings

Efficient, flexible floorplan layouts

Freeway close with minimized commute times when compared to neighboring UTC and Sorrento Mesa submarkets

Convenience and accessibility without the hassle

Highly visible — On average 196,000 cars travel past daily on Interstate 805

## 6165 Greenwich Drive

Men's and women's shower facilities

Free parking with a 4/1,000 u.s.f. ratio

## 6256 Greenwich Drive

Covered parking in three-level parking structure with a 4/1,000 u.s.f. ratio

Electric vehicle charging station

Men's and women's shower facilities

## Availability

---

### Governor Executive Centre I **6165 Greenwich Drive**

Suite	RSF	Rent	Description
100	1,362	\$2.85 + E	Retail location — cafe
<b>18,054 RSF comprised of entire 2nd floor!</b>			
200*	7,974	\$3.10 + E	Full floor opportunity. Potential for building top signage.
220*	2,310	\$3.10 + E	Full floor opportunity. Potential for building top signage. Available 12/1/18.
240*	7,770	\$3.10 + E	Full floor opportunity. Potential for building top signage.

### Governor Executive Centre II **6256 Greenwich Drive**

Suite	RSF	Rent	Description
425	2,878	\$3.05 FSG	SPEC SUITE Glass double door entry off elevator, conference room, large open area, break area on window line with expansive views
<b>9,435 RSF available on the 5th floor!</b>			
510**	2,087	\$3.05 FSG	SPEC SUITE Glass double door entry off elevator, lobby, 2 offices, large conference room, reception and large open area, galley kitchen and IT closet.
515**	4,044	\$3.05 FSG	Available 1/1/19.
550**	3,304	\$3.05 FSG	Reception, conference room, break room, 7 private offices, storage, IT room and open area.

\*Suites 200, 220 & 240 are contiguous for up to 18,054 RSF

\*\* Suites 510, 515 & 550 are contiguous for up to 9,435 RSF.



# GOVERNOR EXECUTIVE CENTRE

\*Suites 200, 220 & 240 are contiguous for up to 18,054 SF  
Freeway visible signage available

**6165 Greenwich Drive**

Suite 200 | 7,974 SF

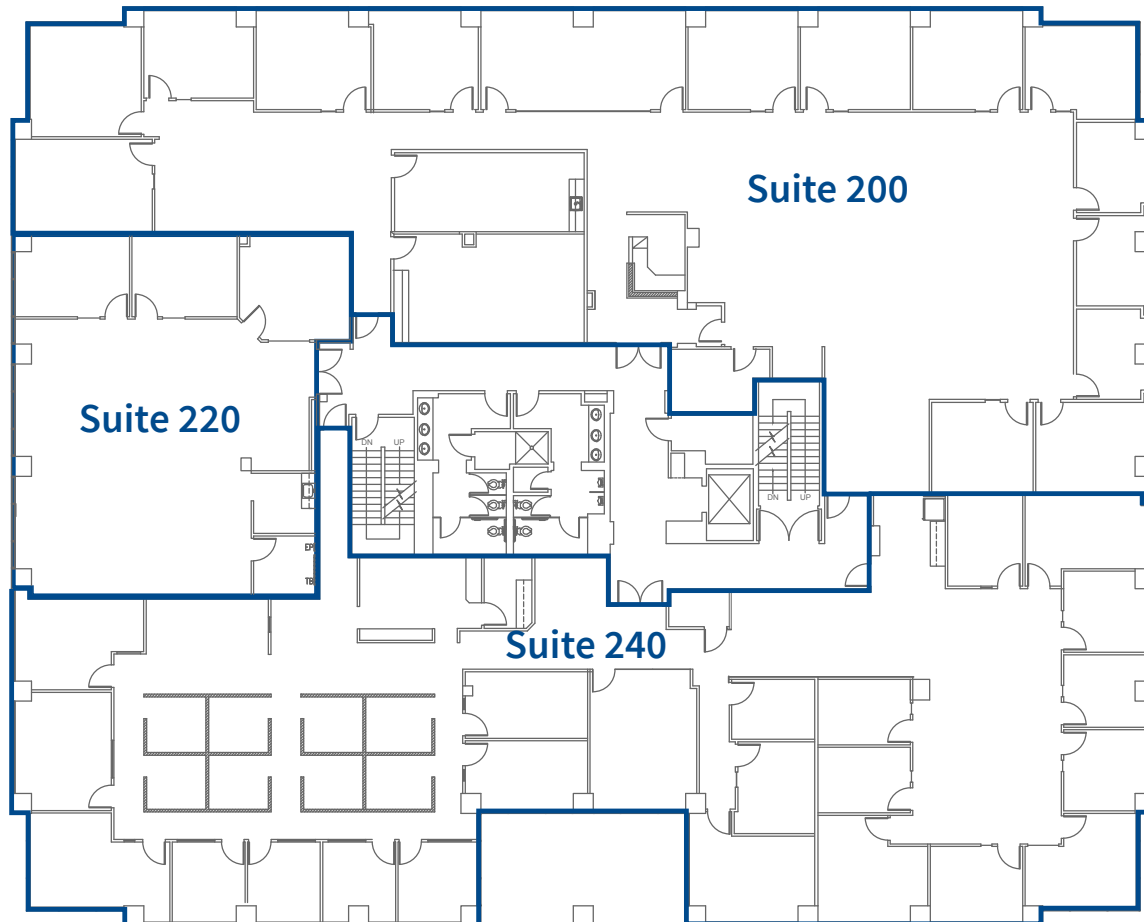
Vacant

Suite 220 | 2,310 SF

Available 11/1/18

Suite 240 | 7,770 SF

Vacant

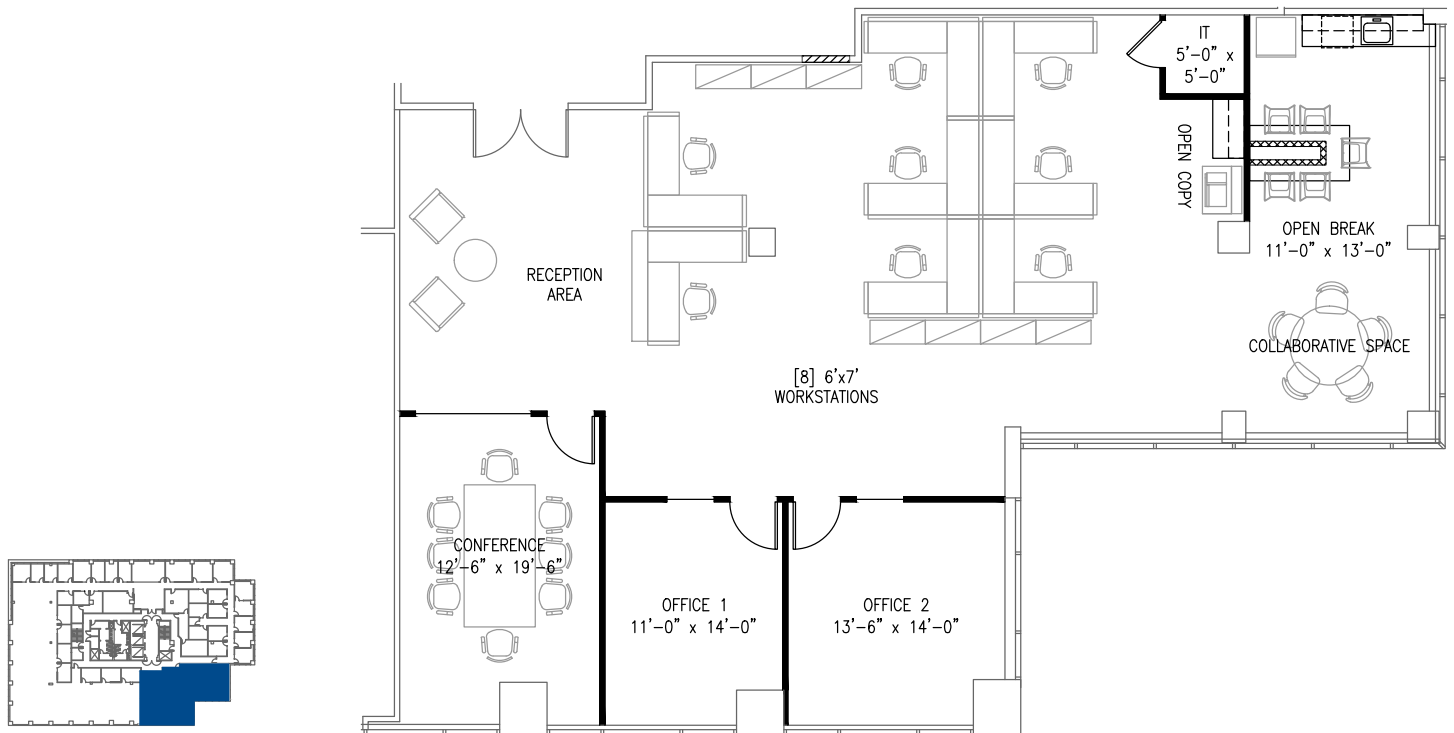


Bess Wakeman  
858.410.1245  
bess.wakeman@am.jll.com  
Lic. No. 01177659

Richard Gonor  
858.410.1243  
richard.gonor@am.jll.com  
Lic. No. 01142178

GOVERNOR  
EXECUTIVE CENTRE

6256 Greenwich Drive  
Suite 425 | 2,878 SF



Bess Wakeman  
858.410.1245  
bess.wakeman@am.jll.com  
Lic. No. 01177659

Richard Gonor  
858.410.1243  
richard.gonor@am.jll.com  
Lic. No. 01142178

# GOVERNOR EXECUTIVE CENTRE

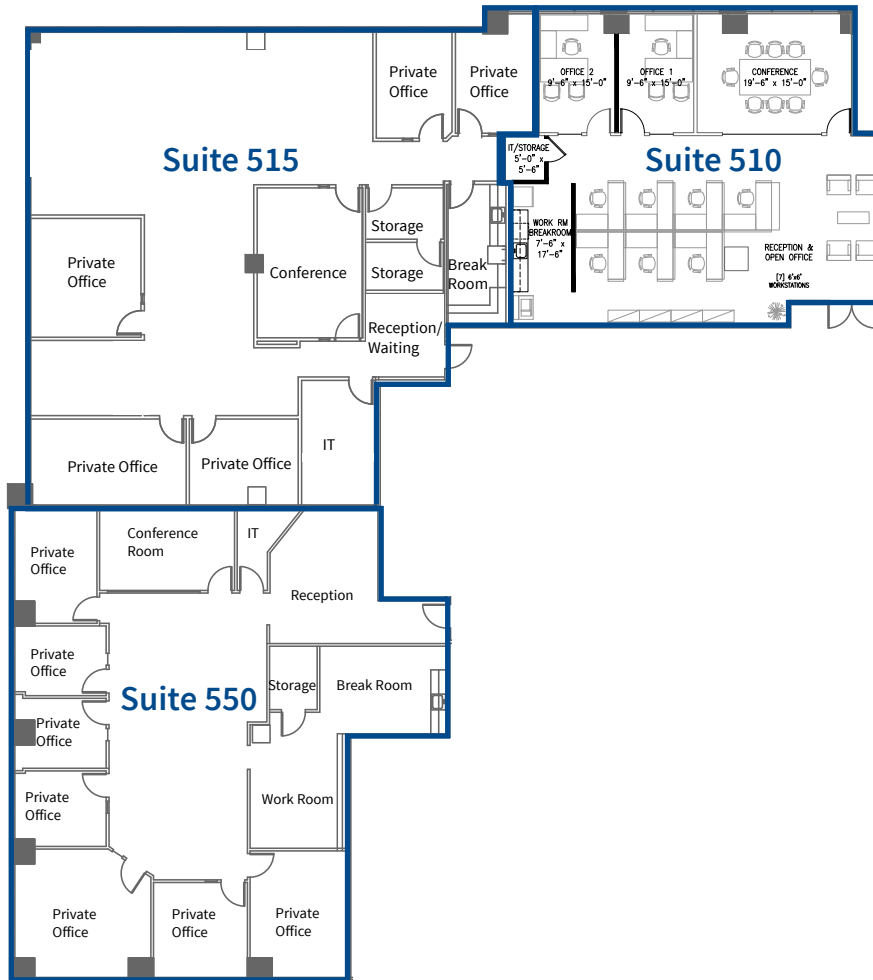
## 6256 Greenwich Drive

Suite 510 | 2,087 SF  
Vacant

Suite 515 | 4,044 SF  
Available 1/1/19

Suite 550 | 3,304 SF  
Vacant

\*Suites 510, 515 & 550 are contiguous for up to 9,435 SF



Bess Wakeman  
858.410.1245  
bess.wakeman@am.jll.com  
Lic. No. 01177659

Richard Gonor  
858.410.1243  
richard.gonor@am.jll.com  
Lic. No. 01142178

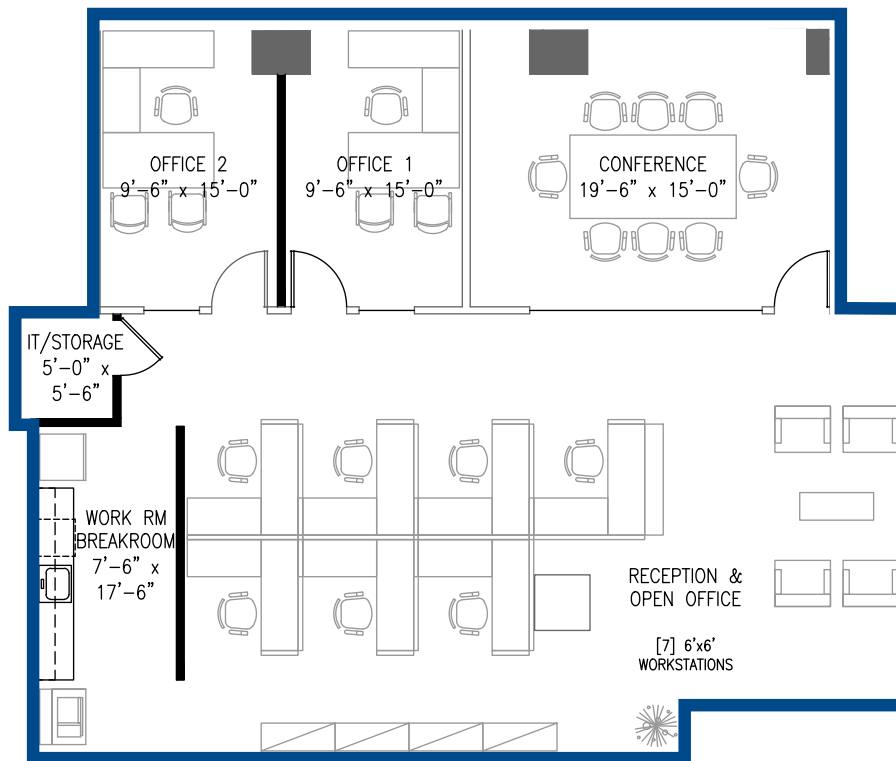
# GOVERNOR EXECUTIVE CENTRE

6256 Greenwich Drive

Suite 510 | 2,087 SF

Vacant

\*Suites 510, 515 & 550 are contiguous for up to 9,435 SF



Bess Wakeman  
858.410.1245  
bess.wakeman@am.jll.com  
Lic. No. 01177659

Richard Gonor  
858.410.1243  
richard.gonor@am.jll.com  
Lic. No. 01142178



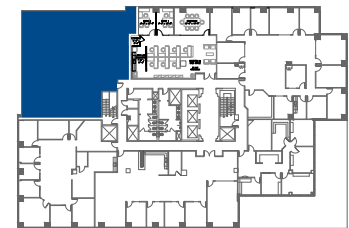
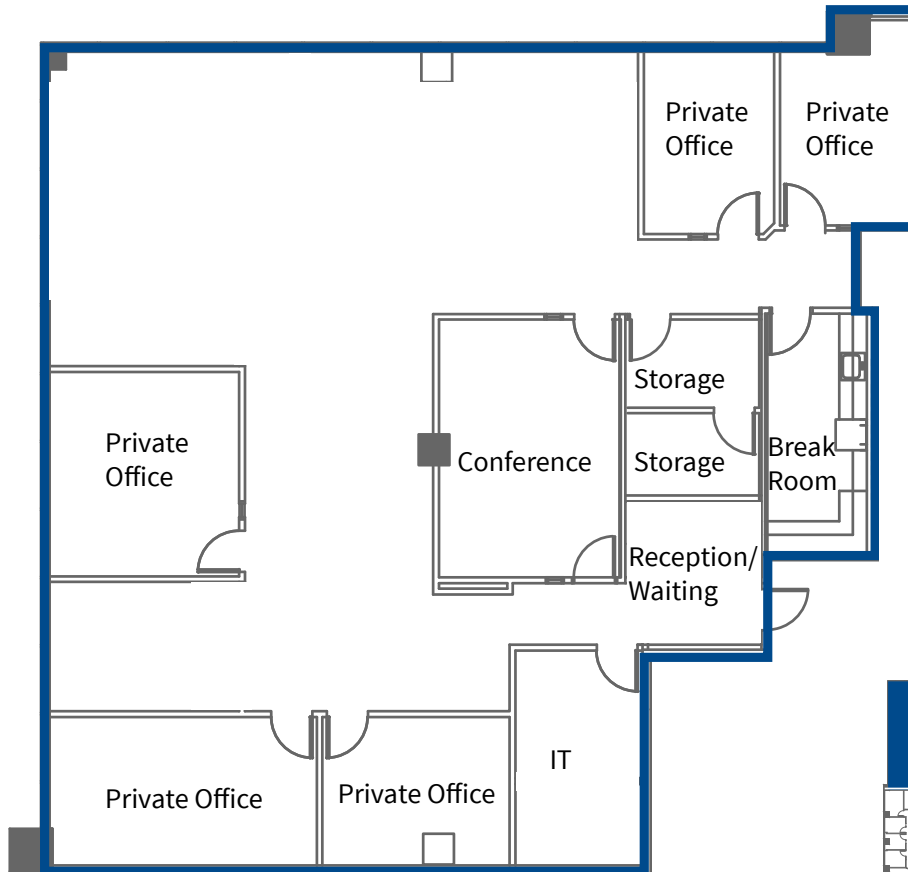
# GOVERNOR EXECUTIVE CENTRE

6256 Greenwich Drive

Suite 515 | 4,044 SF

Available 1/1/19

\*Suites 510, 515 & 550 are contiguous for up to 9,435 SF



Bess Wakeman  
858.410.1245  
bess.wakeman@am.jll.com  
Lic. No. 01177659

Richard Gonor  
858.410.1243  
richard.gonor@am.jll.com  
Lic. No. 01142178

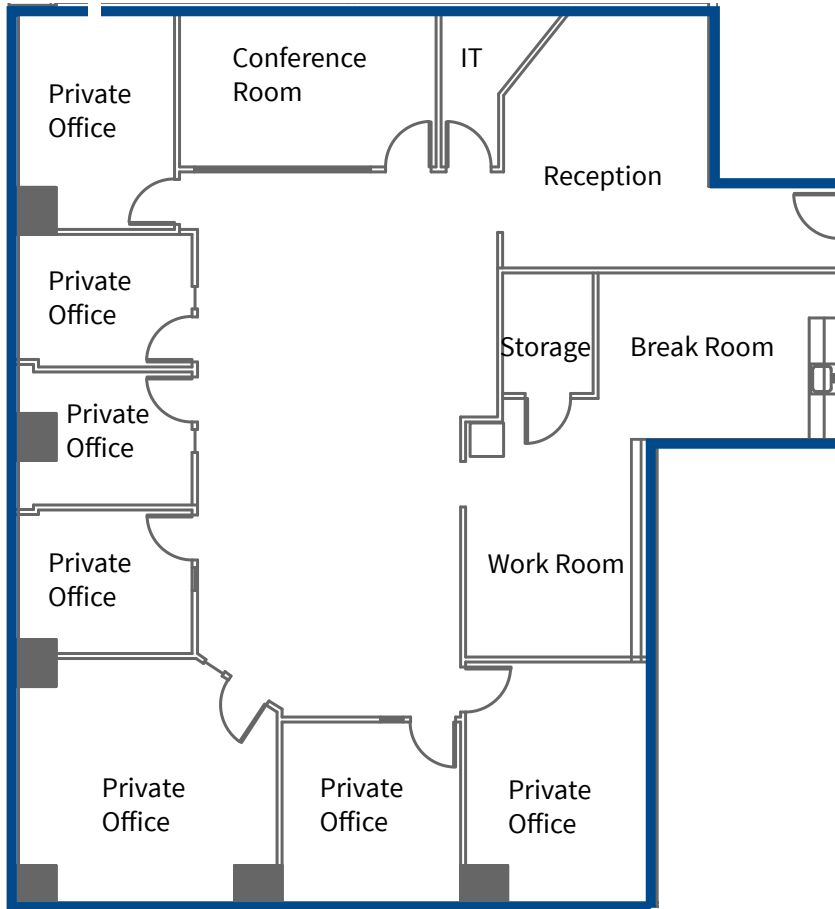
# GOVERNOR EXECUTIVE CENTRE

6256 Greenwich Drive

Suite 550 | 3,304 SF

Vacant

\*Suites 510, 515 & 550 are contiguous for up to 9,435 SF



Bess Wakeman  
858.410.1245  
bess.wakeman@am.jll.com  
Lic. No. 01177659

Richard Gonor  
858.410.1243  
richard.gonor@am.jll.com  
Lic. No. 01142178

Visibility. Convenience. Accessibility.  
It's all Here.

UTC

GOVERNOR  
PARK PLAZA

Governor Drive

6333

6363

Greenwich Drive

6256

6165

GOVERNOR & II  
EXECUTIVE CENTRE

805



---

GOVERNOR | & |  
EXECUTIVE CENTRE

---



Bess Wakeman  
858.410.1245  
bess.wakeman@am.jll.com  
Lic. No. 01177659

Richard Gonor  
858.410.1243  
richard.gonor@am.jll.com  
Lic. No. 01142178