

FOR LEASE

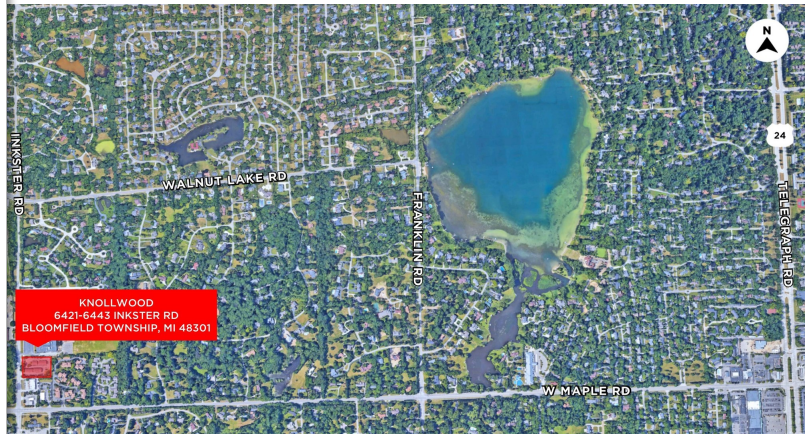
KNOLLWOOD
6421-6443 INKSTER ROAD
BLOOMFIELD TOWNSHIP, MI 48301



RENTAL RATES STARTING AT \$10.00 PSF

PROPERTY FEATURES:

- Suites available from 747 SF to 4,000 SF
- Medical/Office suites available
- Convenient parking at suite entrance
- Competitively priced
- Immediate occupancy
- Rental rates ranging from \$12.00 to \$16.00 per square foot gross plus utilities



FOR MORE INFORMATION PLEASE CONTACT:

TODD HAWLEY
todd.hawley@freg.com

RICK KAPLAN
rick.kaplan@freg.com

248.324.2000

eCODE 494

The information provided herein along with any attachment(s) was obtained from sources believed to be reliable, however, Friedman Real Estate makes no guarantees, warranties, or representations as to the completeness or accuracy of such information and legal counsel is advised. All information provided is subject to verification and no liability for reliance on such information or errors or omissions is assumed. The presentation of this property is submitted subject to errors, omissions, change of price or conditions, prior sale or lease, or withdrawal without notice. Copyright © 2019 Friedman Real Estate. All rights reserved.

FOR LEASE

KNOLLWOOD
6421-6443 INKSTER ROAD
BLOOMFIELD TOWNSHIP, MI 48301



1894
KNOLLWOOD
- COUNTRY CLUB -

INKSTER RD.

AVAILABLE SUITES

SPACE	SPACE USE	LEASE RATE	LEASE TYPE	SIZE (SF)	TERM
SUITE 6431- 120 + 126	Office	\$14.00 SF/yr	Gross + Utilities & Janitorial	2,635 SF	Negotiable
SUITE 6441- 130 + 140 + 150 + 160	Office	\$14.00 SF/yr	Gross + Utilities & Janitorial	4,000 SF (Can be Split)	Negotiable
SUITE 6431-226	Office Building	\$14.00 SF/yr	Gross + Utilities & Janitorial	1,117 SF	Negotiable
SUITE 6443-170D	Office	\$14.00 SF/yr	Gross + Utilities & Janitorial	747 SF	Negotiable
SUITE 6441-230	Office Building	\$14.00 SF/yr	Gross + Utilities & Janitorial	788 SF	Negotiable

FOR MORE INFORMATION PLEASE CONTACT:

TODD HAWLEY todd.hawley@freg.com

RICK KAPLAN rick.kaplan@freg.com

248.324.2000

eCODE 494