

TRAIL POINTE PLAZA | 11921-11927 West 119th, Overland Park, KS 66213



- + Join Jimmy John's just west of Quivira on 119th
- + Combined total 2,926 SF available
 - Inline space – 1,473 SF
 - End cap space – 1,453 SF
- + Excellent visibility on 119th Street with 23,800 CPD

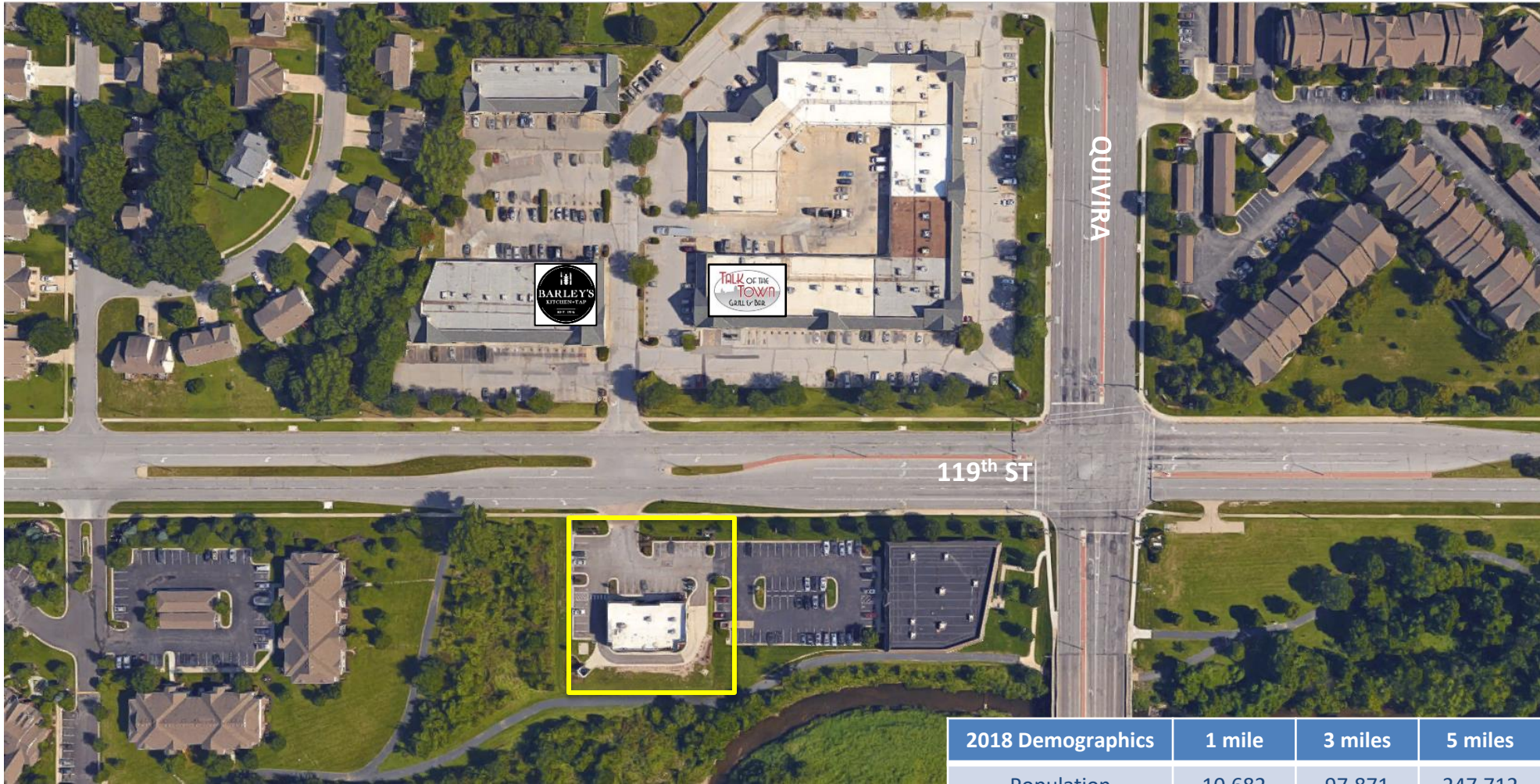
Jill S. Bergthold, CCIM

jbergthold@fishmancommercial.com

913.747.3322 O | 913.961.0600 C



TRAIL POINTE PLAZA | SW of 119th & Quivira, Overland Park, KS 66213

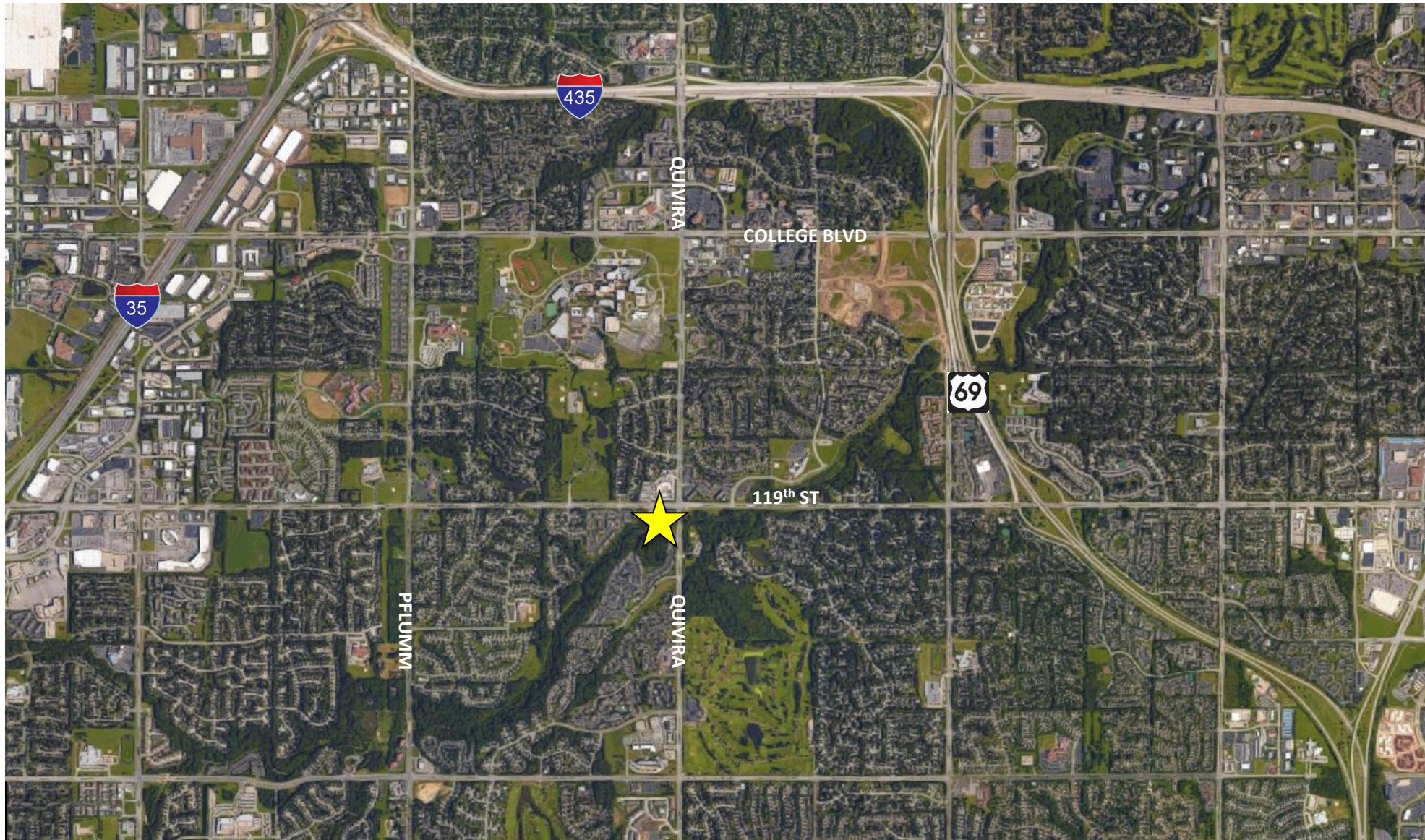


| 2018 Demographics | 1 mile | 3 miles | 5 miles |
|-------------------|-----------|-----------|-----------|
| Population | 10,682 | 97,871 | 247,712 |
| Households | 4,635 | 39,593 | 99,162 |
| Average HH Income | \$115,307 | \$111,636 | \$108,309 |

Jill S. Bergthold, CCIM
 jbergthold@fishmancommercial.com
 913.747.3322 O | 913.961.0600 C



TRAIL POINTE PLAZA | SW of 119th & Quivira, Overland Park, KS 66213



Jill S. Bergthold, CCIM
jbergthold@fishmancommercial.com
913.747.3322 O | 913.961.0600 C

