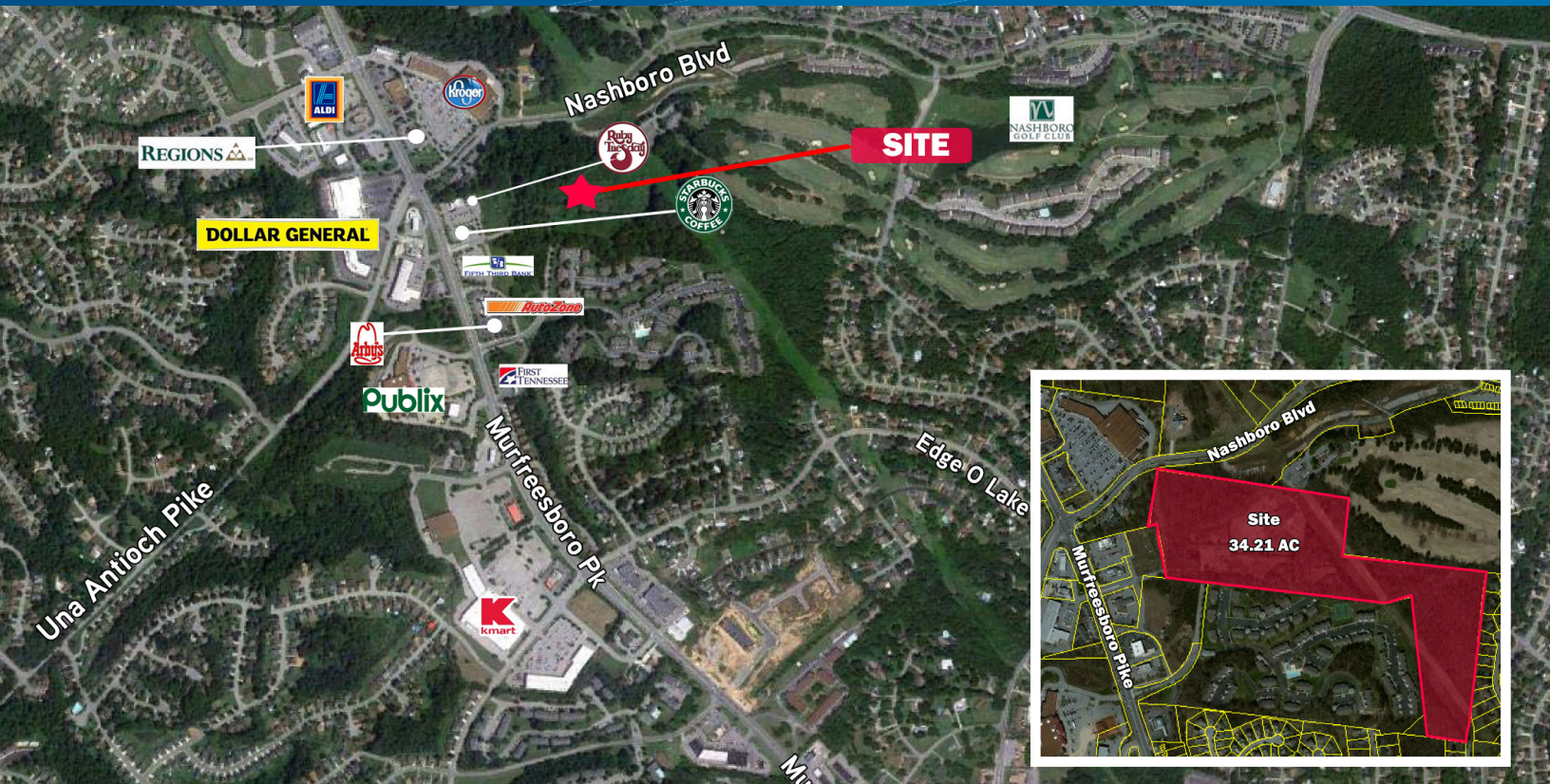


FOR SALE > COMMERCIAL OR RESIDENTIAL LAND



# Nashboro Village Area

2330 MURFREESBORO PIKE, NASHVILLE, TN 37217



## Site Features

- > 34.21 AC
- > 14 AC commercial PUD
- > 19 AC residential
- > Adjacent to Nashboro Golf Course
- > This property is located in the high density Nashboro Village submarket
- > Potential for multi-family rezoning for townhomes or retirement community
- > Access is between Starbucks and Fifth Third Bank and/or Brooksboro Place
- > Traffic Count: 37,880 VPD

**Sale Price: \$2,800,000**

The information contained herein has been given to us by the owner of the property or other sources we deem reliable. We have no reason to doubt its accuracy, but we do not guarantee it. All information should be verified prior to purchase or lease.

AGENT: TONY VAUGHN  
DIR: 615 850 2731  
NASHVILLE, TN  
tony.vaughn@colliers.com

COLLIERS INTERNATIONAL  
615 3rd Avenue South, Suite 500  
Nashville, TN 37210  
615 850 2700  
www.colliers.com