



1 Acre Site Sale Price: Negotiable

Commercial lot adjacent to existing CVS Pharmacy located on the southwest corner of 13th and Norfolk Avenue. Multiple access points. Great location for small office user or retail site.

Justin Riviera
Associate
(402) 548 4064
jriviera@lundco.com

450 Regency Parkway, Suite 200
Omaha, NE 68114
+1 402 393 8811
lundco.com

Independently Owned and Operated / A Member of the Cushman & Wakefield Alliance

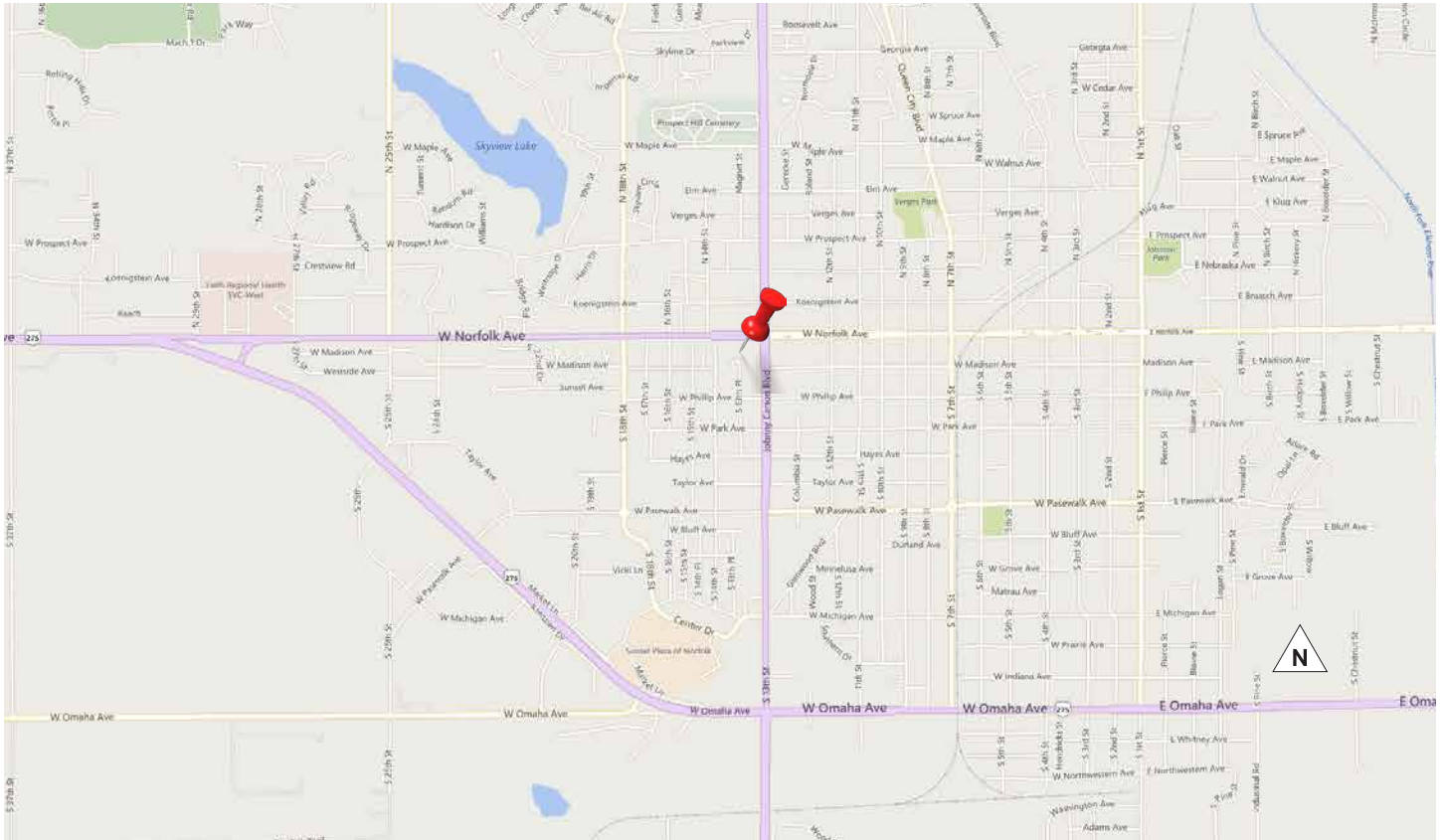
Cushman & Wakefield Copyright 2015. No warranty or representation, express or implied, is made to the accuracy or completeness of the information contained herein, and same is submitted subject to errors, omissions, change of price, rental or other conditions, withdrawal without notice, and to any special listing conditions imposed by the property owner(s). As applicable, we make no representation as to the condition of the property (or properties) in question.



FOR SALE

CVS Land Norfolk

1301 W. Norfolk Ave. / Norfolk, NE



Property Highlights

Sale Price	Negotiable
Gross Acres	Approximately 1 Acre
Zoning	Commercial
Lot Dimensions	Irregular
Improvements	None
Utilities	In Street
Flood Plain	No
Traffic Counts	17,740 EADT

Independently Owned and Operated / A Member of the Cushman & Wakefield Alliance

Cushman & Wakefield Copyright 2015. No warranty or representation, express or implied, is made to the accuracy or completeness of the information contained herein, and same is submitted subject to errors, omissions, change of price, rental or other conditions, withdrawal without notice, and to any special listing conditions imposed by the property owner(s). As applicable, we make no representation as to the condition of the property (or properties) in question.

