



3514

*North Power
Road*

**1,151 s.f. available for sublease
Term thru January 31, 2019**

Mesa, Arizona



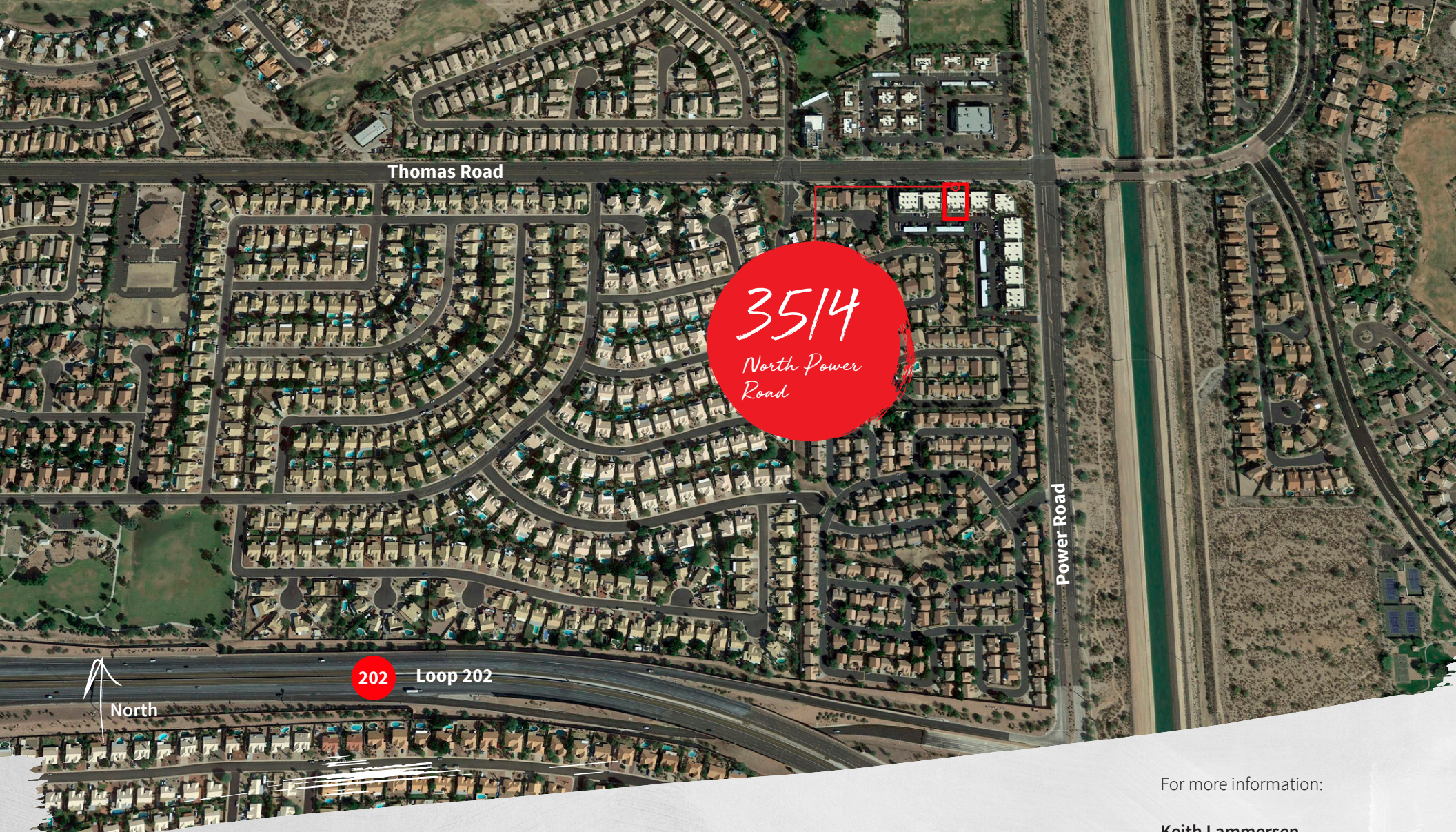


Red Mountain Village - Building 4 3514 North Power Road, Mesa, AZ

- Office condominium
- Suite 126
- 1,151 square feet available
- 4.3/1,000 parking
- Available immediately
- Term thru January 31, 2019
- Close proximity to Loop 202

Floor plan







3514
North Power
Road

For more information:

Keith Lammersen
+1 602 282 8276
keith.lammersen@am.jll.com

Jason Moore
+1 602 282 6280
jason.moore@am.jll.com

jll.com/phoenix  [@jllphoenix](https://twitter.com/jllphoenix)
602 282 6300  phoenixblog.jll.com

©2017 Jones Lang LaSalle IP, Inc. All rights reserved. All information contained herein is from sources deemed reliable; however, no representation or warranty is made to the accuracy thereof.

