

RIVERCHASE ESTATES

86 PERMITTED LOTS | LANCASTER COUNTY, SC



Forde Britt | fbritt@landadvisors.com

809 W. Hill Street, Charlotte, NC 28208 ph. 704.594.7310 | www.landadvisors.com

The information contained herein is from sources deemed reliable. We have no reason to doubt its accuracy but do not guarantee it. It is the responsibility of the person reviewing this information to independently verify it. This package is subject to change, prior sale or complete withdrawal. SCLancaster197920 - 10.15.18



PROPERTY OVERVIEW

LOCATION Chaplain Rd & Townsend Rd

PRICE Submit All Offers

LOTS 86

ZONING Residential

COMMENTS Situated just 30 minutes from Charlotte, North Carolina along the shores of the Catawba River, Riverchase Estates is the ideal place to enjoy the area's plentiful activities while living your dream on an estate sized lot in a peaceful, gated, natural setting. Enjoy world class golfing nearby while still being close to fine dining, shopping, museums and a wide range of entertainment possibilities.

PROPERTY HIGHLIGHTS

Eagle Commons: Within this 6-acre lakeside park enjoy a casual game on the basketball and tennis courts and let children's imagination soar at the playground. Take pleasure in the open air at the amphitheater or float across the water at the resort style pool with lap lanes & tanning shelves.

The Clubhouse: The Clubhouse at Eagle Commons is a wonderful venue for meeting neighbors and socializing. Enjoy the spacious conference room to host special events and community meetings. Take advantage of the state-of-the-art fitness center to support your health and enhance your energy.

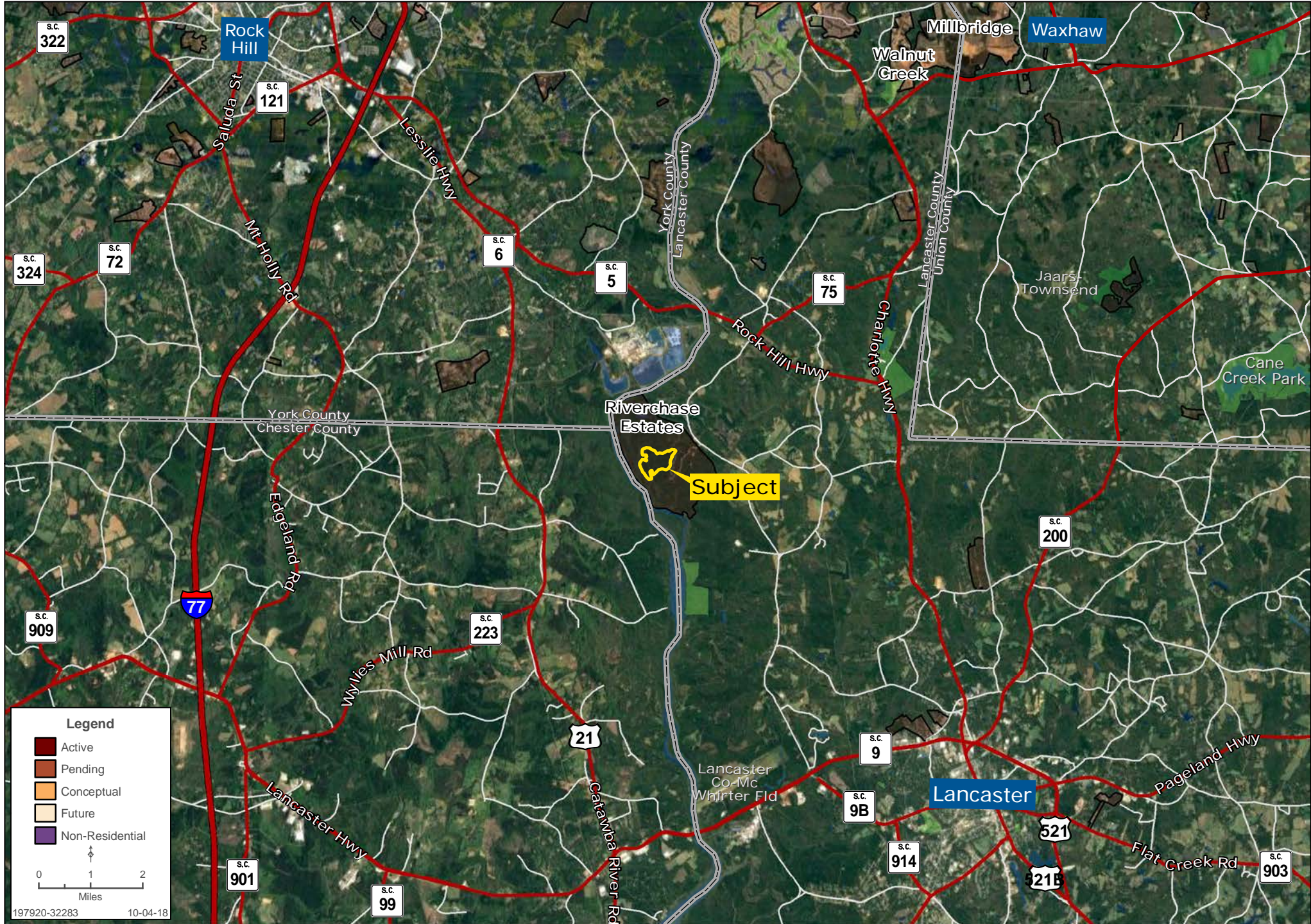
Riverside Landing: Miles of inviting walking and biking trails naturally wind through scenic landscape within the community leading you to Riverside Landing. Enjoy canoeing & kayaking along the Catawba River with exclusive river access at this pristine riverside park.



RIVERCHASE
— ESTATES —

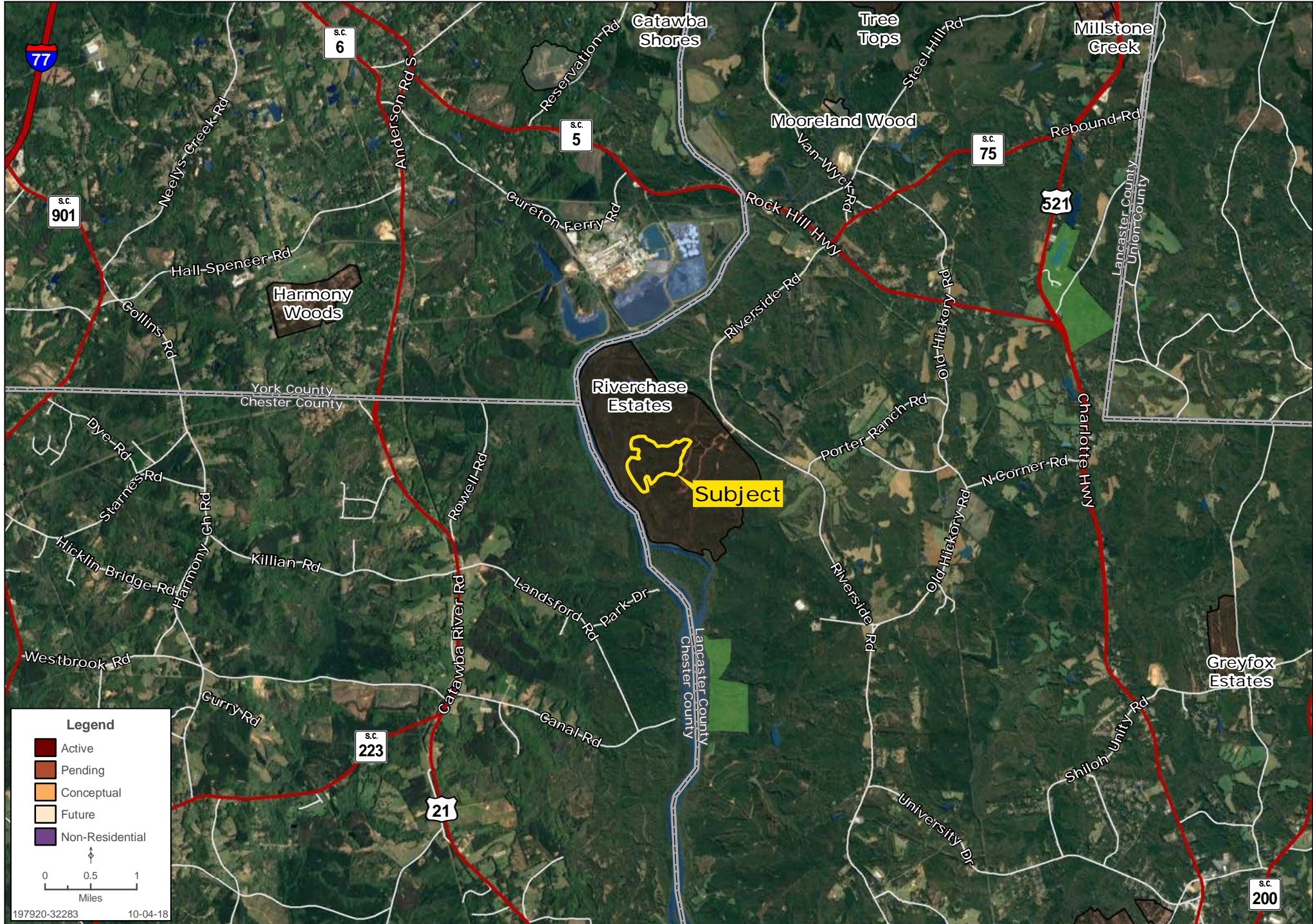
RIVERCHASE PHASE 5 REGIONAL MAP

Forde Britt | 704.351.3338 | www.landadvisors.com



RIVERCHASE PHASE 5 SURROUNDING DEVELOPMENT MAP

Forde Britt | 704.351.3338 | www.landadvisors.com



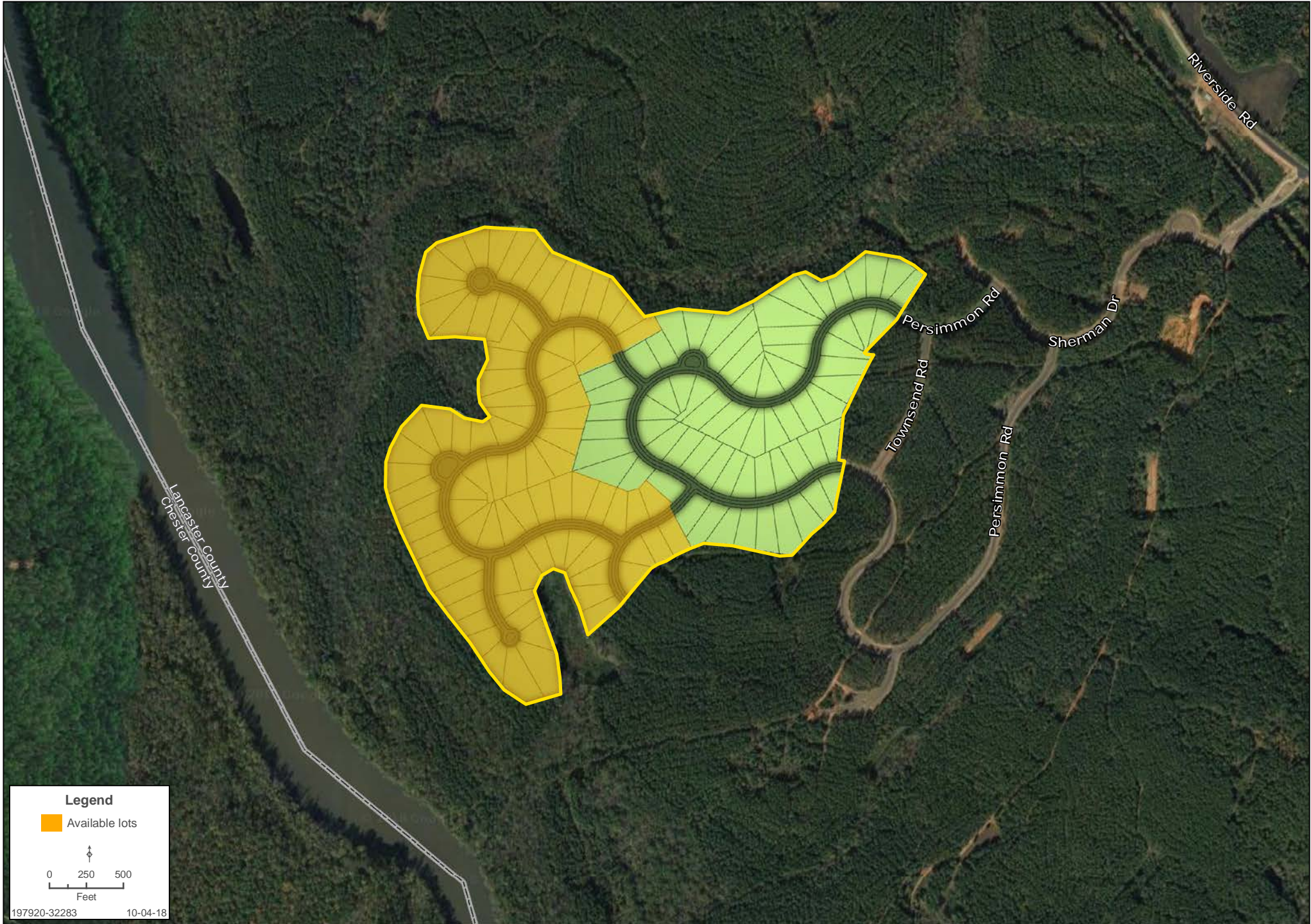
RIVERCHASE PHASE 5 SURROUNDING AREA MAP

Forde Britt | 704.351.3338 | www.landadvisors.com



RIVERCHASE PHASE 5 SITE PLAN MAP

Forde Britt | 704.351.3338 | www.landadvisors.com





IMPORTANT DATES

October 22, 2018: Call for Offers

November 28, 2018: Indicative Offers in the form of an LOI due by 5pm

December 4, 2018: Seller responses given to all offers

(Further steps will follow, if needed)

DUE DILIGENCE

Please [click here](#) to access Due Dilligence Materials.

RIVERCHASE | PROPERTY PHOTOS



RIVERCHASE
-ESTATES

RIVERCHASE
-ESTATES