

# Land Available for Sale - Fully Improved Industrial Lot

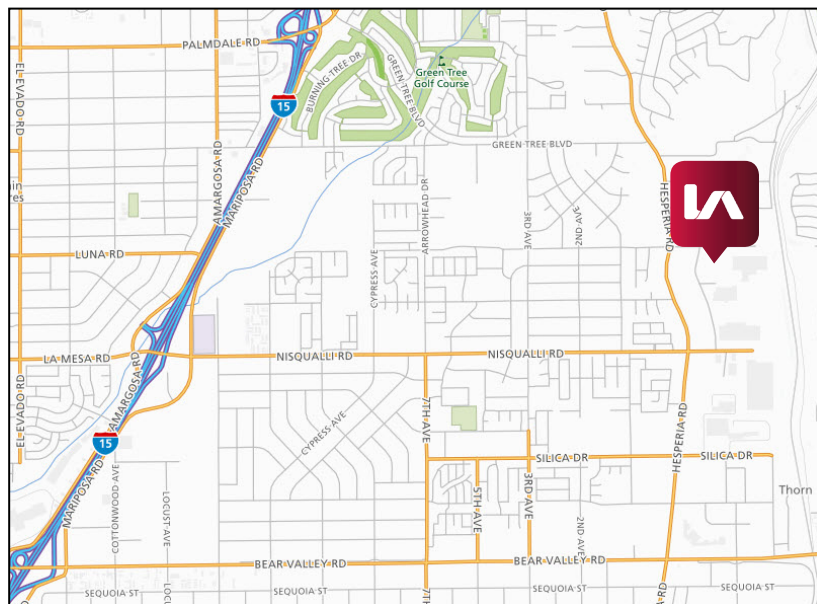
±7.49 Acres



SEC Ottawa Rd., & Enterprise Way, Victorville, CA. 92392

## LAND FEATURES

- ±7.49 Acres of Net Usable Acreage
- APN: 3090-571-08
- Fully Improved with All Utilities
- Located in Foxborough Industrial Park
- Major Users in Immediate Vicinity include: Church & Dwight, Goodyear & ConAgra
- HUGE need for Small Industrial Product in High Desert
- Build Now and they WILL LEASE!
- Improvements alone on this site are worth over \$2/PSF
- Asking: \$1,150,000 (\$3.50 PSF)



FOR MORE INFORMATION PLEASE CONTACT:

**Mike Harrison, Senior Vice President**  
909.373.2944  
mharrison@lee-assoc.com  
DRE #01433329

Lee & Associates® - Ontario

3535 Inland Empire Blvd, Ontario, CA 91764 | 909.989.7771 | lee-assoc.com  
Corp ID 00976995

All information furnished regarding property for sale, rental or financing is from sources deemed reliable, but no warranty or representation is made to the accuracy thereof and same is submitted to errors, omissions, change of price, rental or other conditions prior to sale, lease or financing or withdrawal without notice. No liability of any kind is to be imposed on the broker herein.

# Land Available for Sale - Fully Improved Industrial Lot

±7.49 Acres



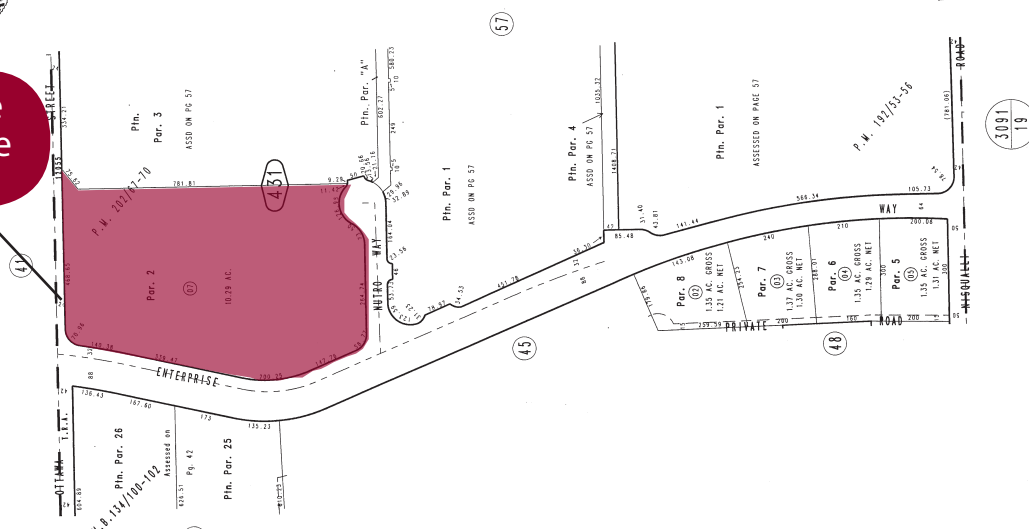
THIS MAP IS FOR THE PURPOSE OF AD VALOREM TAXATION ONLY.

Ptn. E.1/2, S.W.1/4, Sec. 27, T.5N.,R.4W., S.B.M.

City of Victorville 3090 - 43  
Tax Rate Area  
12055



**Subject Site  
±7.49 Usable  
Acres**



DEC 12 2016

FOR MORE INFORMATION PLEASE CONTACT:

**Mike Harrison, Senior Vice President**  
909.373.2944  
mharrison@lee-assoc.com  
DRE #01433329

**Lee & Associates® - Ontario**

3535 Inland Empire Blvd, Ontario, CA 91764 | 909.989.7771 | lee-assoc.com  
Corp ID 00976995

All information furnished regarding property for sale, rental or financing is from sources deemed reliable, but no warranty or representation is made to the accuracy thereof and same is submitted to errors, omissions, change of price, rental or other conditions prior to sale, lease or financing or withdrawal without notice. No liability of any kind is to be imposed on the broker herein.