

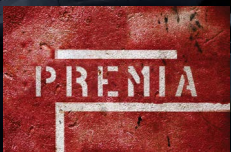


# SHORES CENTER

REDWOOD CITY, CA



100 Marine Parkway



**ROCKPOINT**  
GROUP



**Newmark**  
**Knight Frank**

JOSH ROWELL | 650.358.5261

CRAIG KALINOWSKI | 650.358.5287



1 Twin Dolphin Drive

PROJECT HIGHLIGHTS

HIGHLIGHTS

- Three premier Class A office buildings totaling ±145,000 SF
- Water views along lagoon
- Central peninsula location - 15 minutes from SFO & Downtown Palo Alto
- Walking distance to Redwood Shores Marketplace, Bay Club, & Pullman San Francisco Bay Hotel
- Convenient freeway access to Highway 101

FEATURES

- Shuttle service to San Carlos Caltrain station
- New landscape & lobbies
- On-site gym with showers
- Ample parking
- On-site property management team

RECENT  
PROJECT UPGRADES  
NEW LANDSCAPING AND LOBBIES



**RENOVATED  
LOBBY**  
3 TWIN DOLPHIN



**SPEC SUITE**  
3 TWIN DOLPHIN

**SHORES CENTER**  
REDWOOD CITY, CA



## 100 MARINE PARKWAY

### THIRD FLOOR

- Suite 350: ±3,207 SF

## 1 TWIN DOLPHIN DRIVE

### FIRST FLOOR

- ±7,008 SF

*Available 11/01/2019*

## 3 TWIN DOLPHIN DRIVE

### FIRST FLOOR

- Suite 160: ±6,100 SF

### SECOND FLOOR

- Suite 260: ±1,847 SF
- Suite 295: ±2,404 SF

### THIRD FLOOR

- Suite 325: ±1,736 SF
- Suite 350: ±4,066 SF



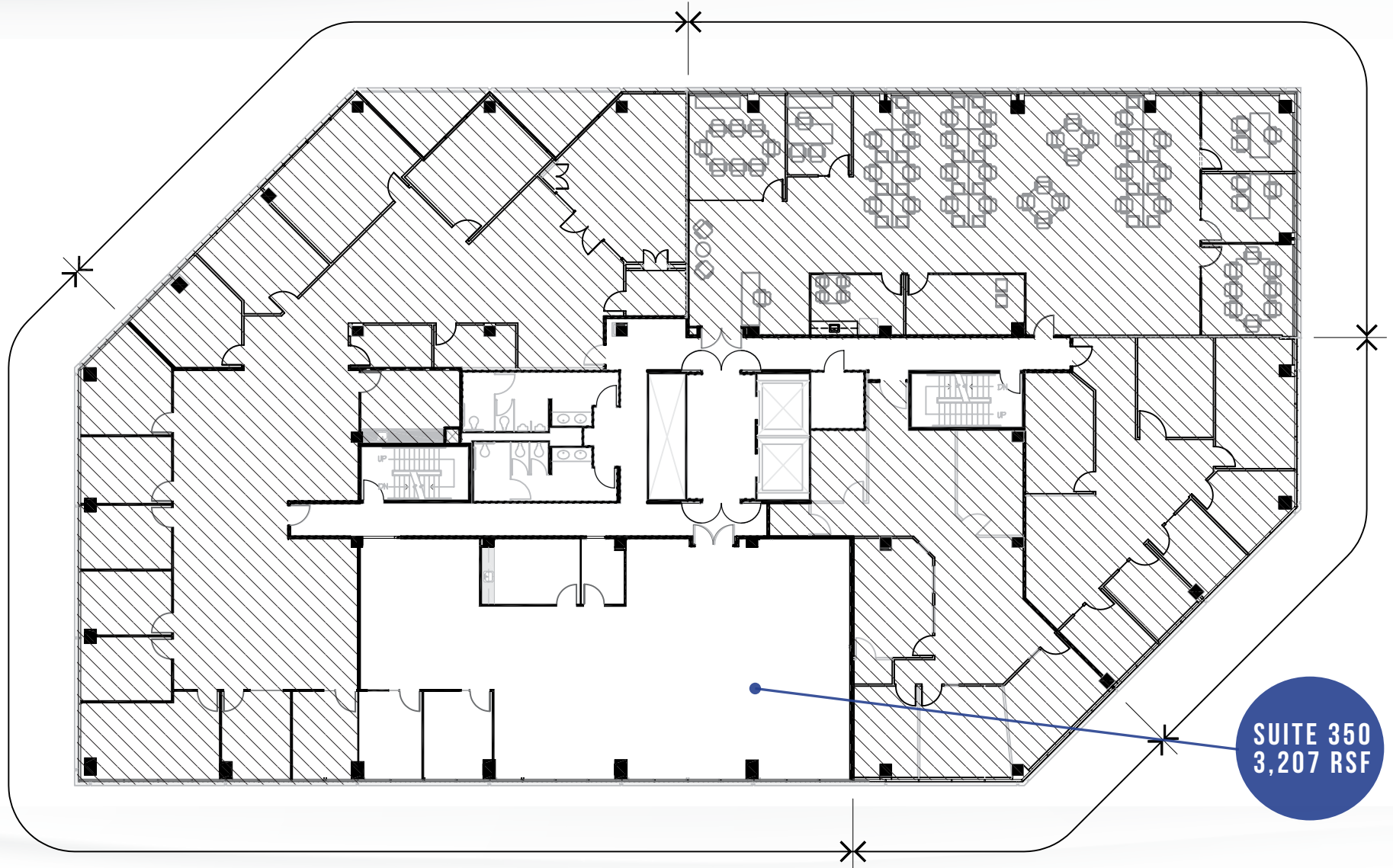
# AVAILABLE SPACES

MARINE PKWY & TWIN DOLPHIN

# FLOOR PLANS

100 MARINE PARKWAY

THIRD FLOOR



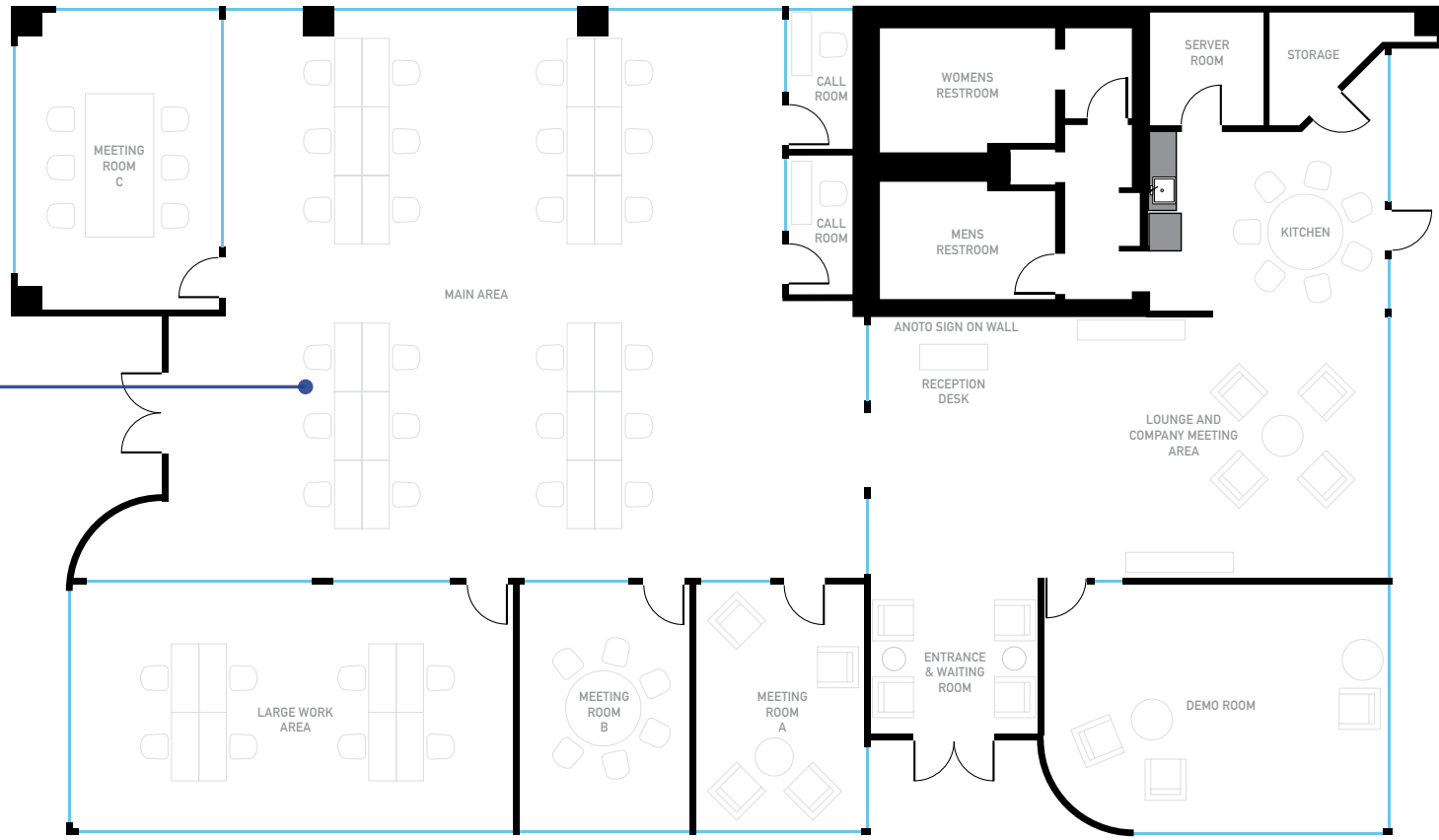
SUITE 350  
3,207 RSF

# FLOOR PLANS

1 TWIN DOLPHIN DRIVE

FIRST FLOOR • Available 11/01/2019

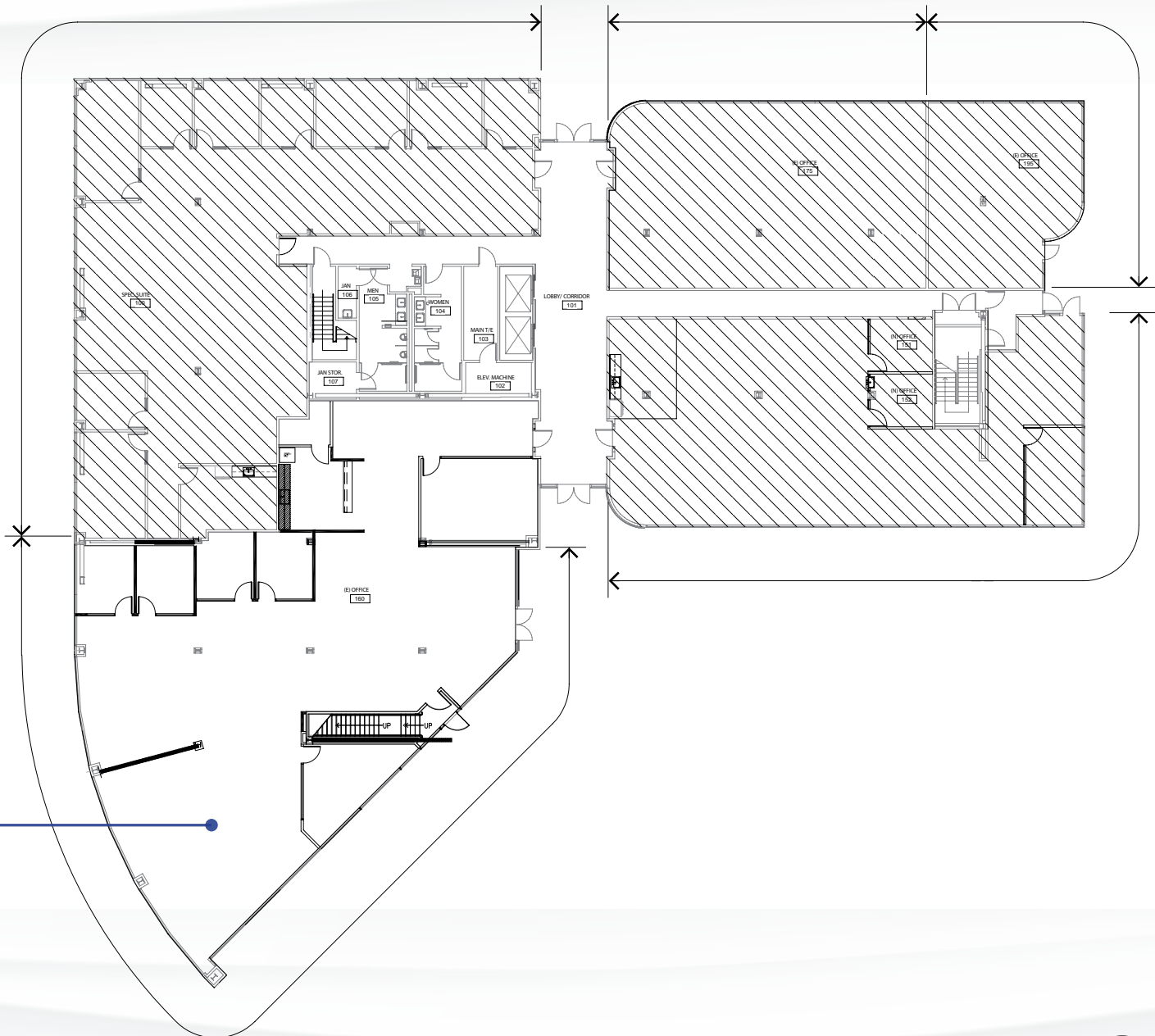
7,008 RSF



# FLOOR PLANS

## 3 TWIN DOLPHIN DRIVE

### FIRST FLOOR



SUITE 160  
6,100 RSF

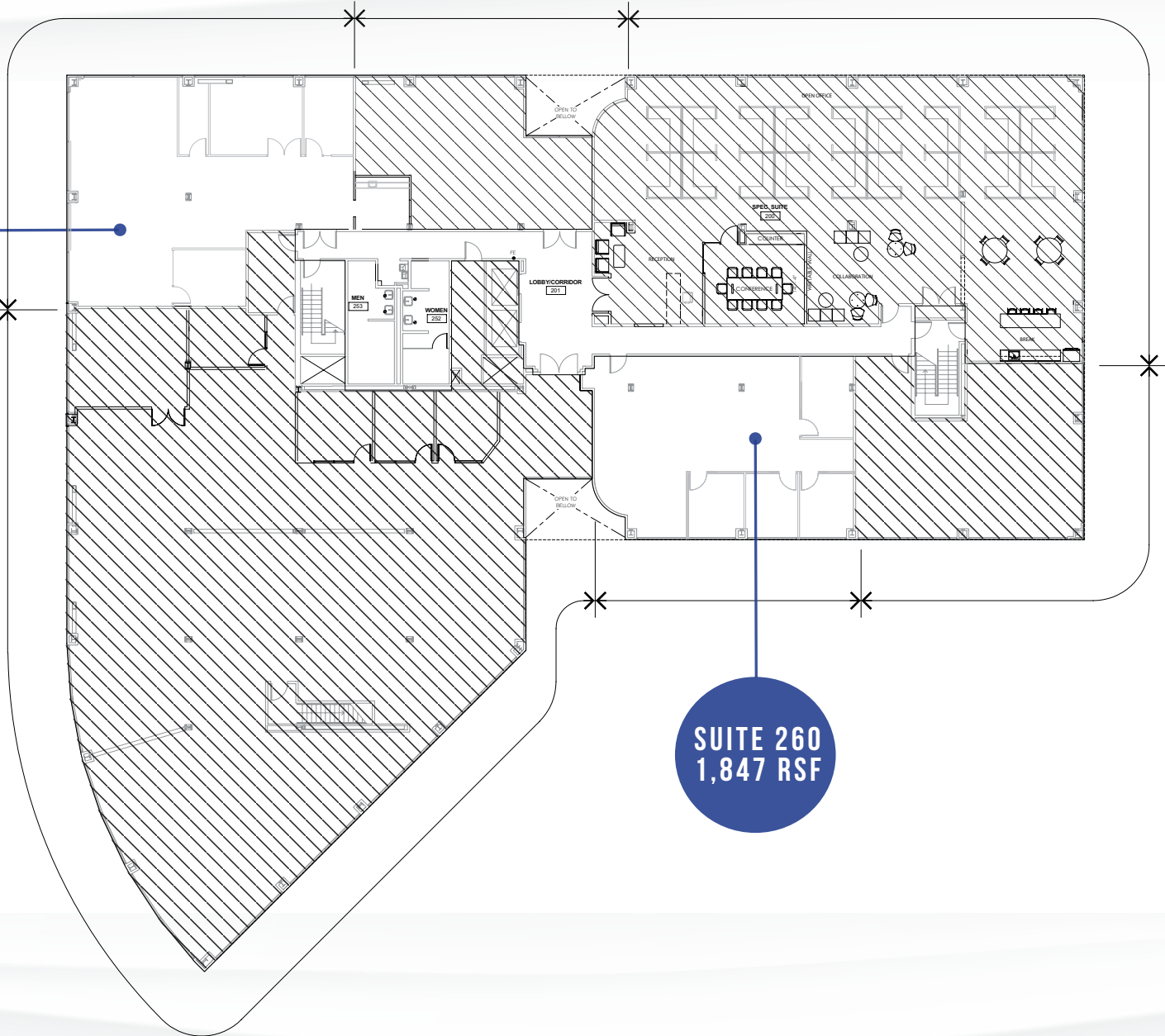


# FLOOR PLANS

## 3 TWIN DOLPHIN DRIVE

### SECOND FLOOR

SUITE 295  
2,404 RSF



SUITE 260  
1,847 RSF

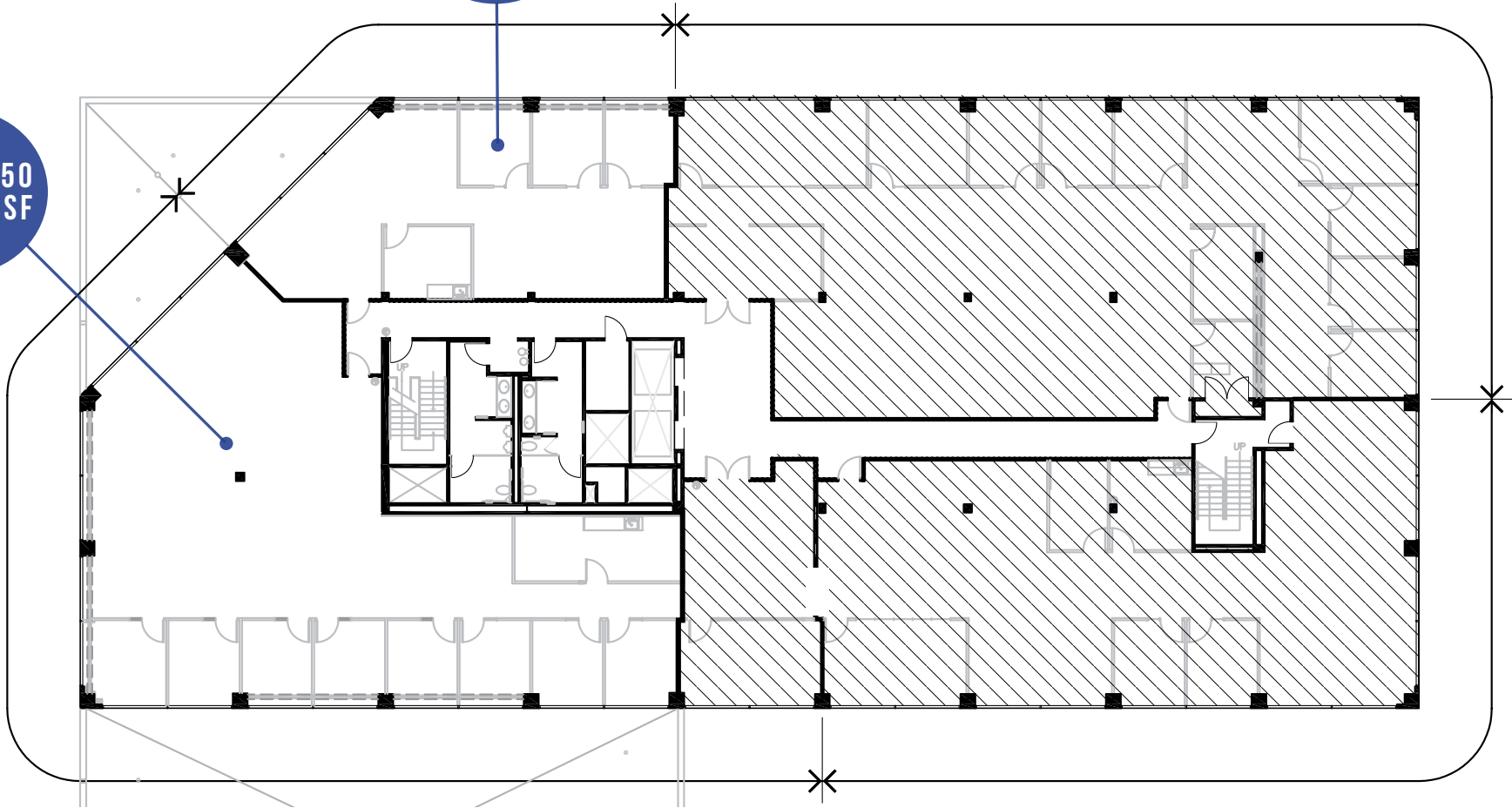
# FLOOR PLANS

3 TWIN DOLPHIN DRIVE

THIRD FLOOR

SUITE 325  
1,736 RSF

SUITE 350  
4,066 RSF



# AMENITIES MAP

## QUICK SERVICE

- 1 Starbucks
- 2 Jamba Juice
- 3 Una Mas Mexican Grill
- 4 Falafel Tazah
- 5 Nob Hill Foods
- 6 Togo's Sandwiches
- 7 Steve's Cafe & Catering
- 8 Starbucks
- 9 In N Out Burger
- 10 Gherkin's Sandwich Shop
- 11 Burger King

## DINING

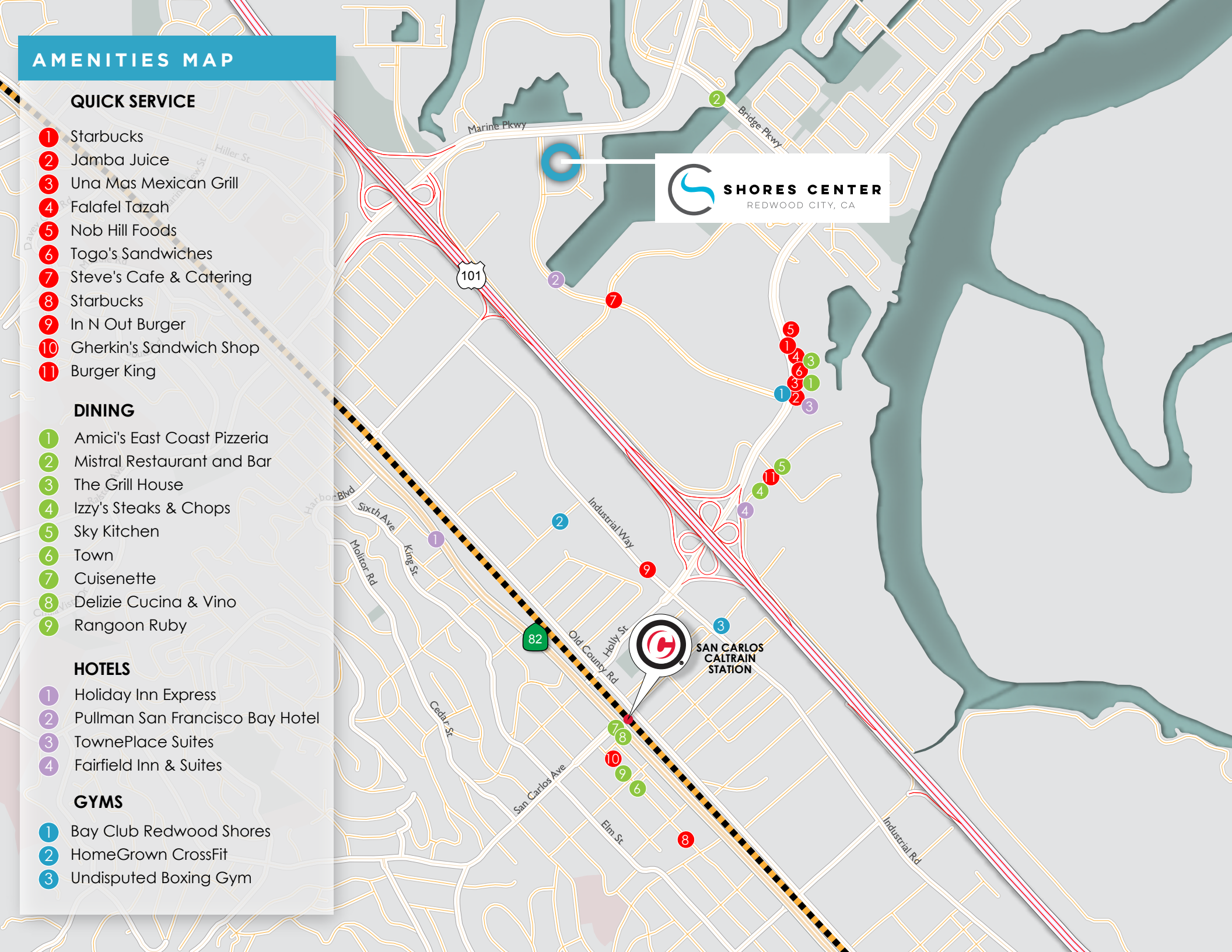
- 1 Amici's East Coast Pizzeria
- 2 Mistral Restaurant and Bar
- 3 The Grill House
- 4 Izzy's Steaks & Chops
- 5 Sky Kitchen
- 6 Town
- 7 Cuisenette
- 8 Delizie Cucina & Vino
- 9 Rangoon Ruby

## HOTELS

- 1 Holiday Inn Express
- 2 Pullman San Francisco Bay Hotel
- 3 TownePlace Suites
- 4 Fairfield Inn & Suites

## GYMS

- 1 Bay Club Redwood Shores
- 2 HomeGrown CrossFit
- 3 Undisputed Boxing Gym



# SHUTTLE SERVICES

## REDWOOD SHORES TWIN DOLPHIN AREA CALTRAIN SCHEDULE + MAP

PM TRAINS

Northbound Train No.	211	221	225	231
Arrives San Carlos	6:55	7:55	8:24	8:55
Southbound Train No.	210	216	220	226
Arrives San Carlos	7:15	7:54	8:15	8:54

AM LOOP					
Depart San Carlos Caltrain Station	7:20	8:00	8:32	9:02	
100 Redwood Shores Pkwy (Bus Stop)	7:25	8:05	8:37	9:07	
555 Twin Dolphin	7:27	8:07	8:39	9:09	
333 Twin Dolphin	7:28	8:08	8:40	9:10	
Shorebreeze	7:30	8:10	8:42	9:12	
Sofitel	7:31	8:11	8:43	9:13	
<b>101 Twin Dolphin (Shores Center)</b>	<b>7:33</b>	<b>8:13</b>	<b>8:45</b>	<b>9:15</b>	
100 Oracle Park	7:35	8:15	8:47	9:17	
300 Oracle Park	7:38	8:18	8:50	9:20	
500 Oracle Park	7:39	8:19	8:51	9:21	

AM TRAINS

PM LOOP						
555 Twin Dolphin	2:25	3:02	3:40	4:46	5:30	6:30
333 Twin Dolphin	2:26	3:03	3:41	4:47	5:30	6:31
Shorebreeze	2:28	3:05	3:43	4:49	5:33	6:33
Sofitel (255 & 275 Shoreline Drive)	2:29	3:06	3:44	4:50	5:34	6:34
<b>101 Twin Dolphin (Shores Center)</b>	<b>2:31</b>	<b>3:08</b>	<b>3:46</b>	<b>4:52</b>	<b>5:36</b>	<b>6:36</b>
100 Oracle Park	2:33	3:10	3:48	4:54	5:38	6:38
300 Oracle Park	2:36	3:13	3:51	4:57	5:41	6:41
500 Oracle Park	2:37	3:14	3:52	4:58	5:42	6:42
100 Redwood Shores Pkwy (Bus Stop)	2:44	3:21	3:59	5:05	5:49	6:49
Arrive San Carlos Caltrain Station	2:54	3:31	4:09	5:15	5:59	6:59

Northbound Train No.	257	159	261	269	277	287
Arrives San Carlos	3:23	3:50	4:29	5:29	6:04	7:04
Southbound Train No.	254	156	258	264	274	284
Arrives San Carlos	3:14	3:52	4:14	5:20	6:20	7:20





# SHORES CENTER

REDWOOD CITY, CA

**JOSH ROWELL**

650.358.5261

[jrowell@ngkf.com](mailto:jrowell@ngkf.com)

CA RE License# 01236434

**CRAIG KALINOWSKI**

650.358.5287

[ckalinowski@ngkf.com](mailto:ckalinowski@ngkf.com)

CA RE License# 01260870

2950 SOUTH DELAWARE STREET, SUITE 125  
SAN MATEO, CA 94403



**ROCKPOINT**  
GROUP



**Newmark**  
**Knight Frank**

The distributor of this communication is performing acts for which a real estate license is required. The information contained herein has been obtained from sources deemed reliable but has not been verified and no guarantee, warranty or representation, either express or implied, is made with respect to such information. Terms of sale or lease and availability are subject to change or withdrawal without notice. 17-1675•06/19