



Imagery ©2020 , Maxar Technologies, U.S. Geological Survey, USDA Farm Service Agency

## 6000 Mounes Street

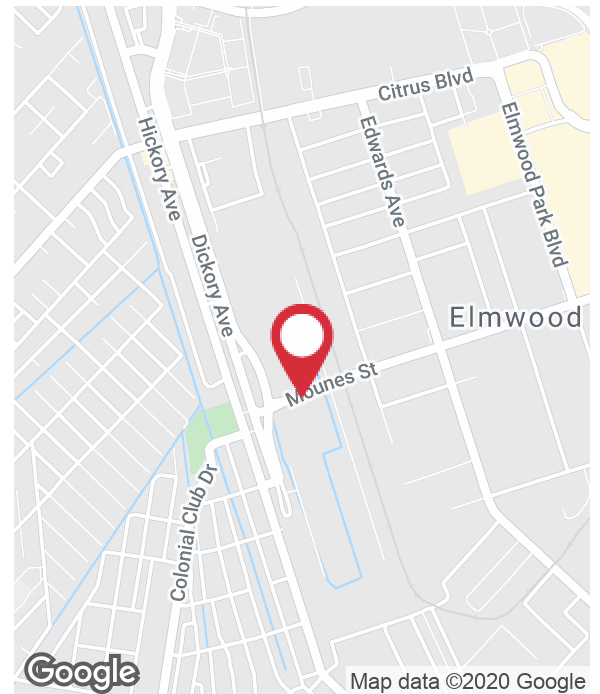
New Orleans, Louisiana 70123

### Property Highlights

- 8.941 acres available
- Located at the corner of Mounes Street and Al Davis Boulevard
- Vacant land subdivided into three parcels
- One of the last properties of this size located in Elmwood
- Zoned commercial (C-2) / CPZ Overlay

### Sale Price

\$7,600,000



For more information

**Michael Naquin**

O: 504 525 1311 | C: 504 444 3972  
mnaquin@latterblum.com

**Carol Logreco**

O: 504 569 9476 | C: 504 914 0579  
clogreco@latterblum.com

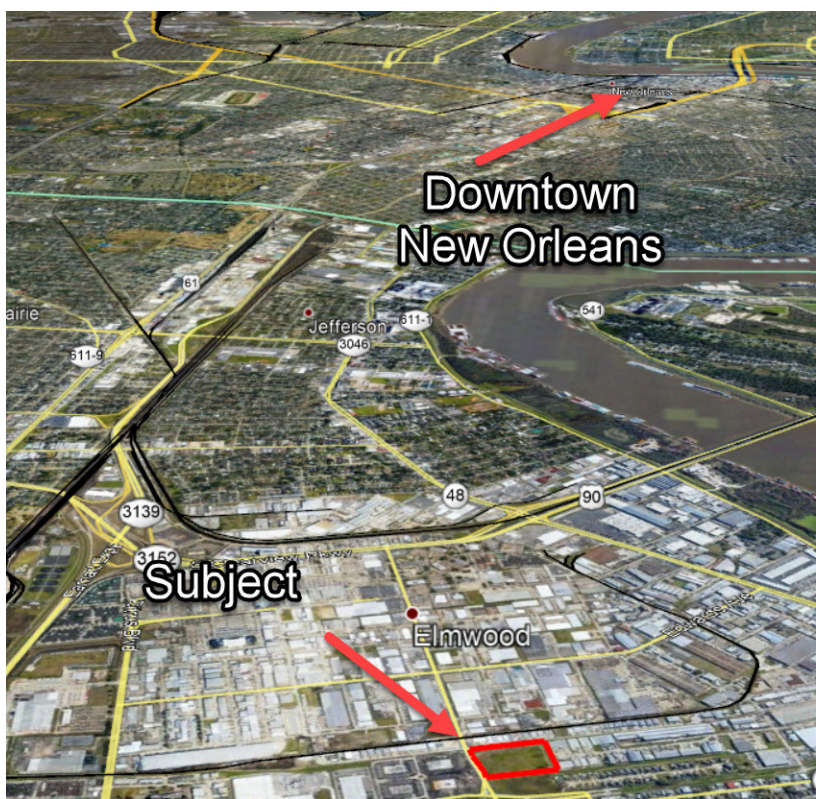
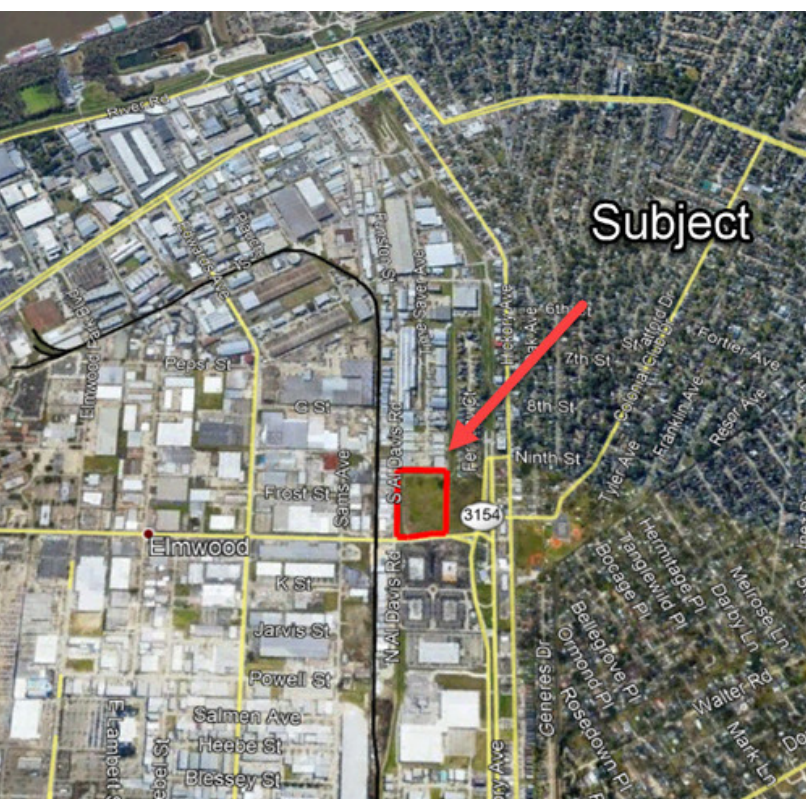
CALL OR EMAIL FOR MORE INFORMATION

NO WARRANTY OR REPRESENTATION, EXPRESS OR IMPLIED, IS MADE AS TO THE ACCURACY OF THE INFORMATION CONTAINED HEREIN, AND THE SAME IS SUBMITTED SUBJECT TO ERRORS, OMISSIONS, CHANGE OF PRICE, RENTAL OR OTHER CONDITIONS, PRIOR SALE, LEASE OR FINANCING, OR WITHDRAWAL WITHOUT NOTICE, AND OF ANY SPECIAL LISTING CONDITIONS IMPOSED BY OUR PRINCIPALS NO WARRANTIES OR REPRESENTATIONS ARE MADE AS TO THE CONDITION OF THE PROPERTY OR ANY HAZARDS CONTAINED THEREIN ARE ANY TO BE IMPLIED. LICENSED IN LOUISIANA.

430 Notre Dame Street  
New Orleans, LA 70130  
504 525 1311 tel  
[latterblum.com](http://latterblum.com)

January 31, 2020

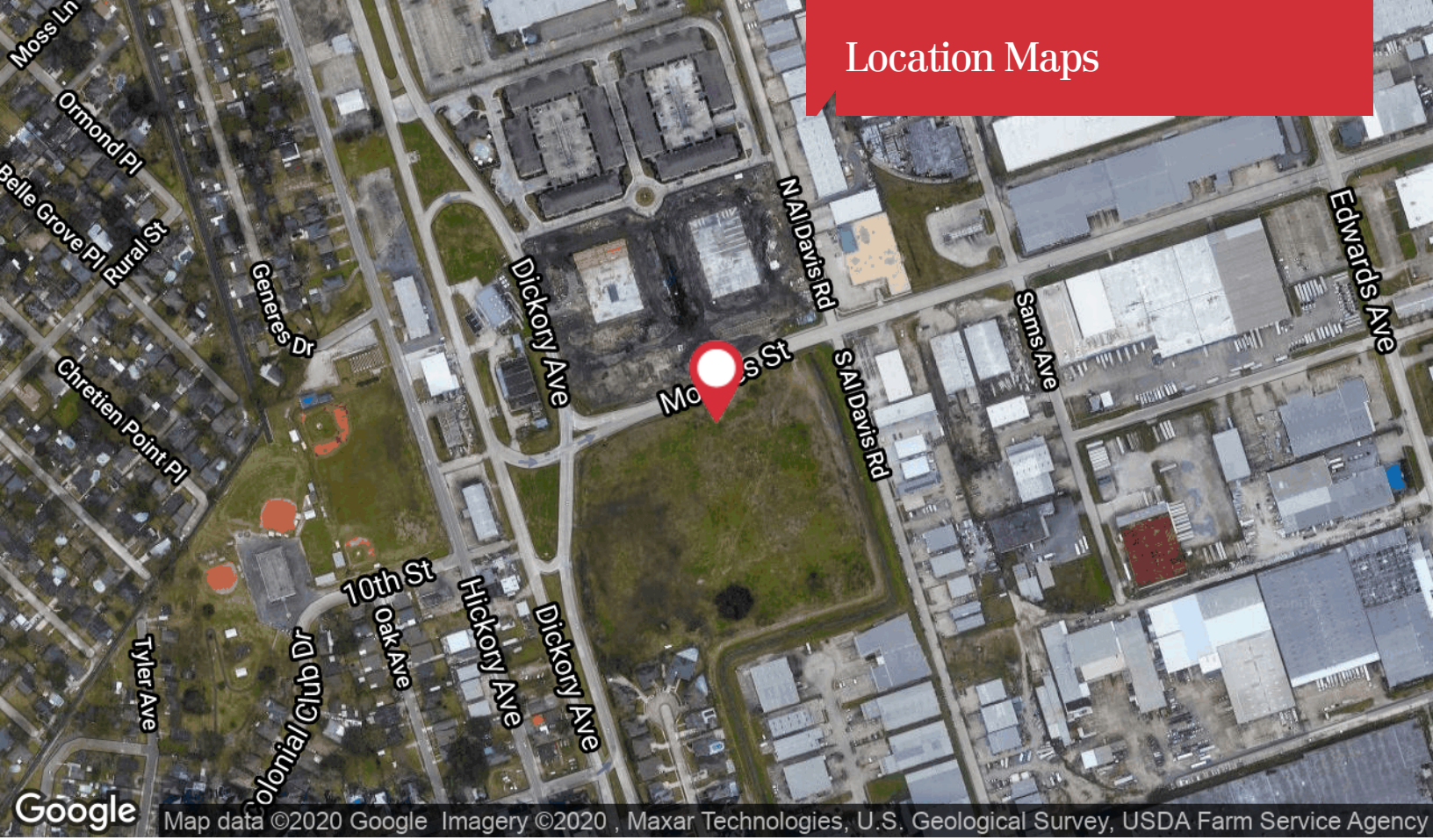




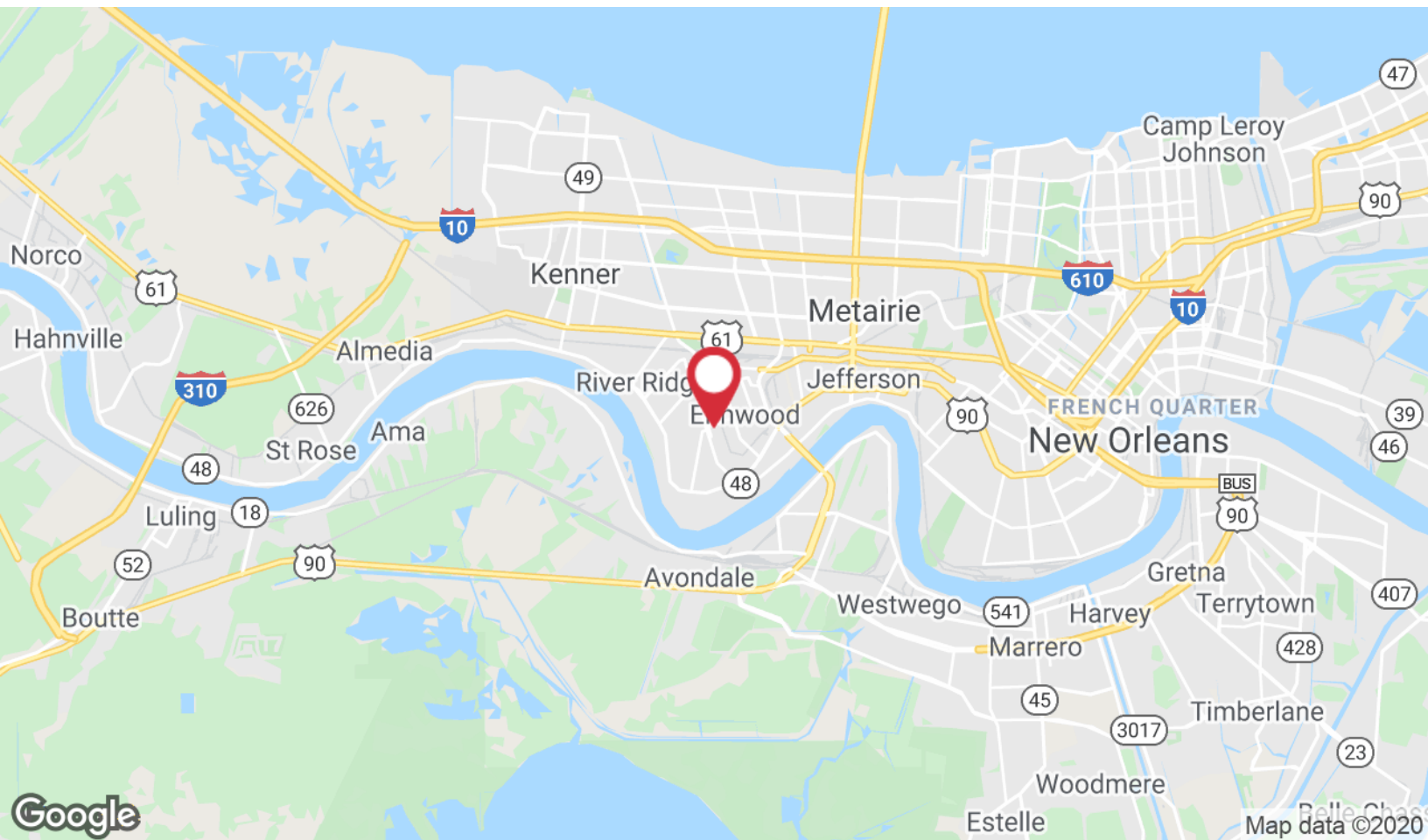




# Location Maps



Map data ©2020 Google Imagery ©2020, Maxar Technologies, U.S. Geological Survey, USDA Farm Service Agency



Map data ©2020



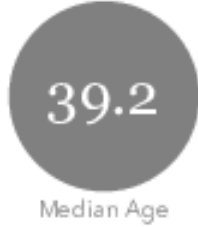
# Retail / Industrial Map



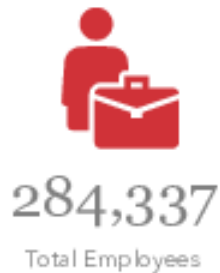
Map data ©2020 Google Imagery ©2020 , Landsat / Copernicus, Maxar Technologies, NOAA, U.S. Geological Survey, USDA Farm Service Agency



KEY FACTS



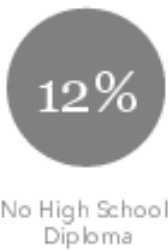
BUSINESS



INCOME



EDUCATION



EMPLOYMENT

