



**Keegan & Coppin**  
COMPANY, INC.

FOR LEASE

502 - 518 TAMALPAIS DRIVE  
CORTE MADERA CA  
PARK MADERA CENTER



Go beyond broker.

REPRESENTED BY:

**VESA BECAM, PARTNER**  
LIC # 01459190 (415) 461-1010, EXT 114  
[VESA@KEEGANCOPPIN.COM](mailto:VESA@KEEGANCOPPIN.COM)





# RETAIL FOR LEASE



502 - 518 TAMALPAIS DRIVE  
PARK MADERA CENTER

## PROPERTY INFORMATION

### HIGHLIGHTS

- Exceptional location
- Adjacent to Corte Madera Town Park
- Easy access to Hwy 101

### RETAIL SPACE

Suite **510B**: 589+/- sq ft

Suite **518A**: 641+/- sq ft

### DESCRIPTION

Former hair salon, large bright room with private restroom and rear storage area.

Former yoga studio, perfect for small fitness uses.

### DESCRIPTION OF PREMISES

The Park Madera Center represents an outstanding opportunity, with a truly exceptional location along Corte Madera's principal thoroughfare in Marin County's first shopping center. The center is located at the heart of central Corte Madera, and houses a variety of retailers.

### DEMOGRAPHICS

	1 Mile	3 Miles	5 Miles
Total 2020 Population:	9,355	78,467	135,881
Median Household Income:	\$144,461	\$138,738	\$134,150
Median Home Value:	\$1,107,547	\$1,076,466	\$1,066,690

### LEASE TERMS

#### Size

589 - 641+/- sq ft

#### Rate

\$3.25 per sq ft

#### Terms

NNN

#### Parking

On-site

#### Zoning

C-1 Local Shopping

Keegan & Coppin Co., Inc.  
101 Larkspur Landing Circle, Ste. 112  
Larkspur, CA 94939  
www.keegancoppin.com  
(415) 461-1010

The above information, while not guaranteed, has been secured from sources we believe to be reliable. Submitted subject to error, change or withdrawal. An interested party should verify the status of the property and the information herein.

REPRESENTED BY:

VESA BECAM, PARTNER  
LIC # 01459190 (415) 461-1010, EXT 114  
VESA@KEEGANCOPPIN.COM



# RETAIL FOR LEASE



502 - 518 TAMALPAIS DRIVE  
PARK MADERA CENTER

## DESCRIPTION OF AREA

Located approximately 12 miles north of San Francisco, Corte Madera is one of the most active commercial communities in Marin County. In addition to its 9,425 residents, all of Marin considers Corte Madera to be its shopping area because of its central location and its prevalence of retailers and service providers.

## NEARBY AMENITIES

- Steps from dozens of cafes, shops and restaurants
- Private and public schools, from preschool through high school
- Thriving cultural community
- Two blocks from Corte Madera Town Center
- Minutes from the Village at Corte Madera

## TRANSPORTATION ACCESS



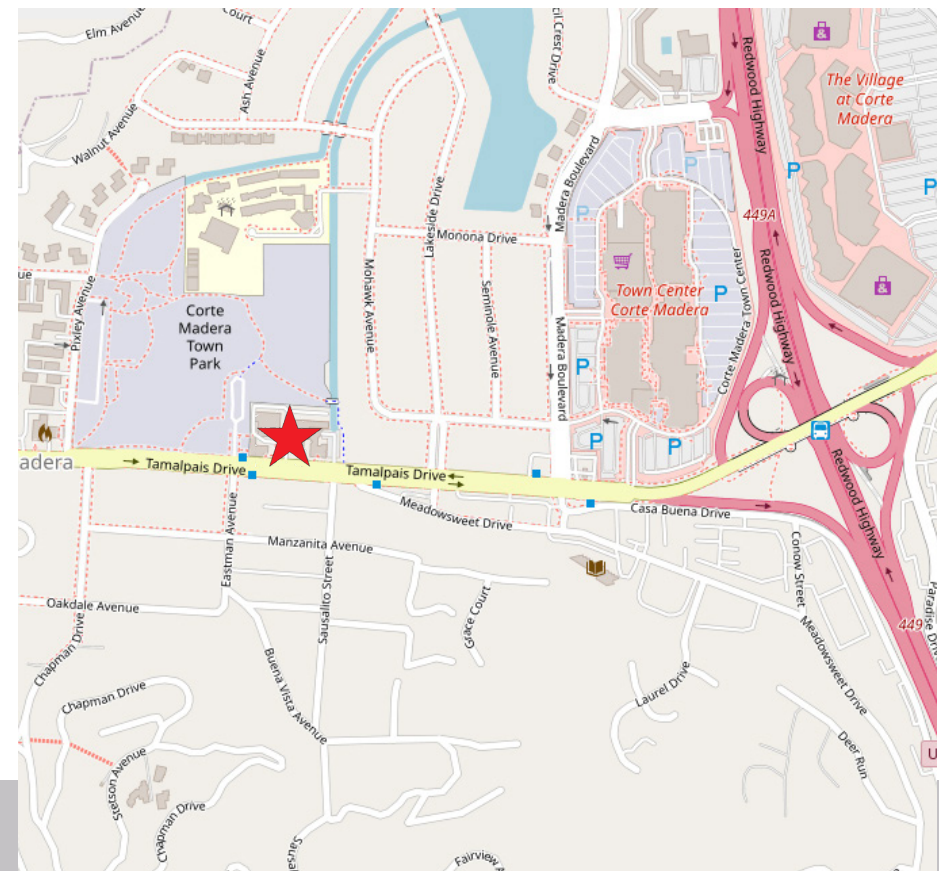
4 minutes



9 minutes



Serviced by Routes 30 and 70



REPRESENTED BY:

VESA BECAM, PARTNER  
LIC # 01459190 (415) 461-1010, EXT 114  
VESA@KEEGANCOPPIN.COM



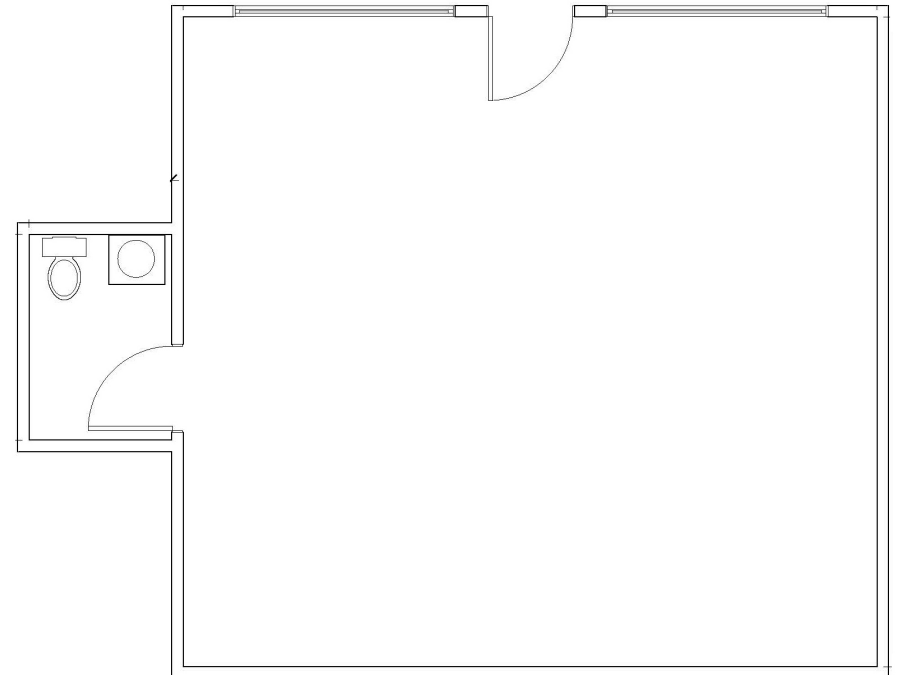
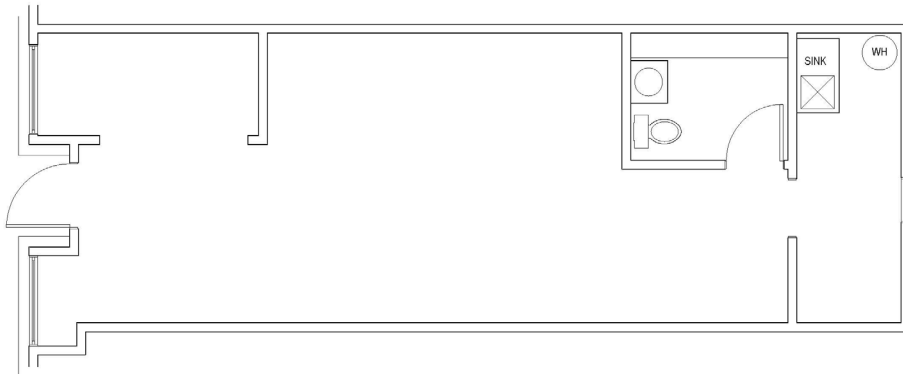
# 502 - 518 TAMALPAIS DRIVE FLOOR PLANS



502 - 518 TAMALPAIS DRIVE  
PARK MADERA CENTER

SUITE 510B  
589+/- SQ FT

SUITE 518A  
641+/- SQ FT



REPRESENTED BY: VESA BECAM, PARTNER  
LIC # 01459190 (415) 461-1010, EXT 114  
VESA@KEEGANCOPPIN.COM

The above information, while not guaranteed, has been secured from sources we believe to be reliable. Submitted subject to error, change or withdrawal. An interested party should verify the status of the property and the information herein.