

±1,084 & ±1,290 SF Available

Property Highlights

- Safeway anchored center located at Waterman Blvd. exit right off I-80
- Tenants in the center include: First Bank, Round Table Pizza, and UPS Store
- Excellent freeway visibility
- Good parking on-site

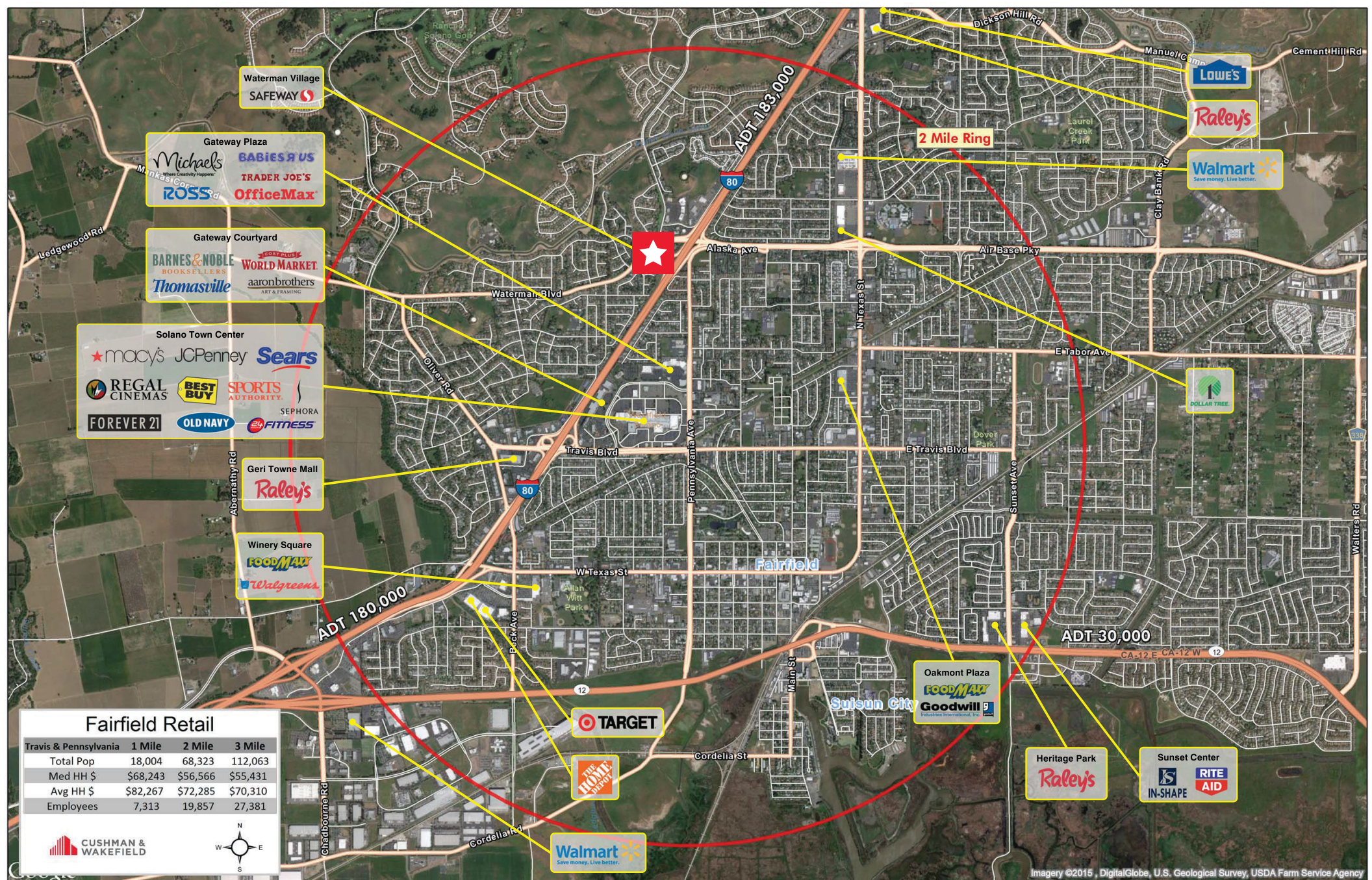
Traffic Counts

| | |
|---|-------------|
| I-80 & Airbase Parkway | 183,000 ADT |
| Waterman Blvd. b/n Ten Gate Rd. & Hilborn | 18,489 ADT |

Ray Devlin

Director - Retail Services
+1 925 627 2883
ray.devlin@cushwake.com
LIC #01199417

1333 N. California Blvd, Suite 550
Walnut Creek, CA
main +1 925 930 0770
fax +1 925 935 3409
cushmanwakefield.com

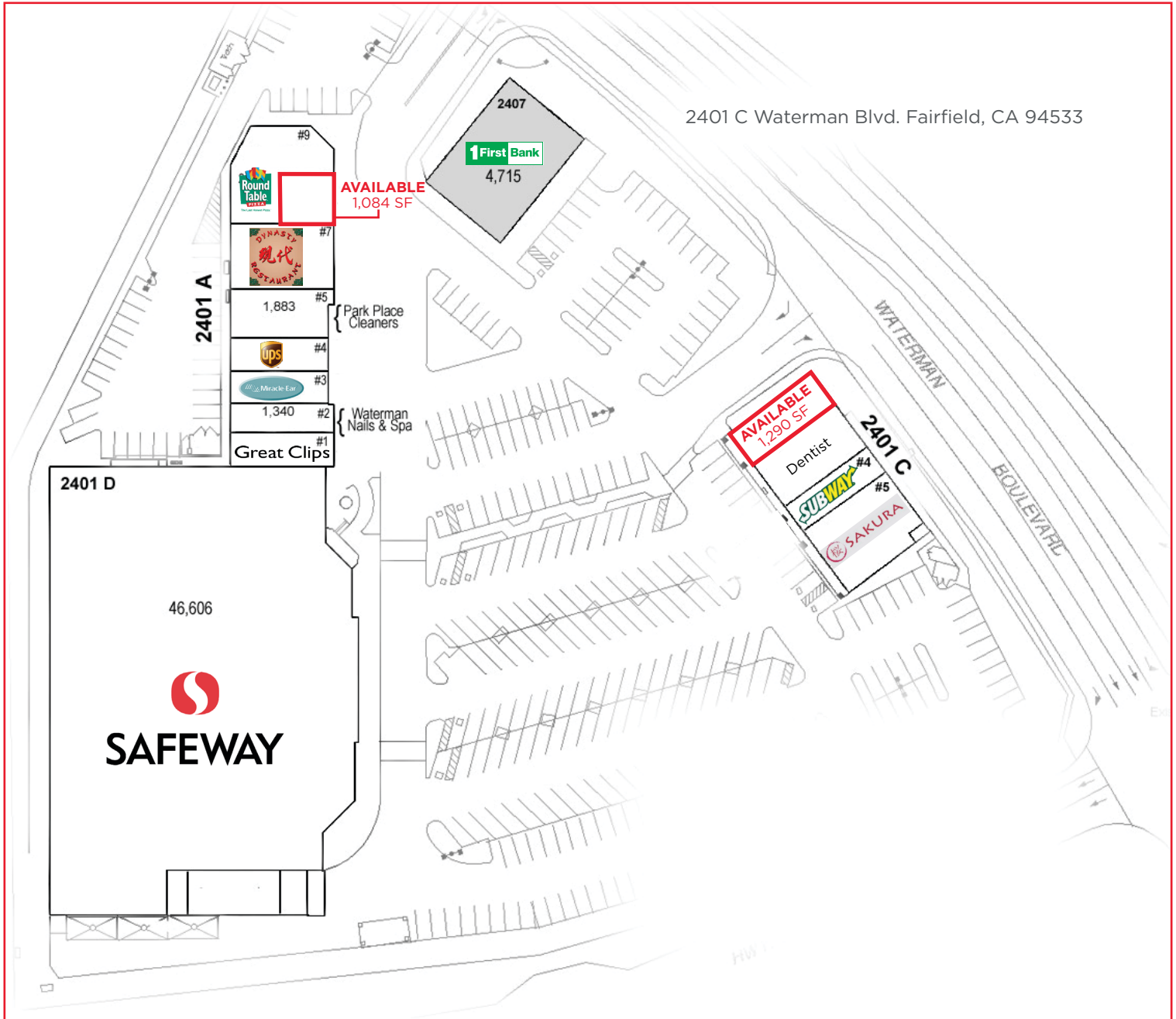


Fairfield Retail

| Travis & Pennsylvania | 1 Mile | 2 Mile | 3 Mile |
|-----------------------|----------|----------|----------|
| Total Pop | 18,004 | 68,323 | 112,063 |
| Med HH \$ | \$68,243 | \$56,566 | \$55,431 |
| Avg HH \$ | \$82,267 | \$72,285 | \$70,310 |
| Employees | 7,313 | 19,857 | 27,381 |

CUSHMAN & WAKEFIELD

Site Plan



Ray Devlin
Director - Retail Services
+1 925 627 2883
ray.devlin@cushwake.com
LIC #01199417

1333 N. California Blvd, Suite 550
Walnut Creek, CA
main +1 925 930 0770
fax +1 925 935 3409
cushmanwakefield.com



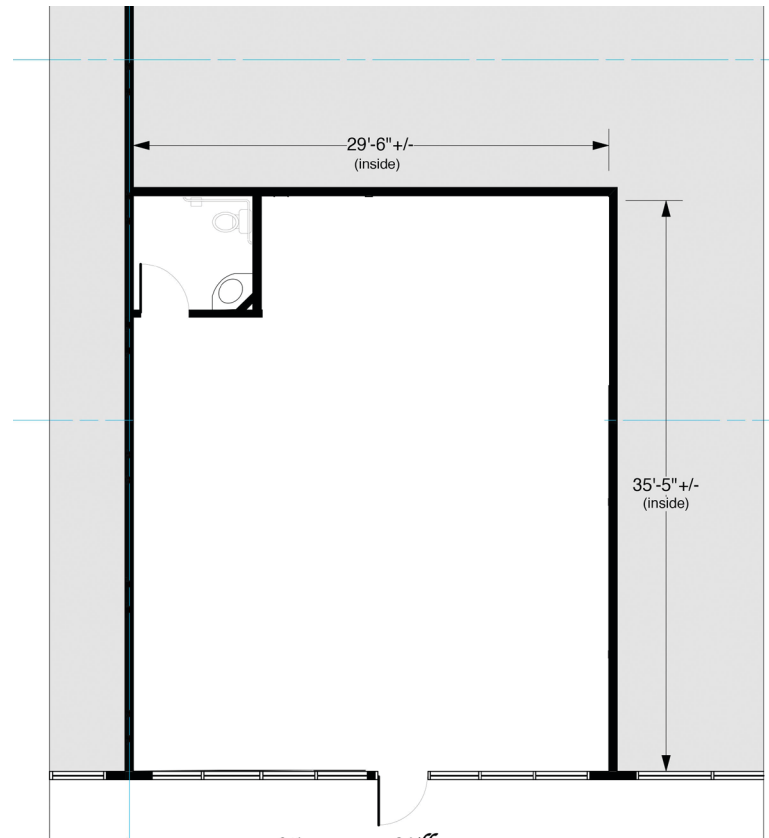
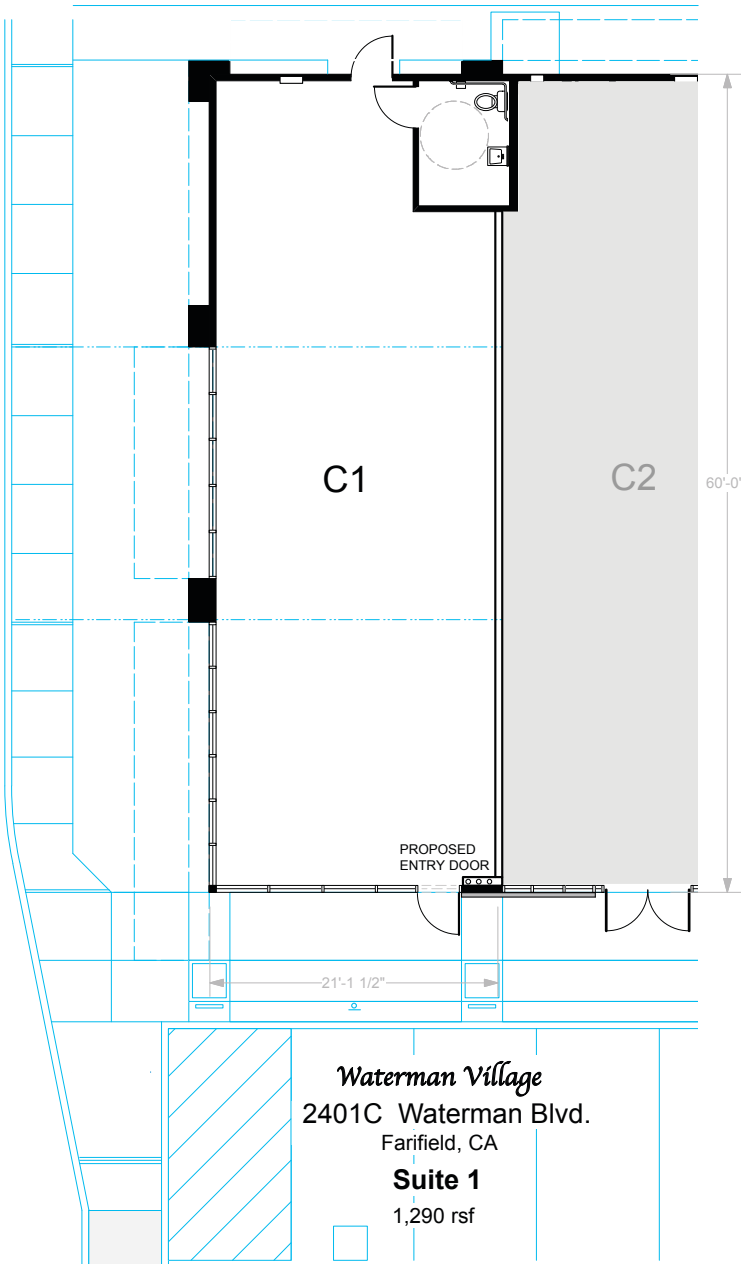
**CUSHMAN &
WAKEFIELD**

FOR LEASE

Waterman Village Shopping Center

Fairfield, CA

Floor Plan



Waterman Village

Fairfield, CA

2401A Waterman Blvd.

Suite #8

March 2018

1,084 rsf

Ray Devlin

Director - Retail Services
+1 925 627 2883
ray.devlin@cushwake.com
LIC #01199417

1333 N. California Blvd, Suite 550
Walnut Creek, CA
main +1 925 930 0770
fax +1 925 935 3409
cushmanwakefield.com