

West Valley at 224

22330 68th Avenue South
Building A
Kent, WA

18,560 SF total

5,269 SF two-story office

20' clear height

4 dock-high / 2 drive-in

High image / identity park

Great access

\$0.45 / \$0.75

Available December 31, 2015

**Great exposure / frontage along
West Valley Highway**



Location



Contact

Matt Wood, SIOR

206.248.7306

mwood@kiddermathews.com

Peter Wooding

206.248.7301

pwooding@kiddermathews.com

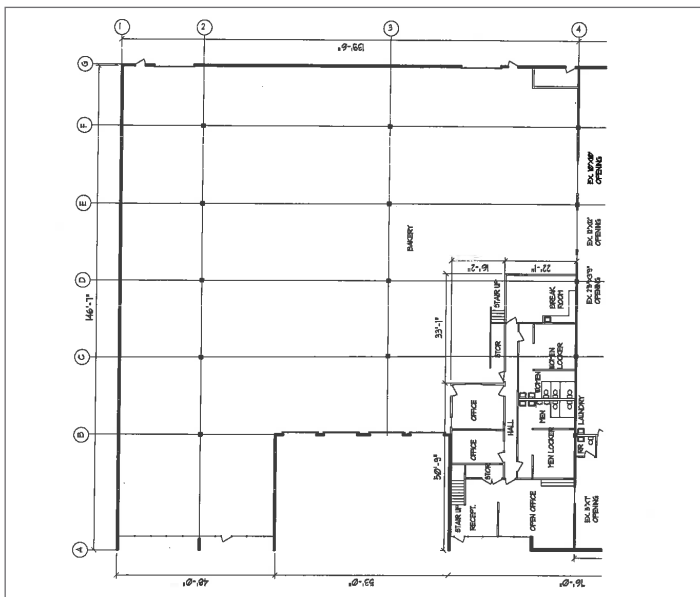
Former Food Grade

Power upgrades,
floor drains &
potential equipment
(freezers / coolers
& washracks)

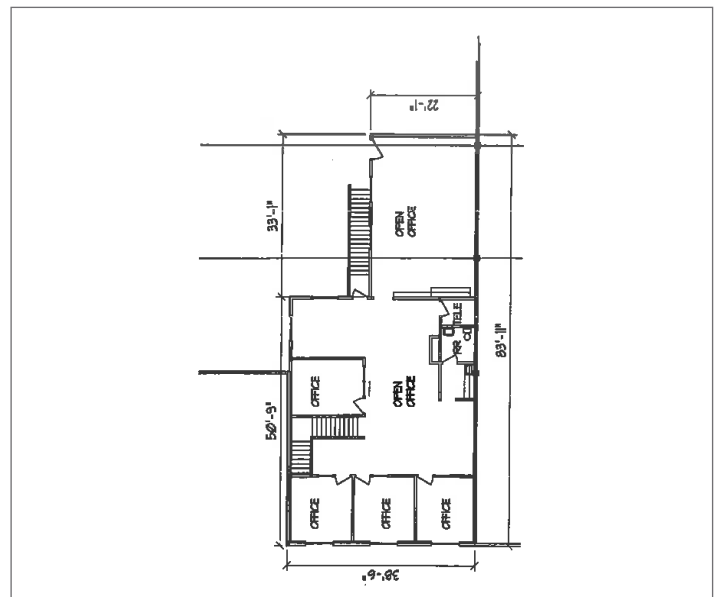
West Valley at 224



Ground Floor



Upper Floor



Contact

Matt Wood, SIOR
 206.248.7306
 mwood@kiddermathews.com

Peter Wooding
 206.248.7301
 pwooding@kiddermathews.com