



Seventh & John Street

701 John Street, Seattle, WA 98109 at Denny Park

Property Highlights

- In the heart of South Lake Union
- The property is visible from almost every Seattle high-rise
- A Space Needle Distance away from the Seattle Center
- 225 feet from Denny Park and 400 feet from Elephant Car Wash
- Zoned SM-SLU 240-125-440
- 10 parking stalls
- 1,640 square feet of retail
- \$5,000.00 NNN (\$3,000.00 Tax) per month
- John Street is the newly designated "Festival Street"



Kurt Sorensen

Senior Vice President | 206.332.1490
ksorensen@nai-psp.com





FOR LEASE



RETAIL

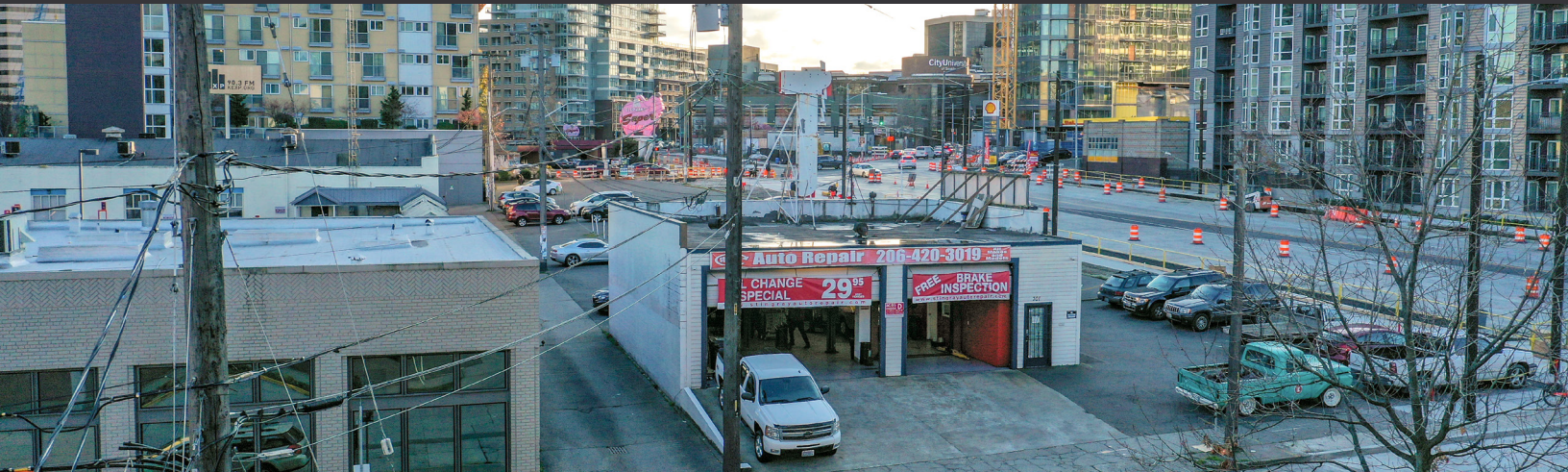


1,640 SF

Potential uses include: automotive, retail, and restaurant



1/2 block from Elephant Car Wash



View the full video tour on YouTube - <https://buff.ly/34XFwyS>



Kurt Sorensen
Senior Vice President | 206.332.1490
ksorensen@nai-psp.com



<https://www.nai-psp.com>

THE INFORMATION SUPPLIED HEREIN IS FROM SOURCES WE DEEM RELIABLE. IT IS PROVIDED WITHOUT ANY REPRESENTATION, WARRANTY OR GUARANTEE, EXPRESSED OR IMPLIED, AS TO ITS ACCURACY. PROSPECTIVE BUYER OR TENANT SHOULD CONDUCT AN INDEPENDENT INVESTIGATION AND VERIFICATION OF ALL MATTERS DEEMED TO BE MATERIAL, INCLUDING, BUT NOT LIMITED TO, STATEMENTS OF INCOME AND EXPENSES. CONSULT YOUR ATTORNEY, ACCOUNTANT OR OTHER PROFESSIONAL ADVISOR.



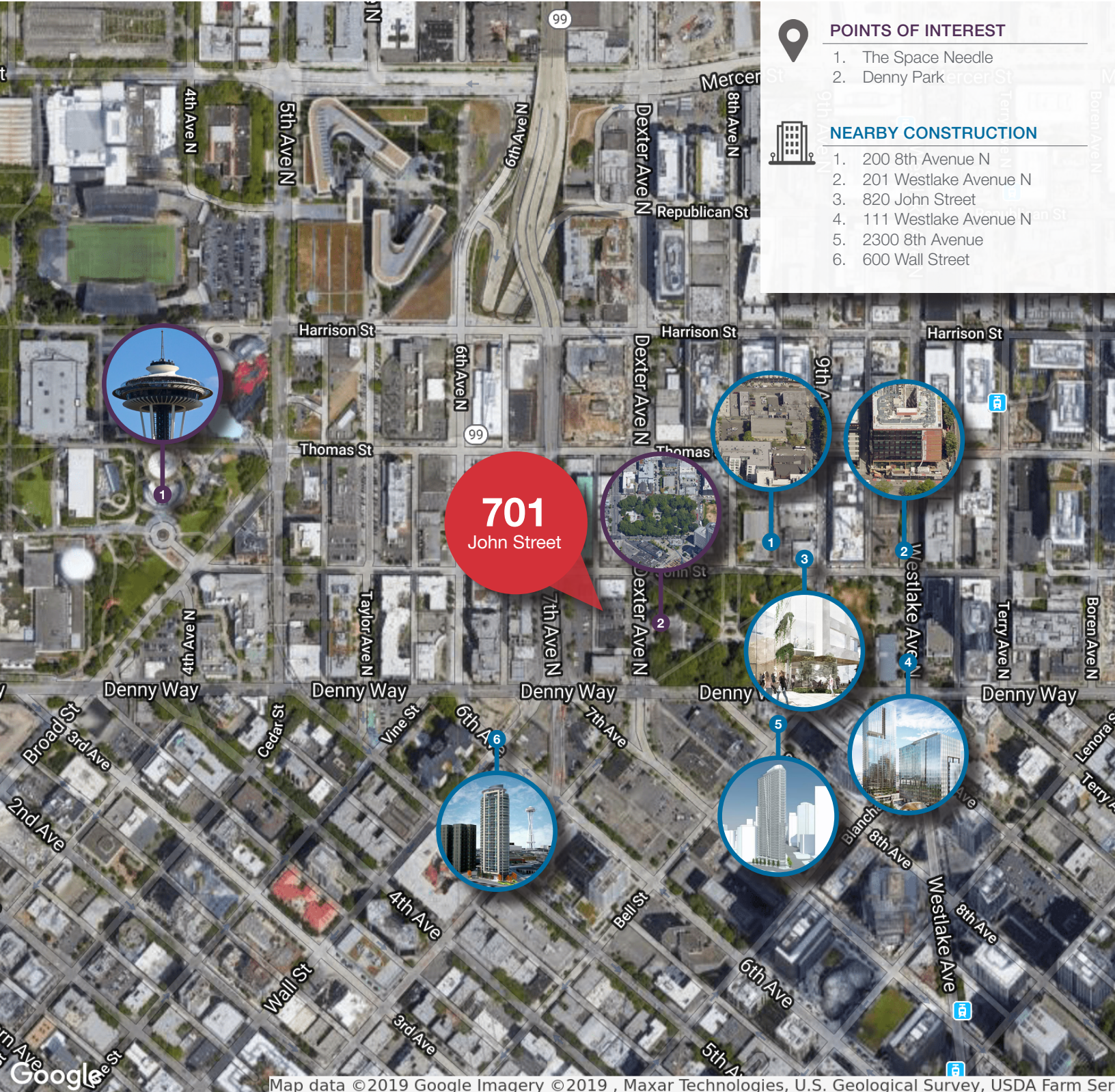
FOR LEASE



RETAIL



1,640 SF



POINTS OF INTEREST

1. The Space Needle
2. Denny Park



NEARBY CONSTRUCTION

1. 200 8th Avenue N
2. 201 Westlake Avenue N
3. 820 John Street
4. 111 Westlake Avenue N
5. 2300 8th Avenue
6. 600 Wall Street

Map data ©2019 Google Imagery ©2019 , Maxar Technologies, U.S. Geological Survey, USDA Farm Ser

Kurt Sorensen

Senior Vice President | 206.332.1490
ksorensen@nai-psp.com



<https://www.nai-psp.com>

THE INFORMATION SUPPLIED HEREIN IS FROM SOURCES WE DEEM RELIABLE. IT IS PROVIDED WITHOUT ANY REPRESENTATION, WARRANTY OR GUARANTEE, EXPRESSED OR IMPLIED, AS TO ITS ACCURACY. PROSPECTIVE BUYER OR TENANT SHOULD CONDUCT AN INDEPENDENT INVESTIGATION AND VERIFICATION OF ALL MATTERS DEEMED TO BE MATERIAL, INCLUDING, BUT NOT LIMITED TO, STATEMENTS OF INCOME AND EXPENSES. CONSULT YOUR ATTORNEY, ACCOUNTANT OR OTHER PROFESSIONAL ADVISOR.