

////////////////////

SLATE CREEK CORPORATE CENTRE

3300, 3400 & 3500 Douglas Boulevard,
//////////////////// Roseville

AVAILABLE FOR LEASE



Walking distance to retail
and services



Building and Monument
Signage available



Building shared conference
room



Renovated fitness facility
onsite



Electric vehicle charging
stations



CHRIS LEMMON | 916.367.6349
clemmon@ngkf.com
CA RE License #01506816

ZAC COLLIE | 916.367.6347
zcollie@ngkf.com
CA RE License #01841055





CHRIS LEMMON | 916.367.6349
 clemmon@ngkf.com
 CA RE License #01506816

ZAC COLLIE | 916.367.6347
 zcollie@ngkf.com
 CA RE License #01841055





3005 Douglas Blvd, Suite 130, Roseville, CA 95661

CHRIS LEMMON | 916.367.6349

clemmon@ngkf.com

CA RE License #01506816

ZAC COLLIE | 916.367.6347

zcollie@ngkf.com

CA RE License #01841055

 **Newmark
Knight Frank**

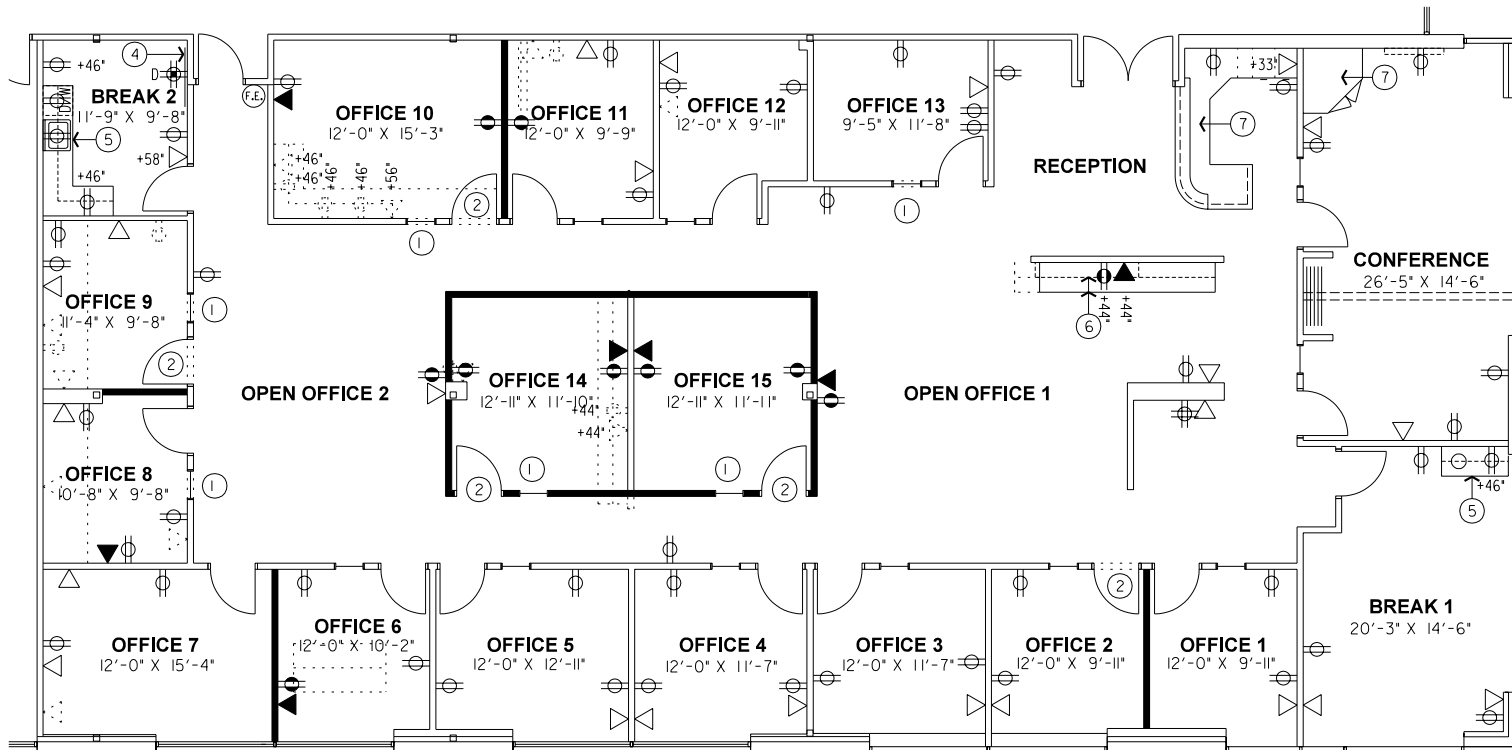
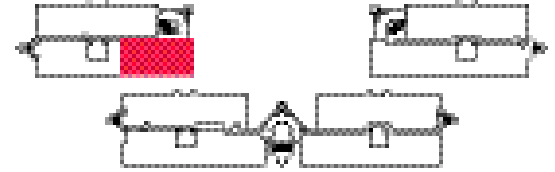
 **RIDGE CAPITAL**

The distributor of this communication is performing acts for which a real estate license is required. The information contained herein has been obtained from sources deemed reliable but has not been verified and no guarantee, warranty or representation, either express or implied, is made with respect to such information. Terms of sale or lease and availability are subject to change or withdrawal without notice. // 17-0065 -01/19

3300 Douglas Boulevard, Suite 280
±5,456 RSF (AVAILABLE 90 DAYS)



Click for Photos
Suite 280



3005 Douglas Blvd, Suite 130, Roseville, CA 95661

CHRIS LEMMON | 916.367.6349

clemmon@ngkf.com

CA RE License #01506816

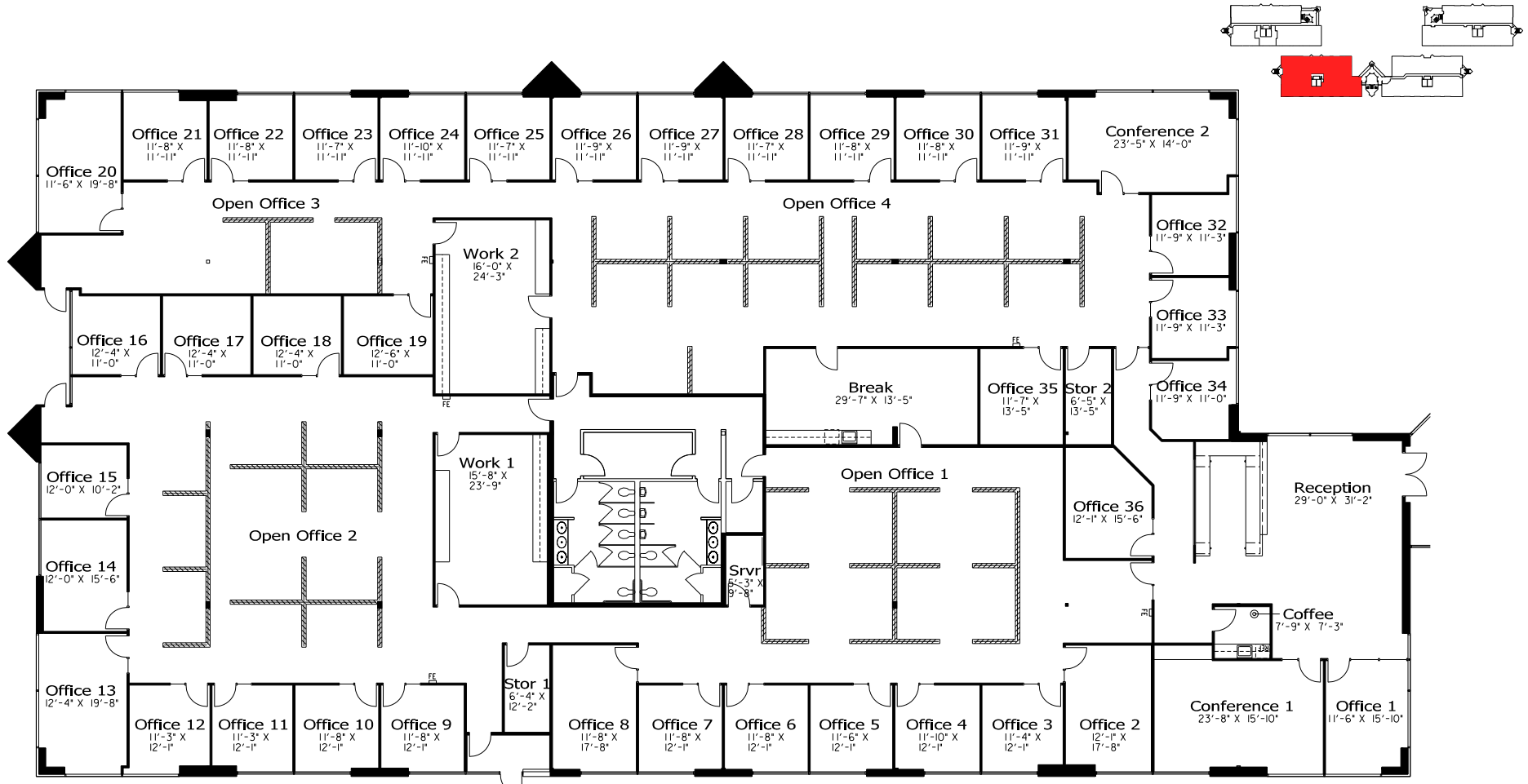
ZAC COLLIE | 916.367.6347

zcollie@ngkf.com

CA RE License #01841055



3400 Douglas Boulevard, Suite 100
Up to ± 19,484 RSF (Divisible 5,000 - 19,484 RSF)

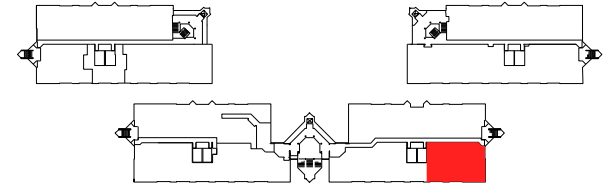
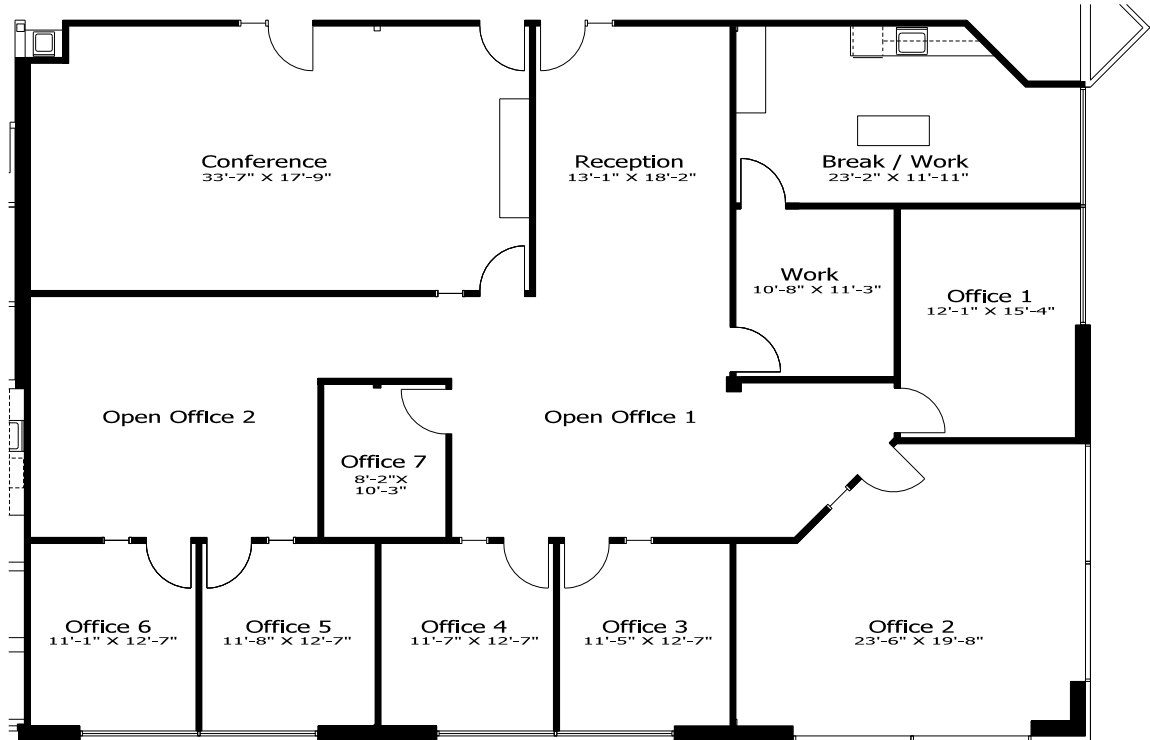


CHRIS LEMMON | 916.367.6349
 clemmon@ngkf.com
 CA RE License #01506816

ZAC COLLIE | 916.367.6347
 zcollie@ngkf.com
 CA RE License #01841055



3400 Douglas Boulevard, Suite 150
3,882 RSF



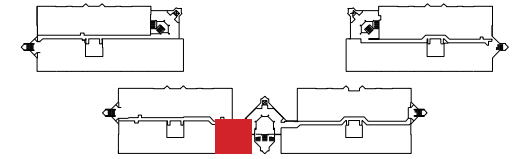
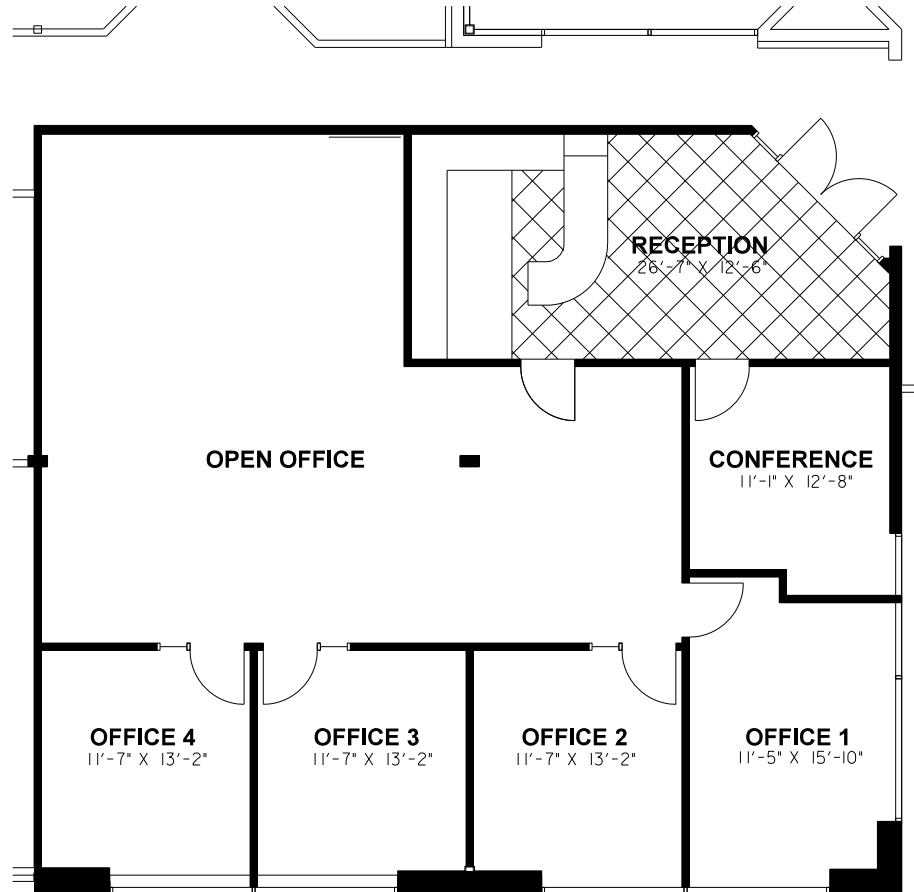
[Click for Photos
Suite 150](#)

CHRIS LEMMON | 916.367.6349
clemmon@ngkf.com
CA RE License #01506816

ZAC COLLIE | 916.367.6347
zcollie@ngkf.com
CA RE License #01841055



3400 Douglas Boulevard, Suite 235
±2,274 RSF



[Click for Photos Suite 235](#)

3005 Douglas Blvd, Suite 130, Roseville, CA 95661

CHRIS LEMMON | 916.367.6349

clemmon@ngkf.com

CA RE License #01506816

ZAC COLLIE | 916.367.6347

zcollie@ngkf.com

CA RE License #01841055



The distributor of this communication is performing acts for which a real estate license is required. The information contained herein has been obtained from sources deemed reliable but has not been verified and no guarantee, warranty or representation, either express or implied, is made with respect to such information. Terms of sale or lease and availability are subject to change or withdrawal without notice. // 17-0065 -01/19