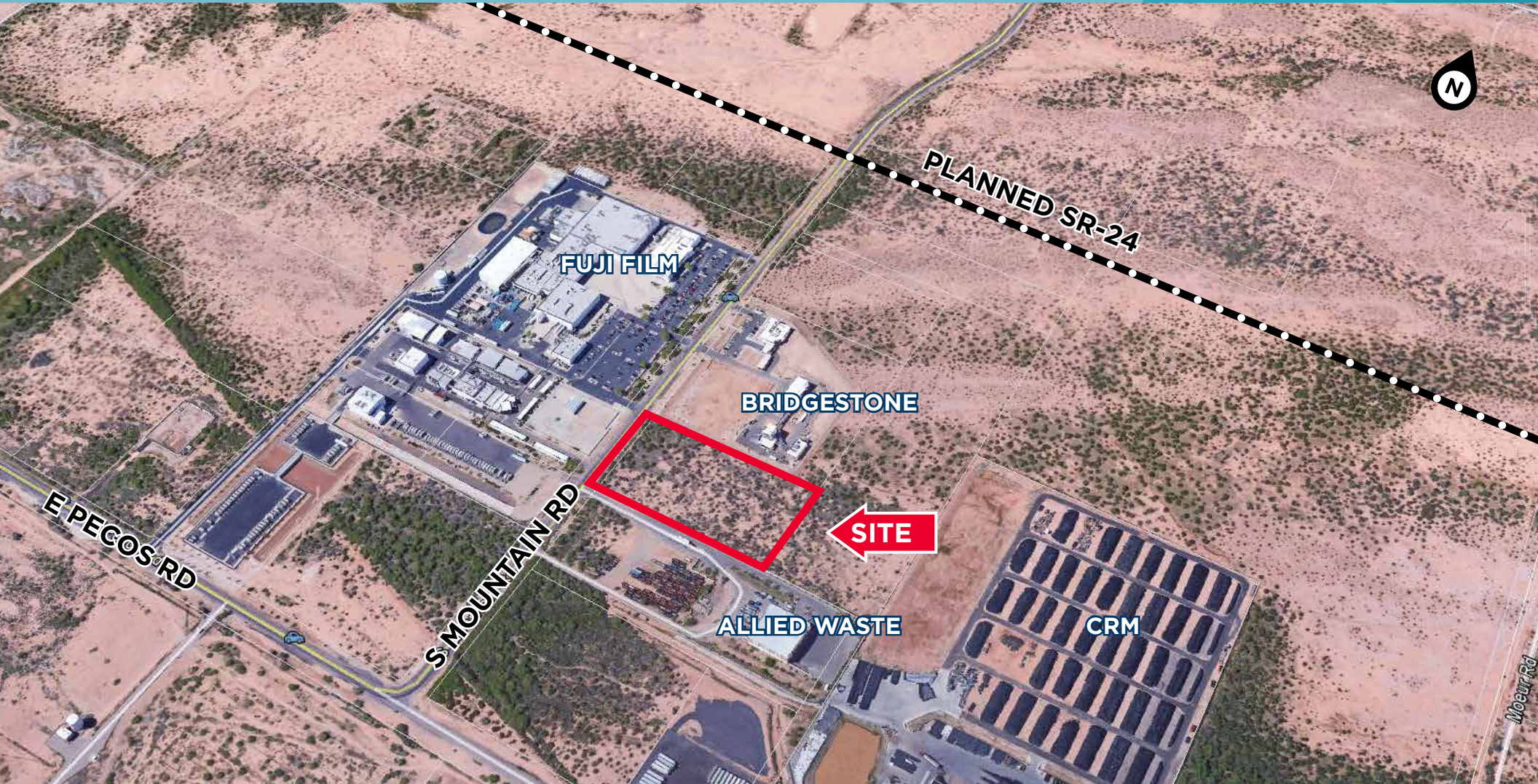




Industrial Development/User Site

NNEC East Pecos Road & South Mountain Road / Mesa, Arizona / ±5.18 Acres



Kent Hanson
Senior Director
+1 602 224.4433
kent.hanson@cushwake.com

Pete Klees
Senior Director
+1 602 224 4415
pete.klees@cushwake.com

2555 E. Camelback Rd, Ste 400
Phoenix, Arizona 85016
ph: +1 602 954 9000 fx: +1 602 253 0528
cushmanwakefield.com



Industrial Development/User Site

NNEC East Pecos Road & South Mountain Road / Mesa, Arizona / ±5.18 Acres

Site Features

Location:	East Pecos Road & South Mountain Road, Mesa, AZ
Land size:	±5.18 Acres
Zoning:	AG with Industrial Overlay (Mostly GI zoning on surrounding parcels)
Utilities:	Electricity - SRP; Water/Sewer - City of Mesa; Gas - Southwest Gas
Dimensions:	350 ft x 650ft
Parcel #:	304-34-036D
Price:	\$5.00/SF
Other:	Close proximity to SR-24 and Loop-202



Kent Hanson
Senior Director
+1 602 224.4433
kent.hanson@cushwake.com

Pete Klees
Senior Director
+1 602 224 4415
pete.klees@cushwake.com

2555 E. Camelback Rd, Ste 400
Phoenix, Arizona 85016
ph: +1 602 954 9000 fx: +1 602 253 0528
cushmanwakefield.com