



IT'S TIME TO VIEW RIVERPLACE IN A WHOLE NEW LIGHT.

Experience the renaissance at Riverplace Offices Northeast, a one-of-a-kind "historic meets modern" workplace destination.

[riverplaceoffices.com](http://riverplaceoffices.com)





Collaborative work areas with abundant natural light



Spacious conference and training rooms



Upgraded tenant lounge with fireplace



Newly renovated rooftop deck with city views

Significant capital improvements have been designed to enhance Riverplace's sense of community and engage the modern workforce.

## PROPERTY HIGHLIGHTS

Situated on the historic and beautiful Mississippi Riverfront, Riverplace's unique design and prime location inspire tenants looking for creative office solutions in a rich, fun, and exciting urban environment. Boasting wonderful on-site restaurants, a conference facility, and a fitness center, Riverplace embraces the new work place and offers employers and employees a one-of-a-kind experience. Walk to neighborhood restaurants and shopping, while enjoying breathtaking views of Minneapolis and the Mississippi River.

### KEY FEATURES

- Newly renovated conference center, tenant lounge, rooftop deck, and plans for a state-of-the-art fitness center
- Dining at Wilde Café & Spirits
- Nearby shopping, entertainment, banks, premier dining, parks and festivals
- On-site parking with electric vehicle charging stations and indoor bicycle storage
- Panoramic views of the Mississippi River

## AVAILABLE FOR LEASE

### ADDRESS

One Main - 1 Main St SE  
Exposition Hall - 43 Main St SE  
East Bridge - 10 NE 2nd St  
Brown Ryan - 15 Main St SE  
Minneapolis, MN 55414

### CAMPUS SIZE (4 BUILDINGS)

3.76 Acres / 249,500 square feet

### ON-SITE

Building management, engineering, building security, and storage facility

### PARKING

On-site parking garage with monthly contracts starting at \$100/stall

# HISTORIC MEETS MODERN



# CONVENIENT AMENITIES



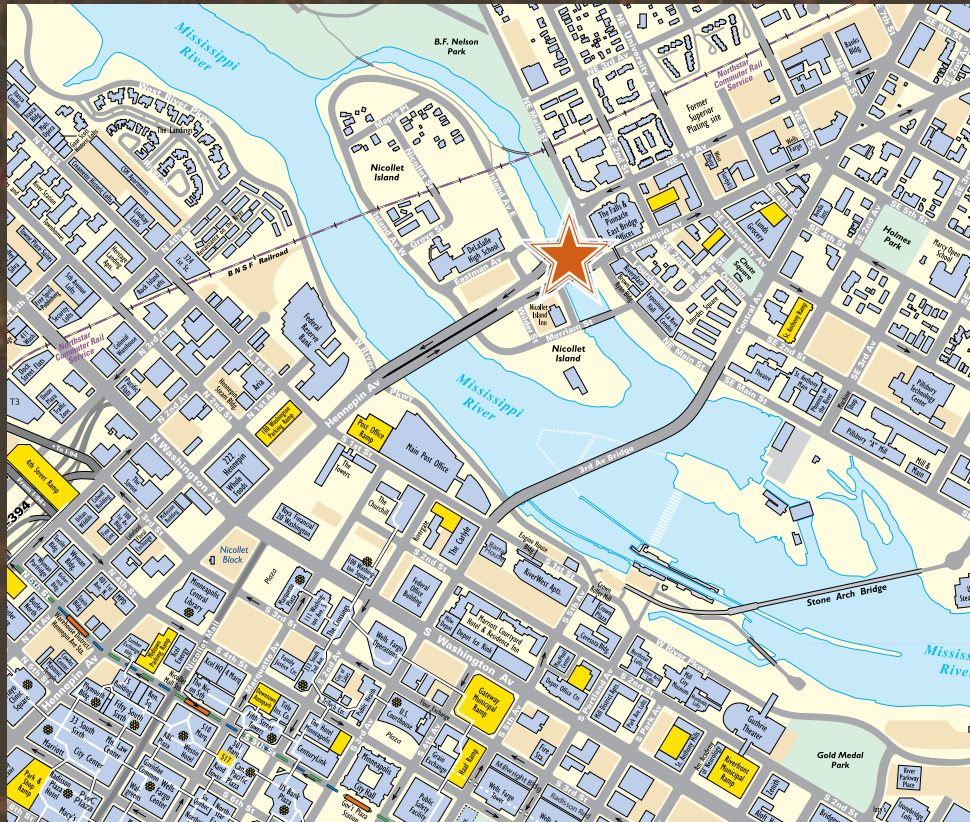
Historic charm and authenticity of Northeast neighborhood



Panoramic views with convenient access to downtown Minneapolis

# PRIME LOCATION





Discover the look and feel of modern character. Embracing the historic traditions of the Northeast neighborhood with updated building renovations perfectly positions Riverplace Offices Northeast to capture the urban vibe that is so attractive to today's workforce.

[riverplaceoffices.com](http://riverplaceoffices.com)

## CONTACT

JIM KENNEY  
952 897 7822  
[jim.kenney@colliers.com](mailto:jim.kenney@colliers.com)

RYAN GEIGER  
952 374 5821  
[ryan.geiger@colliers.com](mailto:ryan.geiger@colliers.com)

Leased by :



COLLIERS INTERNATIONAL  
900 2nd Avenue South, Suite 1575  
Minneapolis, MN 55402  
[colliers.com/msp](http://colliers.com/msp)

Asset Managed by :





# AVAILABLE FOR LEASE

**CAMPUS SIZE (4 BUILDINGS)** 3.76 Acres / 249,500 square feet

**AVAILABLE** Suite sizes from 150 to 18,800 RSF

**LEASE RATES** \$12 - \$18 per rentable square foot

**2019 TAXES & CAM** \$13.00 per rentable square foot

**PARKING** On-site parking garage (contracts starting at \$100/month/stall)

## ONE MAIN

1 Main St SE  
Minneapolis, MN 55414  
72,553 square feet

## BROWN RYAN

15 Main St SE  
Minneapolis, MN 55414  
9,828 square feet

## EAST BRIDGE

10 NE 2nd St  
Minneapolis, MN 55413  
65,372 square feet

## EXPOSITION HALL

43 Main St SE  
Minneapolis, MN 55414  
101,747 square feet

## NEW AND PLANNED IMPROVEMENTS

- New conference center
- Tenant lounge
- Rooftop deck
- New, state-of-the-art fitness center

## BUILDING AND NEIGHBORHOOD AMENITIES

- Dining at Wilde Café & Spirits
- Nearby shopping, entertainment, banks, premier dining, parks and festivals
- On-site parking with electric vehicle charging station
- Indoor bicycle storage
- Panoramic views of the Mississippi River
- On-site building management, engineering, building security and storage facilities

For additional information and availability :

JIM KENNEY  
952 897 7822  
jim.kenney@colliers.com  
[riverplaceoffices.com](http://riverplaceoffices.com)

RYAN GEIGER  
952 374 5821  
ryan.geiger@colliers.com

Leased by : Asset Managed by :

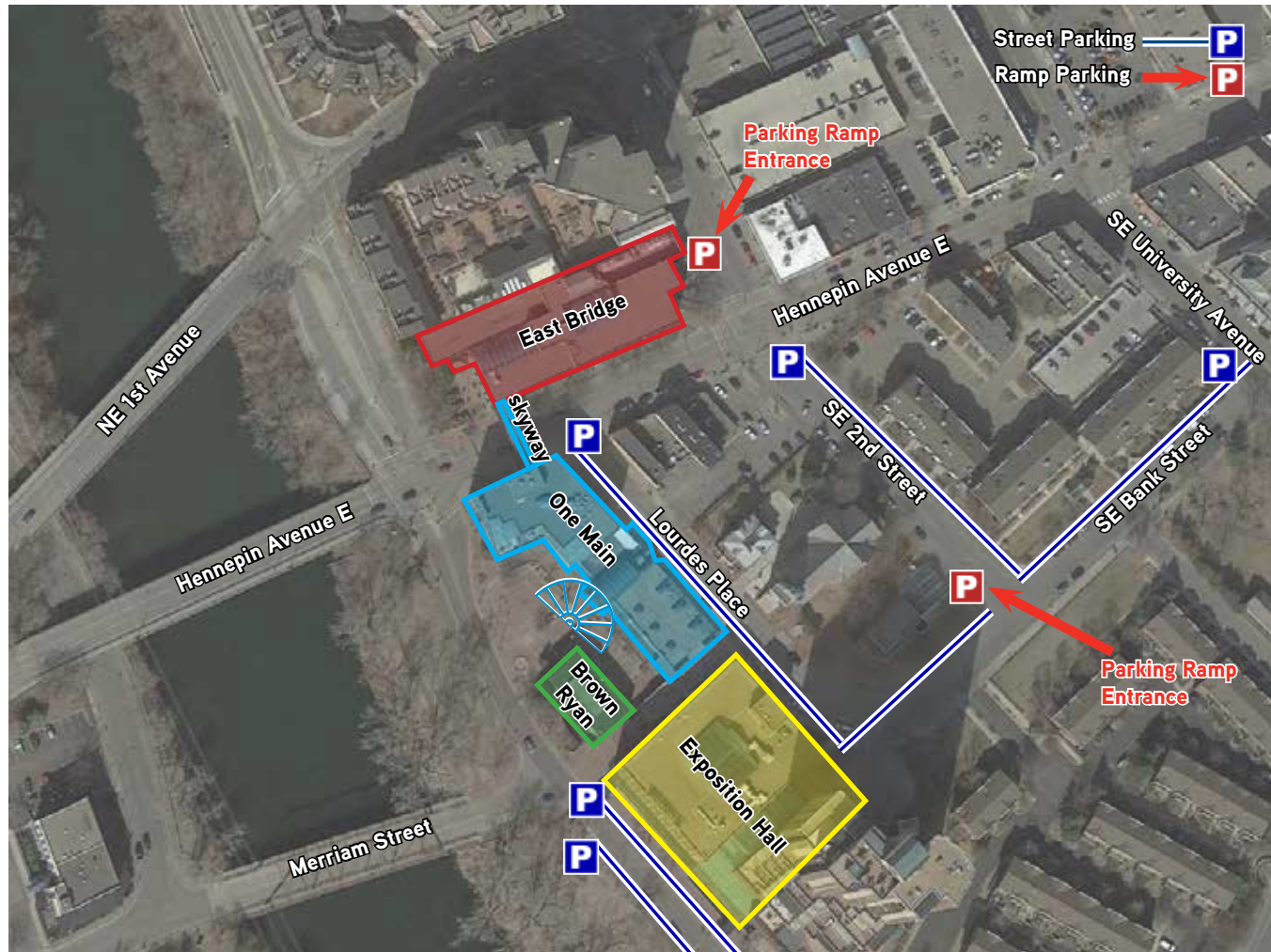




# PARKING AND SITE MAP



[riverplaceoffices.com](http://riverplaceoffices.com)



For additional information and availability:

JIM KENNEY  
952 897 7822  
[jim.kenney@colliers.com](mailto:jim.kenney@colliers.com)

RYAN GEIGER  
952 374 5821  
[ryan.geiger@colliers.com](mailto:ryan.geiger@colliers.com)

Leased by:



COLLIERS INTERNATIONAL  
900 2nd Avenue South, Suite 1575  
Minneapolis, MN 55402  
[www.colliers.com/msp](http://www.colliers.com/msp)

Asset Managed by:





# ACCESSIBILITY



[riverplaceoffices.com](http://riverplaceoffices.com)



For additional information and availability:

JIM KENNEY  
952 897 7822  
[jim.kenney@colliers.com](mailto:jim.kenney@colliers.com)

RYAN GEIGER  
952 374 5821  
[ryan.geiger@colliers.com](mailto:ryan.geiger@colliers.com)

Leased by:



COLLIERS INTERNATIONAL  
900 2nd Avenue South, Suite 1575  
Minneapolis, MN 55402  
[www.colliers.com/msp](http://www.colliers.com/msp)

Asset Managed by:



# TENANT FITNESS CENTER



[riverplaceoffices.com](http://riverplaceoffices.com)



Wide array of weights



Ellipticals and stationary bicycles



Quiet yoga and meditation area



State of the art exercise machines



Spinning



Floor exercise room

For additional information and availability :

JIM KENNEY  
952 897 7822  
[jim.kenney@colliers.com](mailto:jim.kenney@colliers.com)

RYAN GEIGER  
952 374 5821  
[ryan.geiger@colliers.com](mailto:ryan.geiger@colliers.com)

Leased by :



COLLIERS INTERNATIONAL  
900 2nd Avenue South, Suite 1575  
Minneapolis, MN 55402  
[www.colliers.com/msp](http://www.colliers.com/msp)

Asset Managed by :





# TENANT FITNESS CENTER



[riverplaceoffices.com](http://riverplaceoffices.com)



Sink and countertop space for maximum use



Plenty of lockers in both men's and women's locker rooms



Complimentary towels



Spacious shower facilities

For additional information and availability :

JIM KENNEY  
952 897 7822  
[jim.kenney@colliers.com](mailto:jim.kenney@colliers.com)

RYAN GEIGER  
952 374 5821  
[ryan.geiger@colliers.com](mailto:ryan.geiger@colliers.com)

Leased by :



COLLIERS INTERNATIONAL  
900 2nd Avenue South, Suite 1575  
Minneapolis, MN 55402  
[www.colliers.com/msp](http://www.colliers.com/msp)

Asset Managed by :





# ACCESS TO NEWLY RENOVATED CAMPUS AMENITIES



[riverplaceoffices.com](http://riverplaceoffices.com)



Collaborative work areas with abundant natural light



Spacious conference and training rooms



Upgraded tenant lounge with fireplace



Newly renovated rooftop deck with city views

For additional information and availability:

JIM KENNEY  
952 897 7822  
[jim.kenney@colliers.com](mailto:jim.kenney@colliers.com)

RYAN GEIGER  
952 374 5821  
[ryan.geiger@colliers.com](mailto:ryan.geiger@colliers.com)

Leased by:



COLLIERS INTERNATIONAL  
900 2nd Avenue South, Suite 1575  
Minneapolis, MN 55402  
[www.colliers.com/msp](http://www.colliers.com/msp)

Asset Managed by:

