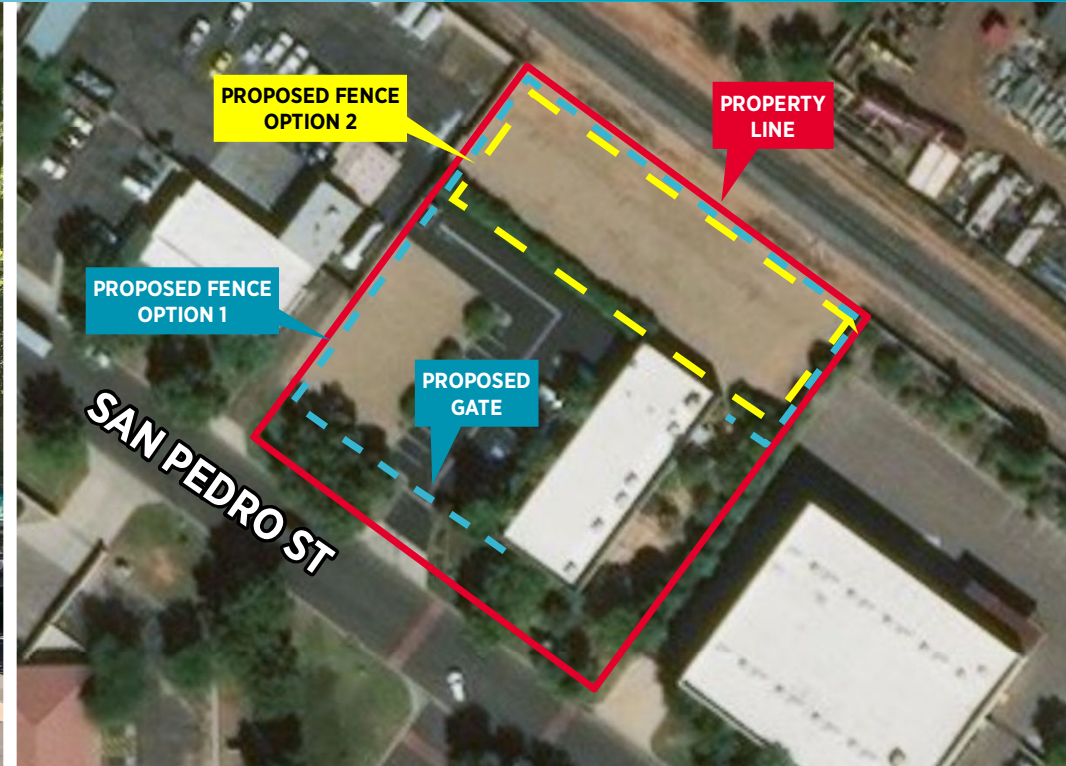


1340 WEST SAN PEDRO STREET

Gilbert, Arizona 85233



±6,500 SF FOR LEASE



Property Highlights

- ±6,500 SF Building on ±1.27 Acres
- Office area: footprint of ±3,000 SF
- Built in 1996
- Air-conditioned warehouse
- 1 Grade level loading door
- ±10' clear height in warehouse
- Power: 600 amps 120-208V
- Excess land for expansion or large fenced yard/two concepts
- 1 mile to full diamond interchange at Mesa Drive and US 60
- Zoning: LI (Light Industrial), Town of Gilbert
- Located in Fiesta Ranch
- Proposed yards - full site or ±10,000 SF

For more information, please contact:

Pete Klees
Senior Director
+1 602 224 4415
pete.klees@cushwake.com

Rick Danis
Executive Director
+1 602 224 4405
rick.danis@cushwake.com

2555 E. Camelback Rd, Suite 400
Phoenix, Arizona 85016
ph: +1 602 954 9000
fx: +1 602 253 0528

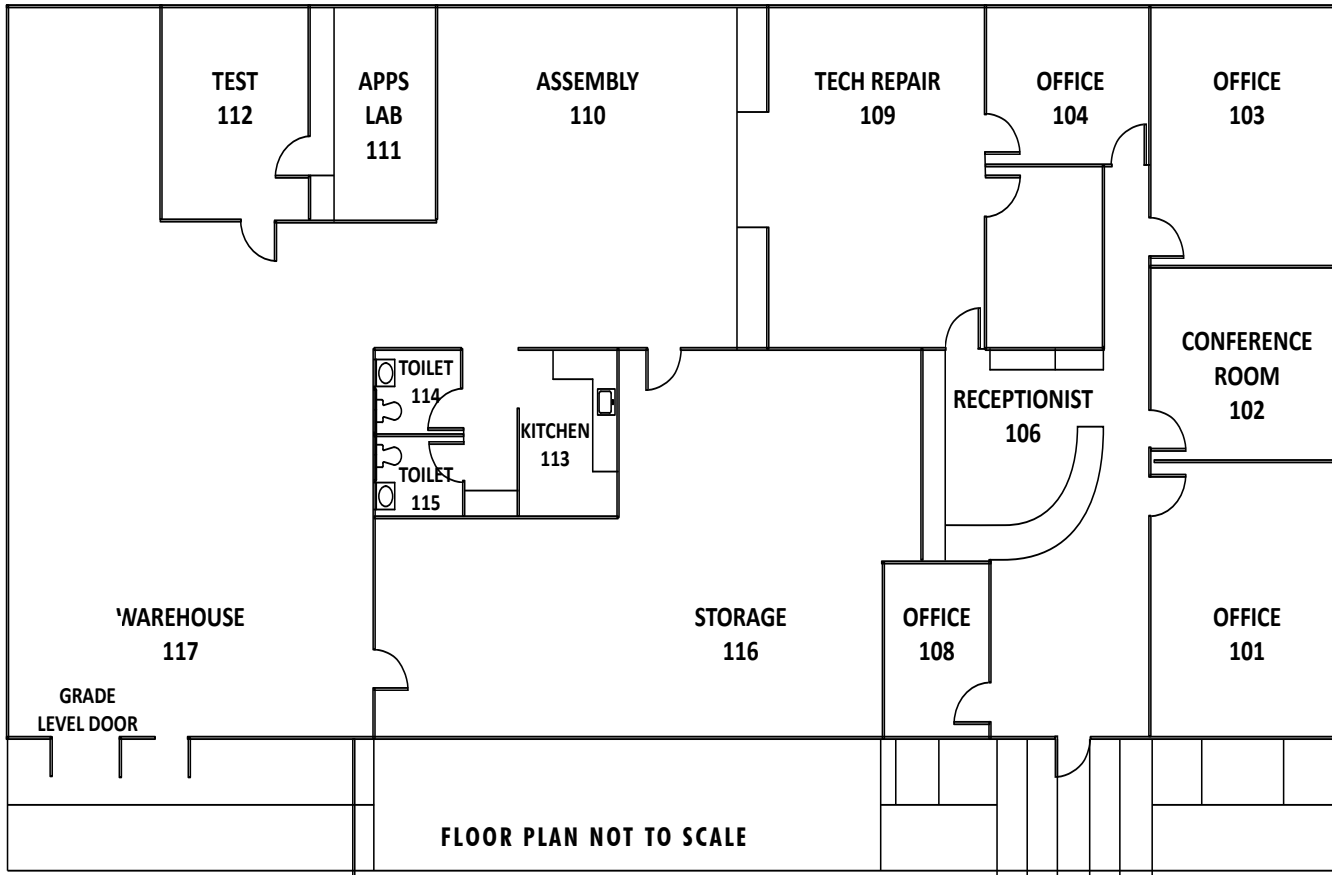
cushmanwakefield.com

1340 WEST SAN PEDRO STREET

Gilbert, Arizona 85233



Floor Plan



For more information, please contact:

Pete Klees
Senior Director
+1 602 224 4415
pete.klees@cushwake.com

Rick Danis
Executive Director
+1 602 224 4405
rick.danis@cushwake.com

2555 E. Camelback Rd, Suite 400
Phoenix, Arizona 85016
ph: +1 602 954 9000
fx: +1 602 253 0528

cushmanwakefield.com