



**CUSHMAN &  
WAKEFIELD**

FOR LEASE

**12577 South 265 West, #5A**  
Draper, Utah



**A desirable mid-size multi-tenant park.  
Ample parking with easy I-15 freeway access at 12300 South**

### Property Highlights

- 17,535 SF available
- 5,100 SF stacked office
- \$0.65 PSF, NNN lease rate
- (1) 10'x12' dock high door
- (3) 12' x 14' ground level doors
- 21' clear height
- 400 amps, 208 volt, 3-phase power
- Skylights
- Available May 1, 2019

**Travis Healey, SIOR**  
Senior Director  
+1 801 303 5565  
travis.healey@cushwake.com

**Tom Freeman, SIOR**  
Executive Director  
+1 801 303 5449  
tom.freeman@cushwake.com

170 South Main Street Suite 1600  
Salt Lake City, UT 84101  
Main +1 801 322 2000  
Fax +1 801 322 2040  
**cushmanwakefield.com**

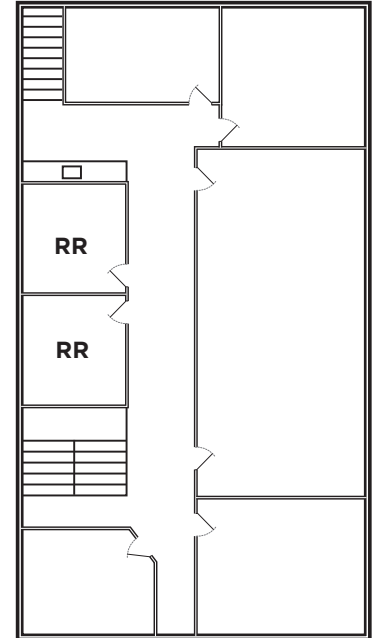
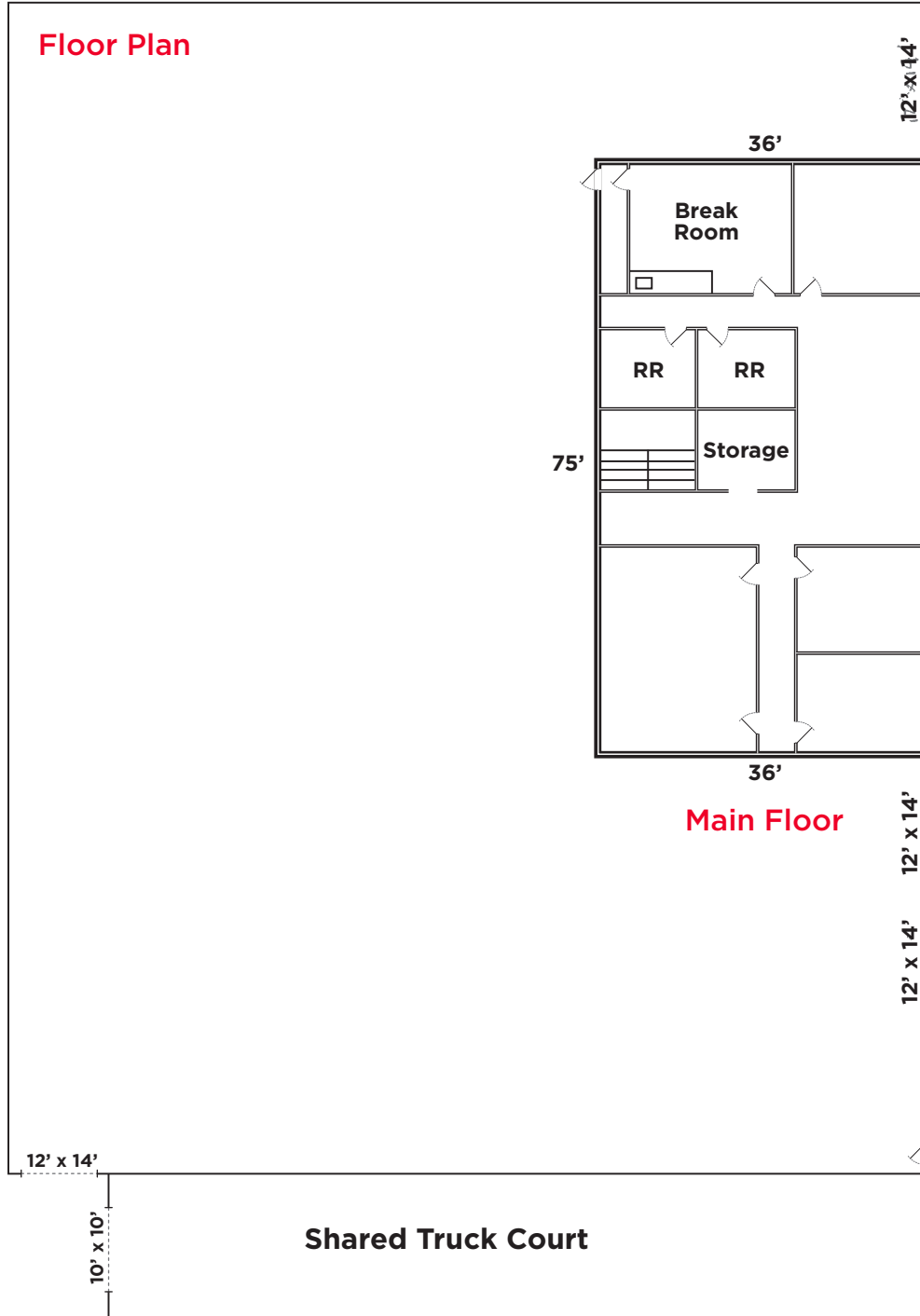


**CUSHMAN &  
WAKEFIELD**

FOR LEASE

**12577 South 265 West, #5A**  
Draper, Utah

**Floor Plan**



**Travis Healey, SIOR**  
Senior Director  
+1 801 303 5565  
travis.healey@cushwake.com

**Tom Freeman, SIOR**  
Executive Director  
+1 801 303 5449  
tom.freeman@cushwake.com

170 South Main Street Suite 1600  
Salt Lake City, UT 84101  
Main +1 801 322 2000  
Fax +1 801 322 2040  
**cushmanwakefield.com**