

**FOR
LEASE**

SMALL BAY OFFICE SPACE

5001-5027 S. HW 17-92

CASSELBERRY, FL 32707



CONTACT

Vincent F. Wolle, CCIM, SIOR
407.448.1823 *mobile*
CREManager@Gmail.com

Results Real Estate Partners, LLC

Licensed Commercial Real Estate Brokers
108 Commerce Street, Suite 200
Lake Mary, Florida 32746

407.647.0200 *main*
407.647.0205 *fax*

www.ResultsREPartners.com

PROPERTY HIGHLIGHTS

- (4) Suite ranging from 1,209 SF to 1,915 SF
 - Suite 5021: 1,915 SF
 - Suite 5023: 1,452 SF
 - Suite 5025: 1,350 SF
 - Suite 5027: 1,209 SF
- Alarmed Security System and High Speed Internet Access
- 2 bathrooms in each suite with separate utilities
- New HVAC units for each unit
- Ample Parking with Pylon Signage for the Tenants
- Located off HW 17-92, Close to 436, SR 434, Red Bug Road, Dog Track Rd, and Maitland Blvd
- Owner may amortize improvements for a long term tenant

Lease Rate: \$10.00 Modified Gross

This information is from sources we deem reliable and is subject to prior sale, lease, withdrawal without notice, or change in prices, rates, or conditions. No representation is made as to the accuracy of any information furnished.

**FOR
LEASE**

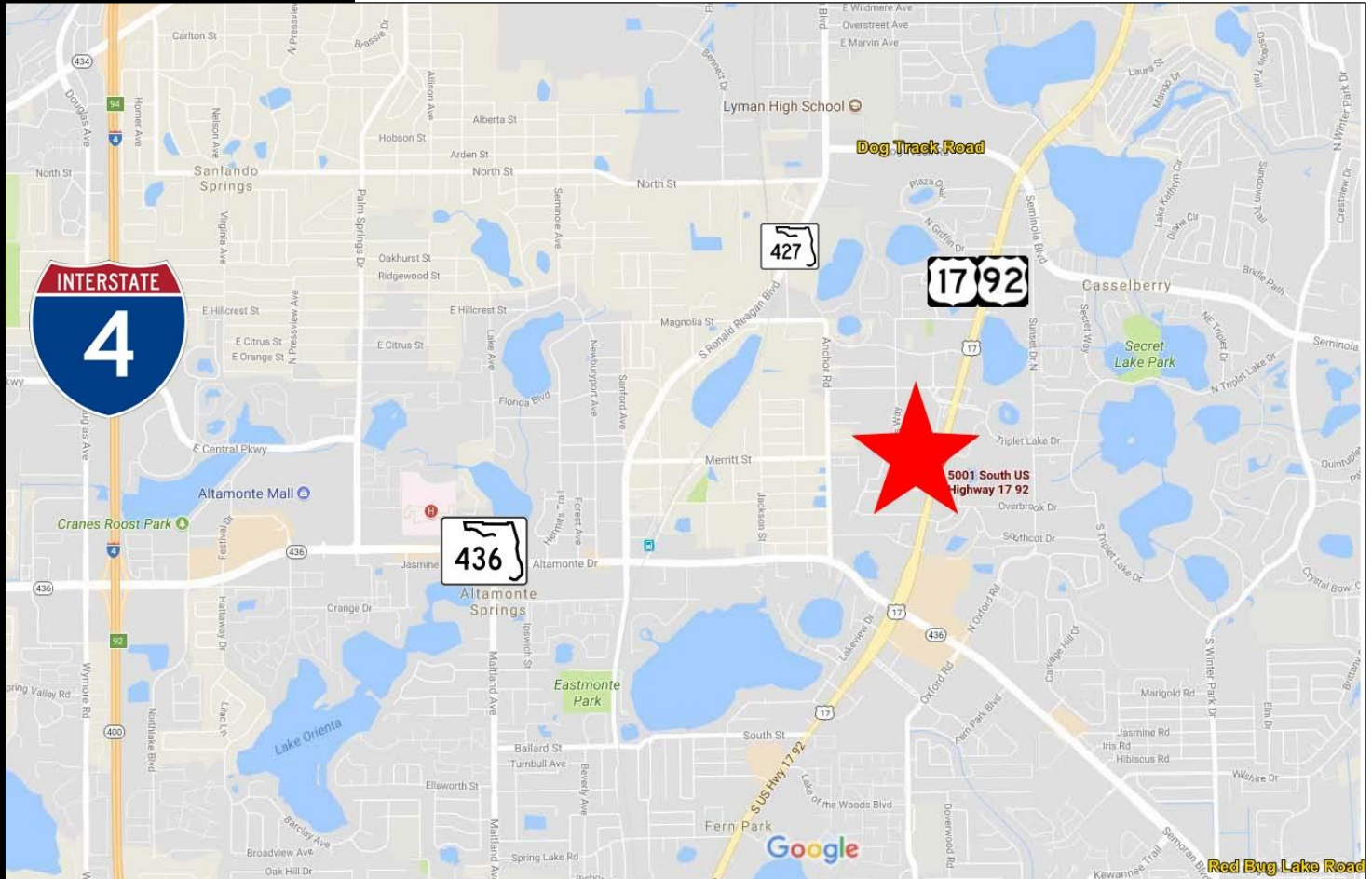
SMALL BAY OFFICE SPACE

5001-5027 S. HW 17-92

CASSELBERRY, FL 32707



RESULTS
REAL ESTATE PARTNERS, LLC



CONTACT

Vincent F. Wolle, CCIM, SIOR
407.448.1823 *mobile*
CREManager@Gmail.com

Results Real Estate Partners, LLC
Licensed Commercial Real Estate Brokers
108 Commerce Street, Suite 200
Lake Mary, Florida 32746

407.647.0200 *main*
407.647.0205 *fax*

www.ResultsREPartners.com



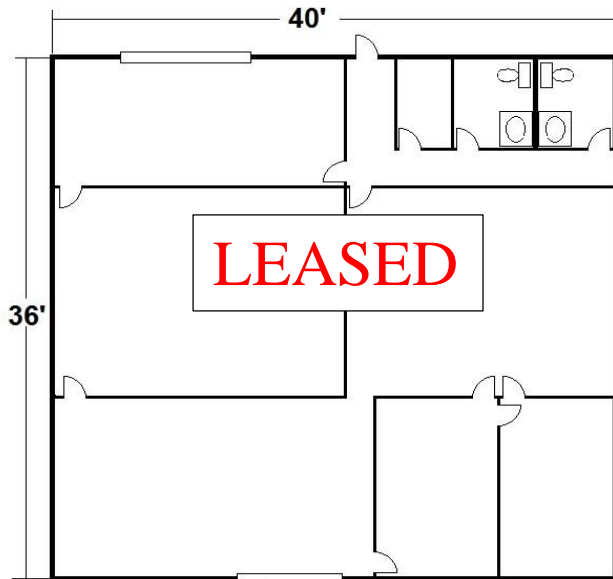
This information is from sources we deem reliable and is subject to prior sale, lease, withdrawal without notice, or change in prices, rates, or conditions. No representation is made as to the accuracy of any information furnished.

**FOR
LEASE**

SMALL BAY OFFICE SPACE

5001-5027 S. HW 17-92

CASSELBERRY, FL 32707

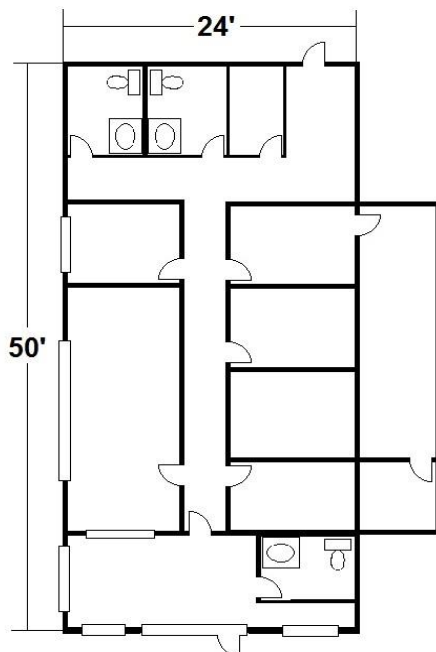


Suite 5001
1440 SF

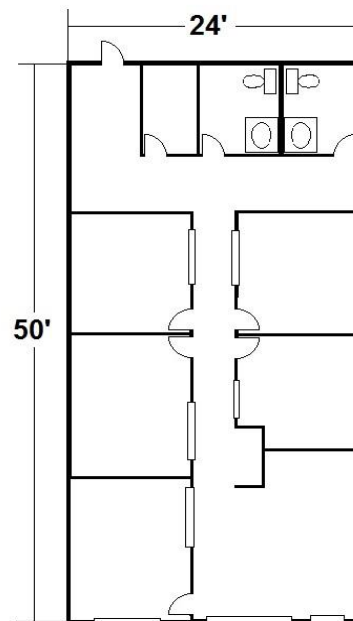


Suite 5021
1915 SF

NOT TO SCALE



Suite 5023
1,452 SF



Suite 5027
1,209 SF

CONTACT

Vincent F. Wolle, CCIM, SIOR
407.448.1823 *mobile*
CREManager@Gmail.com

This information is from sources we deem reliable and is subject to prior sale, lease, withdrawal without notice, or change in prices, rates, or conditions. No representation is made as to the accuracy of any information furnished.