

Foremost Property

2413 Pacific Avenue
Tacoma, WA

Newly renovated building

Generous TI package

Highly visible corner location
near LeMay Car Museum,
Tacoma Dome and UWT

On Light Rail route

Retail or office use

±4,457 SF, can be demised

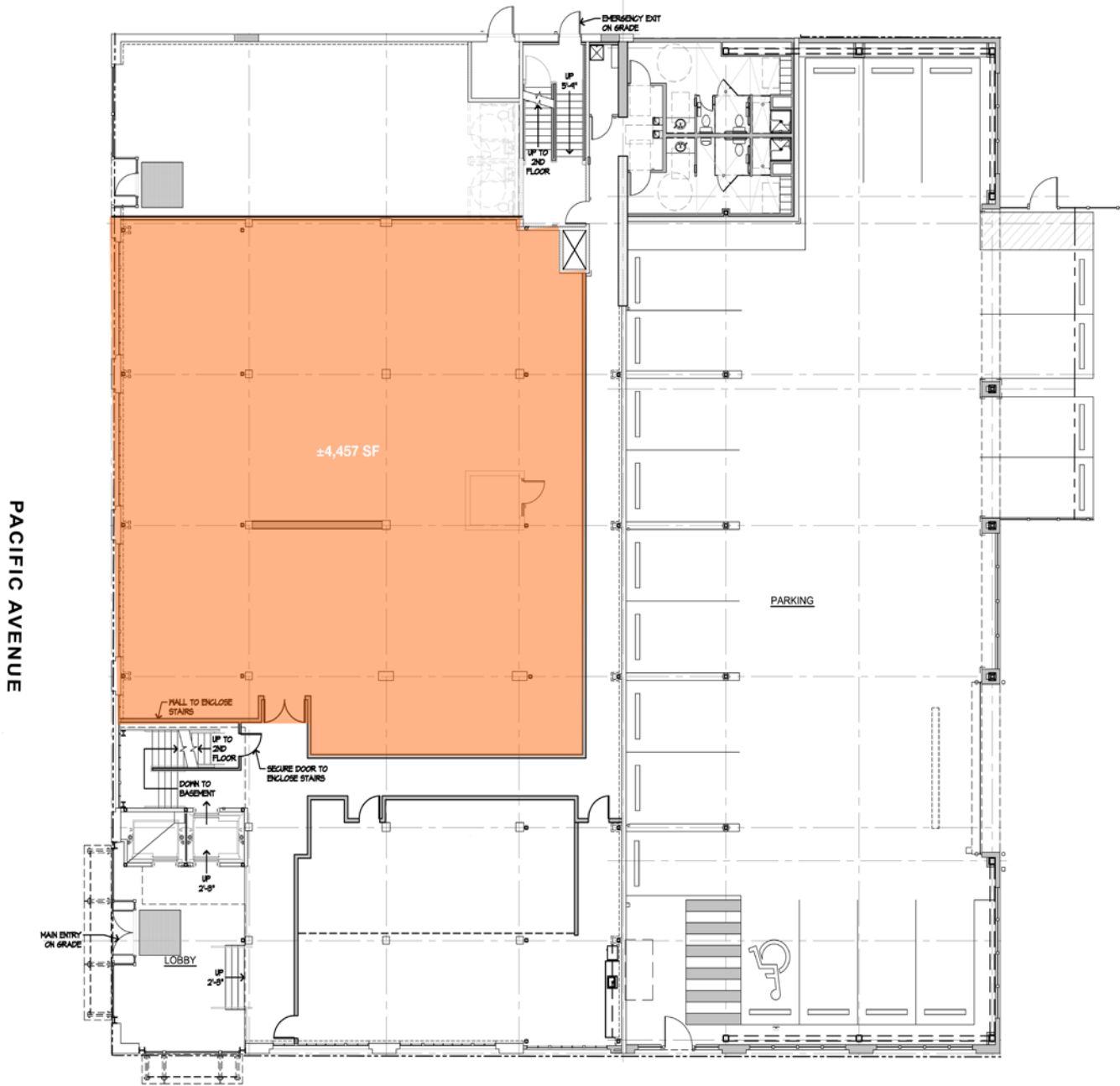
Convenient access to I-5



Contact

Laura Fox, CCIM
253.722.1441
lfox@kiddermathews.com

Foremost Property



Contact

Laura Fox, CCIM
253.722.1441
lfox@kiddermathews.com