

Six@Park - Office and Retail Space Available

105 East 6th Street

Parkville, MO 64152

Under Construction with January 2020 Delivery Date



FOUTCH
Architecture • Management • Construction



W

W A T E R F O R D

PROPERTY COMPANY, LLC

Six@Park

Features



- Office and retail space available.
- No E-Tax.
- Amenities include a Rooftop Terrace, Fitness Facility and Conference / Training Rooms.
- 925 square feet to 24,000 square feet available.
- \$24.50 to \$28.50 full service.
- Up the hill from Downtown Parkville—USA Today named Parkville the “Most Charming Main Street” in the State of Missouri.
- Only in Your State named Parkville “the coolest space in the Midwest.”
- Free parking.
- Excellent restaurants and coffee shops.
- Less than 10 minutes from Downtown Kansas City.



WATERFORD
PROPERTY COMPANY LLC

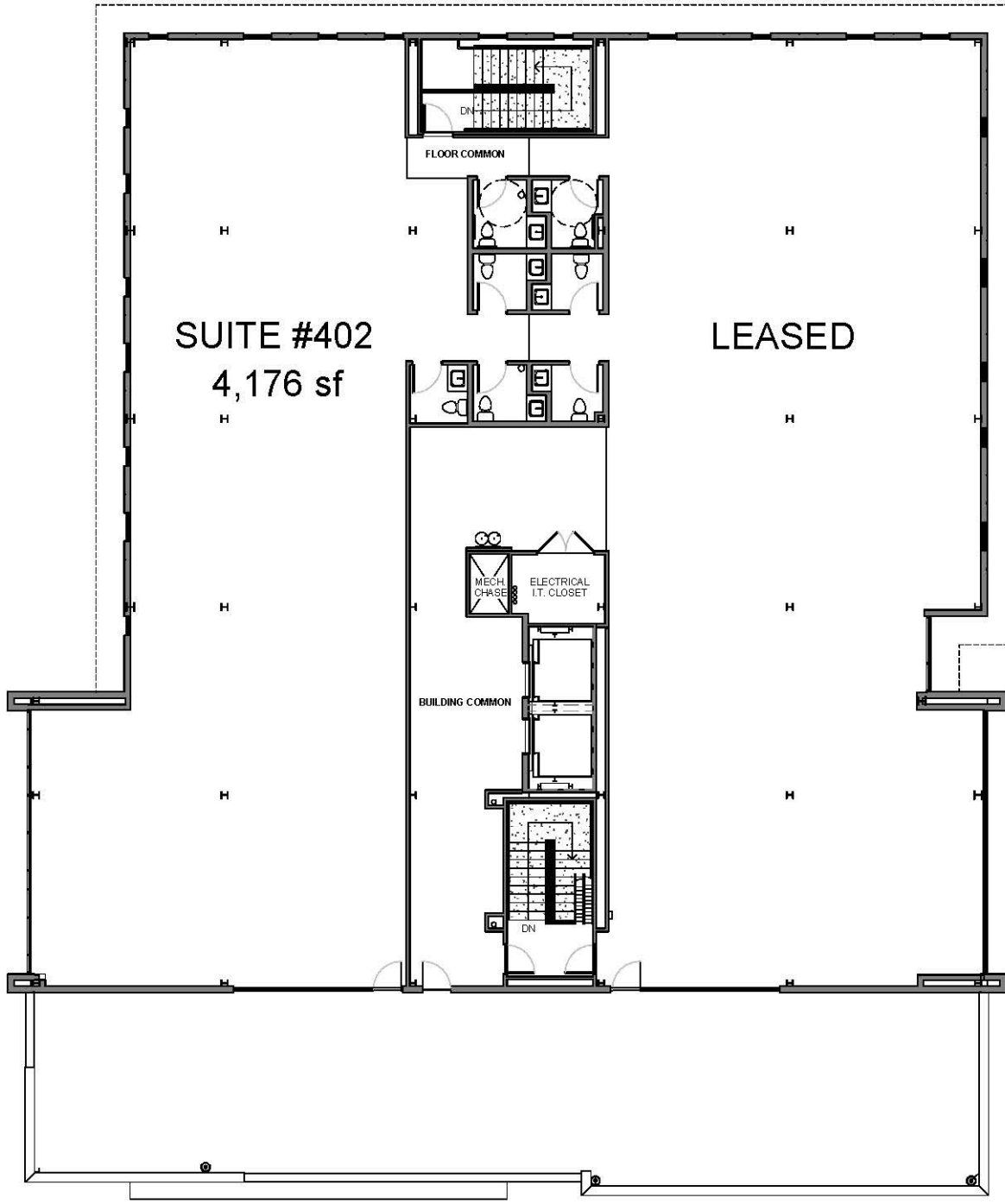
Chuck Connealy, SIOR, CCIM

Direct: (913) 789-9020

Cell: (913) 515-6616

chuck.connealy@waterfordproperty.net

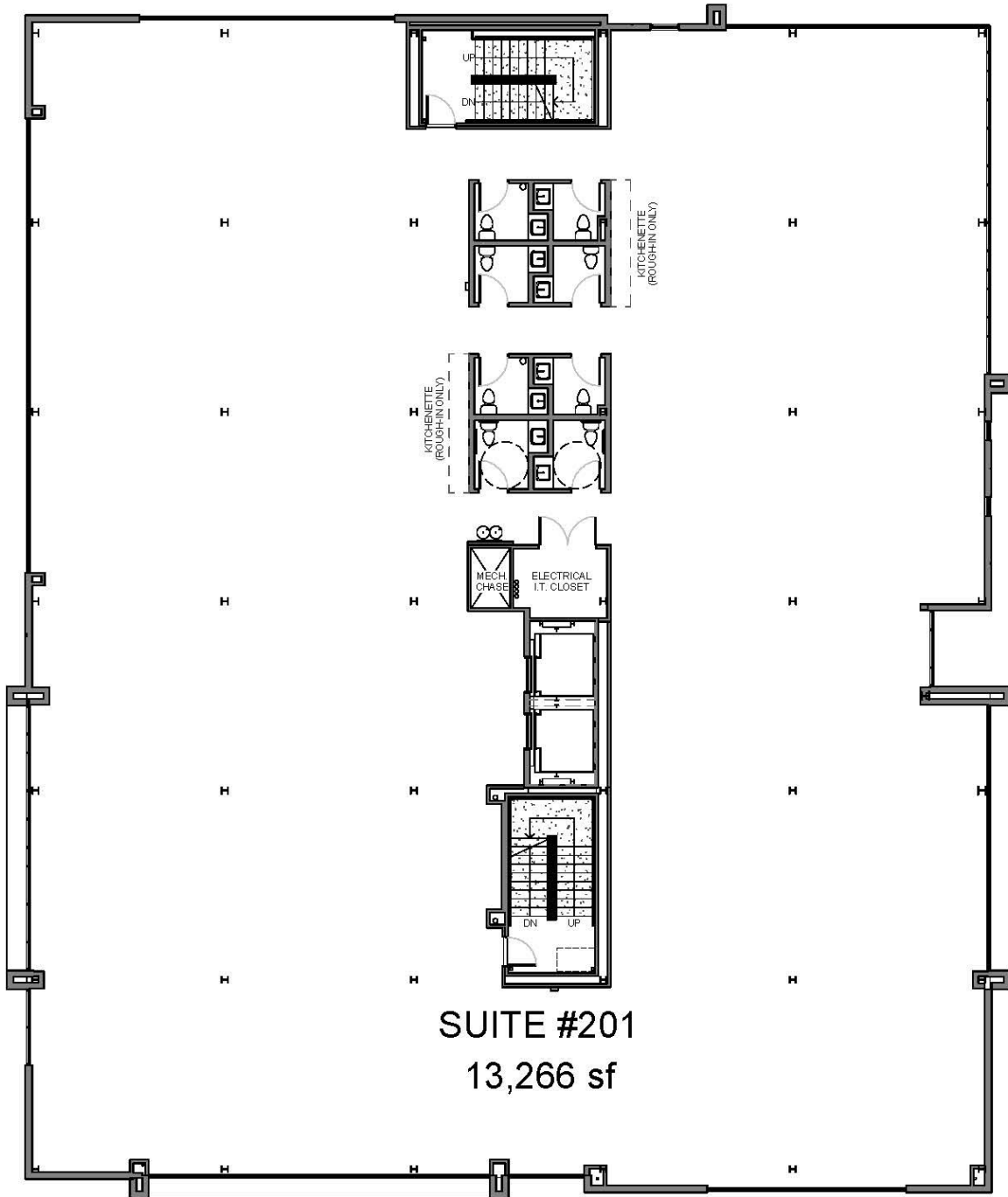
4th Floor



Six@Park

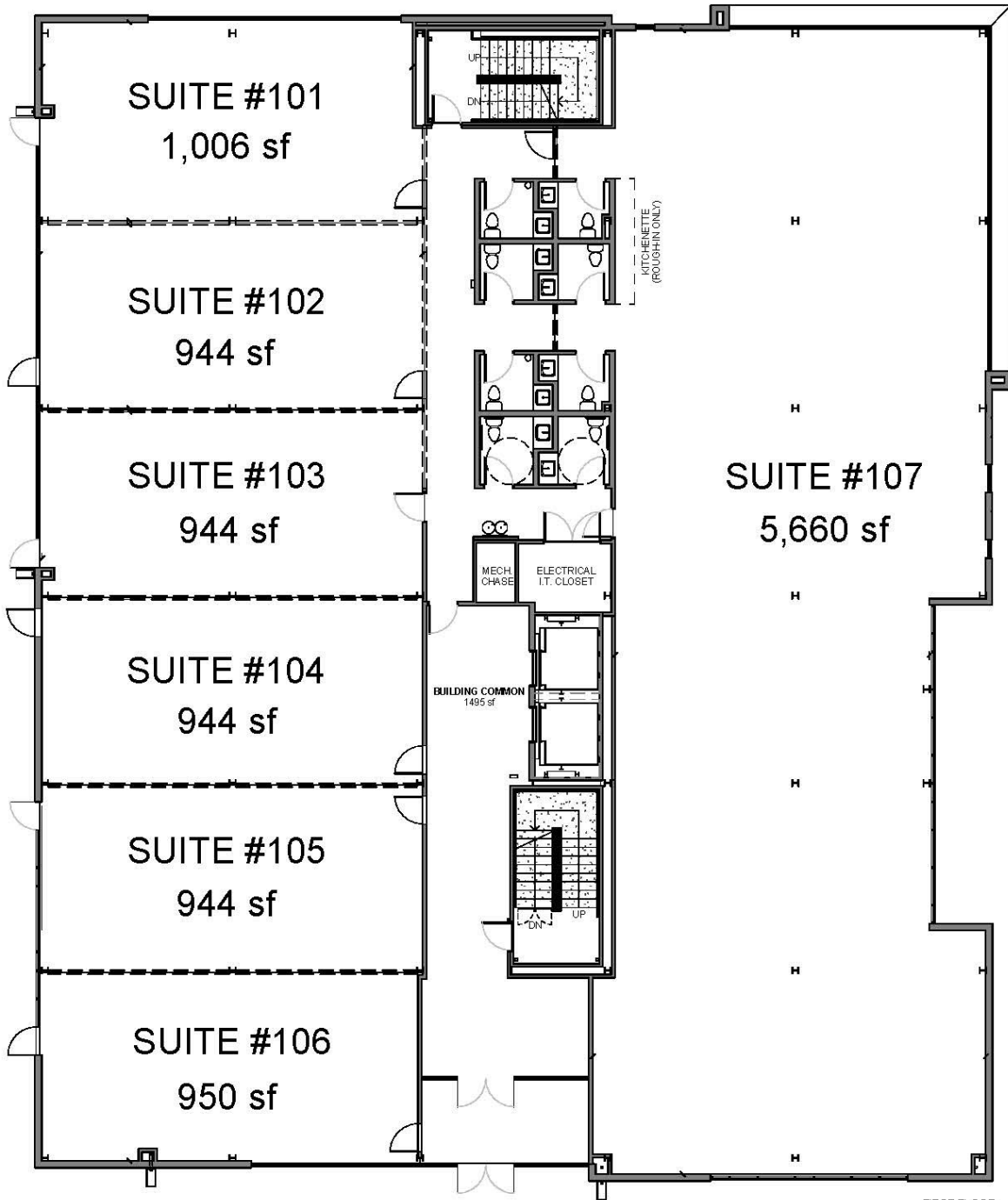
Available Space

2nd Floor



SECOND FLOOR

1st Floor

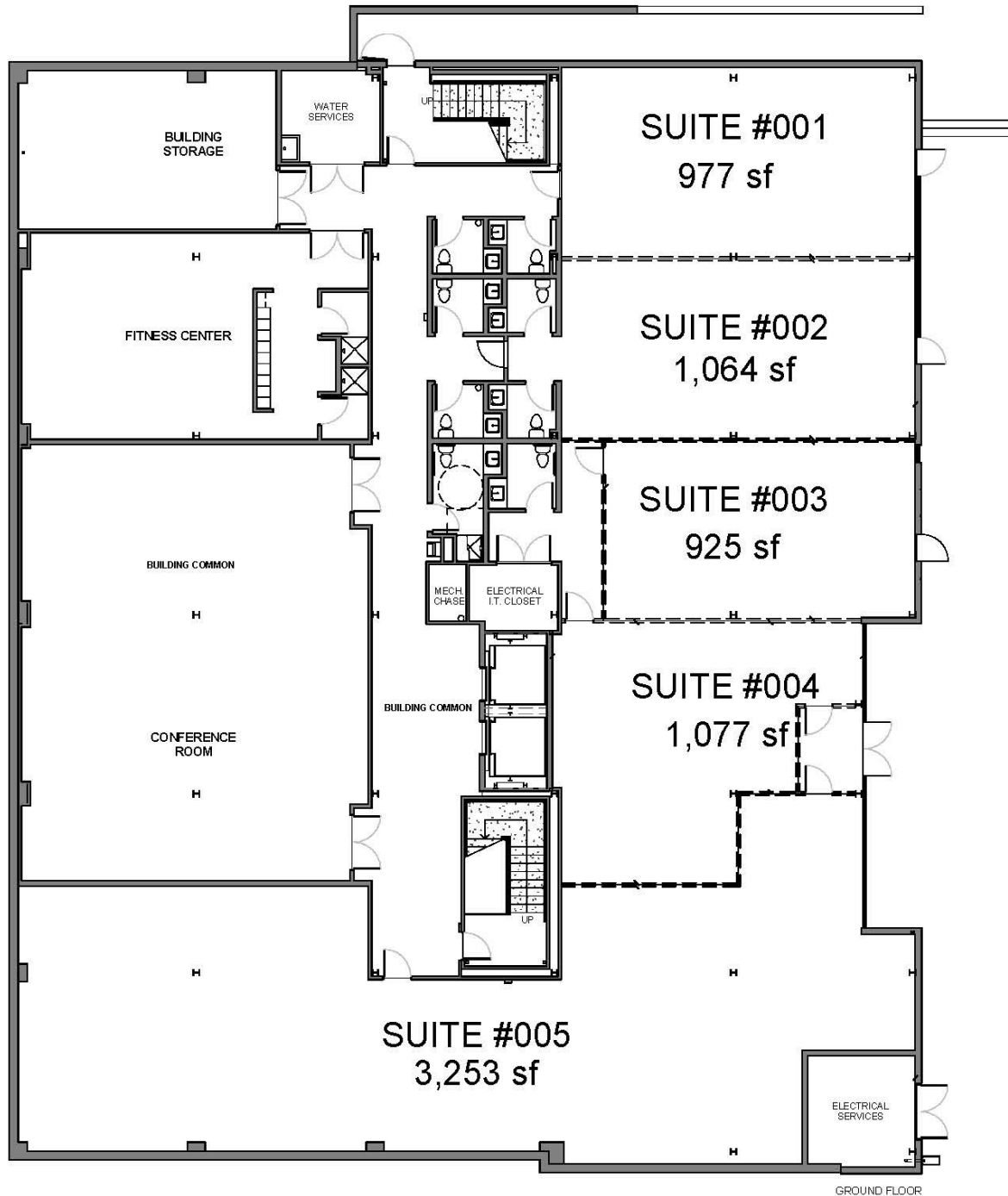


FIRST FLOOR

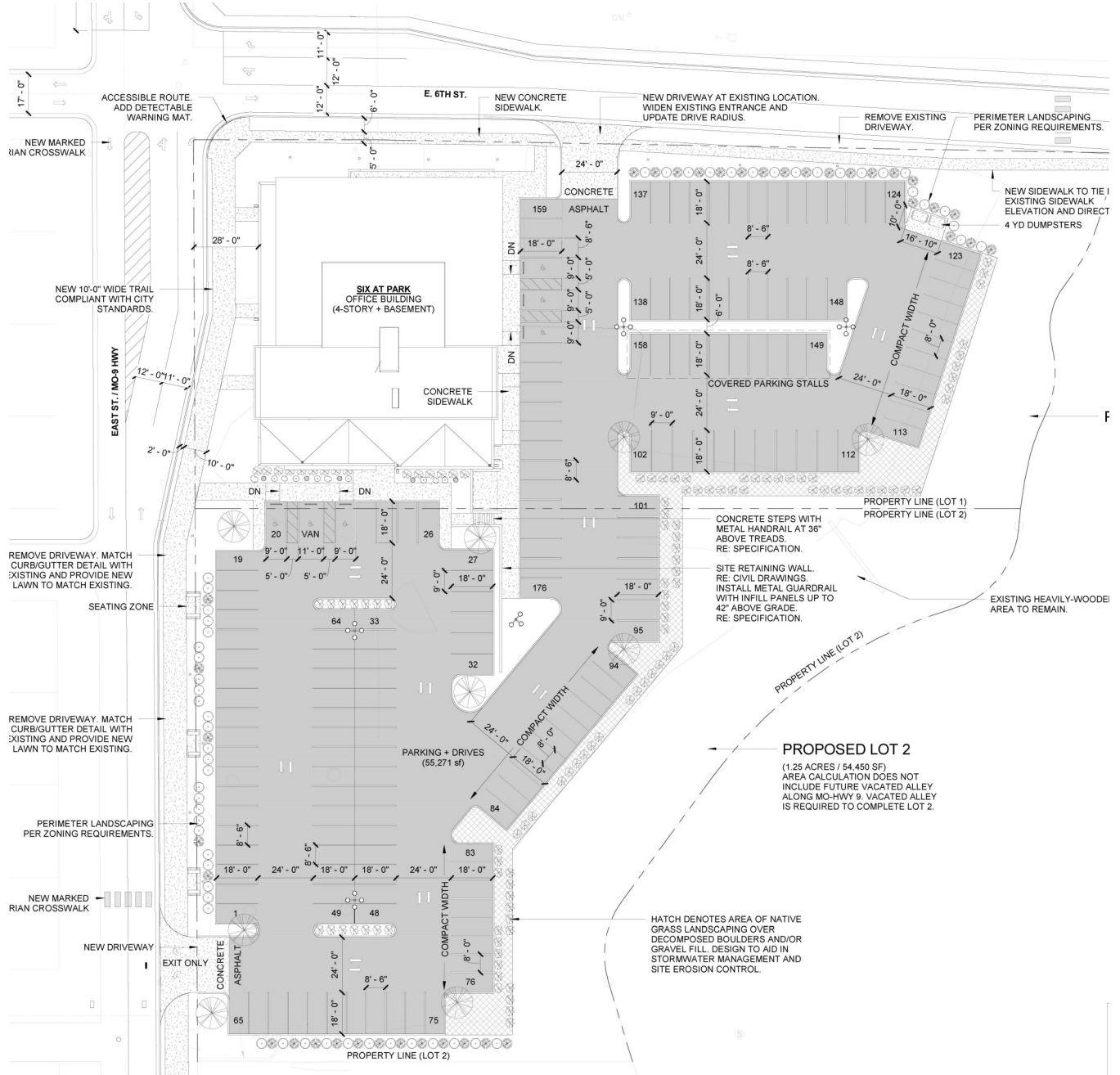
Six@Park

Available Space

Ground Level

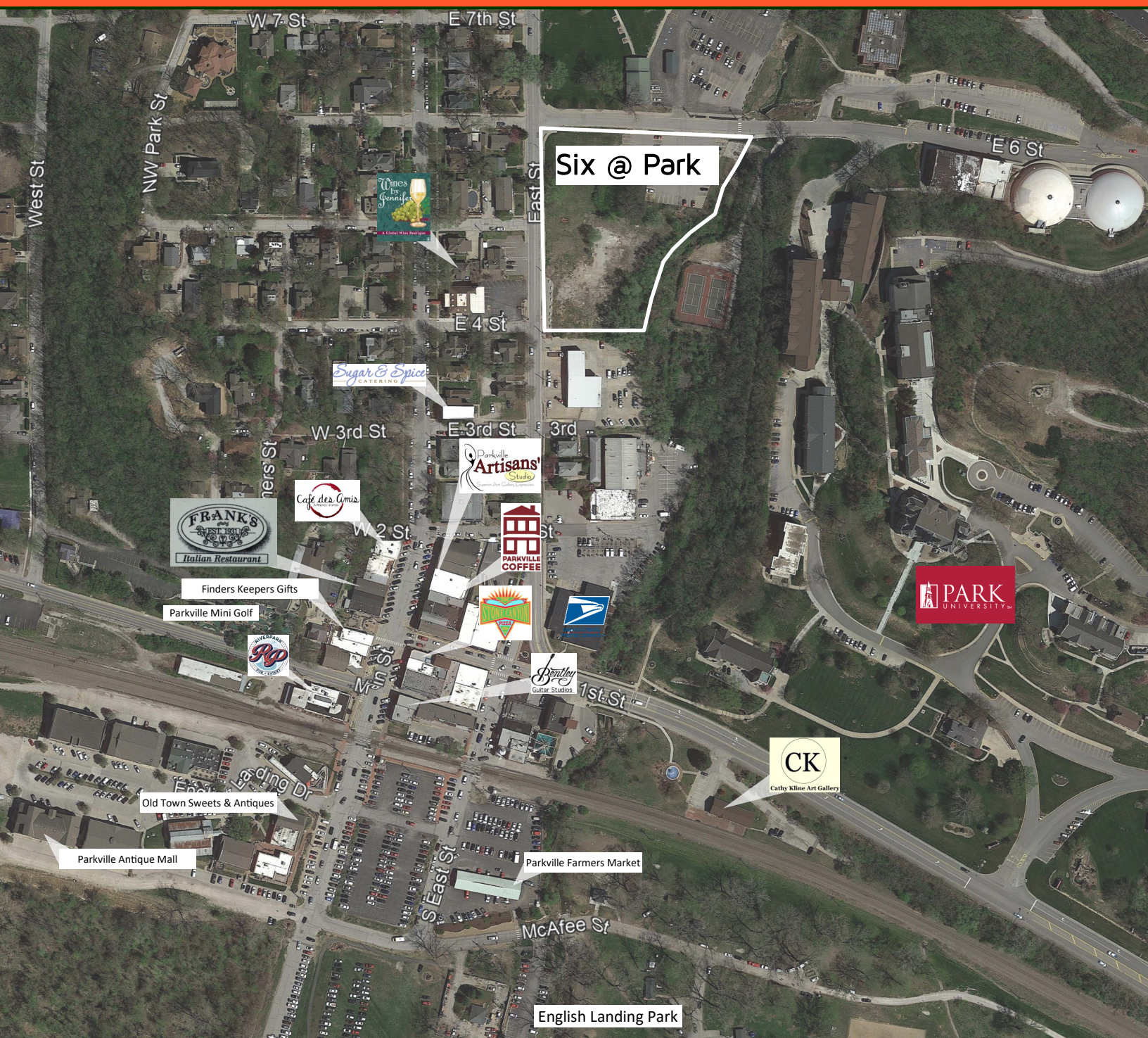


Site Plan



Six@Park

Area Amenities



WATERFORD
PROPERTY COMPANY LLC

Chuck Connealy, SIOR, CCIM

Direct: (913) 789-9020

Cell: (913) 515-6616

chuck.connealy@waterfordproperty.net

Information furnished regarding property is from sources deemed reliable but no warranty or representation is made as to the accuracy thereof and same is submitted subject to errors, omissions, prior sale or lease or withdrawal, without notice.