

**FOR LEASE**

7030 Pacific Avenue  
Tacoma, WA 98408

**Fred Meyer**

S 72ND STREET 20,000 CPD

LEASED

AVAILABLE

LEASE PENDING

metroPCS  
Teriyaki  
K Nails  
Space Vapor

PACIFIC AVE 24,000 CPD

McDonald's



**J & C PLAZA**

Kyle Prosser

First Western Properties—Tacoma Inc. | 253.472.0404  
6402 Tacoma Mall Blvd, Tacoma, WA 98409 | fwp-inc.com



**J & C PLAZA** is located on a high traffic corner along 72nd Street and Pacific Avenue. The plaza provides ample on site parking and pylon signage opportunities for even more visibility. Move-in ready spaces and pad sites available to join this busy intersection that is home to national neighboring tenants.

**RETAIL:**

1,900 SF \$22.00 PSF PLUS NNN



**NEARBY TENANTS**



Population



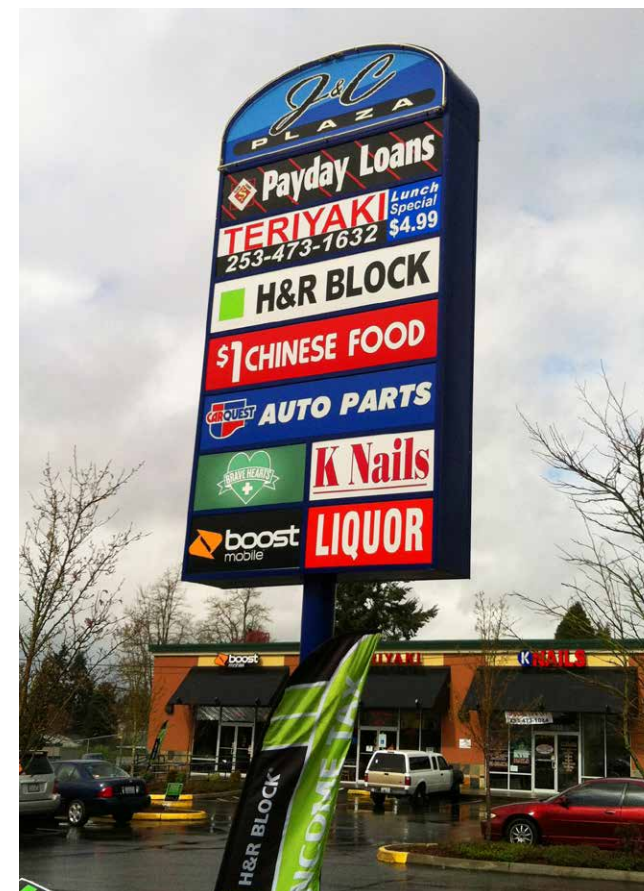
Average HH Income



Daytime Population

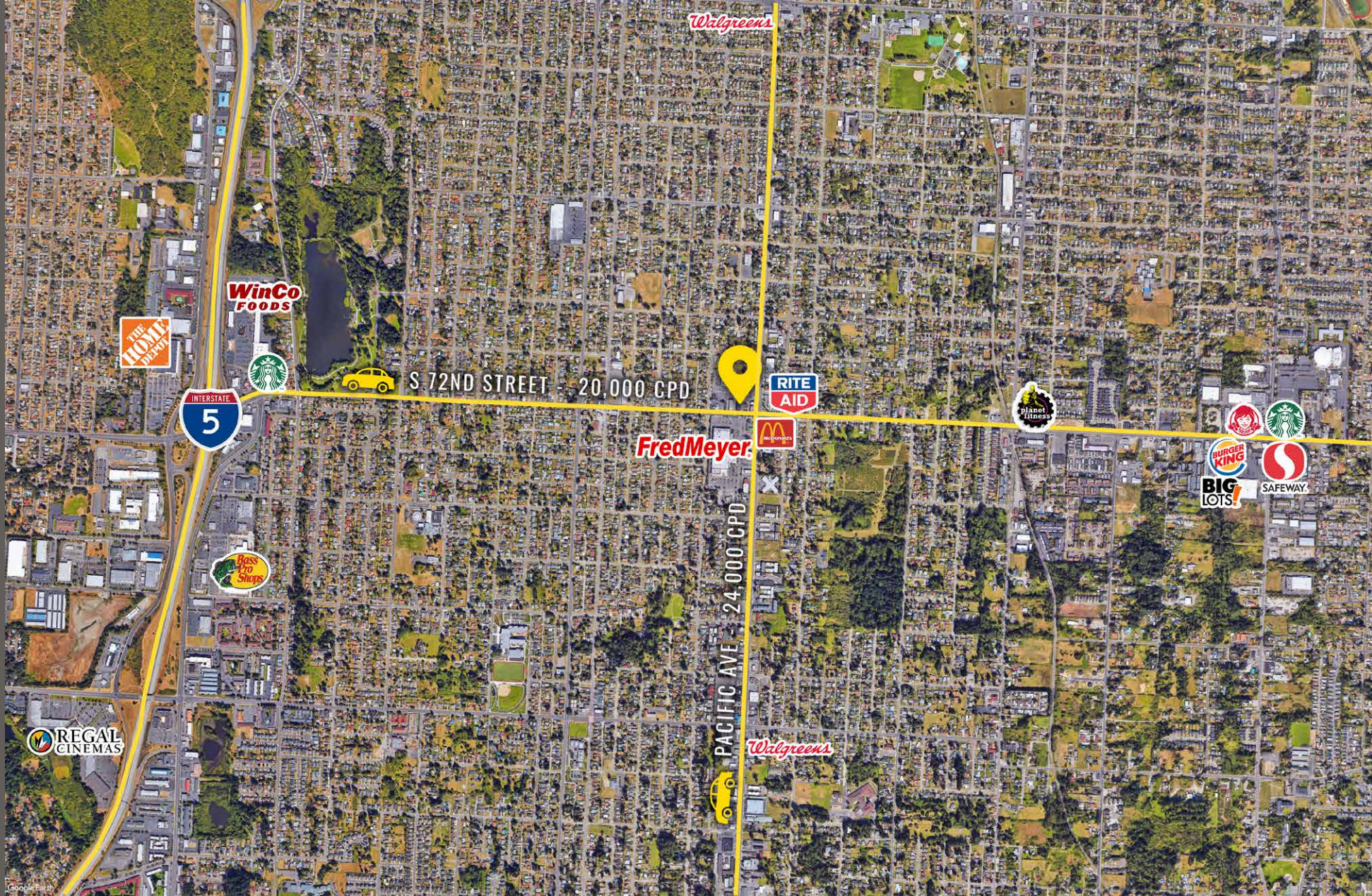
Regis - 2018

	Population	Average HH Income	Daytime Population
Mile 1	18,734	\$70,485	8,497
Mile 3	126,735	\$64,412	83,625
Mile 5	266,131	\$70,370	234,909





LOCATION DETAILS



Located moments from Interstate 5



Located in the 72nd Street Retail Core



20,000 CPD S 72nd Street



24,000 CPD Pacific Avenue



TACOMA | KIRKLAND | PORTLAND | SEATTLE



**RETAIL FOCUSED. RESULTS DRIVEN.**

**KYLE PROSSER**  
253.284.3633  
kyle@firstwesternproperties.com



First Western Properties—Tacoma Inc. | 253.472.0404  
6402 Tacoma Mall Blvd, Tacoma, WA 98409 | fwp-inc.com

© First Western Properties, Inc. DISCLAIMER: The above information has been secured from sources believed to be reliable, however, no representations are made to its accuracy. Prospective tenants or buyers should consult their professional advisors and conduct their own independent investigation. Properties are subject to change in price and/or availability without notice.