

## BELOIT HOTEL BUILDING

\$5.00 - 6.00 SF/yr (NNN)

444 E Grand Ave  
Beloit, WI 53511

AVAILABLE SPACE  
1,027 - 10,011 SF

### AREA

Located in the heart of downtown Beloit next to the Phoenix Building and across from BMO Harris Bank.



©2019 Coldwell Banker Real Estate LLC, dba Coldwell Banker Commercial McGuire Mears & Associates. All rights reserved. Coldwell Banker Commercial® and the Coldwell Banker Commercial logo are registered service marks owned by Coldwell Banker Real Estate LLC. Coldwell Banker Real Estate LLC, dba Coldwell Banker Commercial Affiliates fully supports the principles of the Fair Housing Act and the Equal Opportunity Act. Each office is independently owned and operated. The information provided is deemed reliable, but it is not guaranteed to be accurate or complete, and it should not be relied upon as such. This information should be independently verified before any person enters into a transaction based upon it.

# FOR LEASE

MCGUIREMEARS.COM

### RETAIL / OFFICE

Mandy Witt  
608.314.8252  
mandy@mcguiremears.com

COLDWELL BANKER COMMERCIAL  
MCGUIRE MEARS & ASSOCIATES  
400 Midland Ct Ste 101, Janesville, WI 53546  
608.752.6325



# BELOIT HOTEL BUILDING

444 E Grand Ave, Beloit, WI 53511

LEASE



## OFFERING SUMMARY

Available SF:	1,027 - 10,011 SF
Lease Rate:	\$5.00 - 6.00 SF/yr (NNN)
Lot Size:	0.29 Acres
Year Built:	1904
Building Size:	32,433 SF
Renovated:	2001
Zoning:	CBD-1

## PROPERTY OVERVIEW

Former Barnes & Noble Beloit College Bookstore retail or office space for lease in downtown Beloit, Wisconsin. The three-story brick Neo-Classical Revival building was originally constructed in 1904 as the Hilton House Hotel and was renovated into upper-floor apartments and first-floor retail space in 2001. The basement level has 4,000 SF available and the first floor has 10,011 SF available (divisible to 1,027 SF). Property is serviced by an elevator and has a small courtyard for tenant use. Located on the National Register of Historic Places.

## AVAILABLE SPACES

SPACE	LEASE RATE	SIZE (SF)
1st Floor	\$6.00 SF/yr	1,027 - 10,011 SF
Lower Level	\$5.00 SF/yr	4,000 SF

MCGUIREMEARS.COM

Mandy Witt  
608.314.8252  
mandy@mcguiremeares.com





# BELOIT HOTEL BUILDING

444 E Grand Ave, Beloit, WI 53511

LEASE



[MCGUIREMEARS.COM](http://MCGUIREMEARS.COM)

Mandy Witt  
608.314.8252  
[mandy@mcguiremears.com](mailto:mandy@mcguiremears.com)

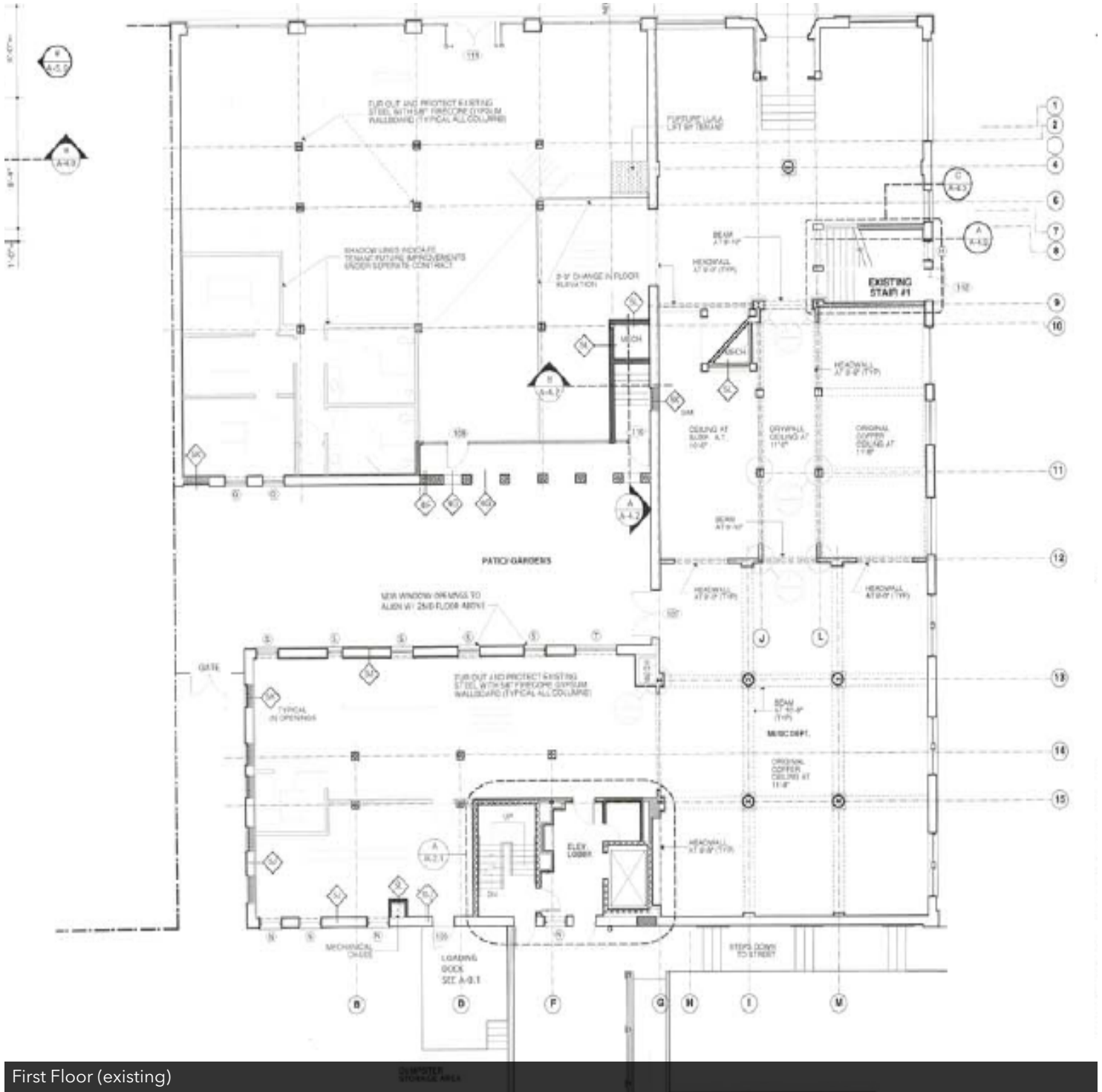
 **COLDWELL  
BANKER  
COMMERCIAL**  
MCGUIRE MEARS & ASSOCIATES



# BELOIT HOTEL BUILDING

444 E Grand Ave, Beloit, WI 53511

LEASE



First Floor (existing)

MCGUIREMEARS.COM

Mandy Witt  
608.314.8252  
mandy@mcguiremears.com



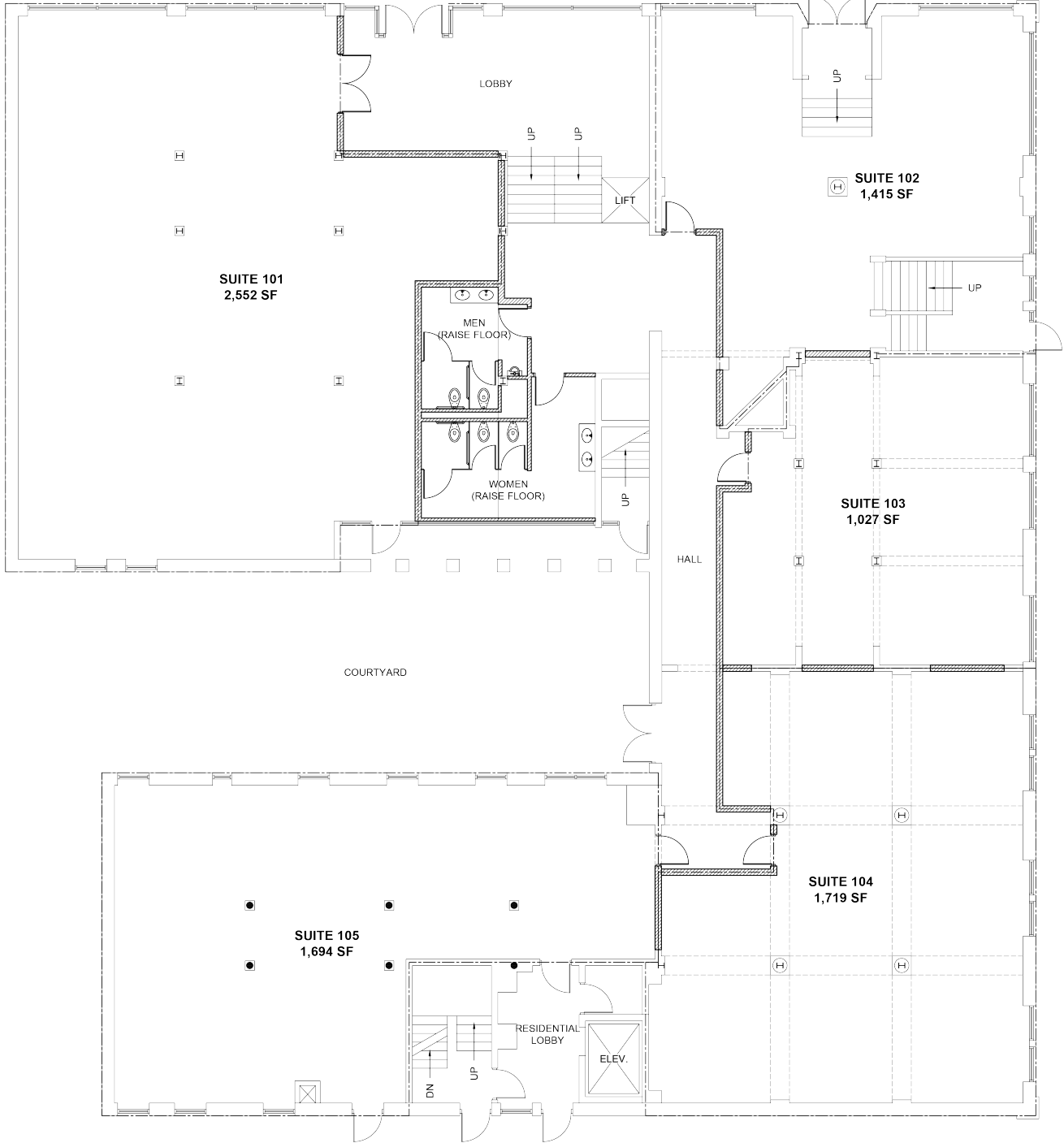
MCGUIRE MEARS & ASSOCIATES



# BELOIT HOTEL BUILDING

444 E Grand Ave, Beloit, WI 53511

LEASE



First Floor (proposed)

[MCGUIREMEARS.COM](http://MCGUIREMEARS.COM)

Mandy Witt  
608.314.8252  
[mandy@mcguiremeears.com](mailto:mandy@mcguiremeears.com)



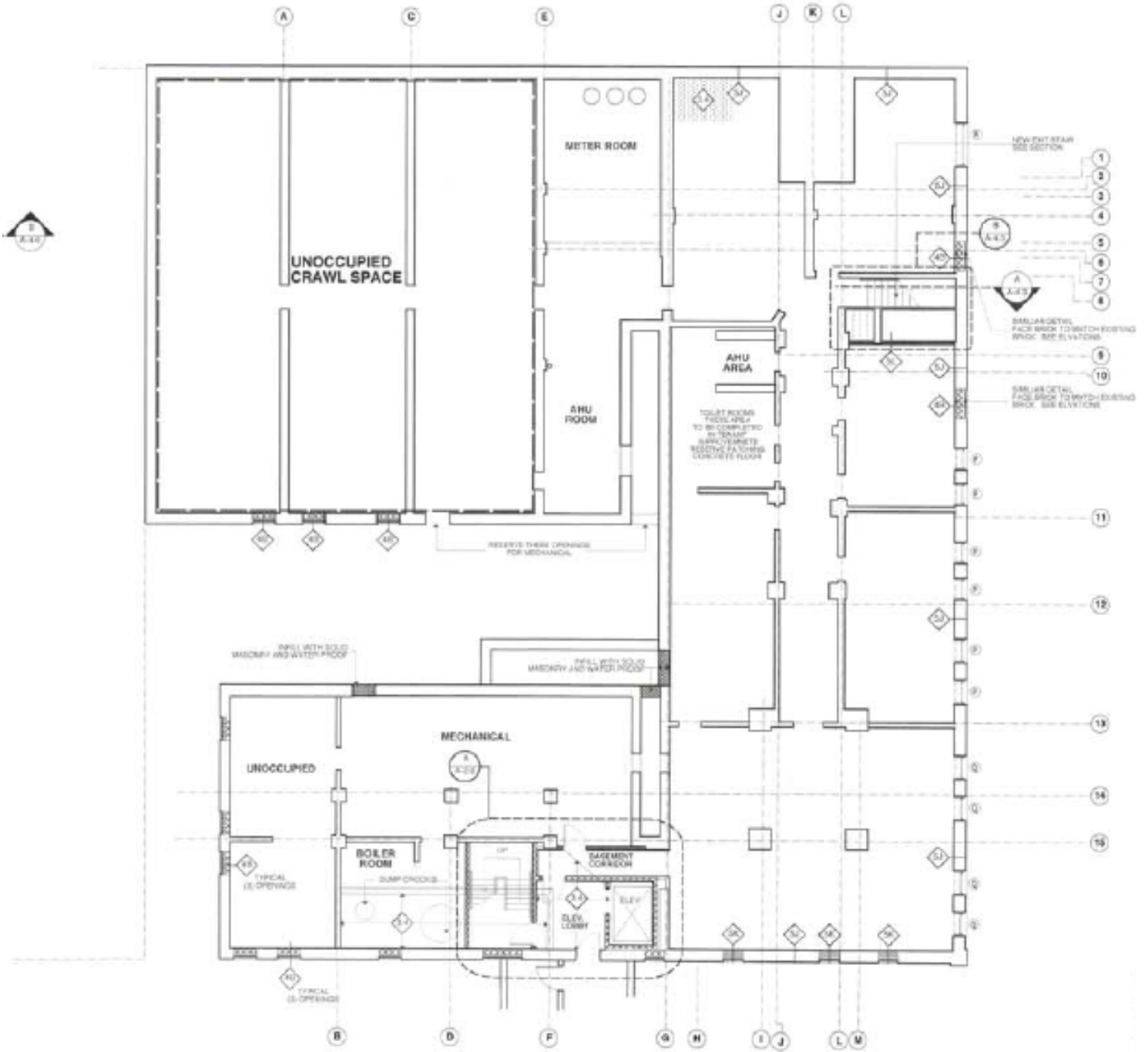
MCGUIRE MEARS & ASSOCIATES



# BELOIT HOTEL BUILDING

444 E Grand Ave, Beloit, WI 53511

LEASE



Basement Level (existing)

MCGUIREMEARS.COM

Mandy Witt  
608.314.8252  
mandy@mcguiremears.com



# BELOIT HOTEL BUILDING

444 E Grand Ave, Beloit, WI 53511

LEASE



Google

Map data ©2019 Imagery ©2019, Maxar Technologies, U.S. Geological Survey, USDA Farm Service Agency

MCGUIREMEARS.COM

Mandy Witt  
608.314.8252  
mandy@mcguiremears.com



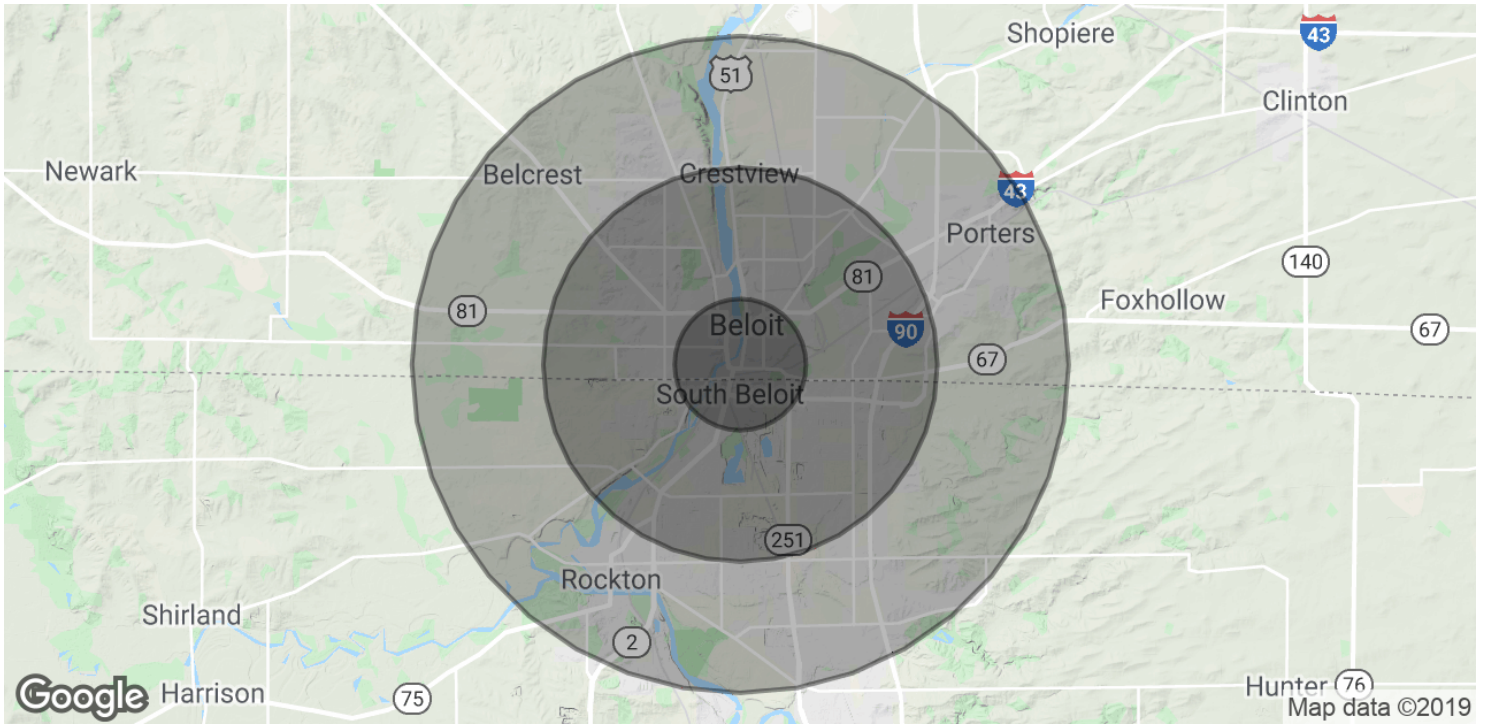
MCGUIRE MEARS & ASSOCIATES



# BELOIT HOTEL BUILDING

444 E Grand Ave, Beloit, WI 53511

LEASE



POPULATION	1 MILE	3 MILES	5 MILES
Total Population	9,822	51,935	82,049
Median age	26.7	33.2	35.8
Median age (Male)	25.4	31.2	34.0
Median age (Female)	28.1	35.1	37.2
HOUSEHOLDS & INCOME	1 MILE	3 MILES	5 MILES
Total households	3,231	19,198	30,659
# of persons per HH	3.0	2.7	2.7
Average HH income	\$38,024	\$46,549	\$54,722
Average house value	\$110,876	\$112,677	\$133,913

\* Demographic data derived from 2010 US Census

MCGUIREMEARS.COM

Mandy Witt  
608.314.8252  
mandy@mcguiremeears.com



MCGUIRE MEARS & ASSOCIATES



# STATE OF WISCONSIN

## BROKER DISCLOSURE TO NON-RESIDENTIAL CUSTOMERS

Wisconsin law requires all real estate licensees to give the following information about brokerage services to prospective customers.

Prior to negotiating on your behalf the brokerage firm, or an agent associated with the firm, must provide you the following disclosure statement:

### BROKER DISCLOSURE TO CUSTOMERS

You are the customer of the brokerage firm (hereinafter Firm). The Firm is either an agent of another party in the transaction or a subagent of another firm that is the agent of another party in the transaction. A broker or a salesperson acting on the behalf of the Firm may provide brokerage services to you. Whenever the Firm is providing brokerage services to you, the Firm and its brokers and salespersons (hereinafter Agents) owe you, the customer, the following duties:

- The duty to provide brokerage services to you fairly and honestly.
- The duty to exercise reasonable skill and care in providing brokerage services to you.
- The duty to provide you with accurate information about market conditions within a reasonable time if you request it, unless disclosure of the information is prohibited by law.
- The duty to disclose to you in writing certain Material Adverse Facts about a property, unless disclosure of the information is prohibited by law (see "Definition of Material Adverse Facts" below).
- The duty to protect your confidentiality. Unless the law requires it, the Firm and its Agents will not disclose your confidential information or the confidential information of other parties (see "Confidentiality Notice to Customers" below).
- The duty to safeguard trust funds and other property held by the Firm or its Agents.
- The duty, when negotiating, to present contract proposals in an objective and unbiased manner and disclose the advantages and disadvantages of the proposals.

Please review this information carefully. An Agent of the Firm can answer your questions about brokerage services, but if you need legal advice, tax advice, or a professional home inspection, contact an attorney, tax advisor, or home inspector.

This disclosure is required by section 452.135 of the Wisconsin statutes and is for information only. It is a plain-language summary of a broker's duties to a customer under section 452.133(1) of the Wisconsin statutes.

### CONFIDENTIALITY NOTICE TO CUSTOMERS

The Firm and its Agents will keep confidential any information given to the Firm and its Agents in confidence, or any information obtained by the Firm and its Agents that a reasonable person would want to be kept confidential, unless the information must be disclosed by law or you authorize the Firm to disclose particular information. The Firm and its Agents shall continue to keep the information confidential after the Firm is no longer providing brokerage services to you.

The following information is required to be disclosed by law.

1. Material Adverse Facts, as defined in Wis. Stat. § 452.01(5g) (see "Definition of Material Adverse Facts" below).
2. Any facts known by the Firm or its Agents that contradict any information included in a written inspection report

on the property or real estate that is the subject of the transaction.

To ensure that the Firm and its Agents are aware of what specific information you consider confidential, you may list that information below or provide that information to the Firm or its Agents by other means. At a later time, you may also provide the Firm or its Agents with other information you consider to be confidential.

CONFIDENTIAL INFORMATION: \_\_\_\_\_

NON-CONFIDENTIAL INFORMATION (The following information may be disclosed by the Firm and its Agents): \_\_\_\_\_

(Insert information you authorize to be disclosed, such as financial qualification information.)

### DEFINITION OF MATERIAL ADVERSE FACTS

A "Material Adverse Fact" is defined in Wis. Stat. § 452.01(5g) as an Adverse Fact that a party indicates is of such significance, or that is generally recognized by a competent licensee as being of such significance to a reasonable party, that it affects or would affect the party's decision to enter into a contract or agreement concerning a transaction or affects or would affect the party's decision about the terms of such a contract or agreement.

An "Adverse Fact" is defined in Wis. Stat. § 452.01(1e) as a condition or occurrence that a competent licensee generally recognizes will significantly and adversely affect the value of the property, significantly reduce the structural integrity of improvements to real estate, or present a significant health risk to occupants of the property; or information that indicates that a party to a transaction is not able to or does not intend to meet his or her obligations under a contract or agreement made concerning the transaction.

### NOTICE ABOUT SEX OFFENDER REGISTRY

You may obtain information about the sex offender registry and persons registered with the registry by contacting the Wisconsin Department of Corrections on the internet at <http://www.doc.wi.gov> or by telephone at 608-240-5830.

No representation is made as to the legal validity of any provision or the adequacy of any provision on any specific transaction.



**COLDWELL  
BANKER  
COMMERCIAL**

**McGUIRE MEARS & ASSOC.**