

# Medical / Office Building for Lease

## 288 NORTH BROAD STREET, ELIZABETH

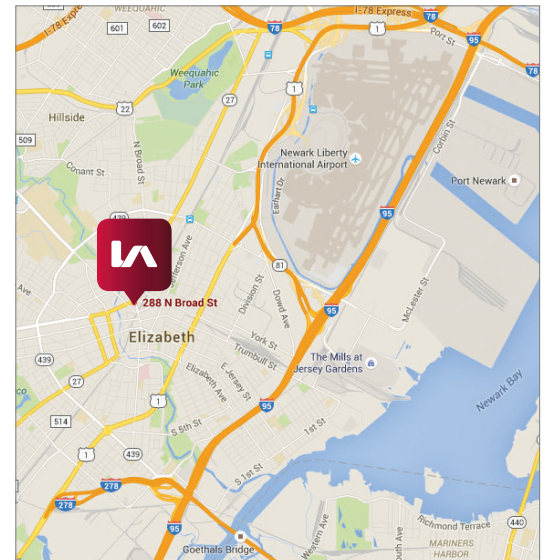


### LISTING DATA

<b>1<sup>ST</sup> FLOOR:</b>	762 SF
<b>2<sup>ND</sup> FLOOR:</b>	4,200 SF, Will Divide
<b>3<sup>RD</sup> FLOOR:</b>	4,000 SF, Will Divide

### FEATURES:

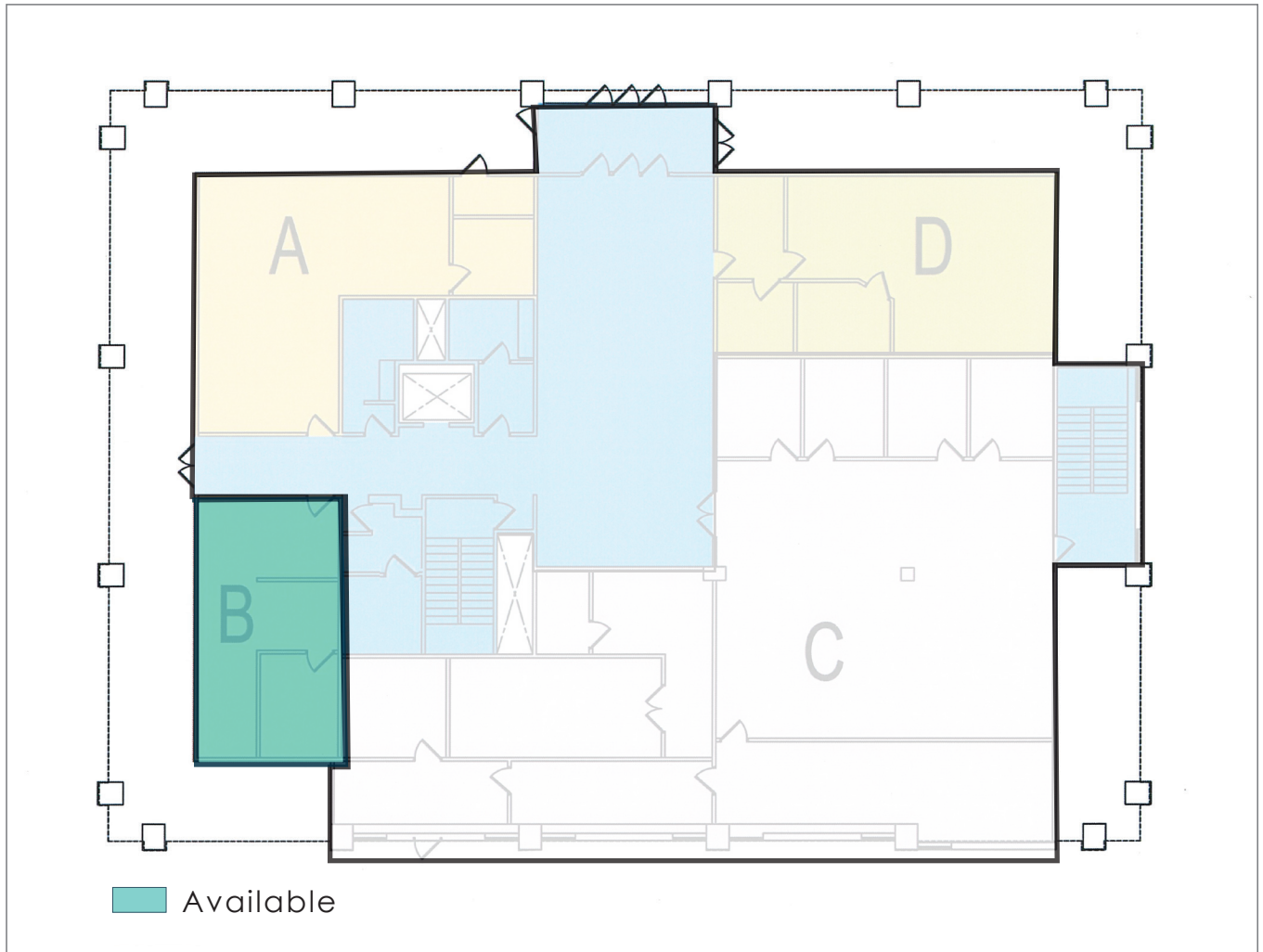
- Three story free standing 31,000 SF building with onsite secure parking and security guard on premise
- 4,200 SF available with 2 restrooms and kitchenette
- 4,000 SF available for Professional and Medical office
- Access to NJ Transit bus stops, Elizabeth Train Station, Newark International Airport, NJ Turnpike and Routes I-278, I-78, 1 & 9, 22
- Amenities: Bank of America (full service bank on 1<sup>st</sup> floor), post office, restaurants and shopping nearby



Rick Gelmetti | Executive Vice President  
rick.gelmetti@lee-associates.com  
D 732.204.1128

All information furnished regarding property for sale, rental or financing is from sources deemed reliable, but no warranty or representation is made to the accuracy thereof and same is submitted to errors, omissions, change of price, rental or other conditions prior to sale, lease or financing or withdrawal without notice. No liability of any kind is to be imposed on the broker herein.

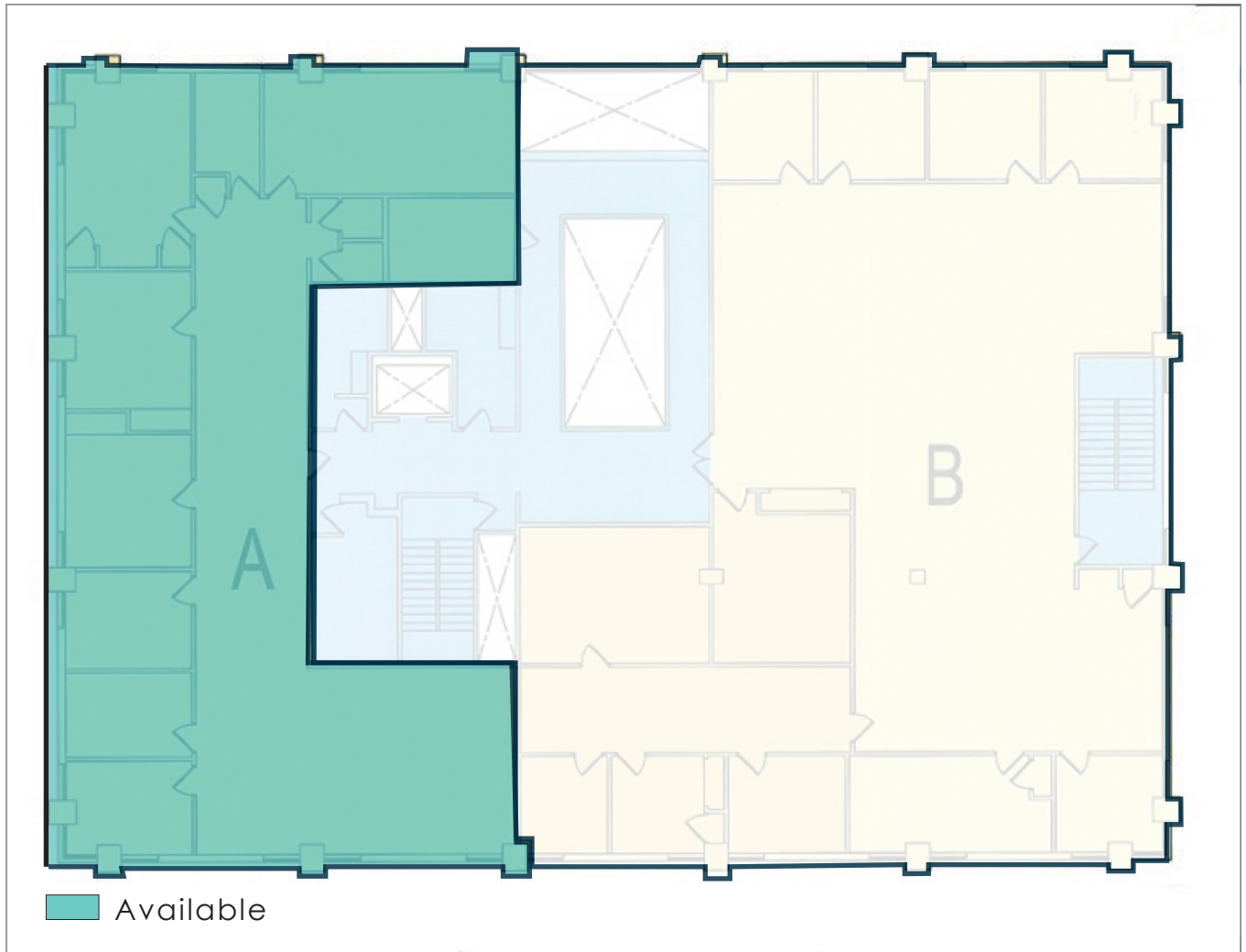
## 1<sup>ST</sup> FLOOR PLAN



Rick Gelmetti | Executive Vice President  
rick.gelmetti@lee-associates.com  
D 732.204.1128

All information furnished regarding property for sale, rental or financing is from sources deemed reliable, but no warranty or representation is made to the accuracy thereof and same is submitted to errors, omissions, change of price, rental or other conditions prior to sale, lease or financing or withdrawal without notice. No liability of any kind is to be imposed on the broker herein.

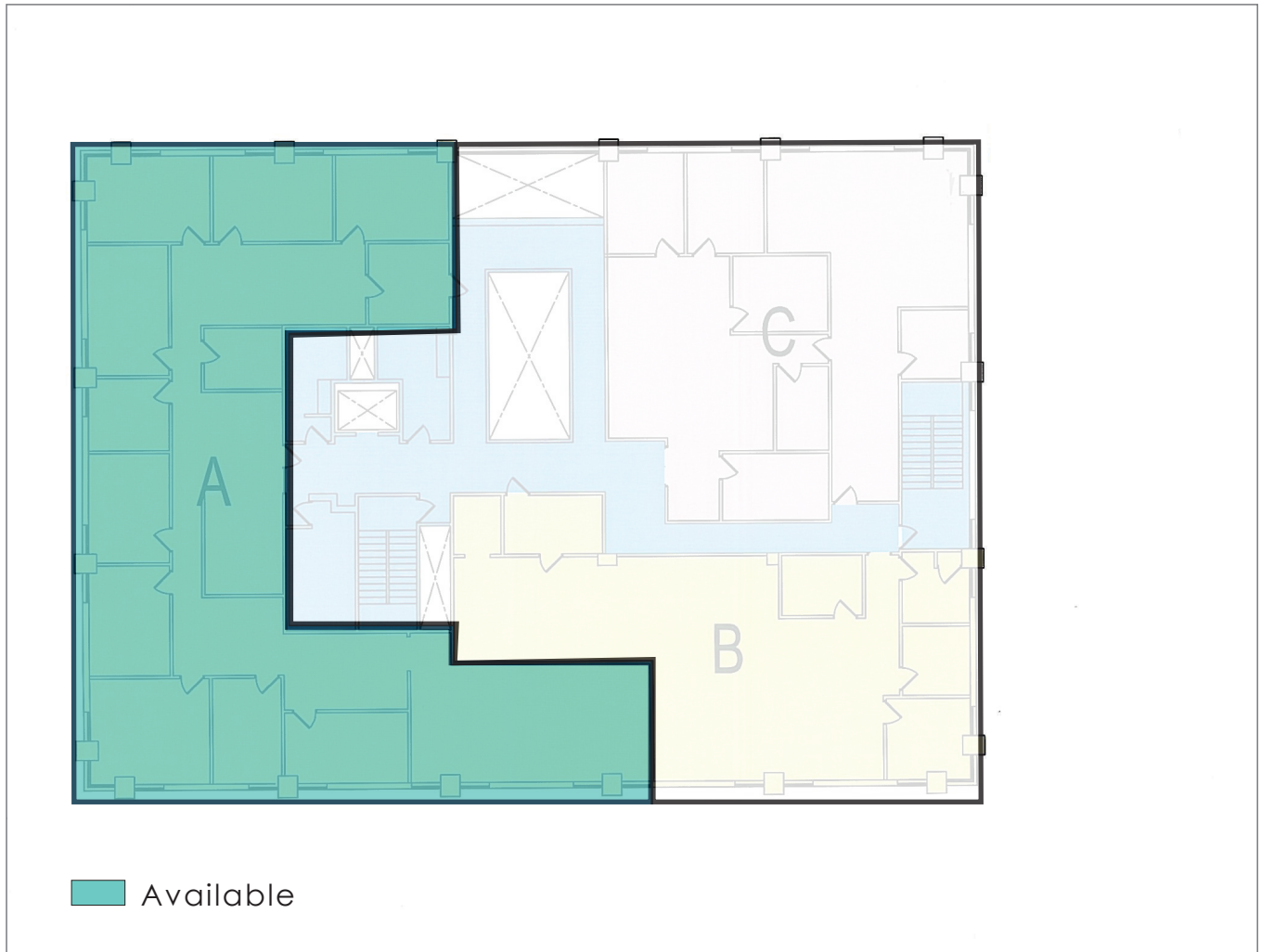
## 2<sup>ND</sup> FLOOR PLAN



Rick Gelmetti | Executive Vice President  
rick.gelmetti@lee-associates.com  
D 732.204.1128

All information furnished regarding property for sale, rental or financing is from sources deemed reliable, but no warranty or representation is made to the accuracy thereof and same is submitted to errors, omissions, change of price, rental or other conditions prior to sale, lease or financing or withdrawal without notice. No liability of any kind is to be imposed on the broker herein.

### 3<sup>RD</sup> FLOOR PLAN



Rick Gelmetti | Executive Vice President  
rick.gelmetti@lee-associates.com  
D 732.204.1128

All information furnished regarding property for sale, rental or financing is from sources deemed reliable, but no warranty or representation is made to the accuracy thereof and same is submitted to errors, omissions, change of price, rental or other conditions prior to sale, lease or financing or withdrawal without notice. No liability of any kind is to be imposed on the broker herein.