

Developed Out-Parcel Sites

Corner of Cobb Parkway and Kennesaw Due West Road | Kennesaw, Georgia 30152 | Cobb County



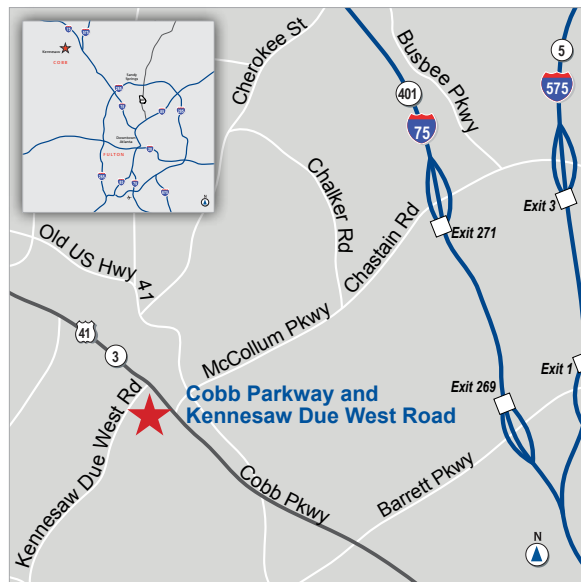
COMMERCIAL SITES FOR SALE

LAND AVAILABLE

- Parcel A - Corner 1.8 acres (\$950,000)
- Parcel B - 1.1 acres (\$600,000)
- Parcel C - 0.75 acres (\$400,000)

HIGHLIGHTS

- Signalized traffic light at corner
 - Daily traffic count is 40,000±
 - Graded sites with utilities
 - Zoned CRC: Community Retail Commercial
 - Part of 34-acre, master-planned development
 - Adjacent to Servis 1st Bank branch
 - Demographics (2014):
- | | 1 mile | 3 miles | 5 miles |
|-------------------|----------|----------|----------|
| Population | 6,264 | 67,913 | 160,936 |
| Households | 2,309 | 24,275 | 58,744 |
| Average HH Income | \$68,763 | \$76,006 | \$76,558 |



Ackerman & Co.

LARRY WOOD
770.913.3902
lwood@ackermanco.net



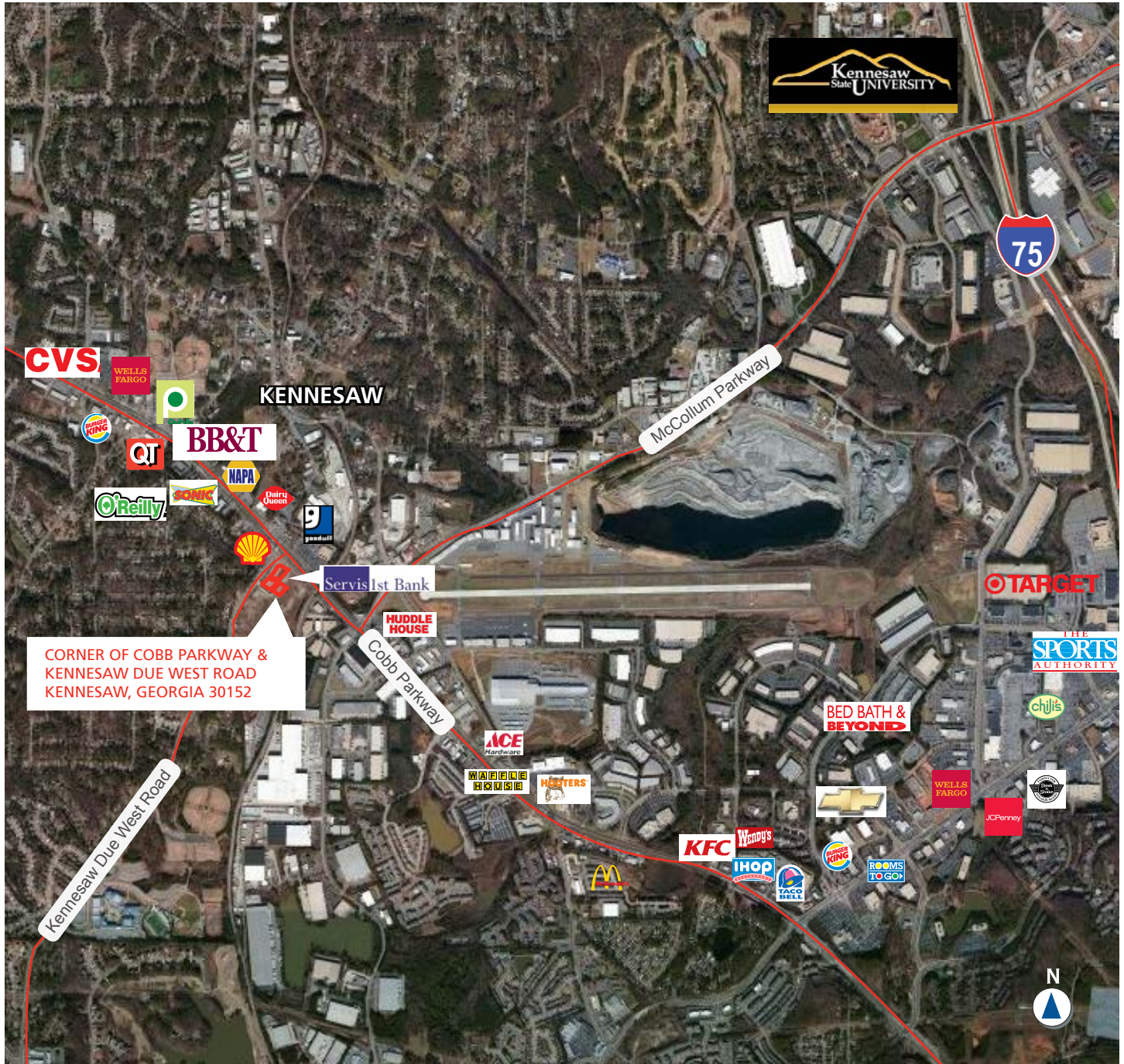
KYLE GABLE
404.867.3332
kgable@pioneerlandga.com

Developed Out-Parcel Sites

Commercial Sites for Sale

Kennesaw, Georgia 30152
Cobb County

AERIAL SHOWING RETAIL



Ackerman & Co.

LARRY WOOD
770.913.3902
lwood@ackermanco.net



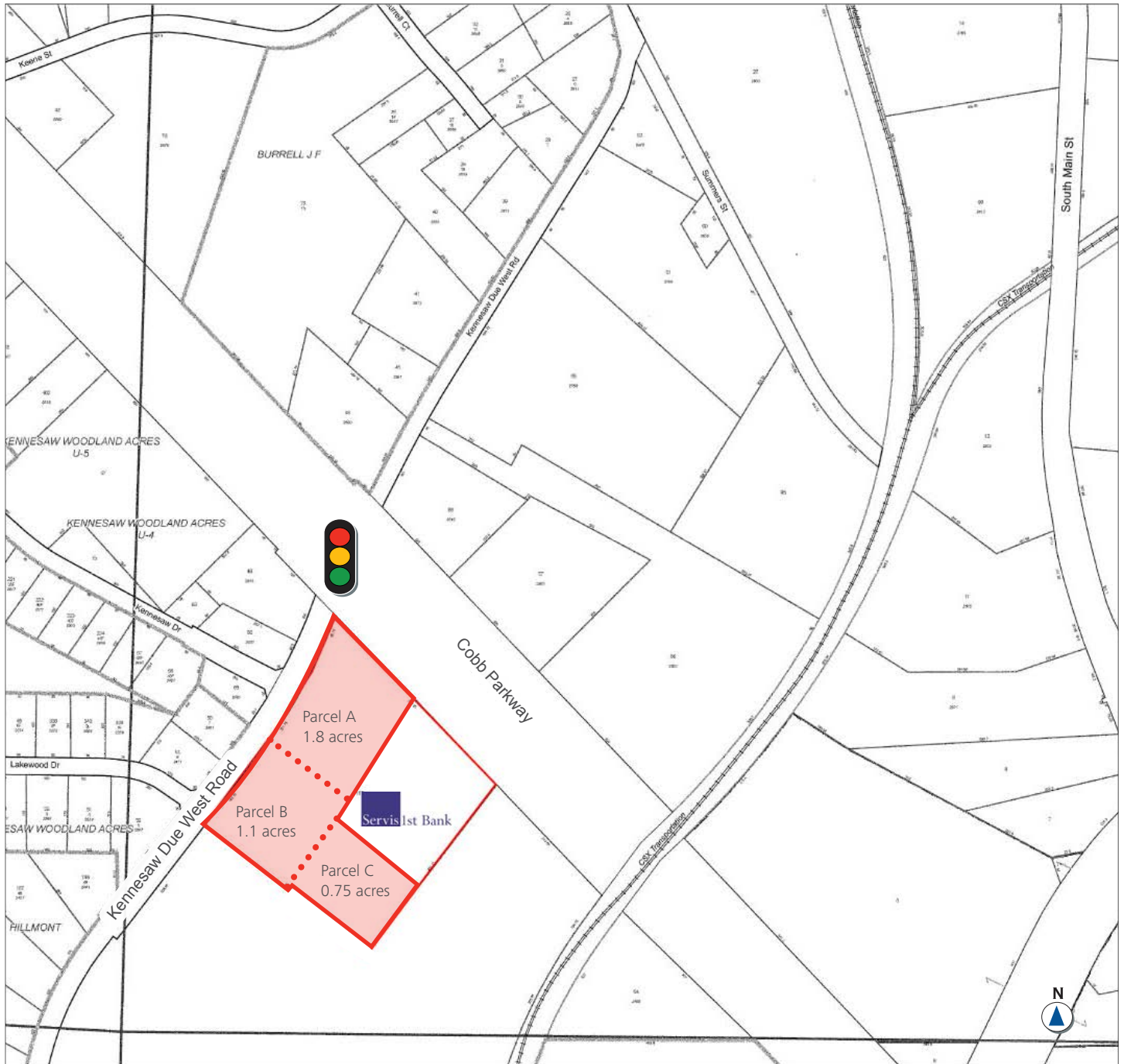
KYLE GABLE
404.867.3332
kgable@pioneerlandga.com

Developed Out-Parcel Sites

Commercial Sites for Sale

Kennesaw, Georgia 30152
Cobb County

SITE MAP



Ackerman & Co.

LARRY WOOD
770.913.3902
lwood@ackermanco.net



KYLE GABLE
404.867.3332
kgable@pioneerlandga.com