



VALUE INDUSTRIAL PARTNERS, LLC

Industrial Real Estate Investment, Brokerage and Management

970 N. Oaklawn Avenue, Elmhurst, Illinois 60126 TEL: 630-333-1900 FAX: 630-333-1910

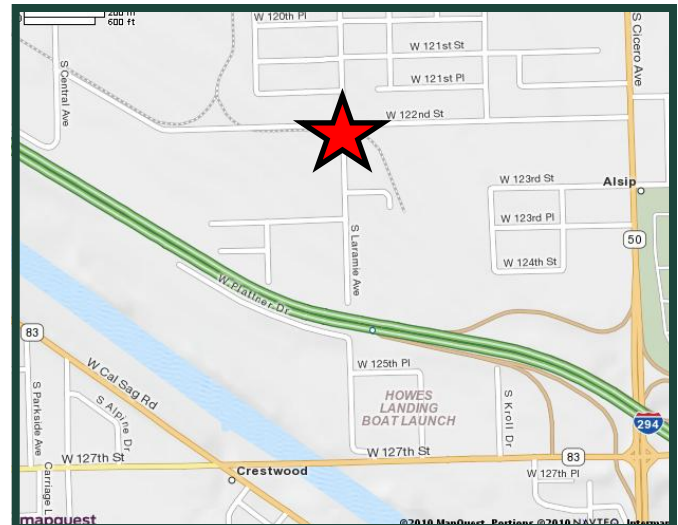


**12235 S. Laramie Avenue
Alsip, Illinois**

**FOR LEASE
18,694 SF**

Building Specifications

Available Size	18,694 Square Feet
Building Size:	78,916 Square Feet
Office:	20%
Ceiling Height:	16'
Loading:	2 Docks 1 Drive-in Door
Parking:	Ample
Heat:	Gas
Operating Expenses:	Included with Current Stop
Real Estate Taxes:	Included with Current Stop
Lease Rate:	\$8.25 PSF Gross



For Further Information, Please Contact:

Brian M. Liston, Principal
bliston@valueindustrialpartners.com

Brian P. Gedvilas, Director of Leasing
bgedvilas@valueindustrialpartners.com

TEL: 630-333-1900 FAX: 630-333-1910

Comments

- Professionally owned and managed
- Excellent access to I-294
- Corner location at 122nd Street and Laramie

Officers of the firm have an ownership interest in this property.
Submitted subject to error, change in status, or withdrawal without notice.

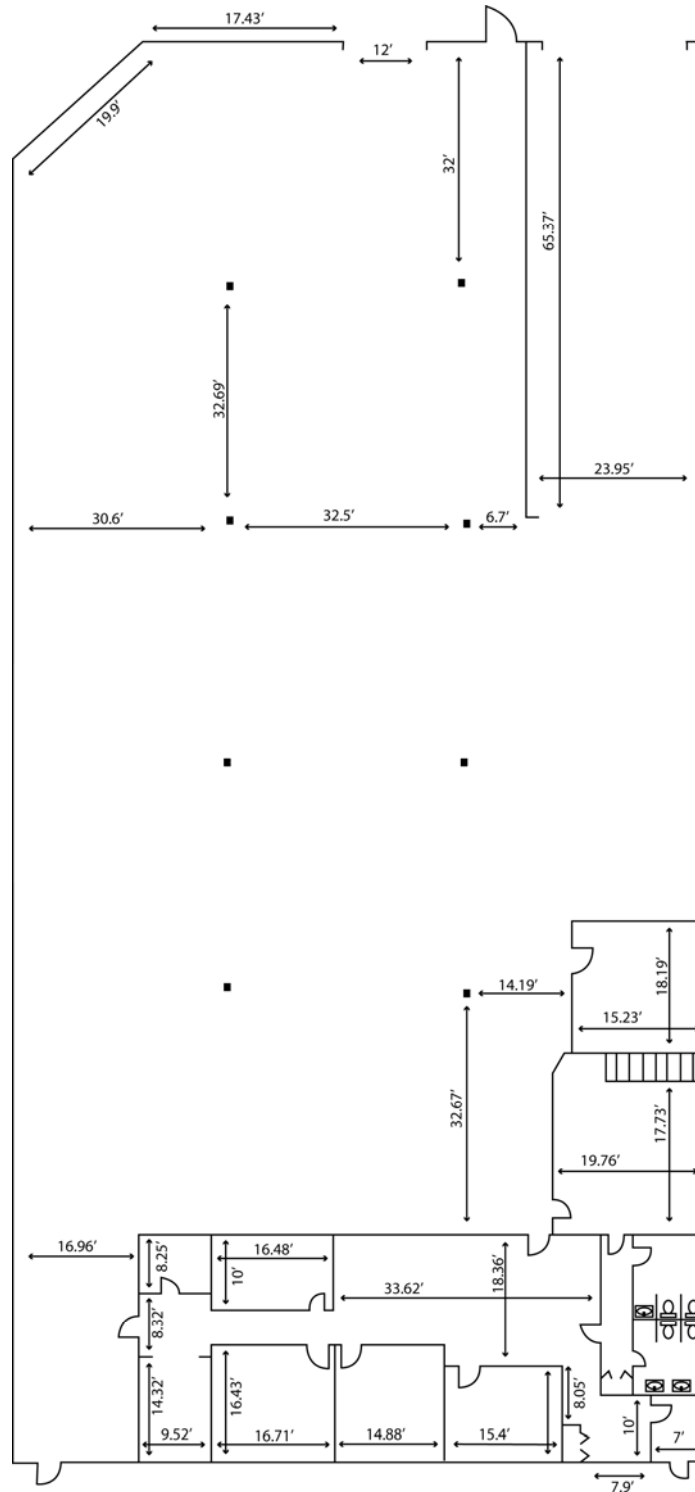


VALUE INDUSTRIAL PARTNERS, LLC

Industrial Real Estate Investment, Brokerage and Management

970 N. Oaklawn Avenue, Elmhurst, Illinois 60126 TEL: 630-333-1900 FAX: 630-333-1910

LAYOUT



12235 S. Laramie, Alsip

Officers of the firm have an ownership interest in this property.
Submitted subject to error, change in status, or withdrawal without notice.