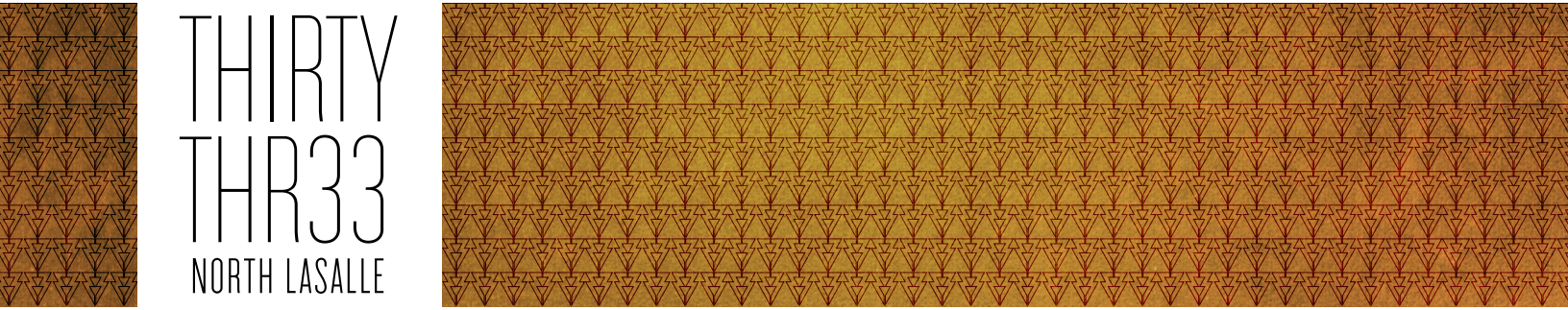


THIRTY
THR33
NORTH LASALLE





THIRTY THR33 NORTH LASALLE



STORIES 38

YEAR BUILT 1928 / R. 2020

OWNER The John Buck Company

MGMT. The John Buck Company

LEASING Transwestern

KATHLEEN BERTRAND

+ 1 312 881 7046

kathleen.bertrand@transwestern.com

ERIC MYERS

+ 1 312 881 7017

eric.myers@transwestern.com

BUILT FOR BUSINESS. UPDATED TO IMPRESS.

Originally the American National Bank building, 33 North LaSalle stands as a proud pre-war treasure in the heart of Chicago's financial center. This 38-story art deco tower was built in 1928 and the rich history is evident in all the vintage architectural details. The ease of this location allows access to the Metra, El, CTA buses, City Hall and the courts. The building has truly transformed into a multi-faceted space for the modern tenant after a \$40 million dollar renovation to be completed in 2020.

Enjoy a full amenity package including a tenant lounge, conference center, fitness facility, bike room and golf simulator.



EXIT

EXIT

↑ Conference Rooms
← Management Office
→ Kitchenette
← Restrooms 1
↑ Drop Box

↑ Conference Rooms
← Management Office
→ Kitchenette
← Restrooms 1
↑ Drop Box

AMENITIES



FITNESS CENTER

Exceptionally designed 7,500 SF facility with spa-quality finishes, soaring 14 ft ceilings, weight room, aerobics room and spacious locker areas.



BIKE ROOM

Secure storage for 60+ bikes with direct access to locker rooms and showers.



CATERING KITCHEN

Full catering kitchen with large prep and serving area for special events.



MOJO COFFEE

An independent coffee roaster serving coffee your way plus fresh and delicious eats.



AMENITIES



LOUNGE

Collaboration space with WiFi for casual meetings, highlighted with original architectural details.



CONFERENCE ROOM

Lined with the American National Bank's original safety deposit boxes, this contemporary space seats 110 people complete with vintage character and charm.



GOLF BAY

State-of-the-art golf simulator with club storage to keep your swing in shape year-round.



**THIS HISTORIC BUILDING
OFFERS MODERN TENANTS
A UNIQUE ENVIRONMENT TO
THRIVE WHILE PROVIDING
EASY ACCESS TO CLIENTELE.
IT'S FITNESS, LEISURE AND
CONFERENCING ADDS TO
THE ONE-OF-A-KIND
EXPERIENCE. GO AHEAD:
WORK AT 33 N. LASALLE.**





SPEC SUITE 1050 - 5,704 SF

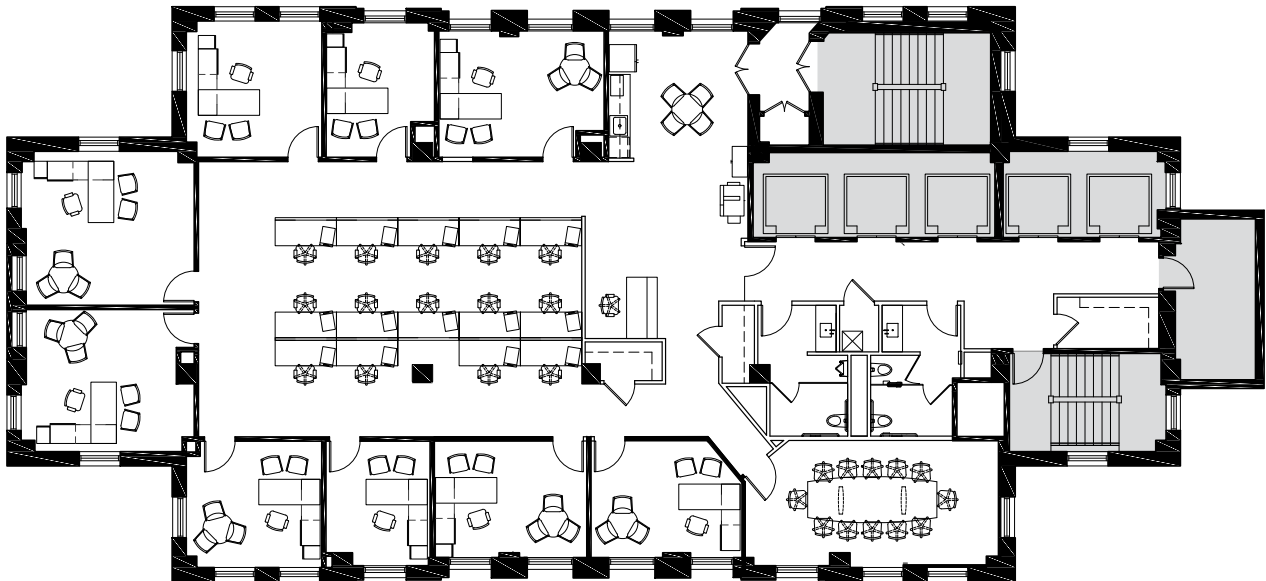


SPEC SUITE 2300 - 8,936 SF

THIRTY THR33 NORTH LASALLE

SUITE 3000

4,793 SF



Single tenant tower floor | reception | conference room | kitchen | 9 private offices | 14 workstations



FOR LEASING INFORMATION

KATHLEEN BERTRAND

+ 1 312 881 7046

kathleen.bertrand@transwestern.com

ERIC MYERS

+ 1 312 881 7017

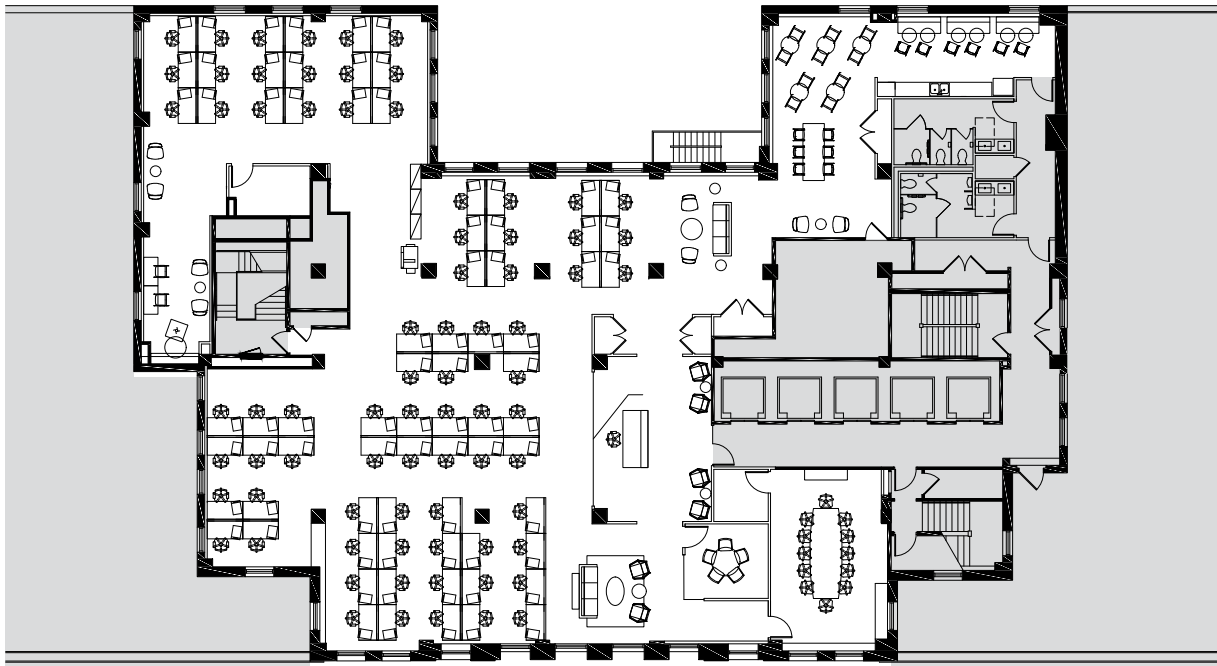
eric.myers@transwestern.com

THIRTY THR33

NORTH LASALLE

SUITE 2300

8,963 SF



70 workstations | 12 person conference room | 6 huddle areas | open kitchen

[Click for proposed furniture plan](#)

[View our 360° Virtual Tour](#)



FOR LEASING INFORMATION

KATHLEEN BERTRAND

+ 1 312 881 7046

kathleen.bertrand@transwestern.com

ERIC MYERS

+ 1 312 881 7017

eric.myers@transwestern.com

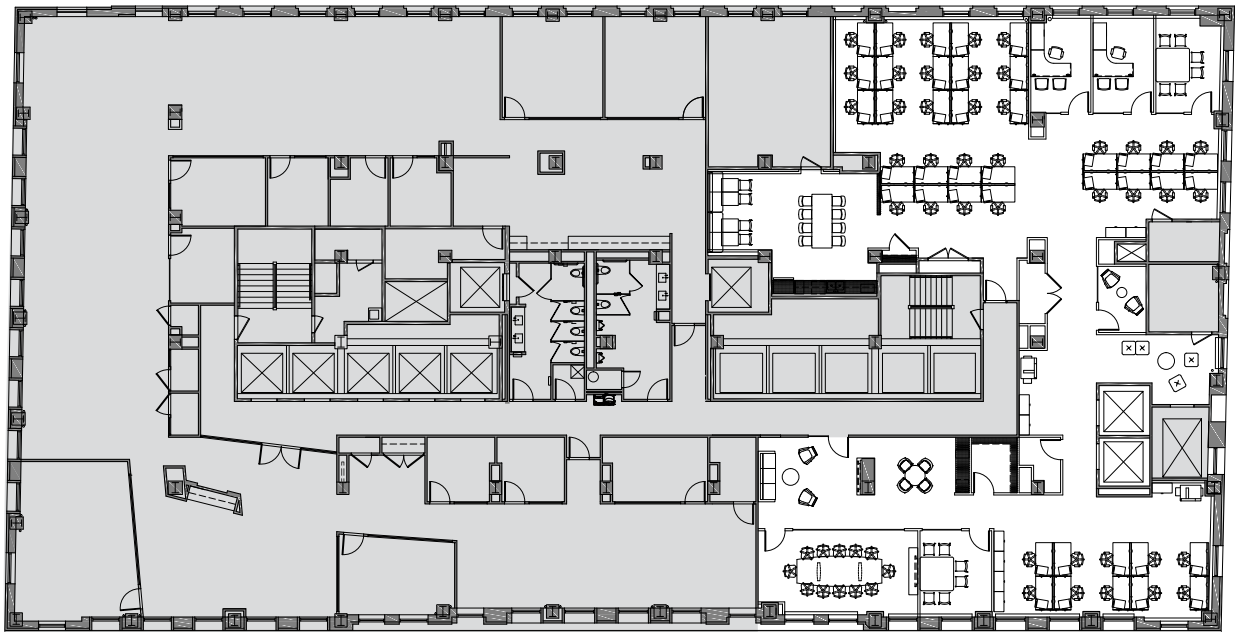


The John Buck Company

THIRTY THR33 NORTH LASALLE

SUITE 1050

5,704 SF



4 private offices | 41 workstations | 12 person conference room | reception | huddle areas | open kitchen

[Click for proposed furniture plan](#)

[View our 360° Virtual Tour](#)



FOR LEASING INFORMATION

KATHLEEN BERTRAND

+ 1 312 881 7046

kathleen.bertrand@transwestern.com

ERIC MYERS

+ 1 312 881 7017

eric.myers@transwestern.com



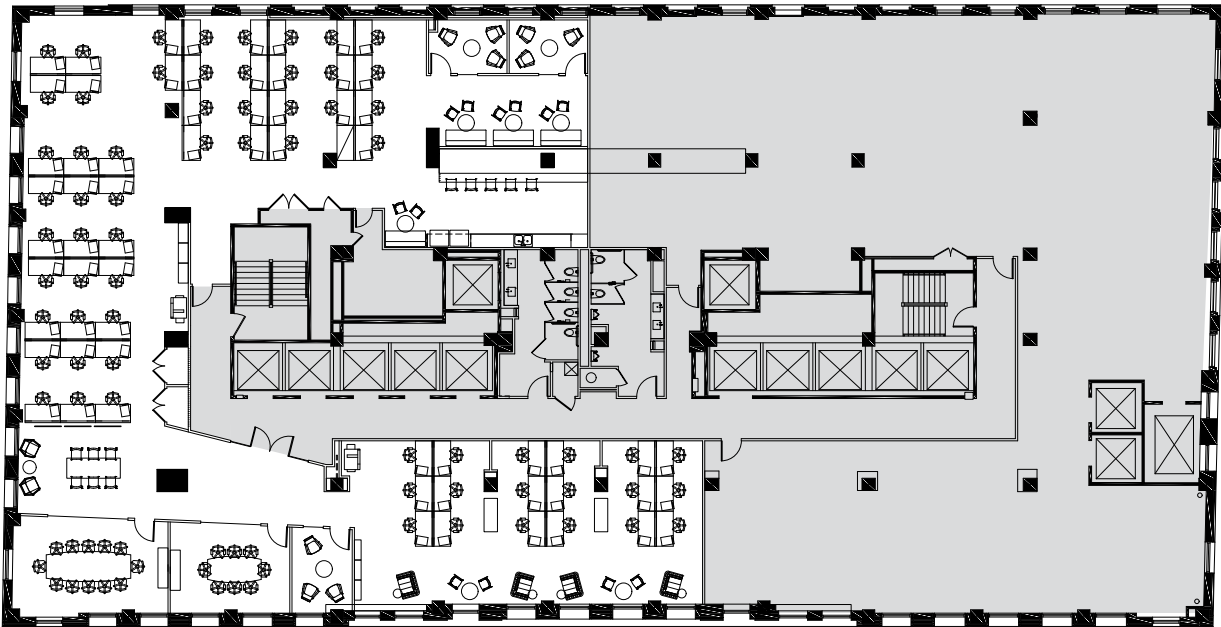
The John Buck Company

THIRTY THR33

NORTH LASALLE

SUITE 700

8,044 SF



64 workstations | 2 conference rooms | 3 huddle rooms | open kitchen

[Click for proposed furniture plan](#)

[View our 360° Virtual Tour](#)



FOR LEASING INFORMATION

KATHLEEN BERTRAND

+ 1 312 881 7046

kathleen.bertrand@transwestern.com

ERIC MYERS

+ 1 312 881 7017

eric.myers@transwestern.com

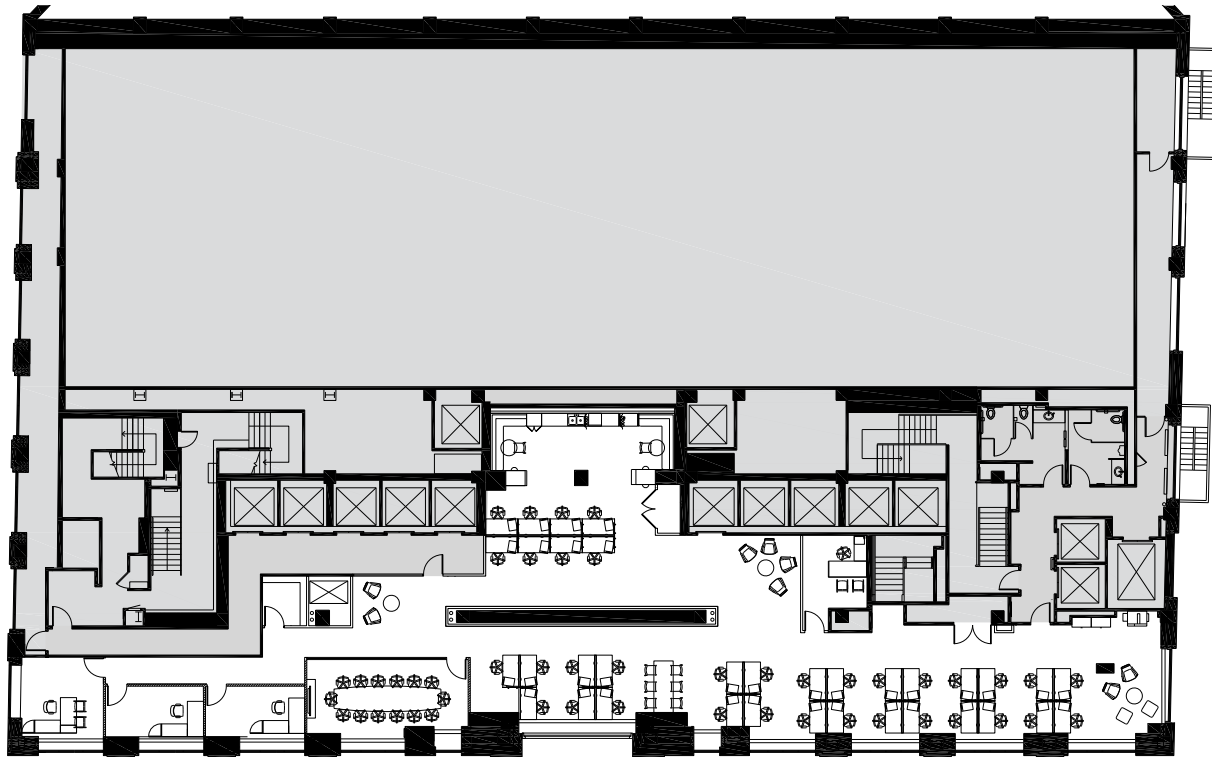


The John Buck Company

THIRTY THR33 NORTH LASALLE

SUITE 400

7,117 SF



4 private offices | 35 workstations | 14 person conference room | open kitchen

[Click for proposed furniture plan](#)



[View our 360° Virtual Tour](#)

FOR LEASING INFORMATION

KATHLEEN BERTRAND

+ 1 312 881 7046

kathleen.bertrand@transwestern.com

ERIC MYERS

+ 1 312 881 7017

eric.myers@transwestern.com



The John Buck Company

CONTACT US TODAY

KATHLEEN BERTRAND

+ 1 312 881 7046

kathleen.bertrand@transwestern.com

ERIC MYERS

+ 1 312 881 7017

eric.myers@transwestern.com

The John Buck Company

T TRANSWESTERN

