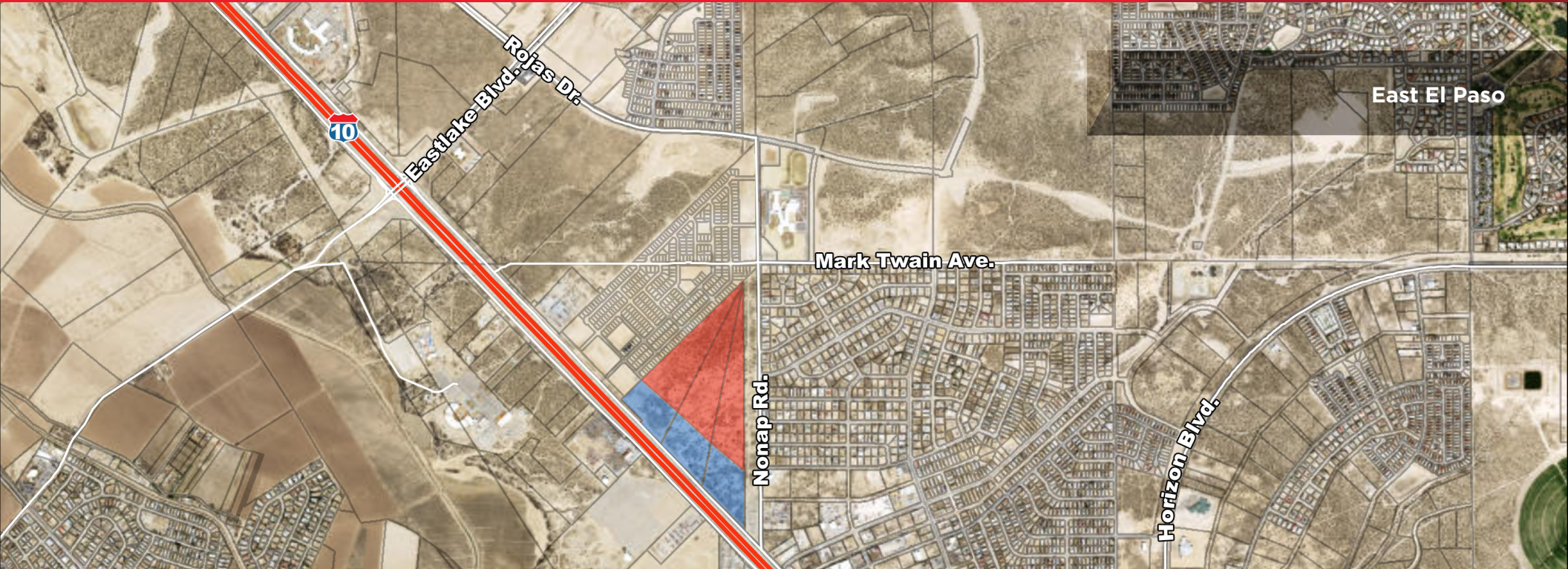




LAND FOR SALE

EASTLAKE HORIZON LAND

El Paso, Texas



Property Highlights

- Total land size: 76.411 ACRES (\$11,950,000)
- 26 ACRES (\$5,400,000)
Offers half mile of retail frontage opportunity on Interstate 10.
- 50 ACRES (\$6,550,000)
Suited for single family and multifamily development
- Located between Eastlake Blvd. and Horizon Blvd.
- No zoning restrictions.
- All utilities available.
- Parcels are situated near ±412 planned homes.
- ±20,000 new homes proposed in Horizon City area.
- ±2 miles to/from Joe Battle Blvd/Loop 375 with direct access to Interstate 10 to access all points of the city.
- Close proximity to El Paso Community College, Mission Ridge elementary, Eastlake High School, and Emerald Springs Golf Course.

Jacob Quinn
Sales Agent
(915) 843 8888 ext. 804
jqinn@piresintl.com

5-B Butterfield Trail Boulevard
El Paso, Texas 79906-4920
Main (915) 843 8888
www.piresintl.com

Independently Owned and Operated / A Member of the Cushman & Wakefield Alliance
Cushman & Wakefield Copyright 2015. No warranty or representation, express or implied, is made to the accuracy or completeness of the information contained herein, and same is submitted subject to errors, omissions, change of price, rental or other conditions, withdrawal without notice, and to any special listing conditions imposed by the property owner(s). As applicable, we make no representation as to the condition of the property (or properties) in question.

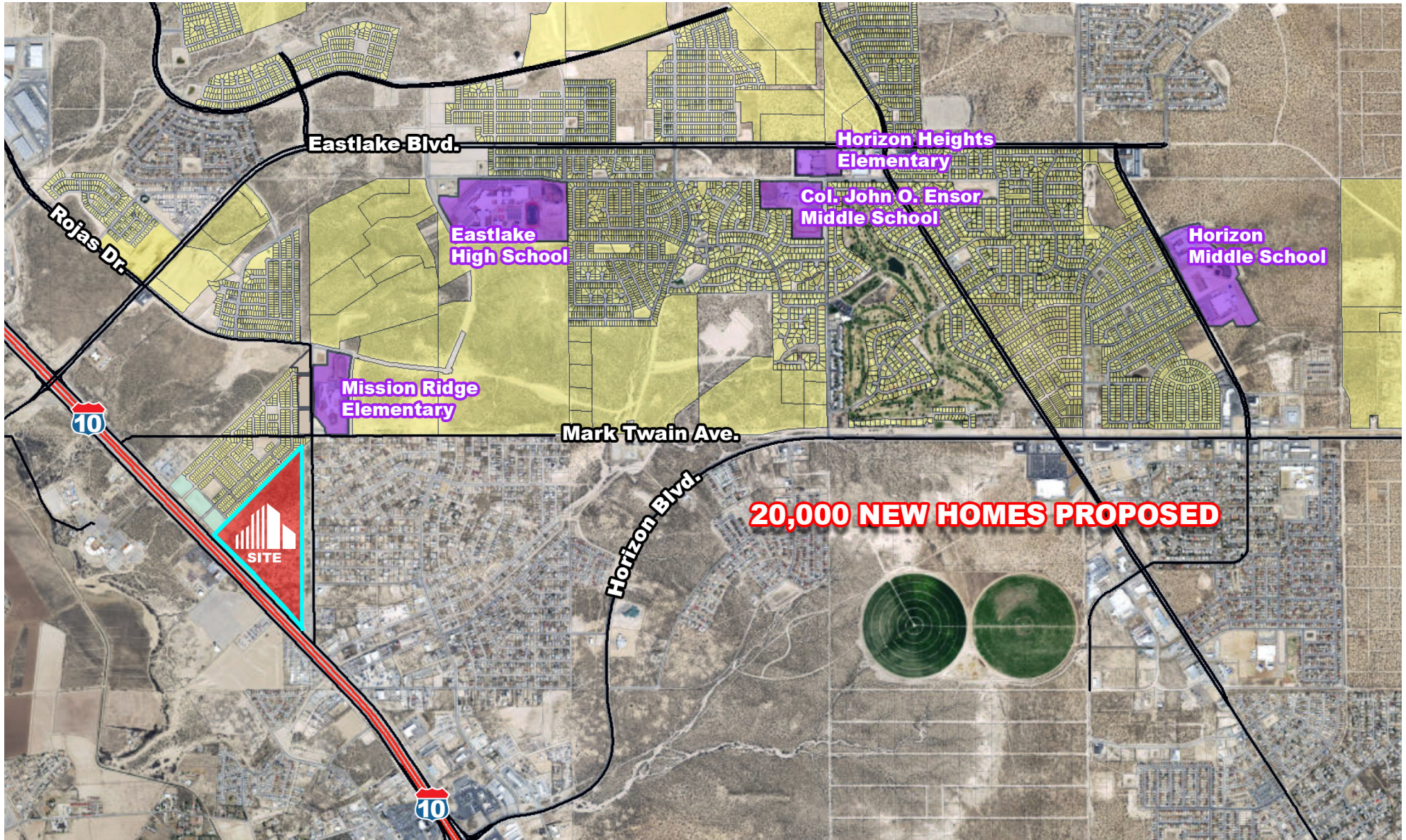


LAND FOR SALE

EASTLAKE HORIZON LAND

El Paso, Texas

Main Aerial

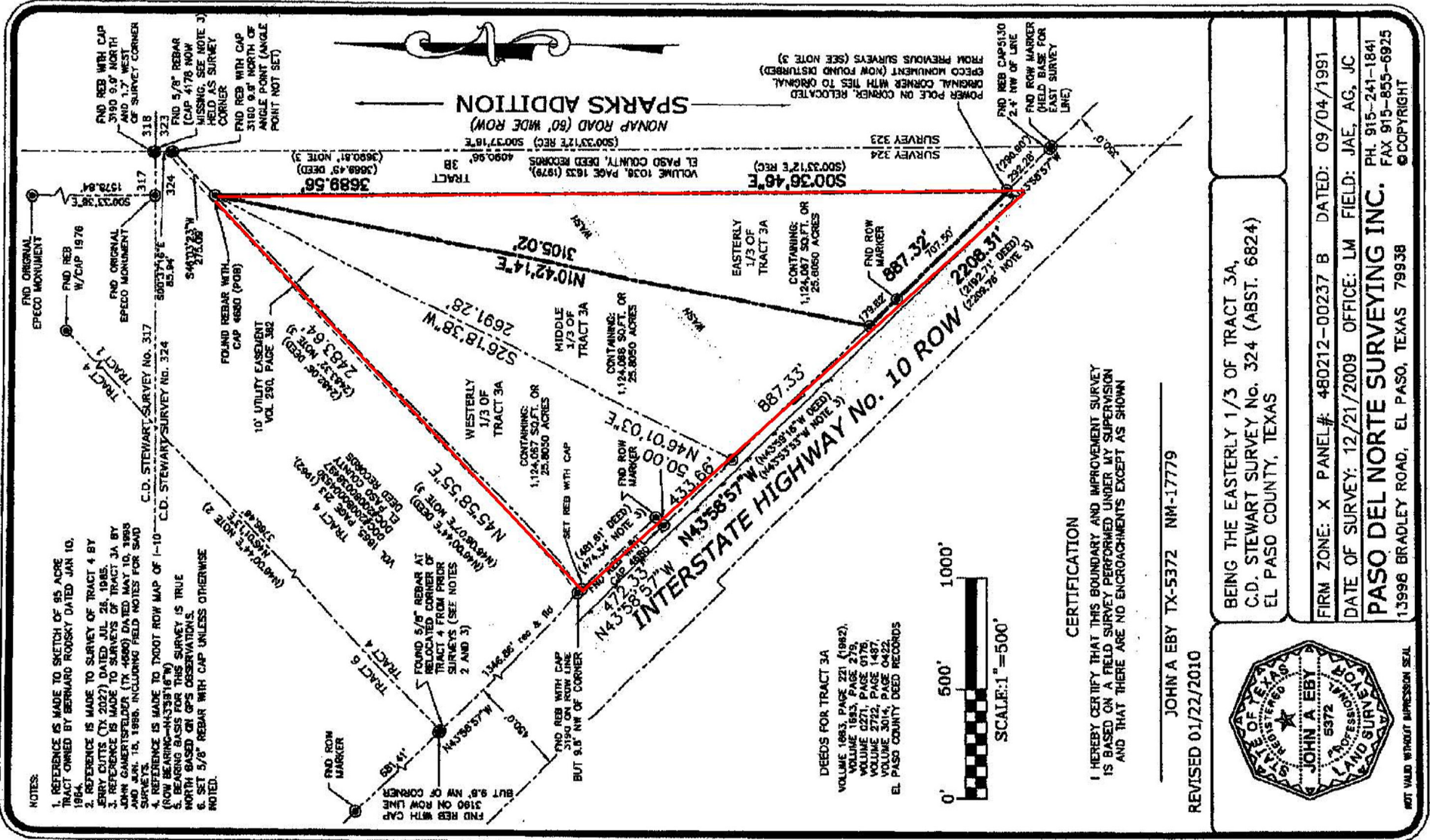


Independently Owned and Operated / A Member of the Cushman & Wakefield Alliance

Cushman & Wakefield Copyright 2015. No warranty or representation, express or implied, is made to the accuracy or completeness of the information contained herein, and same is submitted subject to errors, omissions, change of price, rental or other conditions, withdrawal without notice, and to any special listing conditions imposed by the property owner(s). As applicable, we make no representation as to the condition of the property (or properties) in question.

Survey

Exhibit "A" 2 of 2

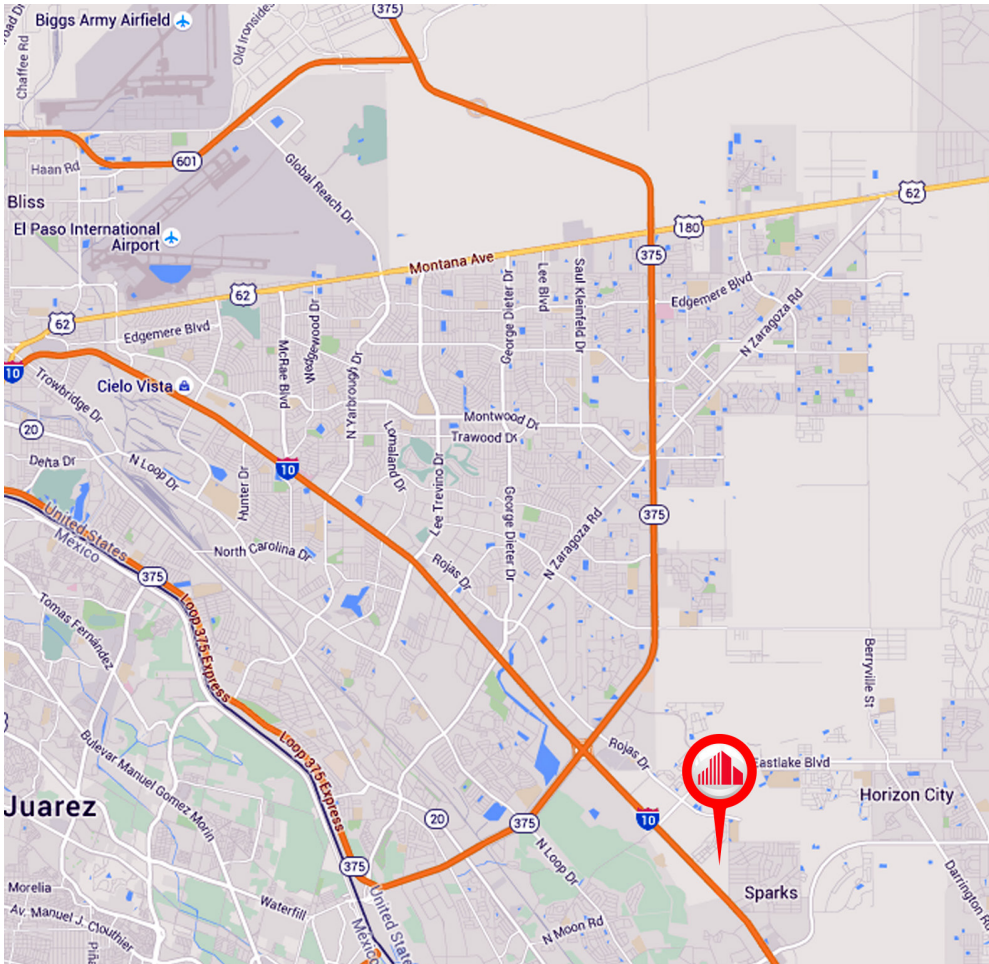




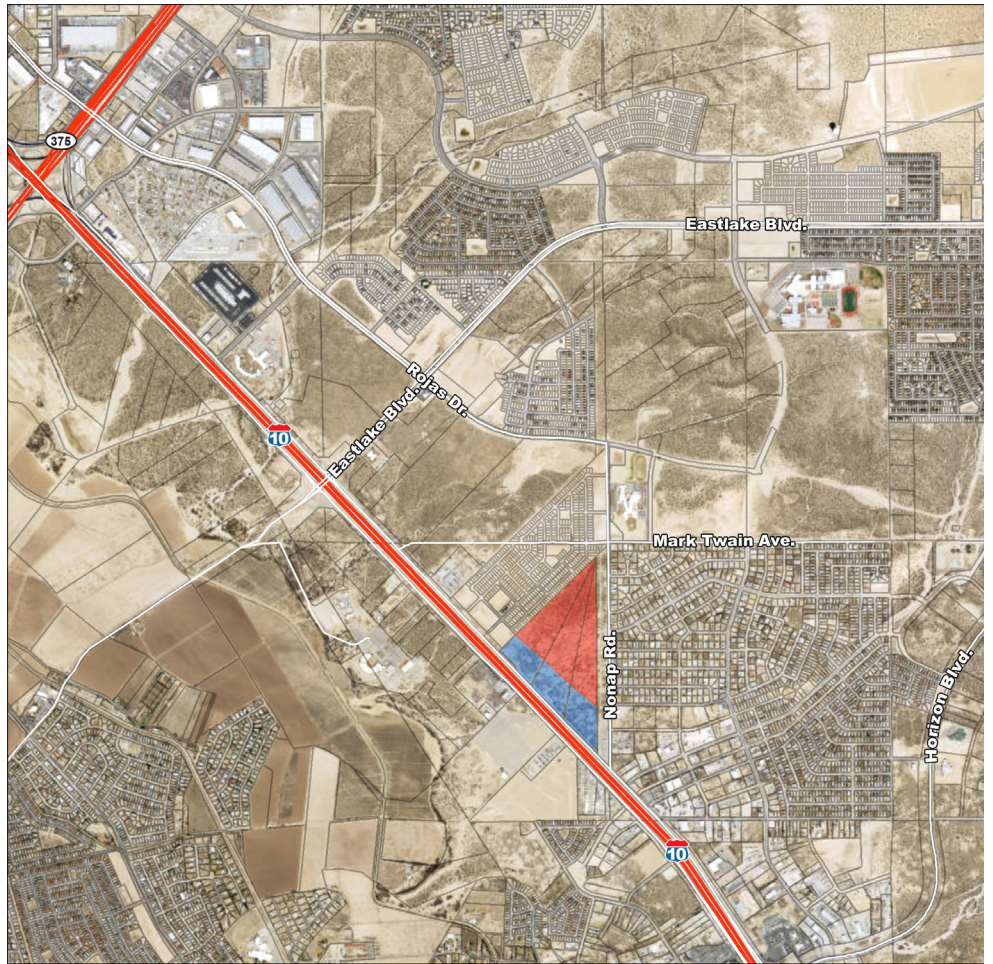
LAND FOR SALE

EASTLAKE HORIZON LAND

El Paso, Texas



MAP



AERIAL

Jacob Quinn
Sales Agent
(915) 843 8888 ext. 804
jqinn@piresintl.com

5-B Butterfield Trail Boulevard
El Paso, Texas 79906-4920
Main (915) 843 8888
www.piresintl.com

Independently Owned and Operated / A Member of the Cushman & Wakefield Alliance
Cushman & Wakefield Copyright 2015. No warranty or representation, express or implied, is made to the accuracy or completeness of the information contained herein, and same is submitted subject to errors, omissions, change of price, rental or other conditions, withdrawal without notice, and to any special listing conditions imposed by the property owner(s). As applicable, we make no representation as to the condition of the property (or properties) in question.