

3874 RESEARCH PARK DR.
ANN ARBOR, MICHIGAN



**SIGNATURE
ASSOCIATES**
KNOW SIGNATURE | KNOW RESULTS

HI-TECH FOR SALE OR LEASE
10,000-79,000 Square Foot Build-To-Suit

PLANNING COMMISSION APPROVED



**VIEW
VIDEO**



PROPERTY FEATURES

- 10,000 – 79,000 square foot build-to-suit available
- Office to suit
- 16' clear height
- (2) 12x14 grade level overhead doors
- Zoned Research District
- 221 parking spaces
- Quick convenient access to Downtown Ann Arbor, University of Michigan and I-94/State Street interchange
- Additional overhead doors can be added
- Located at Ann Arbor Research Park on the State Street Hi-Tech/R&D corridor
- Lease Rate: \$18.00 – \$19.00/sq.ft. NNN
- Sale Price: TBD based on level of finish



For more information, please contact:

JAY CHAVEY
(248) 948 4196
jchavey@signatureassociates.com

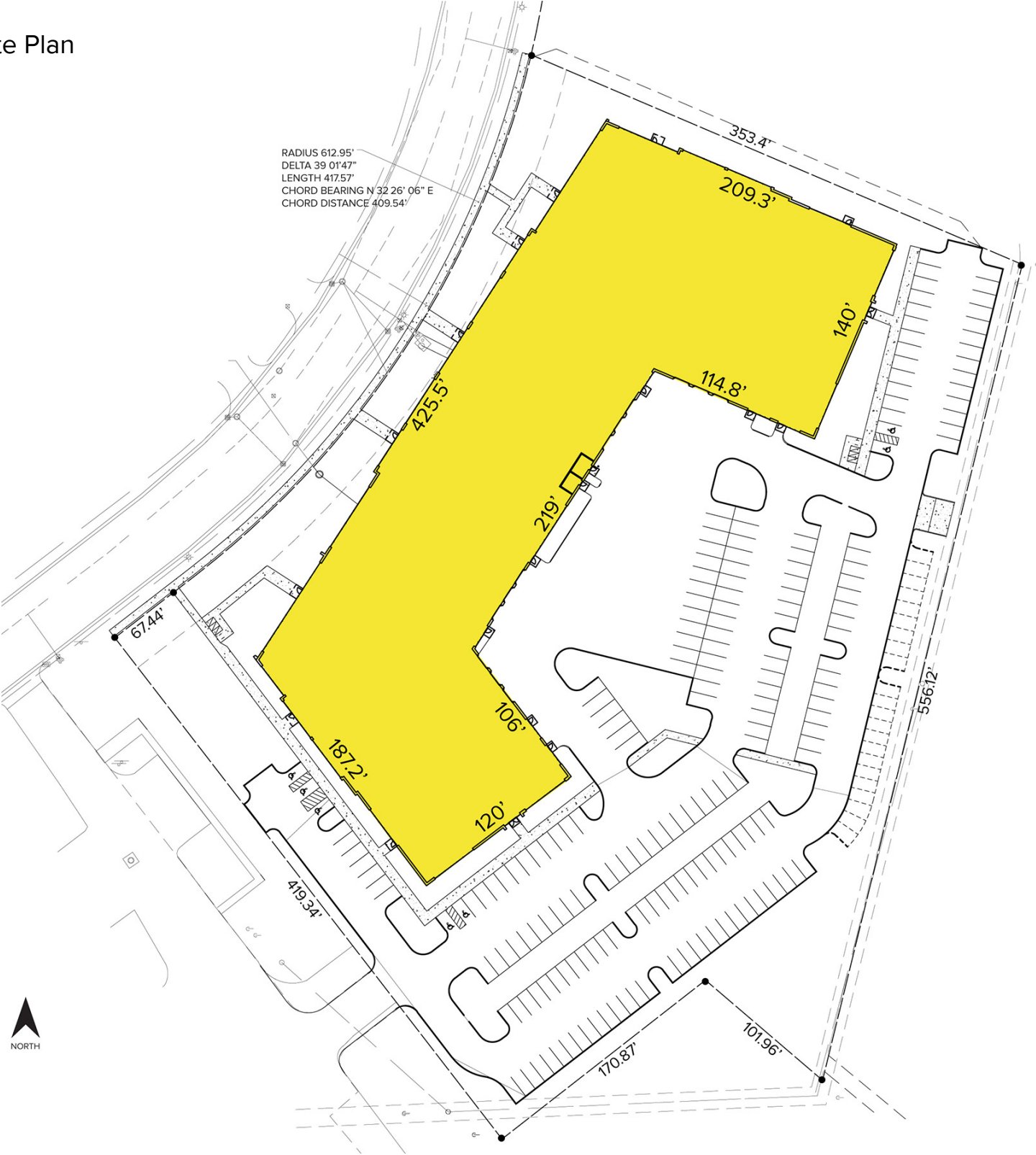
SIGNATURE ASSOCIATES
One Towne Square, Suite 1200
Southfield, MI 48076
www.signatureassociates.com

3874 Research Park Dr. – Ann Arbor, Michigan

Hi-Tech For Sale or Lease

10,000-79,000
Square Feet
AVAILABLE

Site Plan



For more information, please contact:
JAY CHAVEY
(248) 948 4196
jchavey@signatureassociates.com

SIGNATURE ASSOCIATES
One Towne Square, Suite 1200
Southfield, MI 48076
www.signatureassociates.com

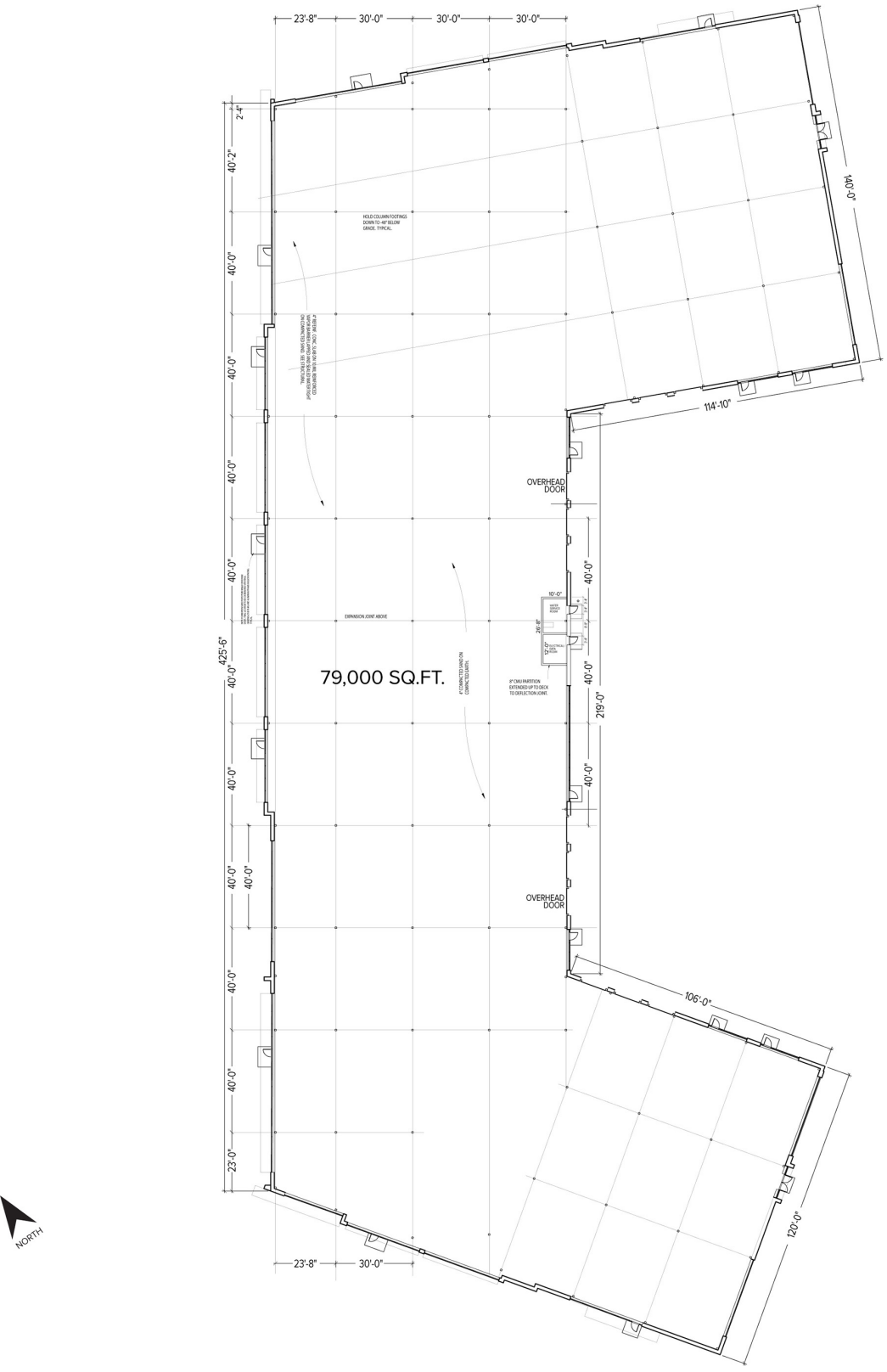
Information is subject to verification and no liability for errors or omissions is assumed. Price is subject to change and listing withdrawal.

3874 Research Park Dr. – Ann Arbor, Michigan

Hi-Tech For Sale or Lease

10,000-79,000
Square Feet
AVAILABLE

Floor Plan



For more information, please contact:
JAY CHAVEY
(248) 948 4196
jchavey@signatureassociates.com

SIGNATURE ASSOCIATES
One Towne Square, Suite 1200
Southfield, MI 48076
www.signatureassociates.com

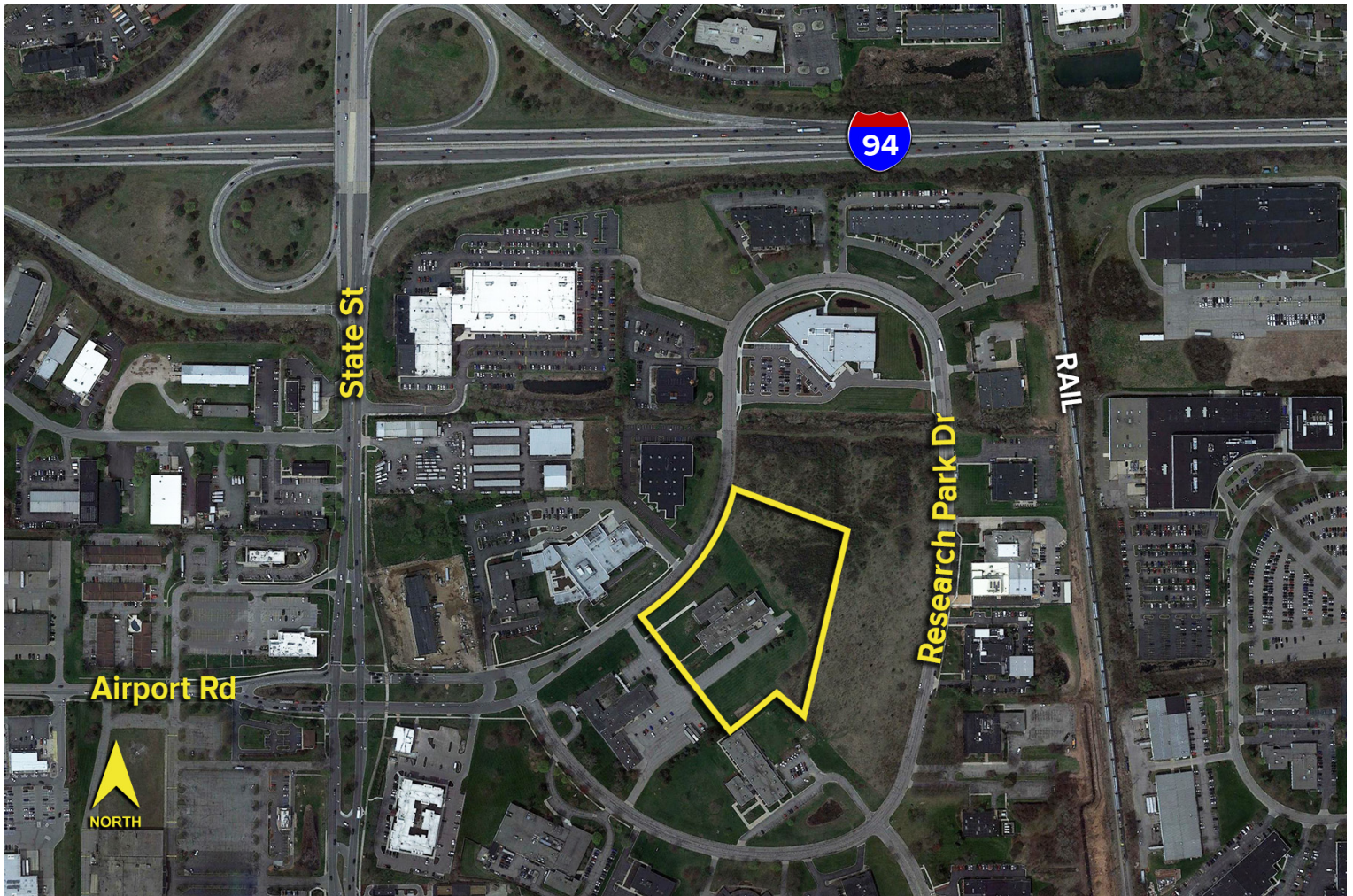
Information is subject to verification and no liability for errors or omissions is assumed. Price is subject to change and listing withdrawal.

3874 Research Park Dr. – Ann Arbor, Michigan

Hi-Tech For Sale or Lease

10,000-79,000
Square Feet
AVAILABLE

Aerial



For more information, please contact:

JAY CHAVEY
(248) 948 4196
jchavey@signatureassociates.com

SIGNATURE ASSOCIATES
One Towne Square, Suite 1200
Southfield, MI 48076
www.signatureassociates.com