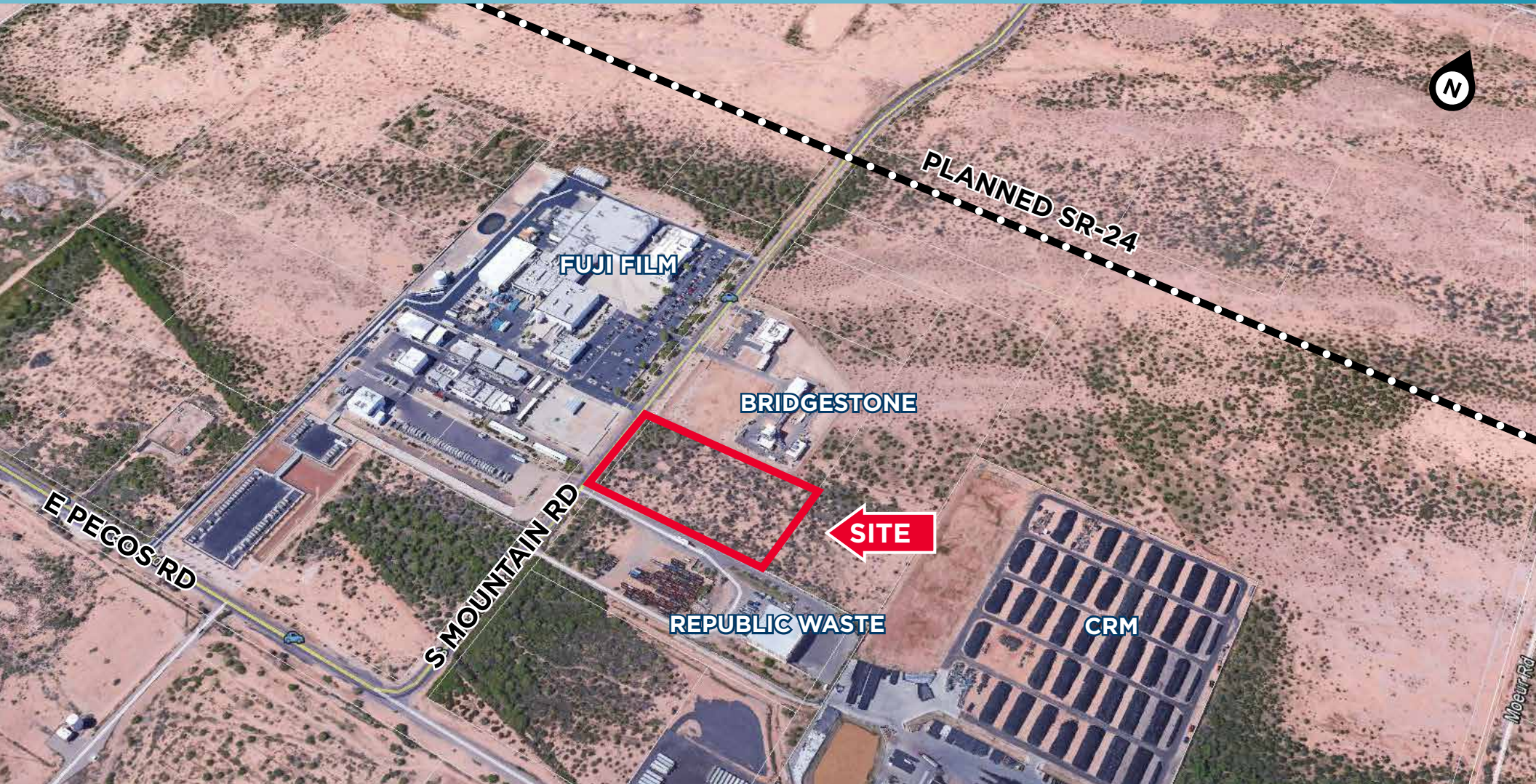




# Industrial Development/User Site

NNEC East Pecos Road & South Mountain Road / Mesa, Arizona / ±5.18 Acres



**Kent Hanson**  
Senior Director  
+1 602 224.4433  
kent.hanson@cushwake.com

**Pete Klees**  
Senior Director  
+1 602 224 4415  
pete.klees@cushwake.com

2555 E. Camelback Rd, Ste 400  
Phoenix, Arizona 85016  
ph: +1 602 954 9000 fx: +1 602 253 0528  
[cushmanwakefield.com](http://cushmanwakefield.com)



## Site Features

<b>Location:</b>	East Pecos Road & South Mountain Road, Mesa, AZ
<b>Land size:</b>	±5.18 Acres
<b>Zoning:</b>	AG with Industrial Overlay (Mostly GI zoning on surrounding parcels)
<b>Utilities:</b>	Electricity - SRP; Water/Sewer - City of Mesa; Gas - Southwest Gas
<b>Dimensions:</b>	350 ft x 650ft
<b>Parcel #:</b>	304-34-036D
<b>Price:</b>	\$5.00/SF
<b>Other:</b>	Close proximity to SR-24 and Loop-202



**Kent Hanson**  
Senior Director  
+1 602 224.4433  
kent.hanson@cushwake.com

**Pete Klees**  
Senior Director  
+1 602 224 4415  
pete.klees@cushwake.com

2555 E. Camelback Rd, Ste 400  
Phoenix, Arizona 85016  
ph: +1 602 954 9000 fx: +1 602 253 0528  
**cushmanwakefield.com**