

LEASE**OFFICE****LEASE RATE**

\$18.00 SF/YR - NNN

AVAILABLE SF

4,793 SF

Excellent opportunity to lease a modern 4,793 SF office space in Zionsville. Located at the northeast corner of 106th and Main Streets, this thriving office building is immediately south of Zionsville's historic downtown village.

- + 4,793 SF Available
- + Modern, Efficient Floor Plan
- + Curbside Parking
- + Building Signage Available

in **tw** **f** **ig** **v** **#growIndiana****TOM OSBORNE, SIOR**

Principal

O 317.663.6543

C 317.258.0179

tom.osborne@rcre.com

BETH PATTERSON

Principal & Director of Retail Services

O 317.663.6558

C 317.514.8454

beth.patterson@rcre.com

KIM HARTMAN, CPM

Senior Vice President

O 317.663.6562

C 317.716.5895

kim.hartman@rcre.com

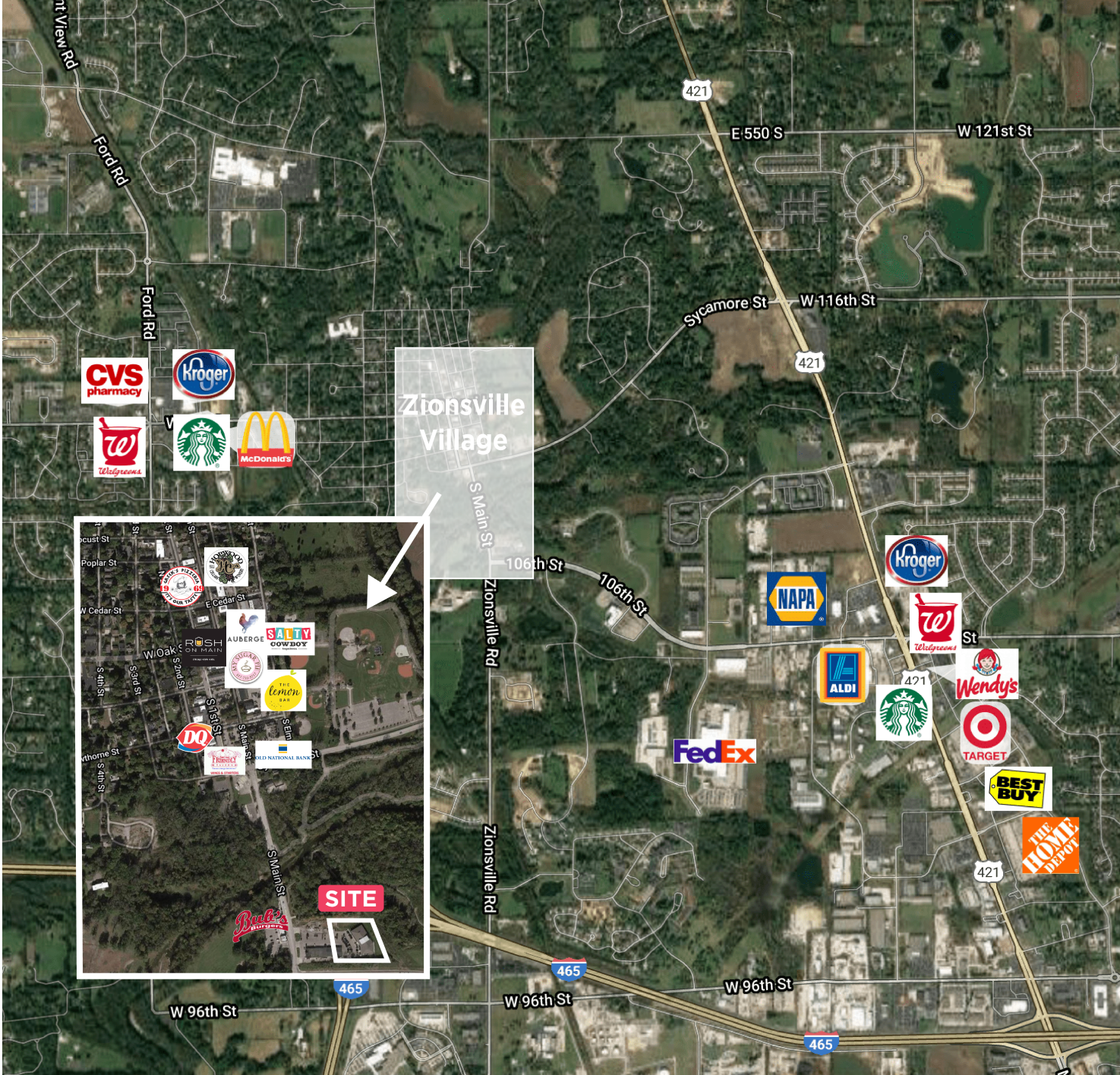
SOUTH VILLAGE OF ZIONSVILLE - EAST

625 SOUTH MAIN STREET, ZIONSVILLE, IN 46077



SOUTH VILLAGE OF ZIONSVILLE - EAST

625 SOUTH MAIN STREET, ZIONSVILLE, IN 46077



SOUTH VILLAGE OF ZIONSVILLE - EAST

625 SOUTH MAIN STREET, ZIONSVILLE, IN 46077

