

FOR LEASE



HARBOR PLACE

470 HWY 96 W ● SHOREVIEW, MN 55126

- 732 SF AVAILABLE
- OPERABLE WINDOWS
- ATTRACTIVE OFFICE BUILD OUTS
- SUPERB ACCESS TO HWY 96 BETWEEN 35E & 35W
- MULTI-TENANT CAMPUS SETTING
- ILLUMINATED MONUMENT SIGNAGE AVAILABLE
- EXTENSIVE LANDSCAPING
- AREA AMENITIES INCLUDE: HOTELS, NUMEROUS RETAIL STORES, GAS STATIONS & RESTAURANTS

CONTACT:

WWW.ESSENCEREALESTATE.COM

JEFF NORDNESS
jeff@essencerealestate.com
651-341-5044

HARBOR PLACE

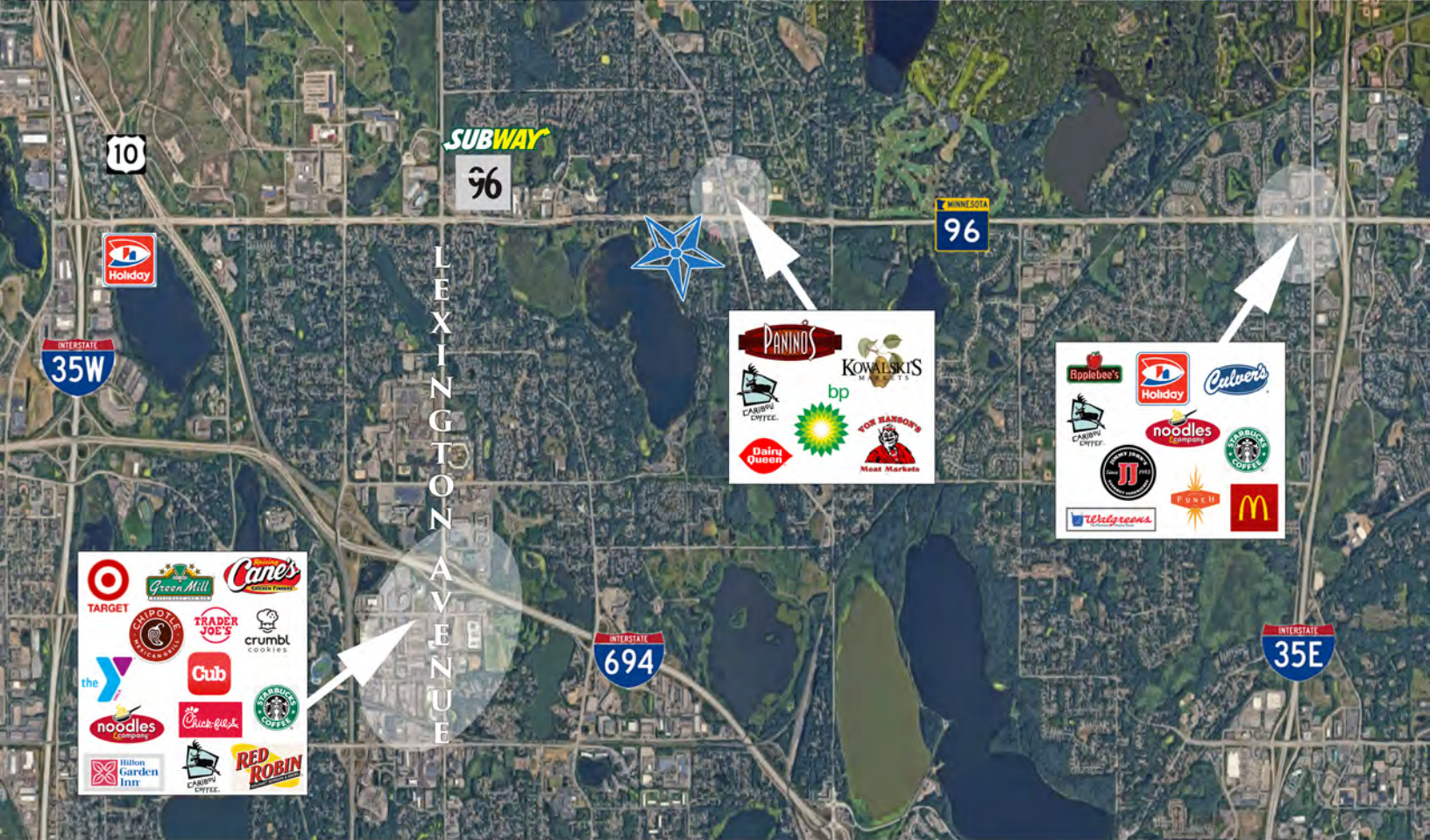
470 HWY 96 W • SHOREVIEW, MN 55126

BUILDING DETAILS:

OFFICE NET RENT: \$13.50 SF
2023 EST. OP. EXP. \$ 9.21 SF

SUITE 180 AVAILABLE 732 SF

APPROX. \$1,385.30
A MONTH



EXCELLENT LOCATION IN SHOREVIEW

ERSI

ESSENCE
REAL ESTATE
SERVICES INC.

JEFF NORDNESS

651-341-5044

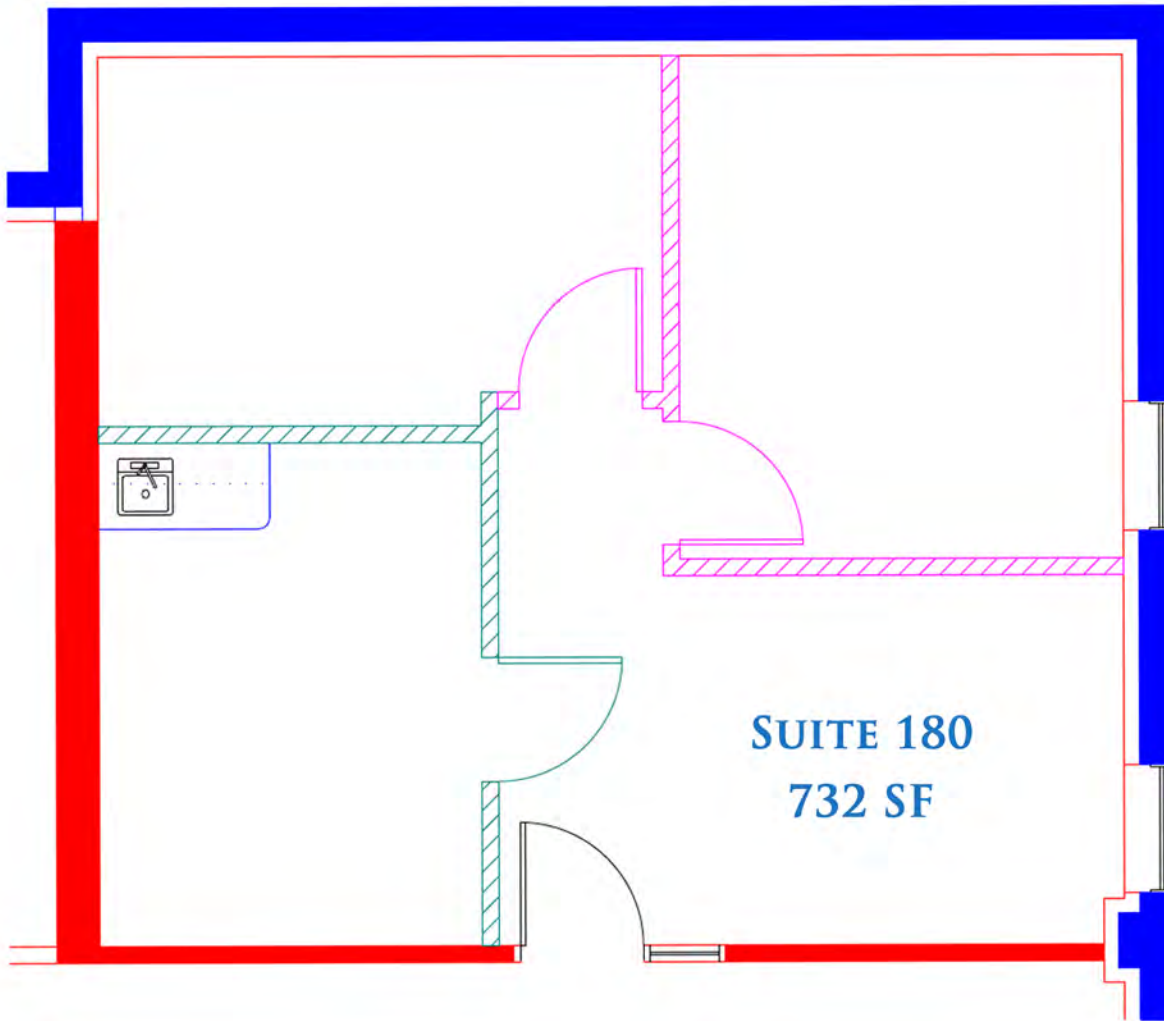
jeff@essencerealestate.com

COMMERCIAL REAL ESTATE SINCE 1990

OFFICE: 651-482-1871

HARBOR PLACE

470 HWY 96 W ● SHOREVIEW, MN 55126



APPROX.
\$1,385.30
A MONTH

SUITE 180
732 SF



ERSI

ESSENCE
REAL ESTATE
SERVICES INC.

COMMERCIAL REAL ESTATE SINCE 1990

JEFF NORDNESS

651-341-5044

jeff@essencerealestate.com

OFFICE: 651-482-1871