



TRADEMARK
PROPERTIES

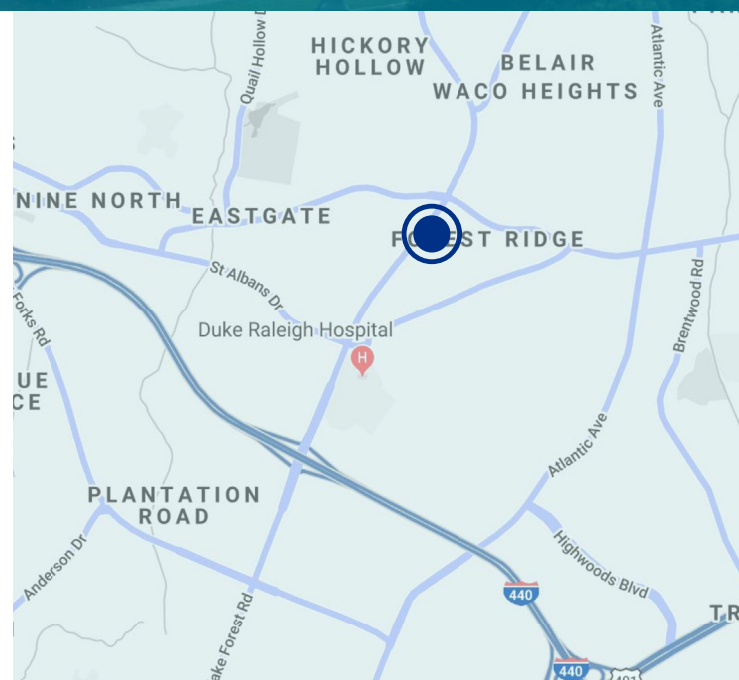
**SUITE 302: 1,483 SF
OFFICE SPACE FOR LEASE**

GALLERY PARK II
4020 WAKE FOREST ROAD
RALEIGH, NC 27609



PROPERTY HIGHLIGHTS

- 31,352 SF three-story brick and glass office building
- Suite 302: 1,483 SF – available June 1, 2019
- \$18.50/SF, Full Service
- Just north of Duke Raleigh Hospital and North Raleigh Hilton
- Recently renovated common areas
- Very professional tenant mix
- Abundant free surface parking
- Four offices, kitchen, and reception area



FRED DICKENS fdickens@trademarkproperties.com 919.227.5508 direct 919.673.4775 mobile

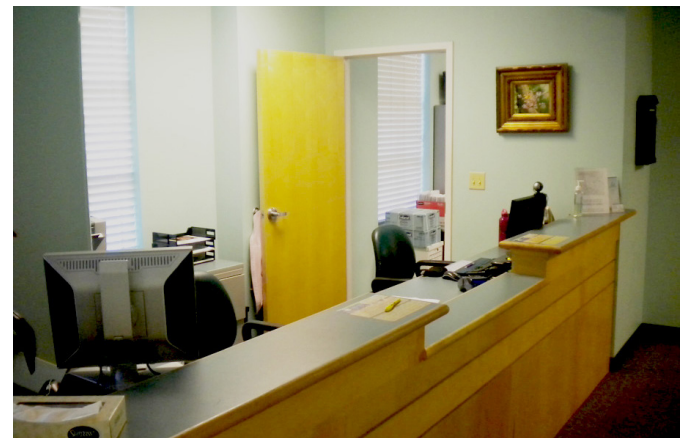
1001 Wade Avenue, Suite 300, Raleigh, NC 27605 • trademarkproperties.com • 919.782.5552

NEARBY RETAIL



AREA HIGHLIGHTS

- Excellent access to I-440 Beltline, less than one mile away
- Convenient to downtown Raleigh
- Numerous retail and restaurant options nearby
- 48,000 annual average daily traffic (NC DOT 2017)



ASKING RATE
\$18.50/SF, Full Service

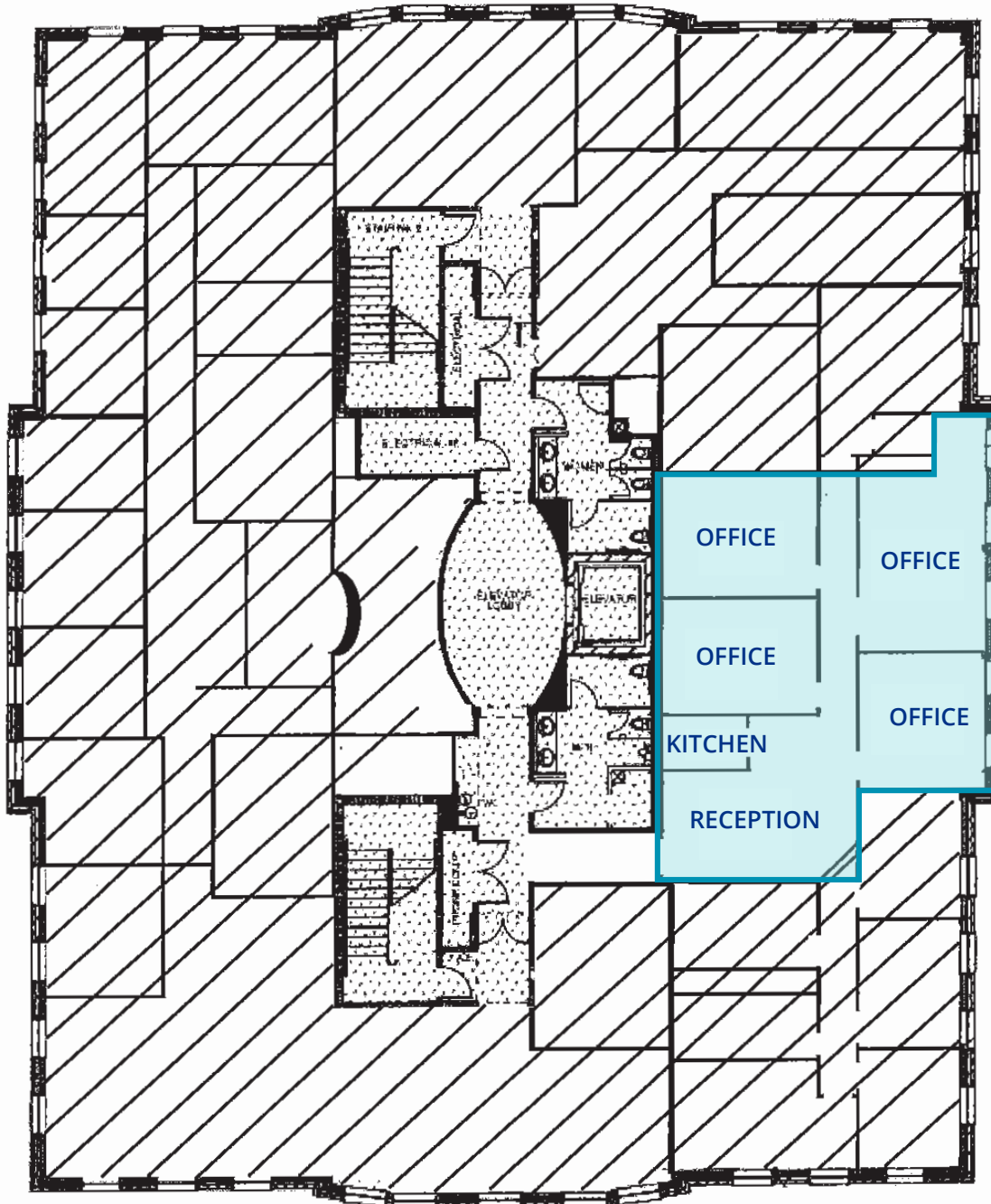
FRED DICKENS

fdickens@trademarkproperties.com
919.227.5508 direct 919.673.4775 mobile

The information contained herein was obtained from sources believed reliable; however, TradeMark Properties makes no guarantees, warranties, or representations as to the completeness or accuracy thereof. The presentation of this property is submitted subject to errors, omissions, changes of price or conditions prior to sale or lease, or withdrawal without notice.

SUITE 302: 1,483 SF

WAKE FOREST ROAD



PARKING LOT

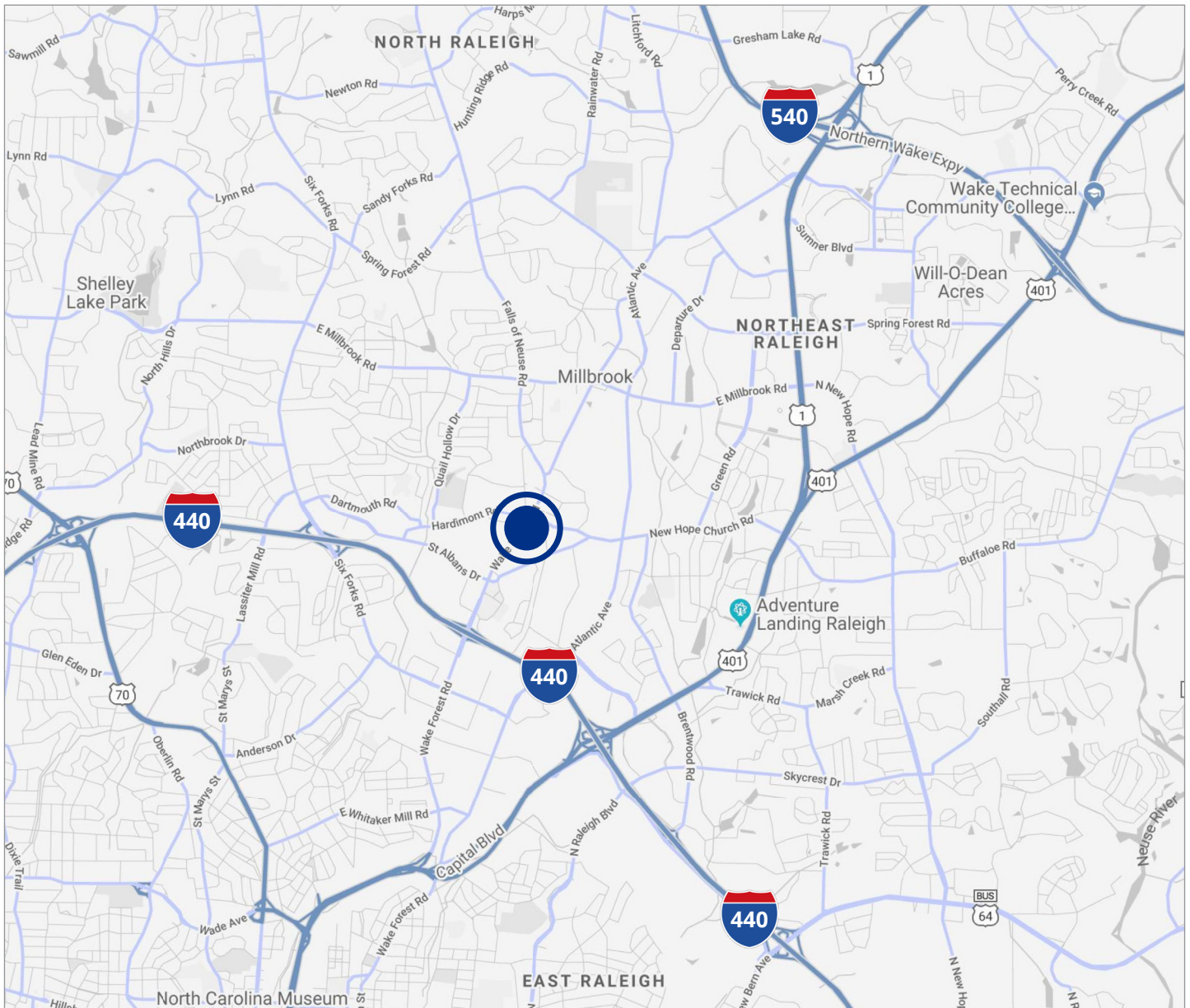
FRED DICKENS

fdickens@trademarkproperties.com

919.227.5508 direct 919.673.4775 mobile

The information contained herein was obtained from sources believed reliable; however, TradeMark Properties makes no guarantees, warranties, or representations as to the completeness or accuracy thereof. The presentation of this property is submitted subject to errors, omissions, changes of price or conditions prior to sale or lease, or withdrawal without notice.

LOCATION MAP



FRED DICKENS

fdickens@trademarkproperties.com
919.227.5508 direct 919.673.4775 mobile