

FOR SALE

VACANT INDUSTRIAL LAND

KISSIMMEE, FL 34741



OVERVIEW:

This offering consists of a 1.84 acre lot located in the Kissimmee Executive Park, a 100 acre business park that is adjacent to the Kissimmee Gateway Airport. The property has 200' of frontage on two paved roads, Dyer Blvd and Collins Drive. The property is 400' deep.

PROPERTY INFORMATION:

ADDRESS: 1020 Dyer Boulevard
Kissimmee, FL 34741

SITE SIZE: Approximately 1.84 acres

RETENTION: On-site retention

ZONING: Mixed Use Planned Urban Development,
Industrial

UTILITIES: Utilities are to the site
Power - Kissimmee Utility Authority
Water & Sewer - Toho Water Authority

DUE DILIGENCE

INFORMATION: Survey

FINANCIAL INFORMATION:

PRICE: \$400,000

PRICE PER ACRE: \$217,391

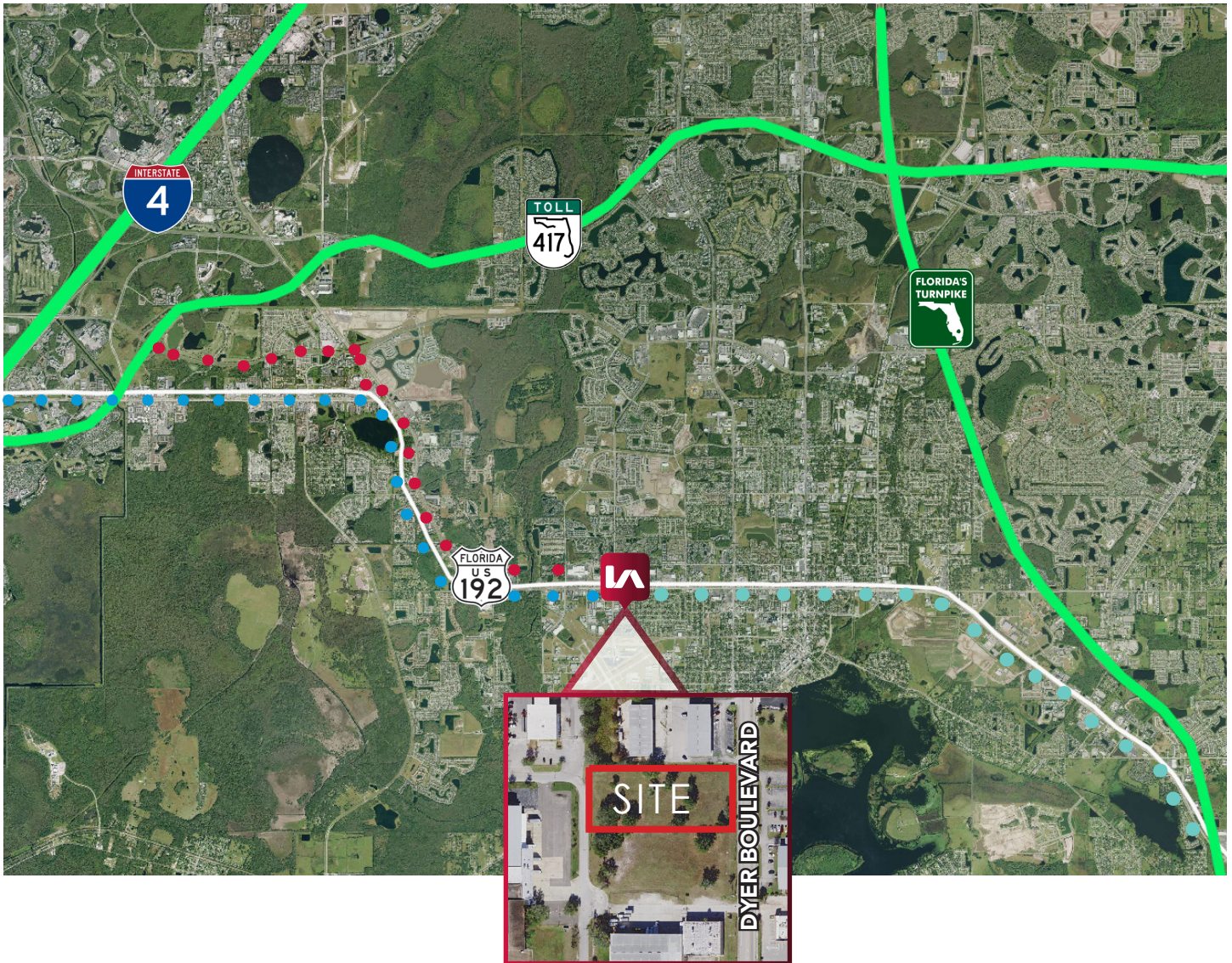
PLEASE CONTACT:

William "Bo" Bradford, CCIM, SIOR
Co-President/Principal
bbradford@lee-associates.com
D 321.281.8502

FOR SALE

VACANT INDUSTRIAL LAND

KISSIMMEE, FL 34741



TRAVEL DISTANCES FROM SITE:

To Interstate 4 (I-4):	●	8.2 Miles
To 417:	●	6.8 Miles
To Florida Turnpike:	●	8.2 Miles

PLEASE CONTACT:

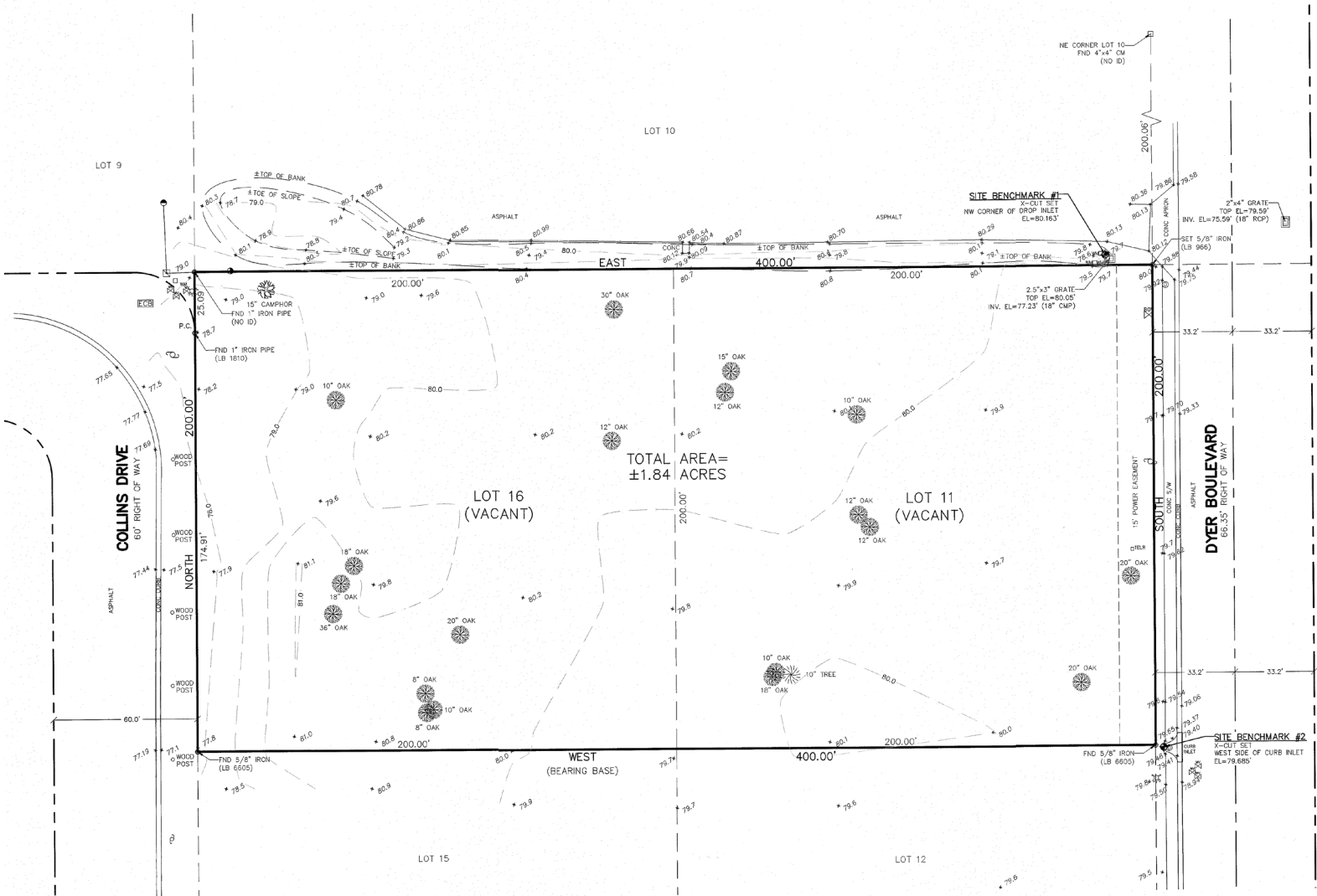
William "Bo" Bradford, CCIM, SIOR
Co-President/Principal
bbradford@lee-associates.com
D 321.281.8502

FOR SALE

VACANT INDUSTRIAL LAND

KISSIMMEE, FL 34741

PROPERTY SURVEY



PLEASE CONTACT:

William "Bo" Bradford, CCIM, SIOR
Co-President/Principal
bbradford@lee-associates.com
D 321.281.8502