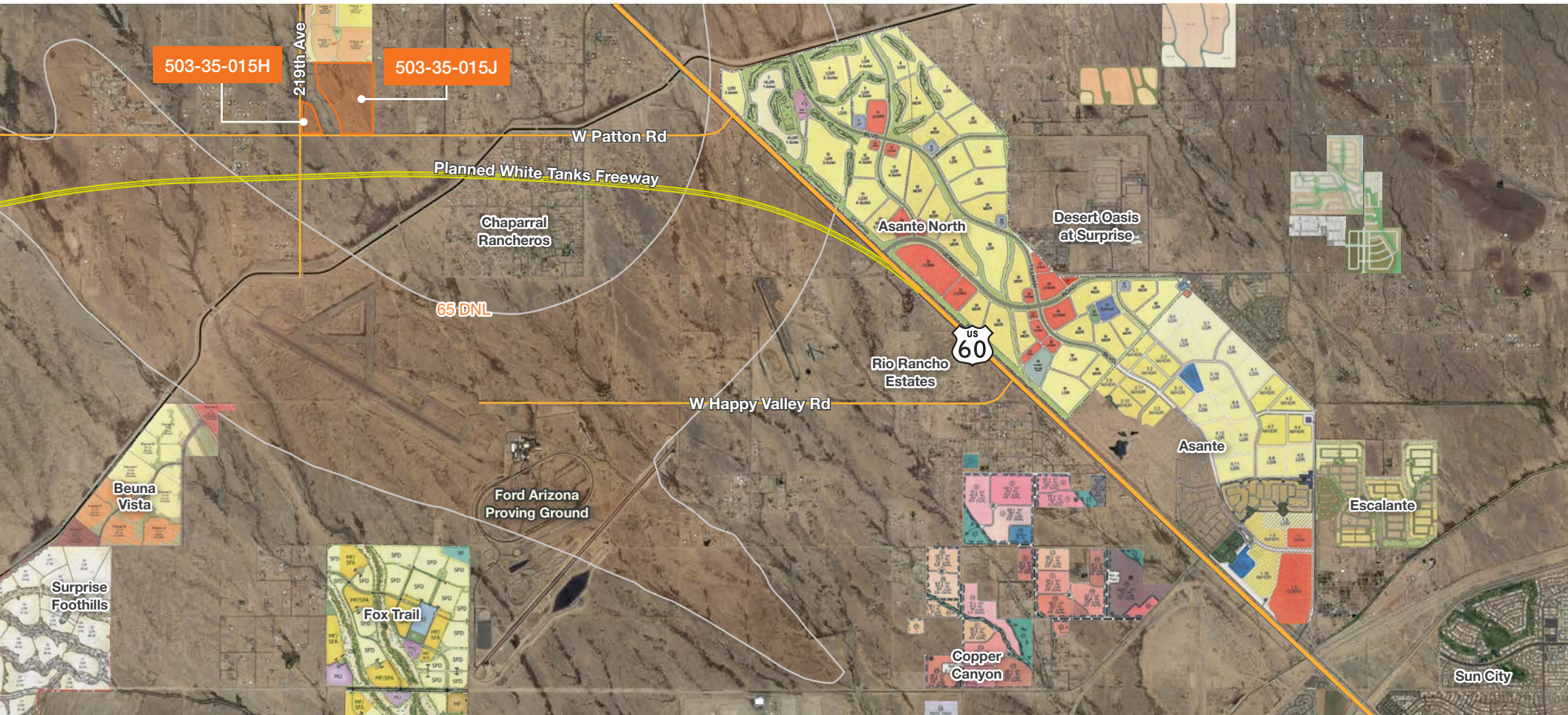


# 215th Ave and Patton Rd NWC

Maricopa County, AZ



FOR SALE

±112 Acres on 215th Avenue and Patton Road

**Brian Rosella**  
602.513.5103  
brosella@kiddermathews.com

**Chris Medill, MRED**  
602.513.5108  
cmedill@kiddermathews.com

[kiddermathews.com](http://kiddermathews.com)

**km** Kidder  
Mathews

# 215th Ave and Patton Rd NWC

Maricopa County, AZ

## Features

<b>LAND</b>	±112 acres
<b>PRICE</b>	Submit
<b>ZONING</b>	RU-43
<b>PARCEL</b>	503-35-015J, 503-35-015H

### PROPERTY HIGHLIGHTS

Path of growth

Flexible development options

Outside of AUX 1 Noise Contour Lines

Proximity to White Tanks Freeway (planned)

Proximity to successful custom home subdivision



**Brian Rosella**  
602.513.5103  
brosella@kiddermathews.com

**Chris Medill, MRED**  
602.513.5108  
cmedill@kiddermathews.com

[kiddermathews.com](http://kiddermathews.com)

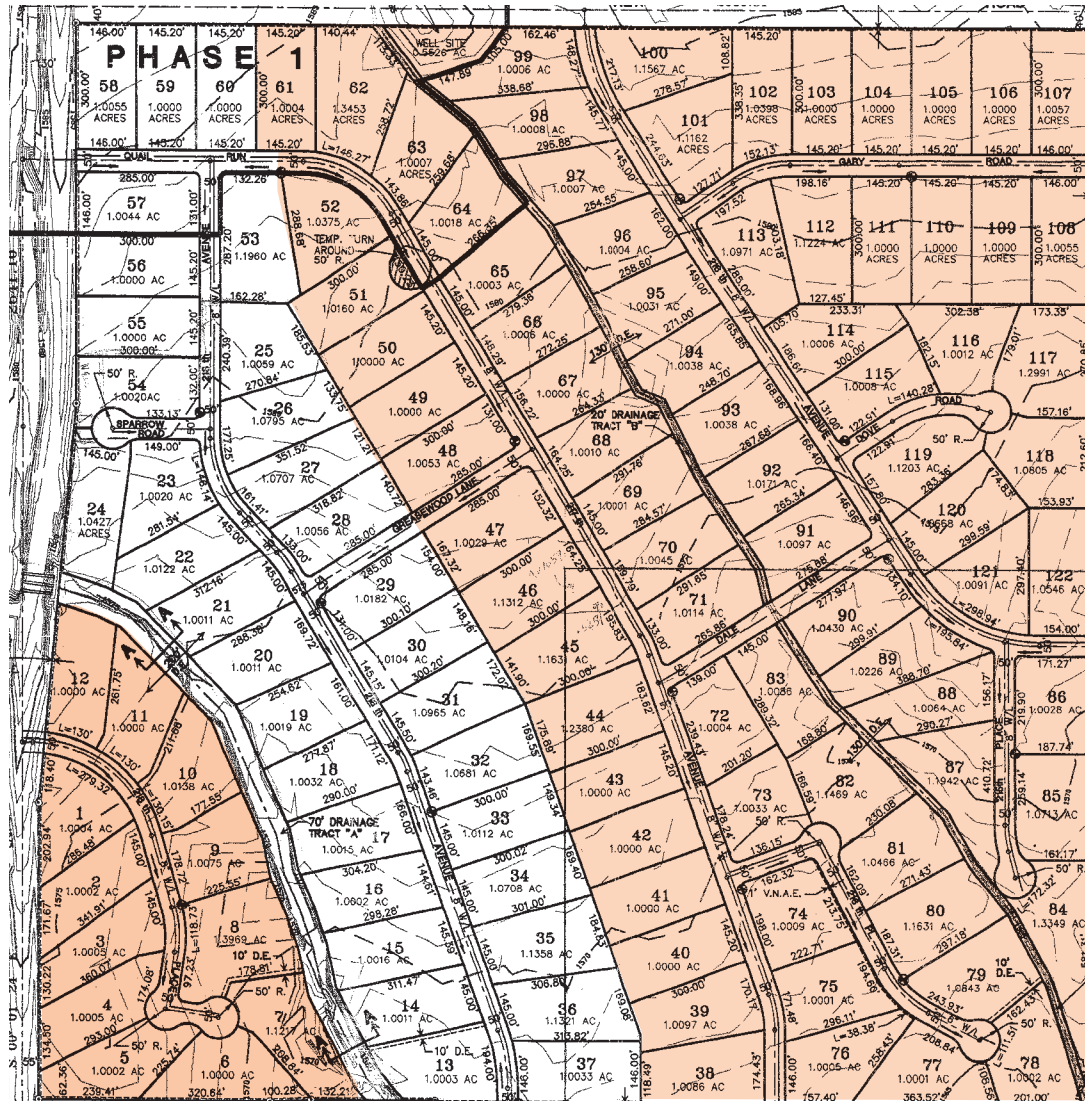
**km** Kidder  
Mathews

This information supplied herein is from sources we deem reliable. It is provided without any representation, warranty or guarantee, expressed or implied as to its accuracy. Prospective Buyer or Tenant should conduct an independent investigation and verification of all matters deemed to be material, including, but not limited to, statements of income and expenses. Consult your attorney, accountant, or other professional advisor.

# 215th Ave and Patton Rd NWC

Maricopa County, AZ

PRELIMINARY PLAT (EXPIRED)



Brian Rosella  
602.513.5103  
brosella@kiddermathews.com

Chris Medill, MRED  
602.513.5108  
cmedill@kiddermathews.com

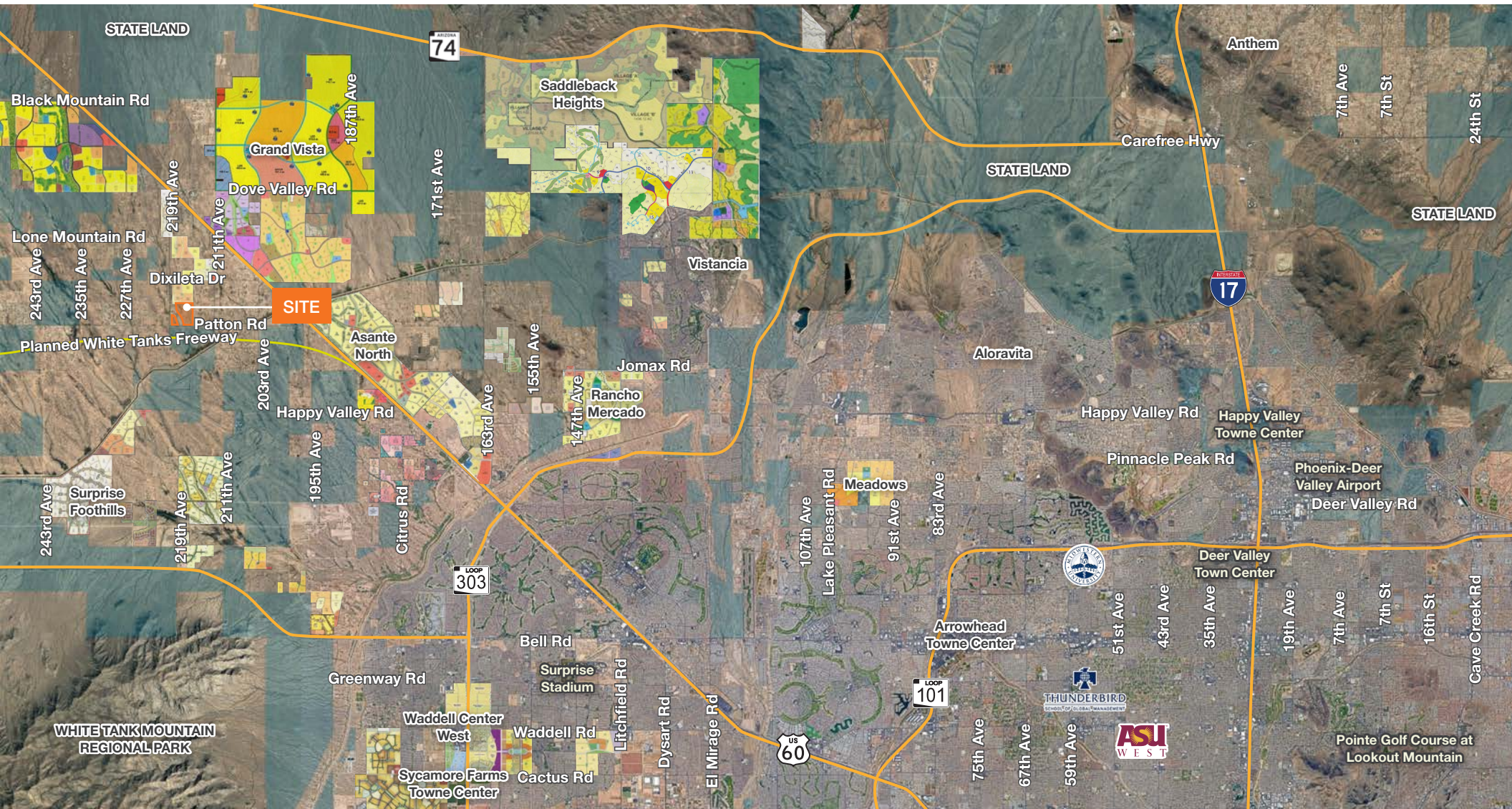
[kiddermathews.com](http://kiddermathews.com)



This information supplied herein is from sources we deem reliable. It is provided without any representation, warranty or guarantee, expressed or implied as to its accuracy. Prospective Buyer or Tenant should conduct an independent investigation and verification of all matters deemed to be material, including, but not limited to, statements of income and expenses. Consult your attorney, accountant, or other professional advisor.

# 215th Ave and Patton Rd NWC

Maricopa County, AZ



**Brian Rosella**  
602.513.5103  
brosella@kiddermathews.com

**Chris Medill, MRED**  
602.513.5108  
cmedill@kiddermathews.com

[kiddermathews.com](http://kiddermathews.com)



This information supplied herein is from sources we deem reliable. It is provided without any representation, warranty or guarantee, expressed or implied as to its accuracy. Prospective Buyer or Tenant should conduct an independent investigation and verification of all matters deemed to be material, including, but not limited to, statements of income and expenses. Consult your attorney, accountant, or other professional advisor.