



OFFICE SPACE **FOR LEASE**

Safeco Plaza

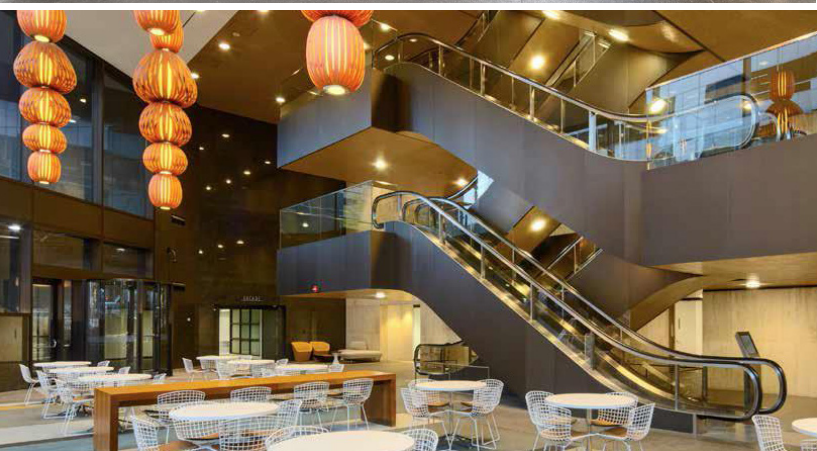
SPECTACULAR 360° VIEWS 47 FLOORS ABOVE THE CITY

A rare opportunity to lease the full top floor – 20,281 RSF of space

The building's central location provides convenient access to I-5 and gives it a perfect 100 transit score, making commuting to work easy.

1001 4th Avenue | Seattle, WA 98154





BUILDING FEATURES

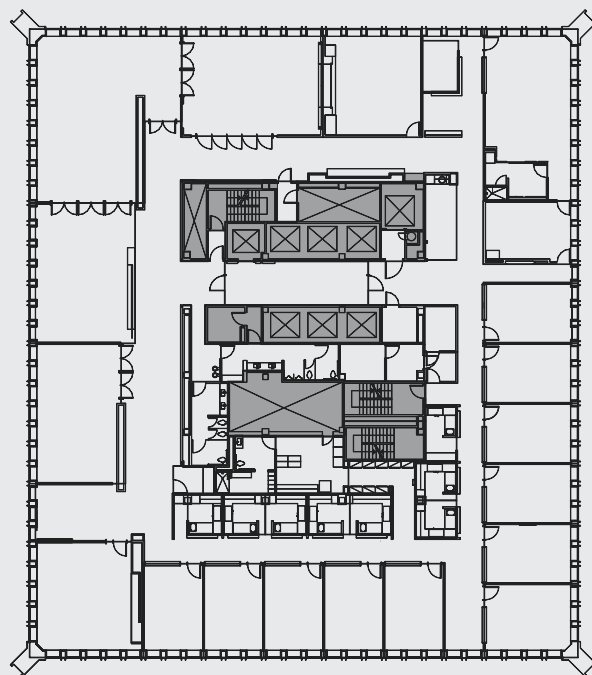
LOCATION

Spanning an entire city block, Safeco Plaza is located in the middle of the Seattle CBD and offers tenants spectacular 360-degree views of the city and Puget Sound.

AMENITIES

- + \$100 million has been invested in fully modernizing the building inside and out.
- + Full suite of tenant amenities include a state-of-the-art conference center and newly upgraded fitness center.
- + Multiple quick service food retailers as well as a Bank of America branch on-site.
- + Modern new lobby seating areas and decor.
- + Outdoor plazas and courtyards – featuring the Seattle Art Museum's Henry Moore sculpture.

FLOOR 47 | 20,281 RSF



CONTACT

Lisa Stewart
+1 206 607 1786
lisa.stewart@am.jll.com

Jim Allison
+1 206 607 1787
jim.allison@am.jll.com

Jones Lang LaSalle Brokerage, Inc.

DISCLAIMER © 2019 Jones Lang LaSalle IP, Inc. All rights reserved. All information contained herein is from sources deemed reliable; however, no representation or warranty is made to the accuracy thereof.



jll.com/seattle