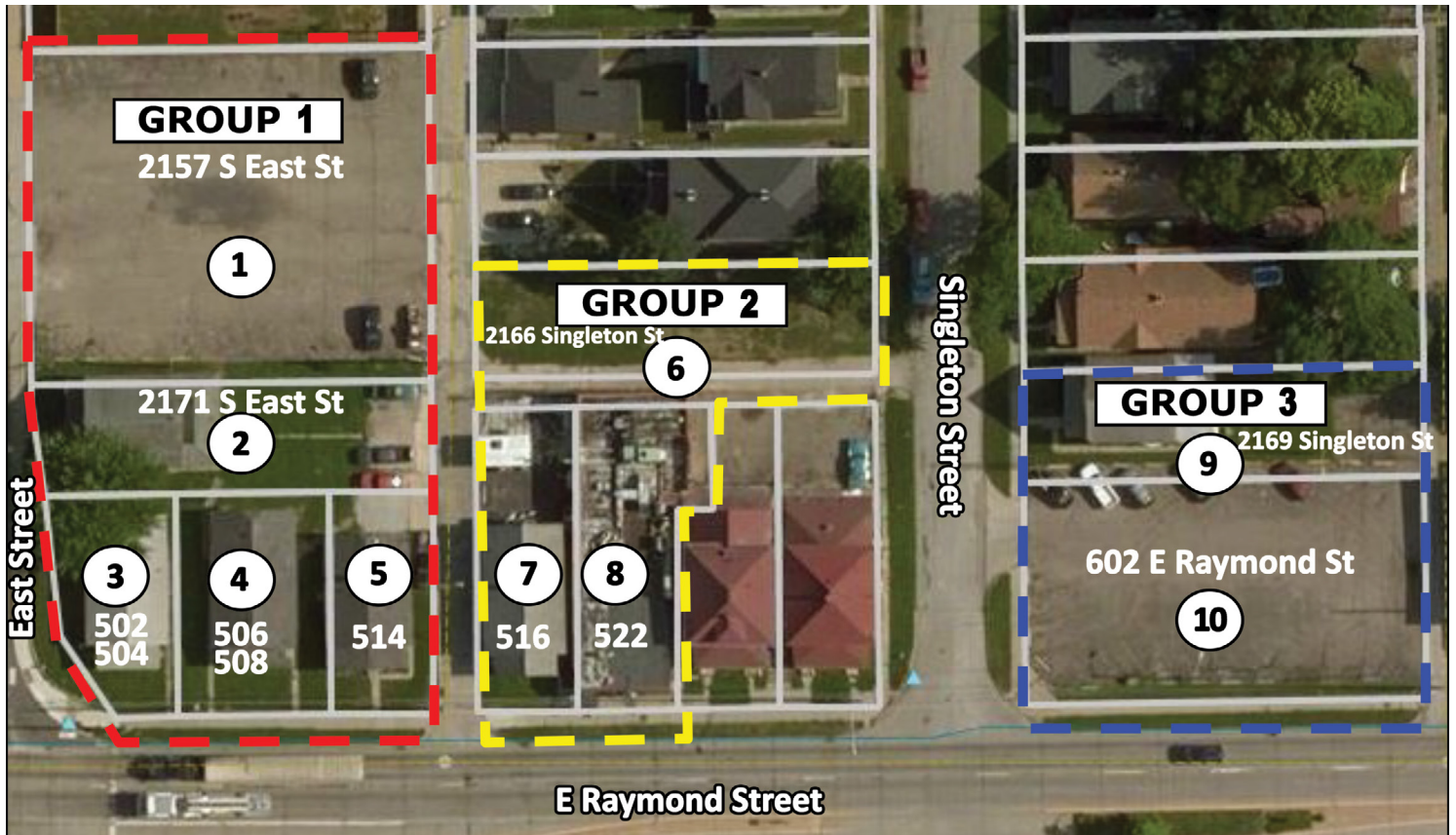


FOR SALE

Redevelopment Opportunity / Multi Family Investment Property

Raymond Street, Indianapolis, IN 46203



Group 1 - 502-514 E Raymond, 2157 S East Street, 2171 S East Street

- .35 ac Parking lot
- 1 Single dwelling / 2 double dwellings
- All 5 parcels sold together as investment property or redevelopment opportunity on hard corner
- Zoned C-3
- Total acreage .68

TRAFFIC COUNTS
Raymond Street - 18,208 ADT
S East Street - 7,100 ADT

Group 2 - 522 E Raymond

- 7 Unit multi-family studio apartments - 6 fully leased
- 1 Single Family rental - leased
- .12 acre vacant lot
- Total acreage .29

FOR RENT ROLL & PRICING CONTACT

Jodi Milto
jmilto@mccreapg.com

Group 3 - 602 E Raymond & 2169 Singleton St

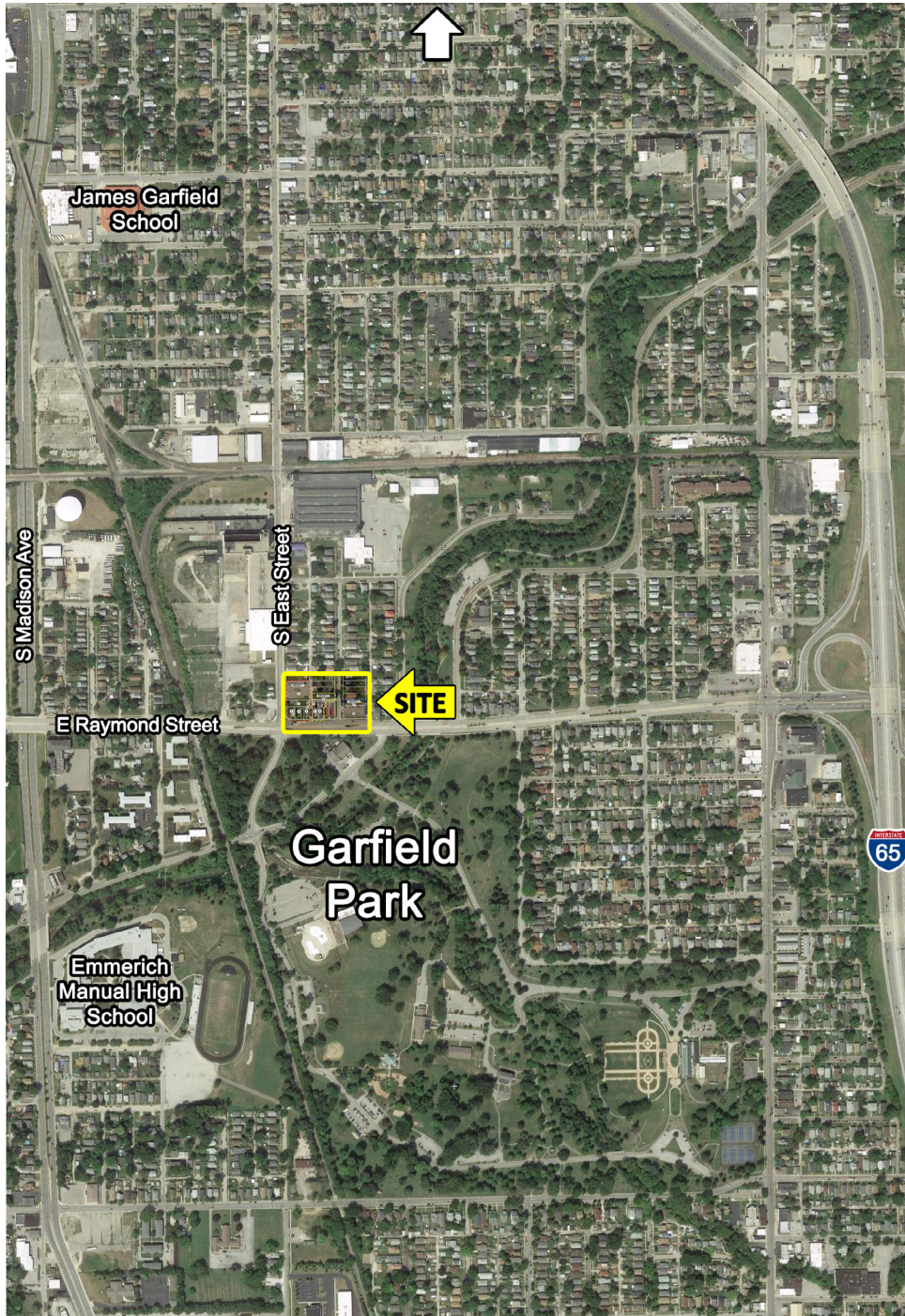
- 1,844 sf Single family dwelling - leased
- Zoned C-S provides all permitted uses in C-1, C-2 & C-3
- Total acreage .35

Each group can be purchased separately or as a 3 group package.

Located across from Garfield Park, 1/2 mile from I-65 and 1 mile south of Lilly.

FOR SALE

Redevelopment Opportunity / Multi Family Investment Property



TRAFFIC COUNTS

Raymond Street - 18,208 ADT

CONTACT

Jodi Milto

jmilto@mccreapg.com

MARKET DEMOGRAPHICS

Radius	Population	Income	Households	Daytime Pop
1 Mile	13,303	\$45,546	5,208	4,106
3 Mile	88,261	\$56,264	36,148	138,087
5 Mile	227,375	\$53,301	93,837	248,588