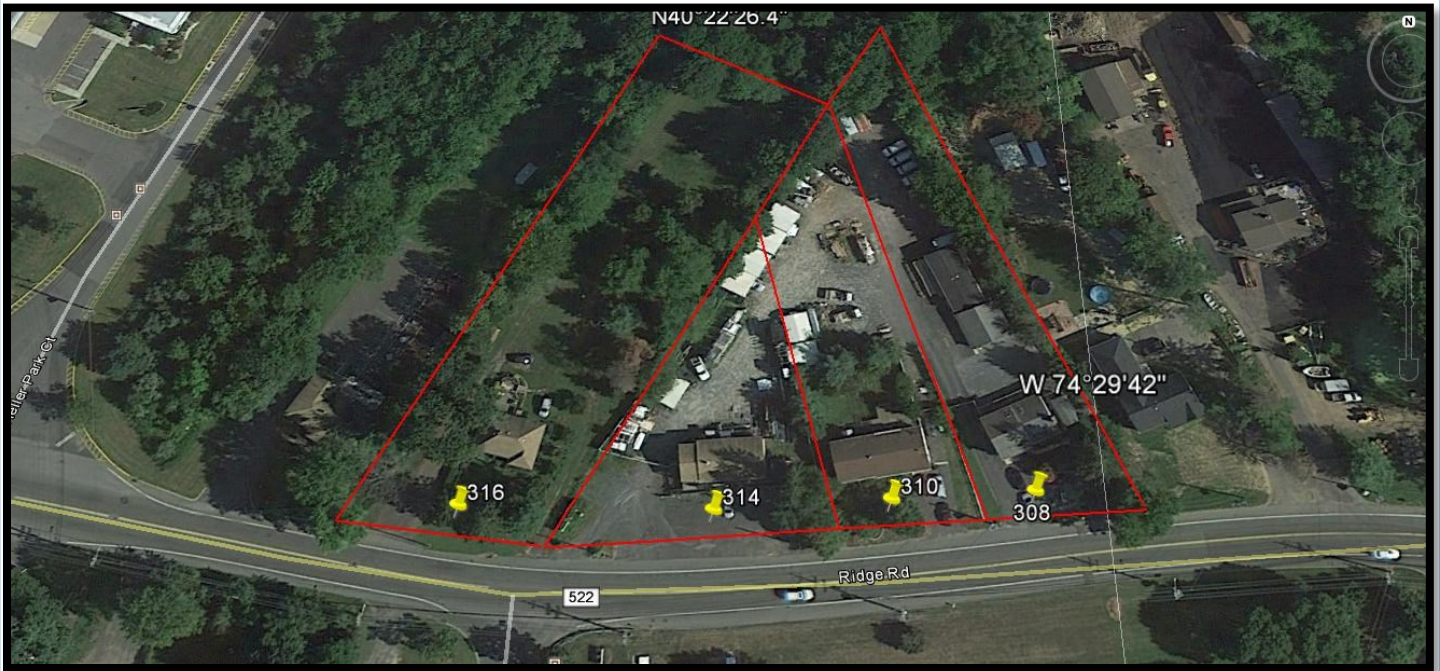


308, 310, 314 & 316 Ridge Road

Dayton, NJ

PRESENTED BY:

LANCE BRAM COMMERCIAL BROKERAGE



AVAILABLE FOR SALE

- ◆ +/- 5 Acres
- ◆ Asking Price: \$ 2,275,000
- ◆ IU Zoned Commercial and Residential
- ◆ Outdoor Truck Parking Permissible
- ◆ Outdoor Storage Allowed
- ◆ Property Can Be Delivered Full Leased or Fully Vacant
- ◆ Ideal Uses: Affordable Housing, Trucking Company
- ◆ Direct Access to Route 130 and Exit 8A of the NJTPK

FOR MORE INFORMATION CONTACT EXCLUSIVE BROKERS:

Lance Bram
COMMERCIAL BROKERAGE
www.lancebram.com

GRACE LOCSIN
Cell: 609.495.5209
grace.locsin@lancebram.com

This information has been secured from sources we believe to be reliable. Accordingly, no warranty or representation, express or implied, is made to the accuracy of the information contained herein, and same submitted to errors, omissions, change of price, rental or other conditions, withdrawal notice, and to any special listing conditions imposed by our principals.