

# 71,246 SF

## Industrial Space For Lease



## Prologis Woodridge

10440 Woodward Avenue  
Woodridge, IL 60517 USA



### LOCATION

- Immediate expressway access via 4-way interchange at I-55 and Lemont Road.
- Easy access to I-355.
- Located in the Internationale Centre.

### FACILITY

- 159,258 SF building
- 71,246 SF available (divisible)
- ±5,571 SF office
- ±411 SF shipping office
- 9.0 acre site
- 30' clear height
- 10 exterior docks
- 2 drive-in doors
- 50' x 50' bays
- ESFR sprinkler

### ADVANTAGES AND AMENITIES

- Located in DuPage County

# 71,246 SF

## Industrial Space For Lease



### Lee & Associates

**Jeff Galante**  
jgalante@lee-associates.com  
ph +1 773 355 3007  
cell +1 630 363 7605  
9450 W Bryn Mawr  
Suite 550  
Rosemont, IL 60018 USA

### Lee & Associates

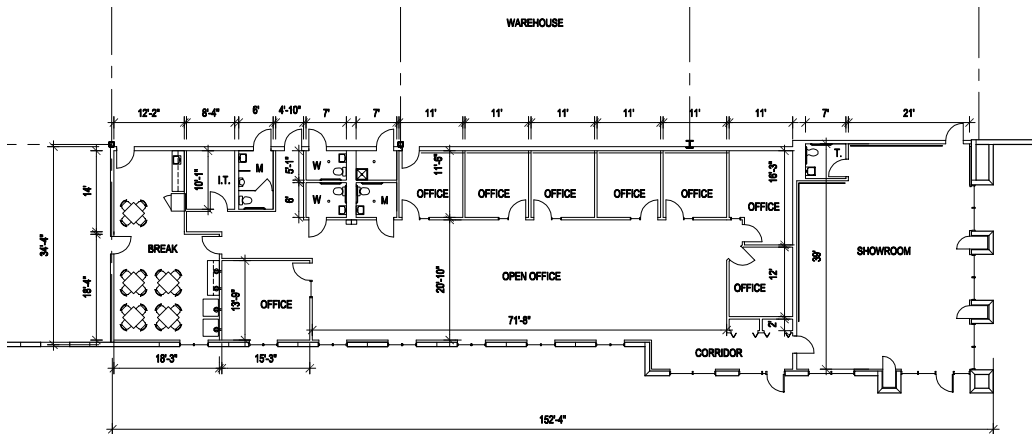
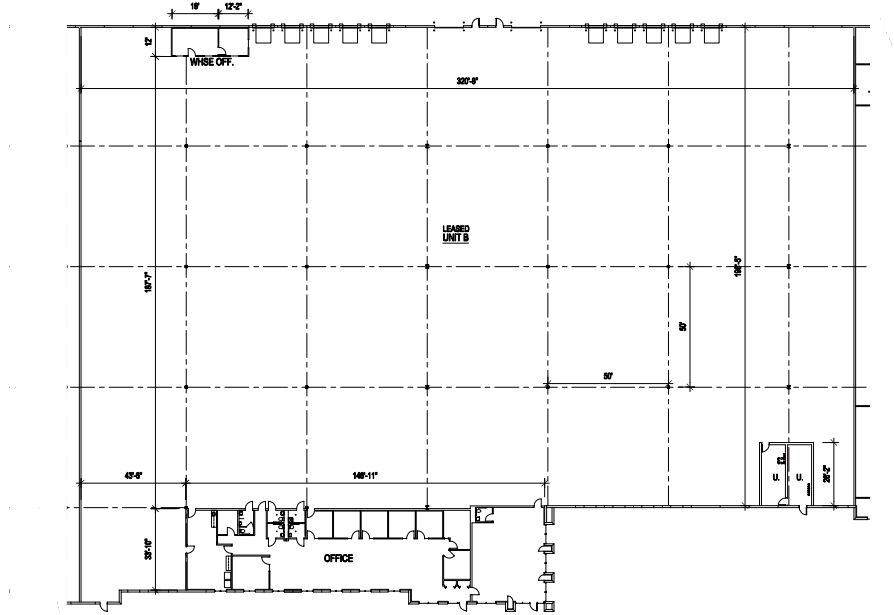
**Terry Grapenthin**  
tgrape@lee-associates.com  
ph +1 773 355 3042  
cell +1 708 275 1263  
9450 W Bryn Mawr  
Suite 550  
Rosemont, IL 60018 USA

### Prologis

**James Neswold**  
jneswold@prologis.com  
ph +1 847 292 3924  
cell +1 847 571 0592  
6250 N. River Road  
Suite 1100  
Rosemont, IL 60018 USA

# 71,246 SF

## Industrial Space For Lease



### Lee & Associates

Jeff Galante  
jgalante@lee-associates.com  
ph +1 773 355 3007  
cell +1 630 363 7605  
9450 W Bryn Mawr  
Suite 550  
Rosemont, IL 60018 USA

### Lee & Associates

Terry Grapenthin  
tgrape@lee-associates.com  
ph +1 773 355 3042  
cell +1 708 275 1263  
9450 W Bryn Mawr  
Suite 550  
Rosemont, IL 60018 USA

### Prologis

James Neswold  
jneswold@prologis.com  
ph +1 847 292 3924  
cell +1 847 571 0592  
6250 N. River Road  
Suite 1100  
Rosemont, IL 60018 USA