

OFFICE FOR LEASE

# DOWNTOWN LOFT STYLE SPACE

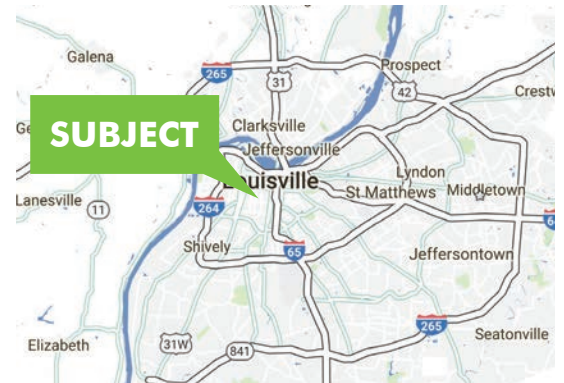
209 EAST MAIN STREET

Louisville, KY



## PROPERTY FEATURES

- + 8,500± SF available on floors 3,4 & 5
- + Future retail amenities on lower level & first floor
- + Thoroughbred Club located on the 2nd floor
- + 3rd floor "rooftop" garden/patio
- + Attached parking garage
- + Exciting location near Whiskey Row & Waterfront Park
- + Walkable to arena district
- + Signage & naming rights available for large anchor tenant
- + Dual elevators



## CONTACT US

**MICHAEL SOMERVELL**

Associate

+1 502 412 7659

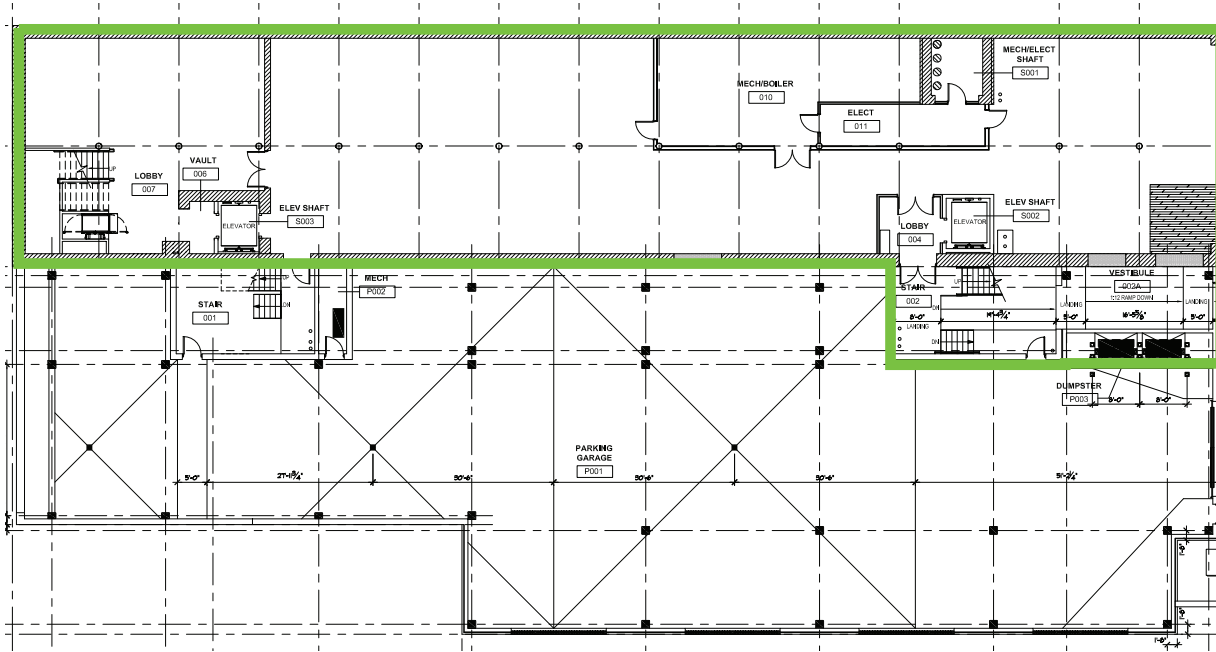
michael.somervell@cbre.com

[www.cbre.com/louisville](http://www.cbre.com/louisville)

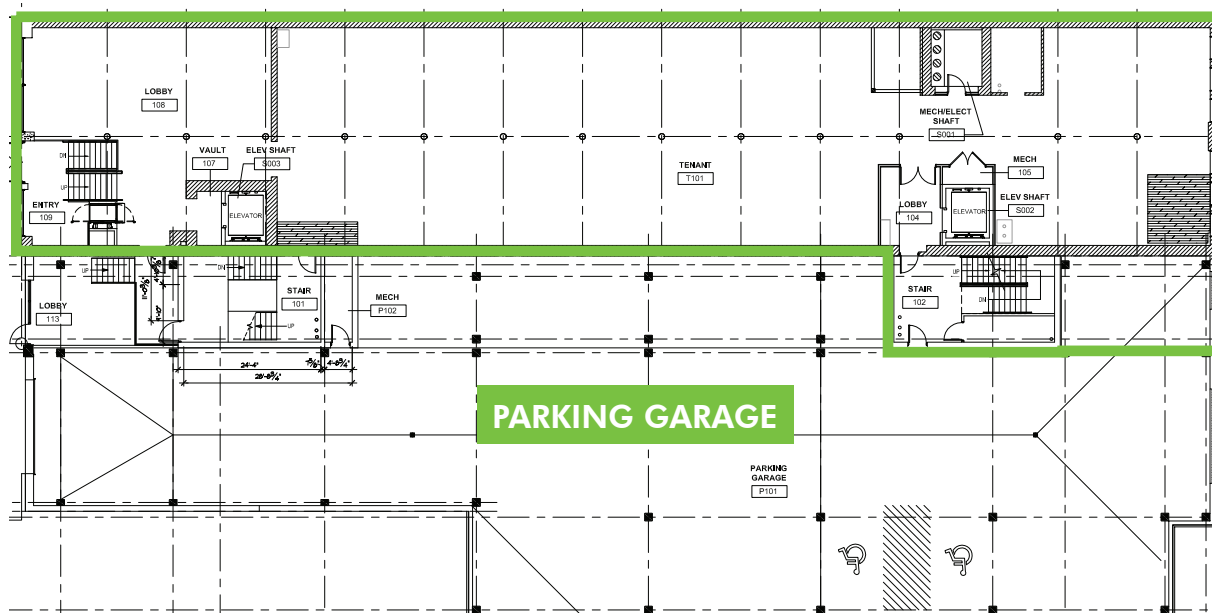
**CBRE**

# OFFICE/RETAIL FOR LEASE DOWNTOWN LOFT STYLE SPACE

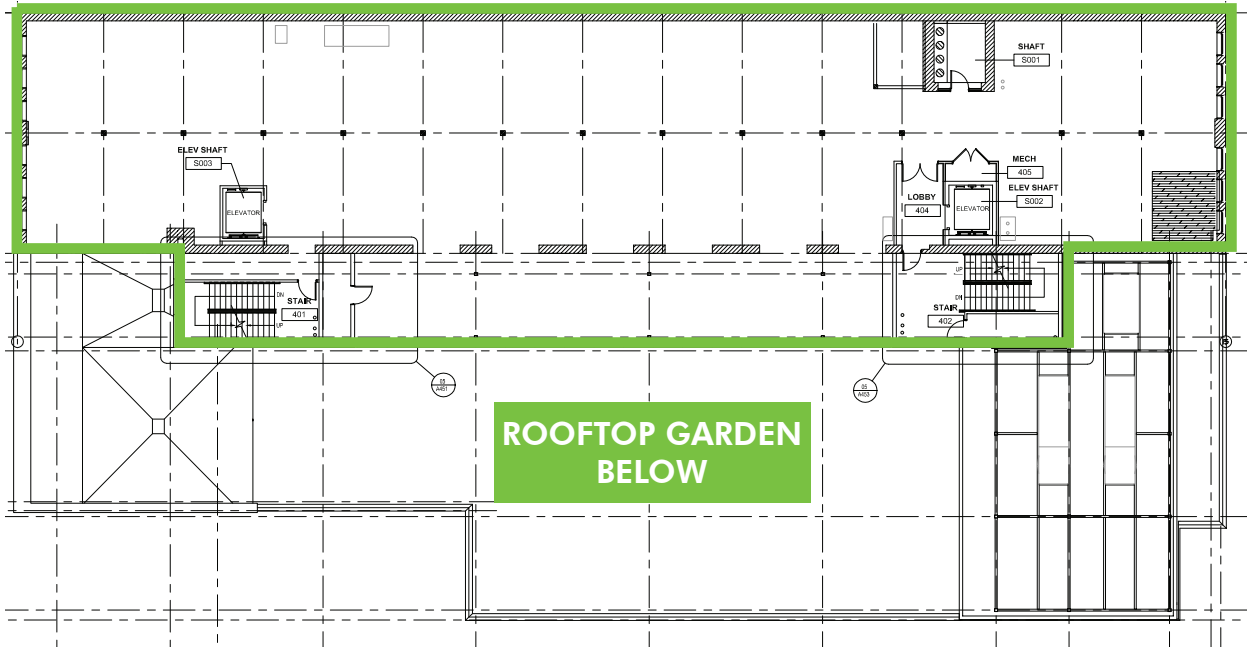
## BASEMENT - 4,538± SF



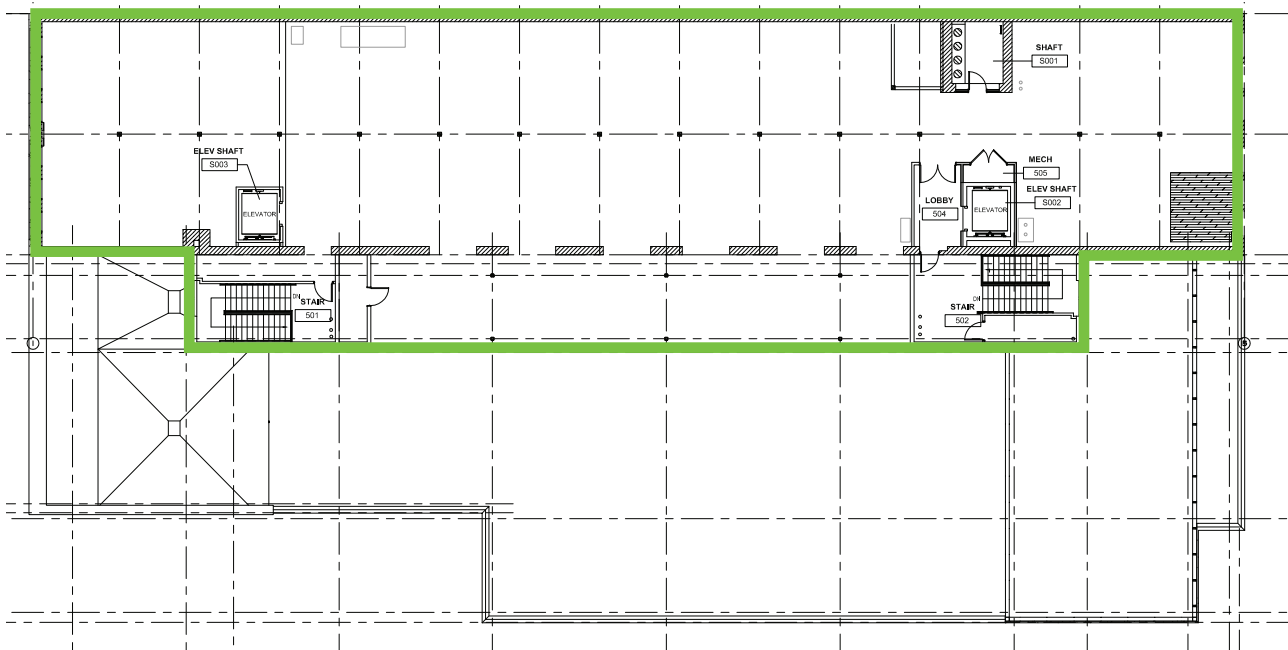
## FIRST FLOOR RETAIL - 5,460± SF



THIRD FLOOR OFFICE 8,500± SF



FOURTH FLOOR OFFICE 8,500± SF



OFFICE/RETAIL FOR LEASE  
**DOWNTOWN LOFT STYLE SPACE**

209  
**EAST MAIN STREET**  
 Louisville, KY



© 2019 CBRE, Inc. All rights reserved. This information has been obtained from sources believed reliable, but has not been verified for accuracy or completeness. You should conduct a careful, independent investigation of the property and verify all information. Any reliance on this information is solely at your own risk. CBRE and the CBRE logo are service marks of CBRE, Inc. All other marks displayed on this document are the property of their respective owners, and the use of such logos does not imply any affiliation with or endorsement of CBRE. Photos herein are the property of their respective owners. Use of these images without the express written consent of the owner is prohibited.