

405
NORTH KING STREET
THE RENAISSANCE CENTRE



A CONTEMPORARY MASTERPIECE

With a premiere location in Wilmington's Central Business District, **405 North King Street** tastefully blends period details with thoroughly modern upgrades to offer a complete trophy building experience.

THE
COMMONWEALTH
GROUP



405 NORTH KING STREET THE RENAISSANCE CENTRE

Building highlights:

- Eight-story, 155,000 s.f. Class A Trophy building
- 190-space parking facility
- Large, flexible floorplates (23,715 s.f. typical)
- Historic details and finishes with extensive high quality contemporary updates throughout
- Recently updated two-story atrium lobby
- State-of-the-art security systems
- High-speed elevators
- Ground floor retail amenities
- On-site restaurant
- Loading dock accessibility
- Building serviced by two separate power grids

Board room (sample build out)



Spacious high-end lobby



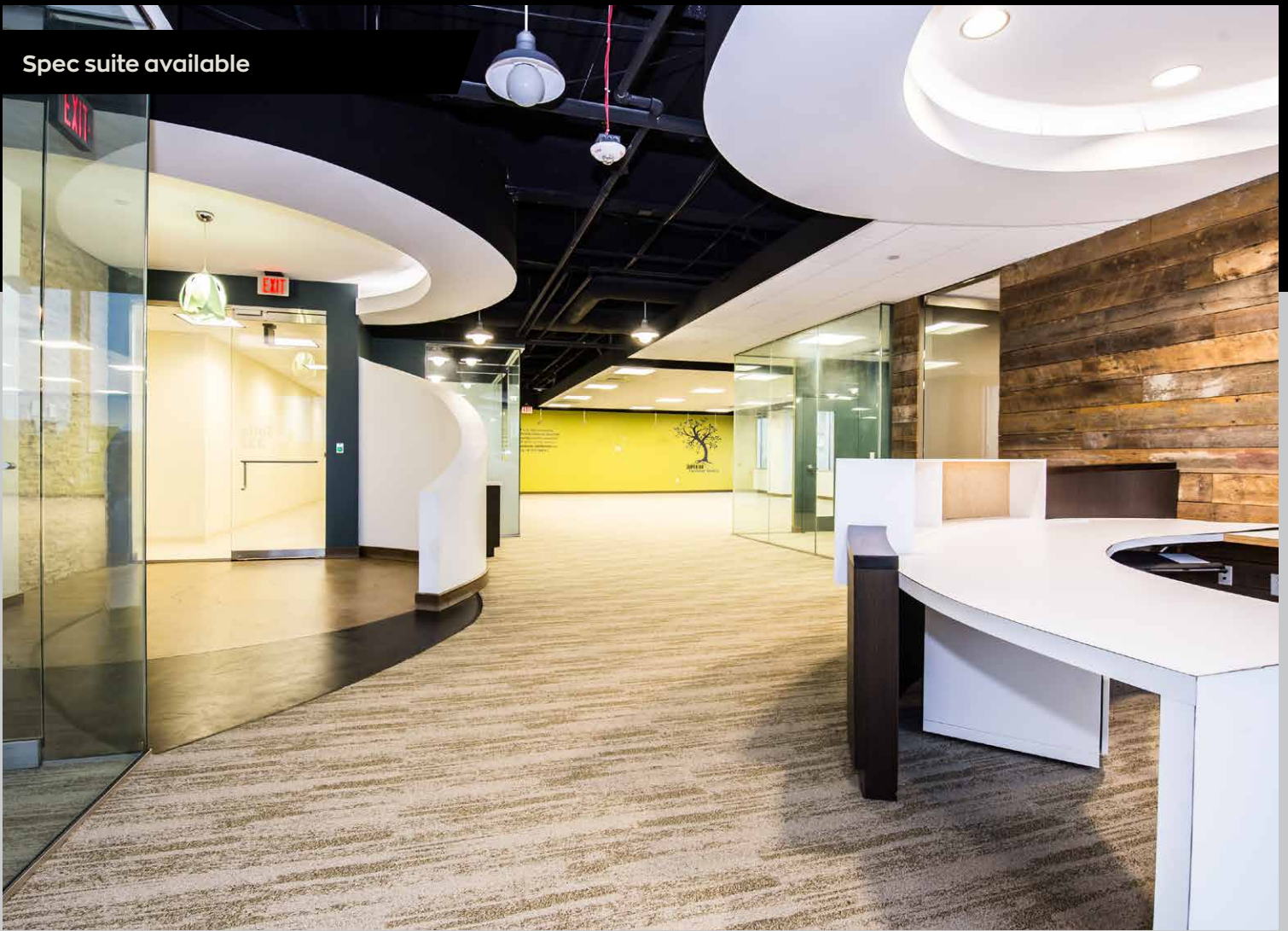
Conference facility



Upgraded hallways, elevators

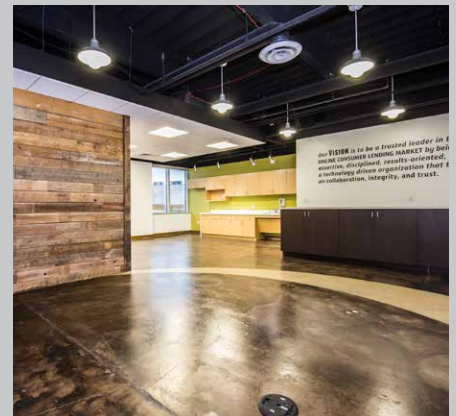
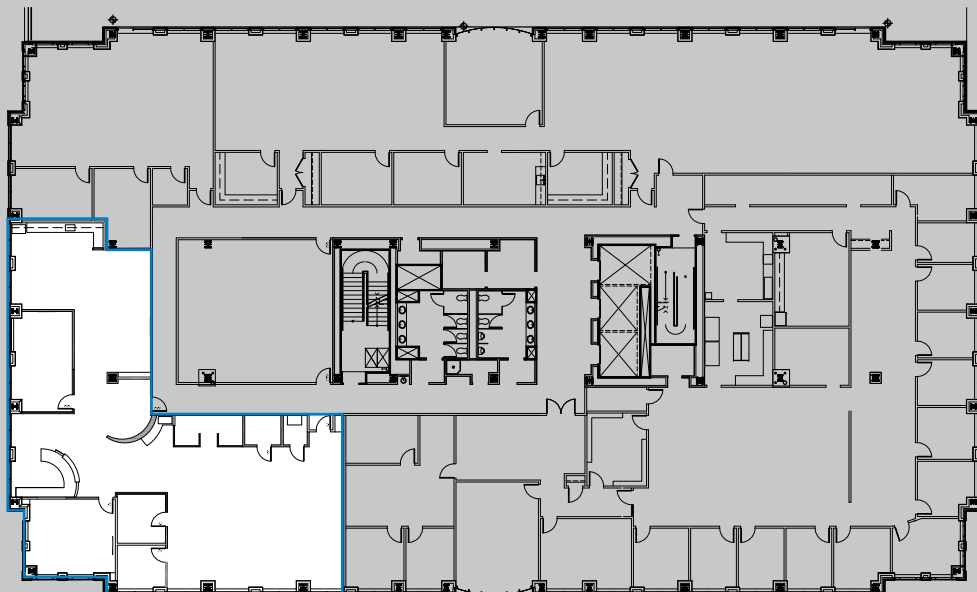


Spec suite available

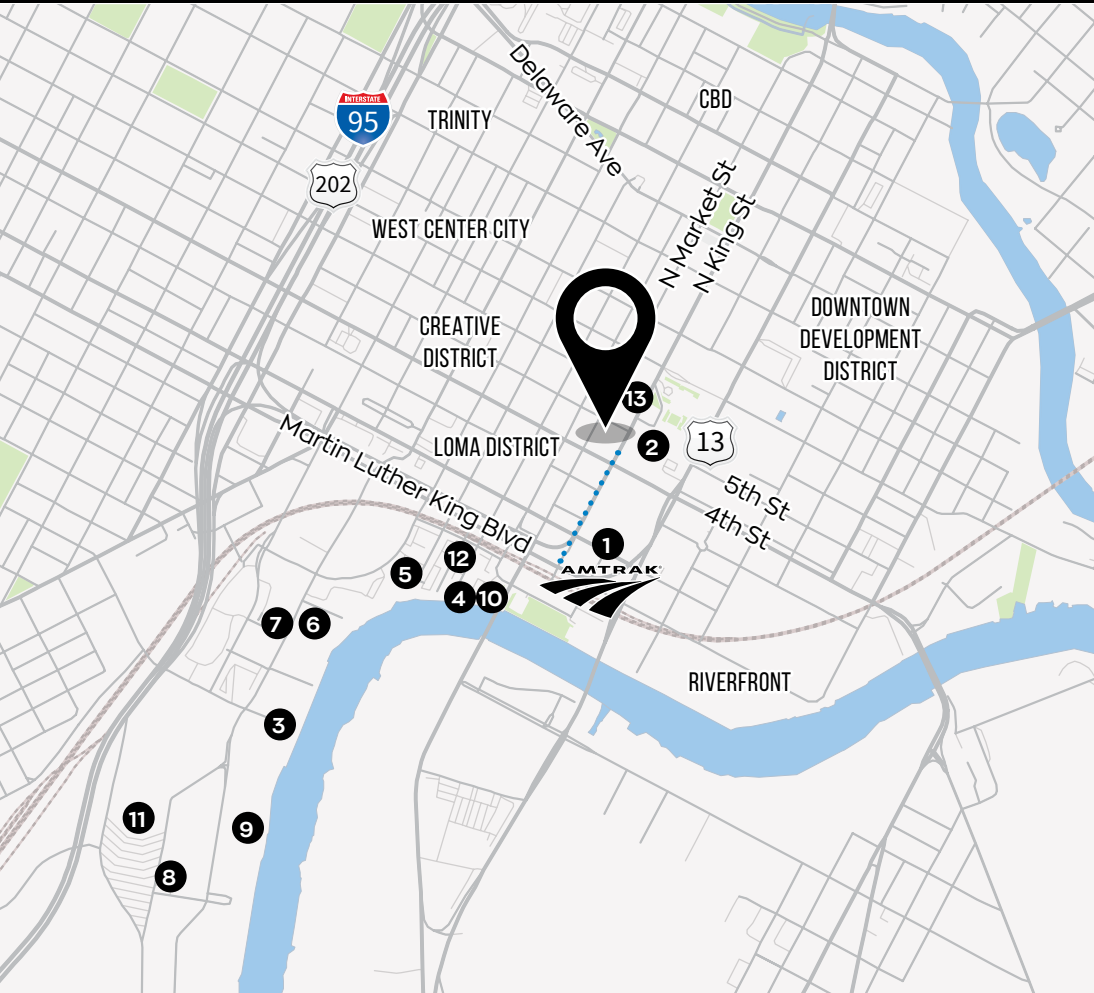


Exquisitely designed and finished spec suite

- 4,640 Square Feet, 3rd Floor
- Creative office layout with exposed ceilings, designer finishes, mix of open workspace, collaborative areas, private offices, and kitchen/cafe



PRIME WILMINGTON OFFICE LOCATION



Location highlights:

- Located directly across from the New Castle County Courthouse
- Five minute walk to the Wilmington Train Station (Amtrak)
- Easy access to I-95 and Route 13
- Walking distance to Riverfront and LOMA District

96 **Walk Score**
"Walker's Paradise"

68 **Transit Score**
"Excellent Transit"

70 **Bike Score**
"Very Bikeable"

NEARBY BUSINESS AND AMENITIES INCLUDE:

Highlights

- ① Amtrak Station
- ② Courthouse

Eat and Drink

- ③ Iron Hill
- ④ Banks Seafood

⑤ Docklands

- ⑥ Del Pez
- ⑦ Starbucks

Hotels

- ⑧ Hyatt Hotel
- ⑨ Westin Hotel

Activities and Entertainment

- ⑩ Riverfront Trail
- ⑪ Daniel S. Frawley Stadium
- ⑫ Riverfront Market
- ⑬ The Queen

LEASING INFORMATION

Jamie Vari
Vice President
+1 302 356 2862
jamie.vari@am.jll.com

Cindy Fleming
Associate Broker
+1 302 356 2866
cindy.fleming@am.jll.com

JLL | Jones Lang LaSalle
222 Delaware Avenue, suite 1610
Wilmington, DE 19801
+1 302 356 2858

THE
COMMONWEALTH
GROUP

