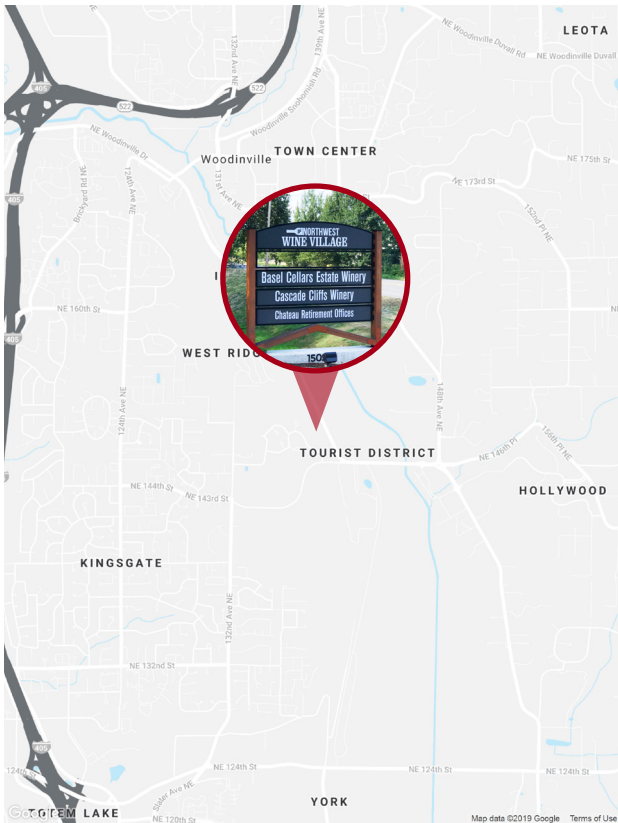


Restaurant Space for Lease in the heart of Wine Country

15029 Woodinville-Redmond Road NE, Woodinville, WA

Overview



A rare opportunity for second generation retail restaurant space in the **heart of Woodinville** nearby esteemed restaurants, wineries and Chateau Ste Michelle. Nearly plug and play, this space is ready for you to **bring your concept** just in time for the holiday party season. A great space for dining and a layout complimentary for private events and group dining. The brick paved patio is plumbed for gas heaters and has electrical junction box for lighting.

- Approximately 2,800 SF of restaurant space
- 1,700 SF patio
 - Wired for lighting
 - Plumbed for gas
- 12 foot Type 1 hood
- Ample parking
- Total Rent: \$10,328 per month
 - Base Rent: \$34.00 PSF, NNN (\$7,933 per month)
 - NNN Expenses: \$10.26 PSF (\$2,395 per month)

For more information, contact:

Kelly Gaddis

+1 206 332 1470

kgaddis@nai-psp.com



1700 Seventh Avenue Suite 2050

Seattle, Washington 98101

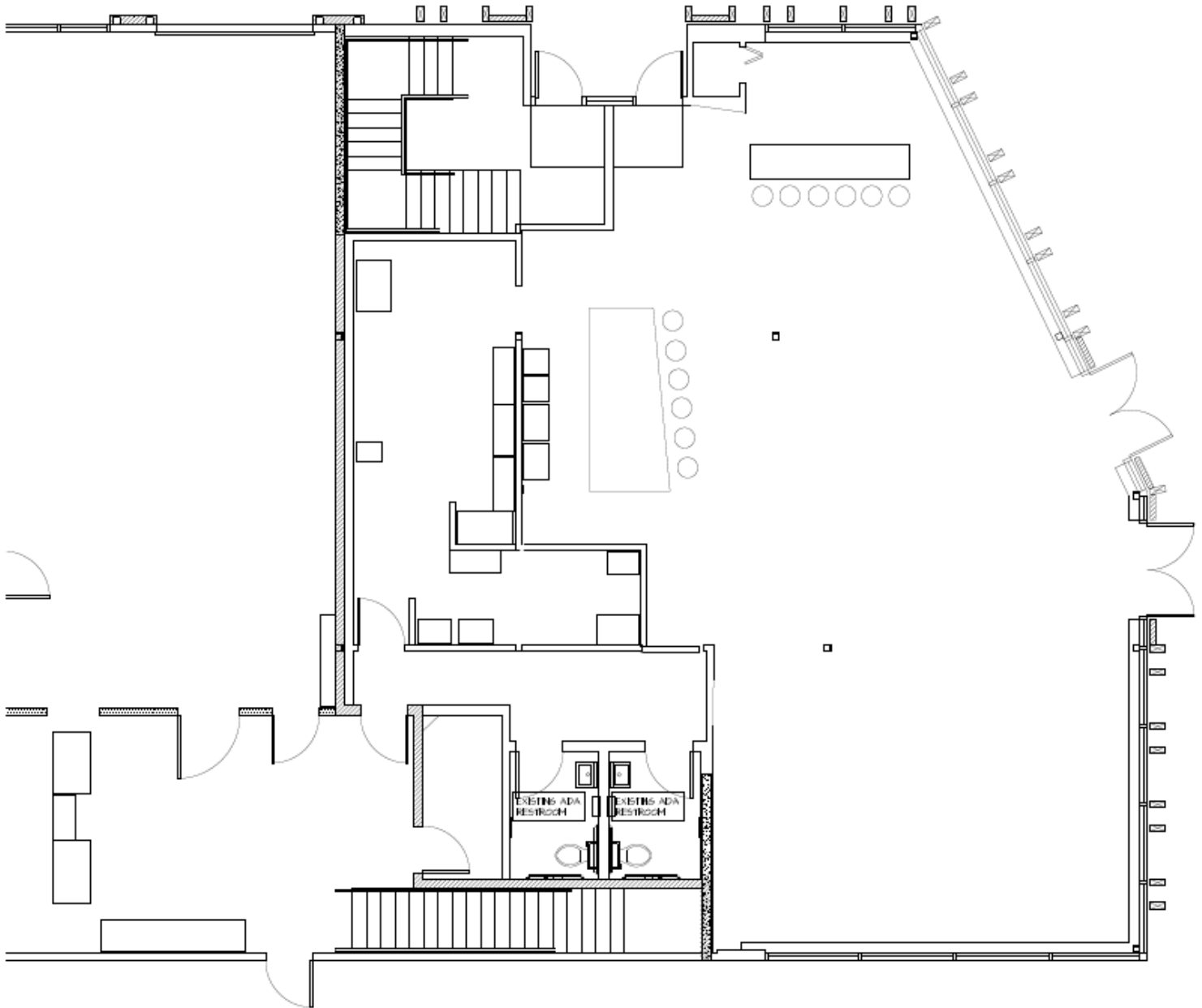
+1 206 332 1466

nai-psp.com

Restaurant Space for Lease in the heart of Wine Country

15029 Woodinville-Redmond Road NE, Woodinville, WA

Floor Plan



1700 Seventh Avenue Suite 2050
Seattle, Washington 98101
+1 206 332 1466
nai-psp.com

THE INFORMATION CONTAINED HEREIN HAS BEEN GIVEN TO US BY THE OWNER OF THE PROPERTY OR OTHER SOURCES WE DEEM RELIABLE, WE HAVE NO REASON TO DOUBT ITS ACCURACY, BUT WE DO NOT GUARANTEE IT. ALL INFORMATION SHOULD BE VERIFIED PRIOR TO PURCHASE OR LEASE. FLYERS\EASTSIDE\15029 WOODINVILLE-REDMOND ROAD NE

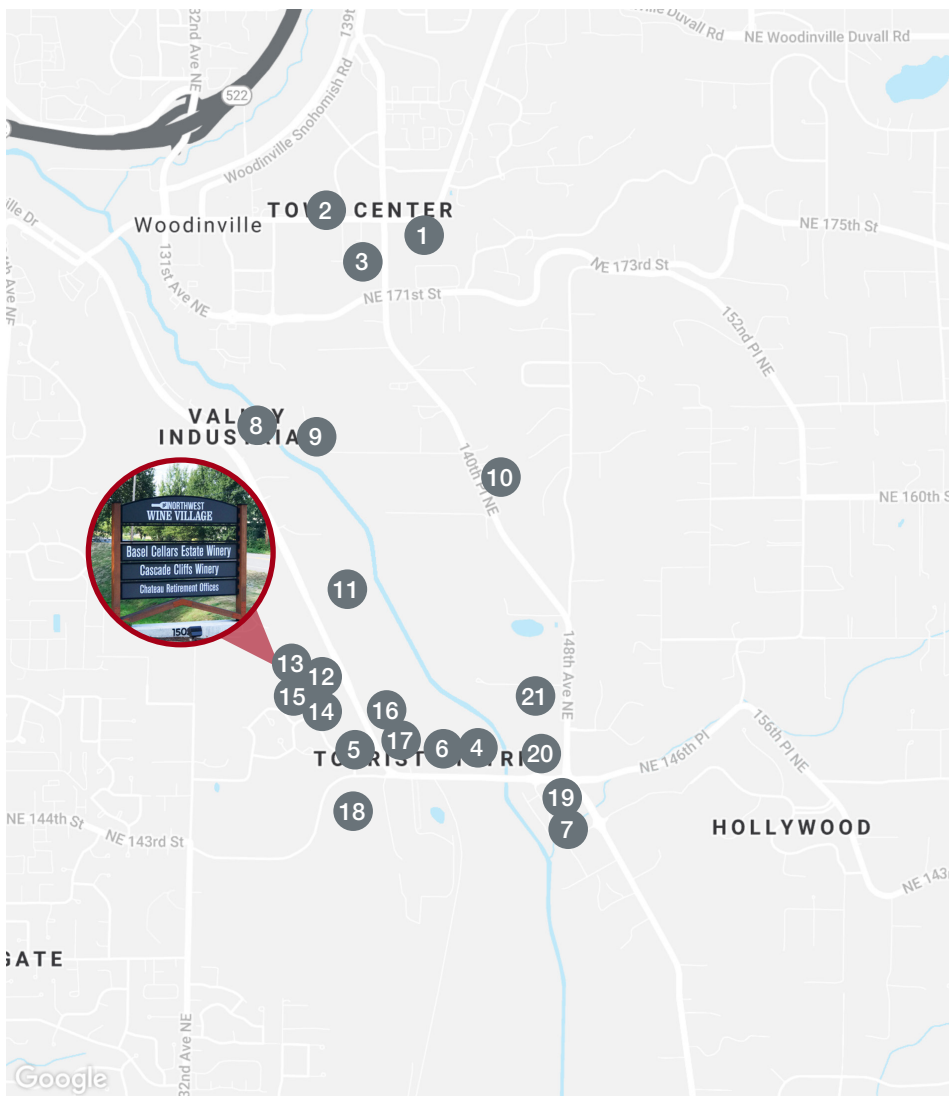
Restaurant Space for Lease in the heart of Wine Country

15029 Woodinville-Redmond Road NE, Woodinville, WA

Woodinville

There are **four distinct districts** in Woodinville, each with its own feel, flavor, and philosophy. Each district brings something fresh and unexpected to the table and makes a visit to Woodinville not one experience, but many. There are 118 wineries and tasting rooms, 14 microbreweries, cideries and distilleries, 30 eateries and restaurants.

Woodinville Wine Country is just **30 minutes northeast of Seattle**, nestled in the beautiful Sammamish River Valley, but it might as well be the other side of the world. This small, scenic valley is where the fruit of Eastern Washington meets the vintners, chefs and flavors of the Pacific Northwest. It's a delicious crossroads of winemaking, microbrewing, fine dining, and the people who pour their heart and soul into them.



Nearby Restaurants and Wineries

1. Tippy Cow - Woodinville
2. Big Fish Grill
3. Ezell's Famous Chicken
4. The Herbfarm
5. Hollywood Tavern
6. Barking Frog
7. Purple Cafe and Wine Bar
8. Stomani Cellars
9. Martedi Winery
10. Matthews Winery
11. The Woodhouse Winehouse Estates
12. Basel Cellars Woodinville
13. Cascade Cliffs Vineyard and Winery
14. Celaeno Winery
15. Isenhower Cellars
16. Novelty Hill Januik Winery
17. Columbia Winery
18. JM Cellars
19. Mark Ryan Winery
20. Gorman Winery Hollywood Hill Tasting Room
21. Silver Lake Winery

Map data ©2019 Google Terms of Use

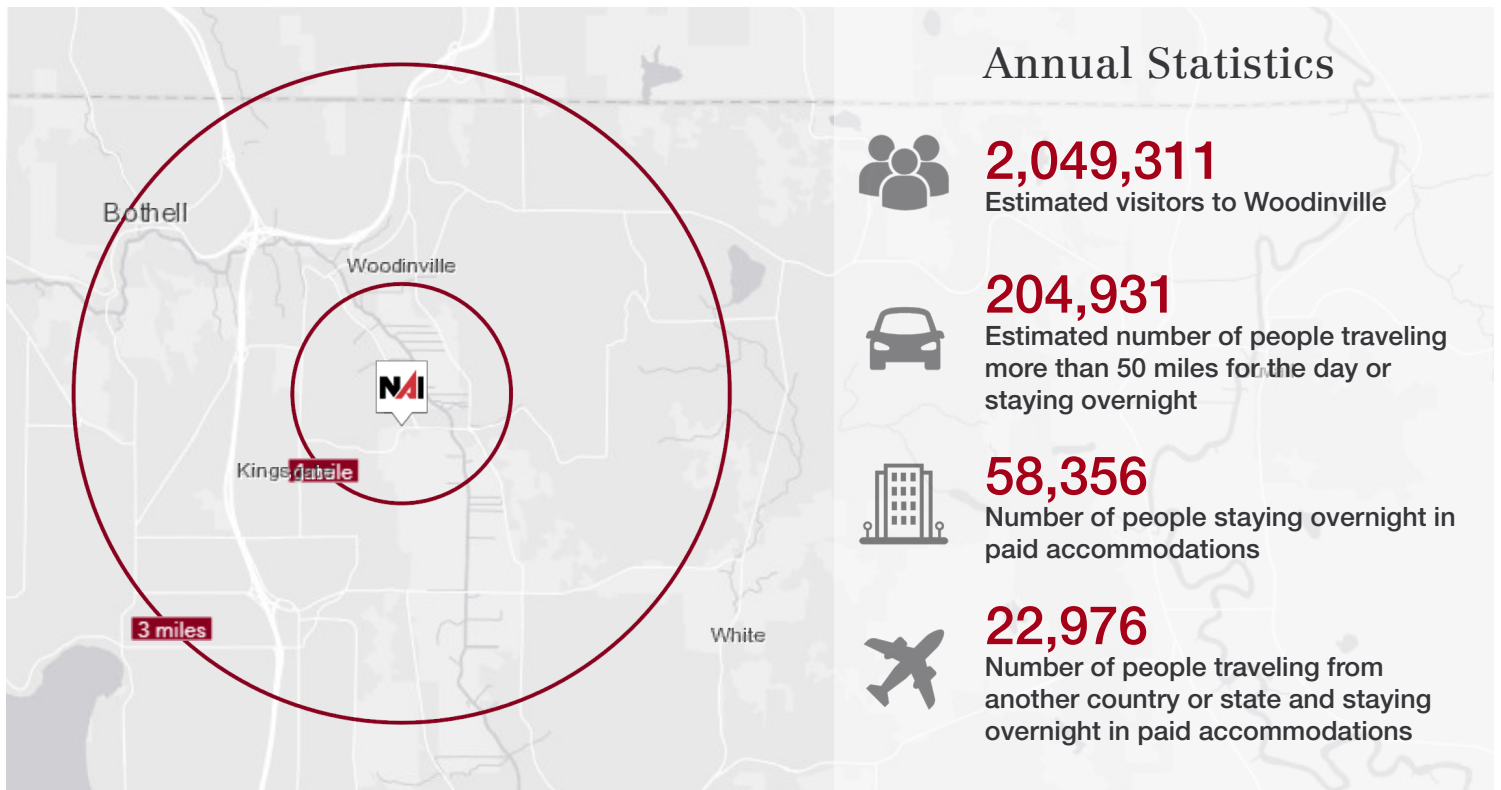


1700 Seventh Avenue Suite 2050
Seattle, Washington 98101
+1 206 332 1466
nai-psp.com

Restaurant Space for Lease in the heart of Wine Country

15029 Woodinville-Redmond Road NE, Woodinville, WA

Demographics



	KEY FACTS	BUSINESS	EMPLOYMENT
1 Mile Radius	6,060 Population	40.6 Median Age	307 Total Businesses
	144,485 2019 Average Household Income (Esri)	2,537 2019 Total Households (Esri)	3,843 Total Employees
			73% White Collar 12% Blue Collar 16% Services 4.1% Unemployment Rate
3 Mile Radius	83,841 Population	38.8 Median Age	3,711 Total Businesses
	145,305 2019 Average Household Income (Esri)	33,057 2019 Total Households (Esri)	46,597 Total Employees
			78% White Collar 11% Blue Collar 11% Services 3.9% Unemployment Rate



1700 Seventh Avenue Suite 2050
 Seattle, Washington 98101
 +1 206 332 1466
nai-psp.com

For more information
please contact:

Kelly Gaddis
+1 206 332 1470
kgaddis@nai-ppsp.com

