



Available for Lease

O'Hare Offices

1011 E. Touhy Ave | Des Plaines, Illinois

Highlights

- Five story office building offering views of Chicago O'Hare International Airport, Lake Opeka & downtown Chicago
- Features a three-story atrium, water feature, granite floors, etched glass and marble
- Beautiful natural light offers unencumbered views in all directions and the perfect first impression
- First floor includes a deli with seating area, fitness center complete with cardio and weight training equipment, deluxe locker room facilities and flat screen TV's
- Key-card system for after hours access for tenants safety and convenience
- Fully customizable office spaces
- Minutes from I-90 & I-294
- Located in close proximity to numerous dining & hotel options, Fashion Outlets of Chicago, Rivers Casino, multiple theaters, O'Hare International Airport and more!

Available

Suite	Square Feet
200	7,060
245	12,096
2nd Floor	1,188 - 19,156
315	5,787
345	2,250
375	2,499
390	9,495
3rd Floor	2,250 - 20,031
425	10,305
480	2,904
500	26,695
550	1,858

Pricing

- Lease Price: \$21.00 PSF Modified Gross

For More Information, Contact: WWW.OHAREOFFICES.COM

Tony Russo

D: 630.729.7935
M: 630.810.0300 Ext. 112
trusso@cawleychicago.com

Rawly Lantz

D: 630.729.7944
M: 630.810.0300 Ext. 116
rlantz@cawleychicago.com

Ryan Freed

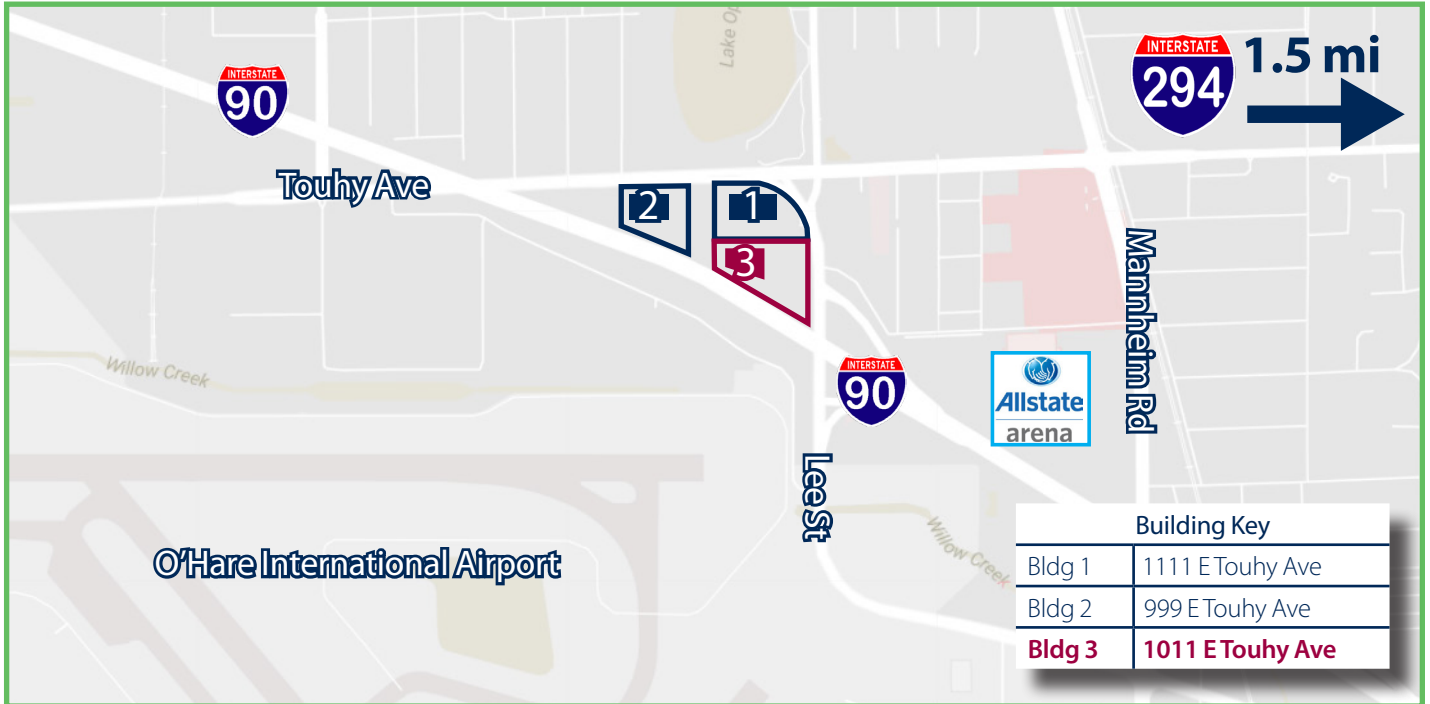
D: 630.729.7947
M: 630.810.0300 Ext. 117
rfreed@cawleychicago.com

Aerial View - 1011 E. Touhy Ave

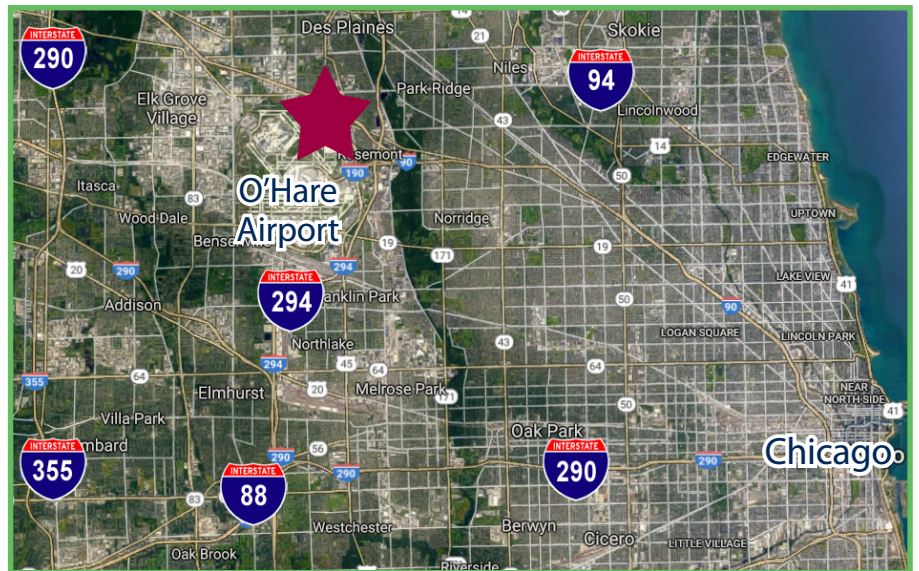
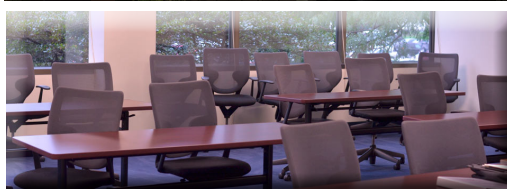
O'Hare Offices

About Owner | Management

Representing 450,000 of square feet of office space, O'Hare Offices professional, on-site management team anticipates and adapts to the business needs of its tenants, providing those with an O'Hare Offices address the highest level of service and value.



Building Key	
Bldg 1	1111 E Touhy Ave
Bldg 2	999 E Touhy Ave
Bldg 3	1011 E Touhy Ave



For More Information, Contact:

Tony Russo

D: 630.729.7935
 M: 630.810.0300 Ext. 112
trusso@cawleychicago.com

Rawly Lantz

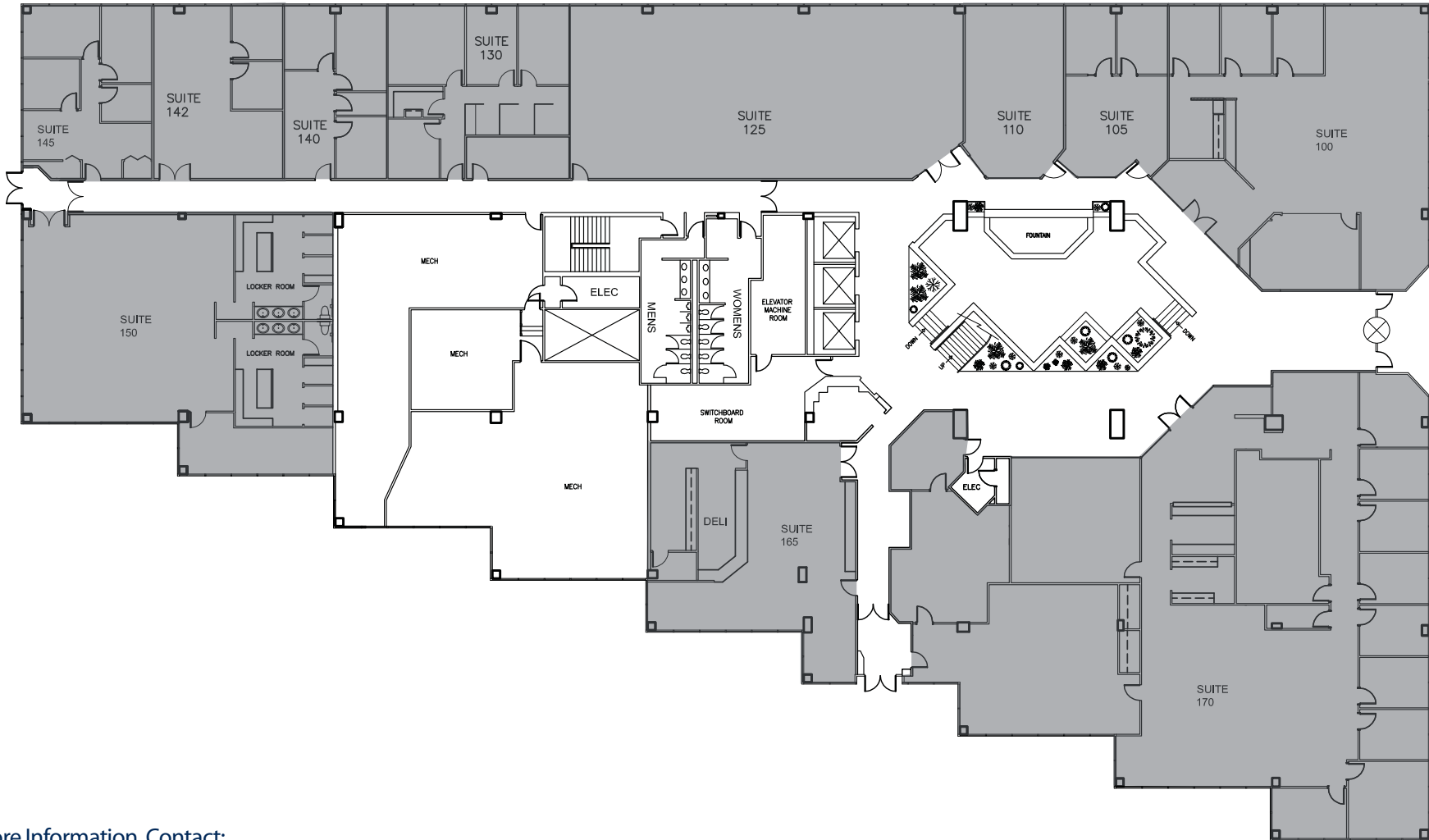
D: 630.729.7944
 M: 630.810.0300 Ext. 116
rlantz@cawleychicago.com

Ryan Freed

D: 630.729.7947
 M: 630.810.0300 Ext. 117
rfreed@cawleychicago.com

Building Plan

1st Floor | 1011 E. Touhy Ave



For More Information, Contact:

Tony Russo

D: 630.729.7935

M: 630.810.0300 Ext. 112

trusso@cawleychicago.com

Rawly Lantz

D: 630.729.7944

M: 630.810.0300 Ext. 116

rlantz@cawleychicago.com

Ryan Freed

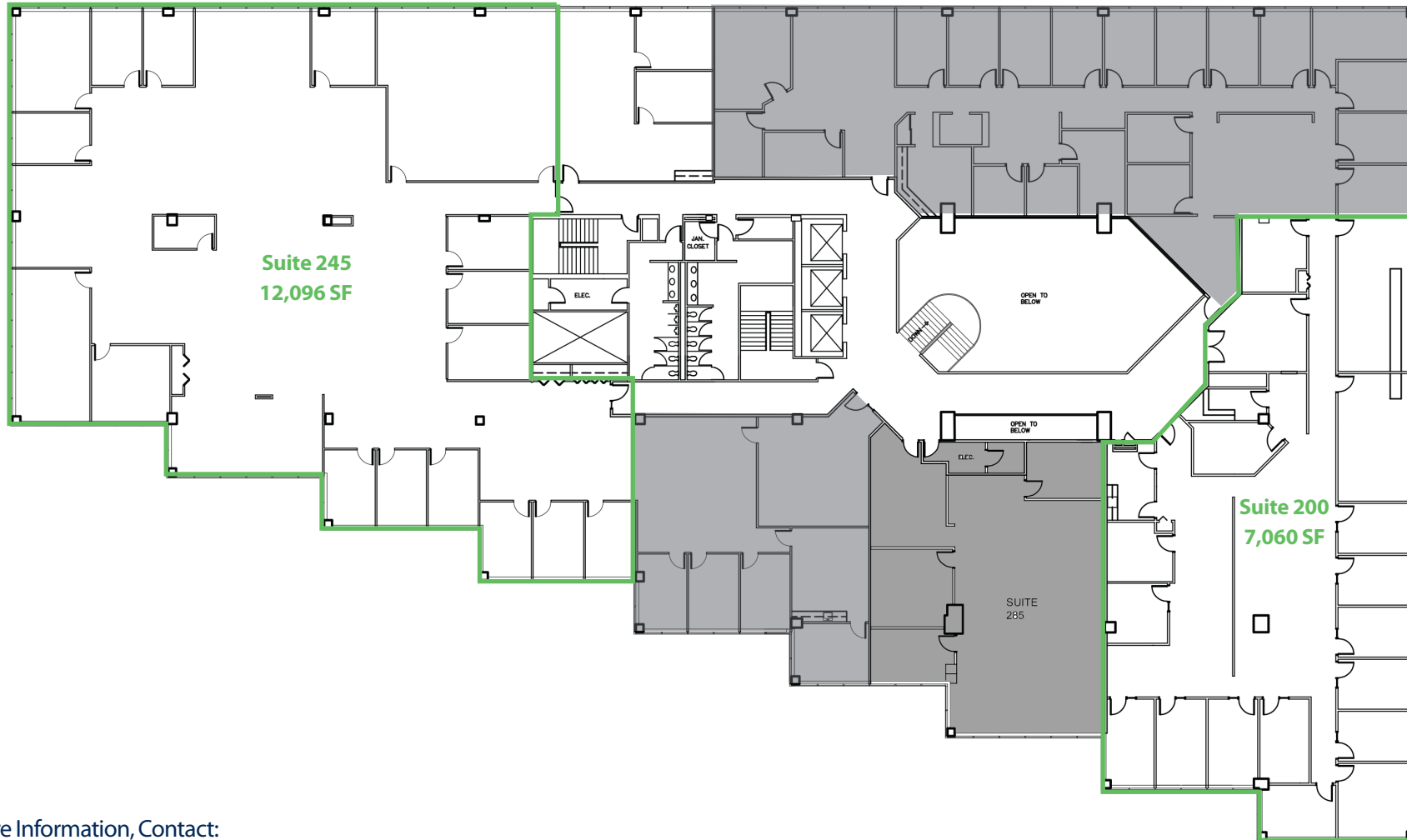
D: 630.729.7947

M: 630.810.0300 Ext. 117

rfreed@cawleychicago.com

Building Plan

2nd Floor | 1011 E. Touhy Ave



For More Information, Contact:

Tony Russo

D: 630.729.7935

M: 630.810.0300 Ext. 112

trusso@cawleychicago.com

Rawly Lantz

D: 630.729.7944

M: 630.810.0300 Ext. 116

rlantz@cawleychicago.com

Ryan Freed

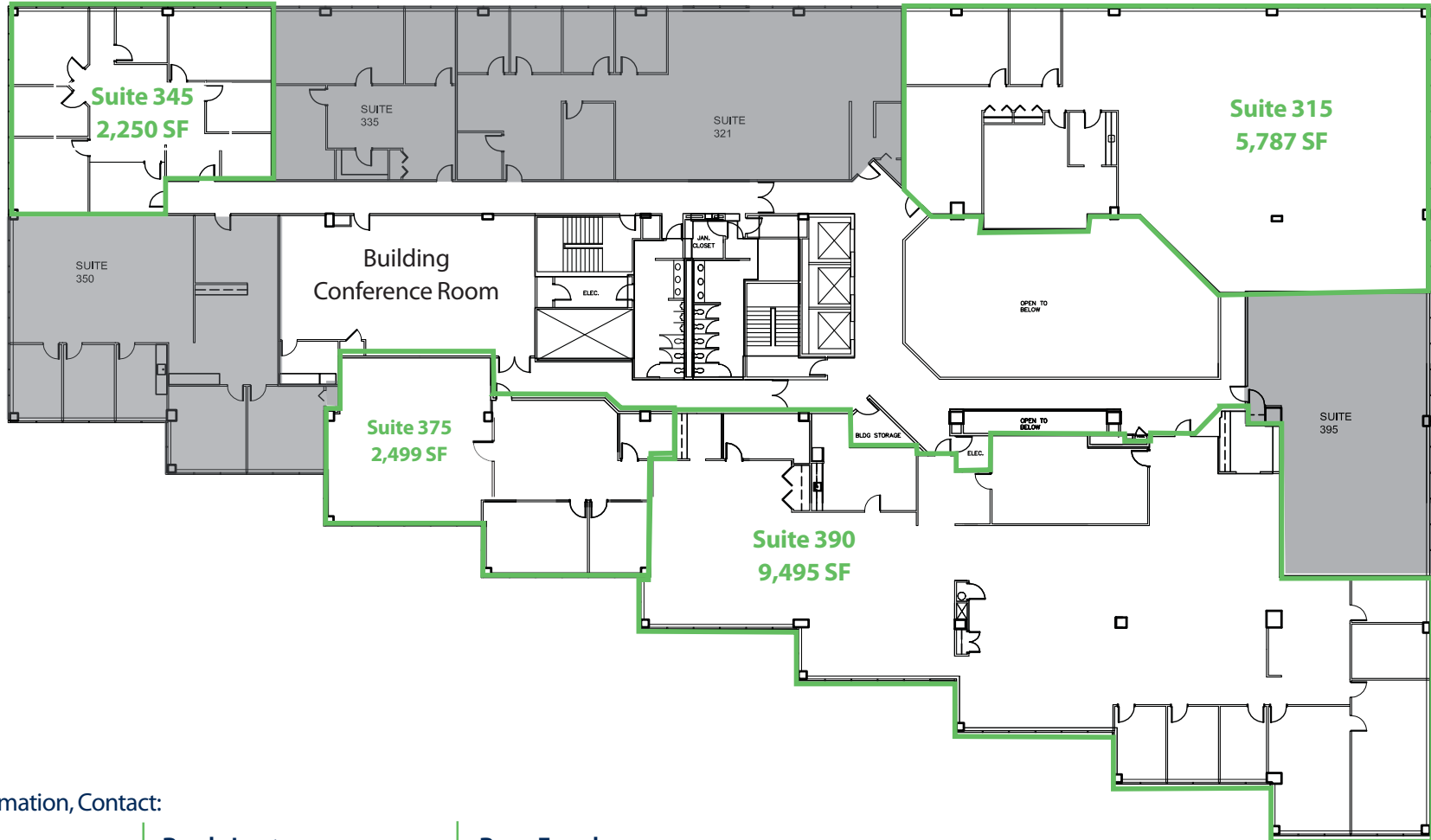
D: 630.729.7947

M: 630.810.0300 Ext. 117

rfreed@cawleychicago.com

Building Plan

3rd Floor | 1011 E. Touhy Ave



For More Information, Contact:

Tony Russo

D: 630.729.7935

M: 630.810.0300 Ext. 112

trusso@cawleychicago.com

Rawly Lantz

D: 630.729.7944

M: 630.810.0300 Ext. 116

rlantz@cawleychicago.com

Ryan Freed

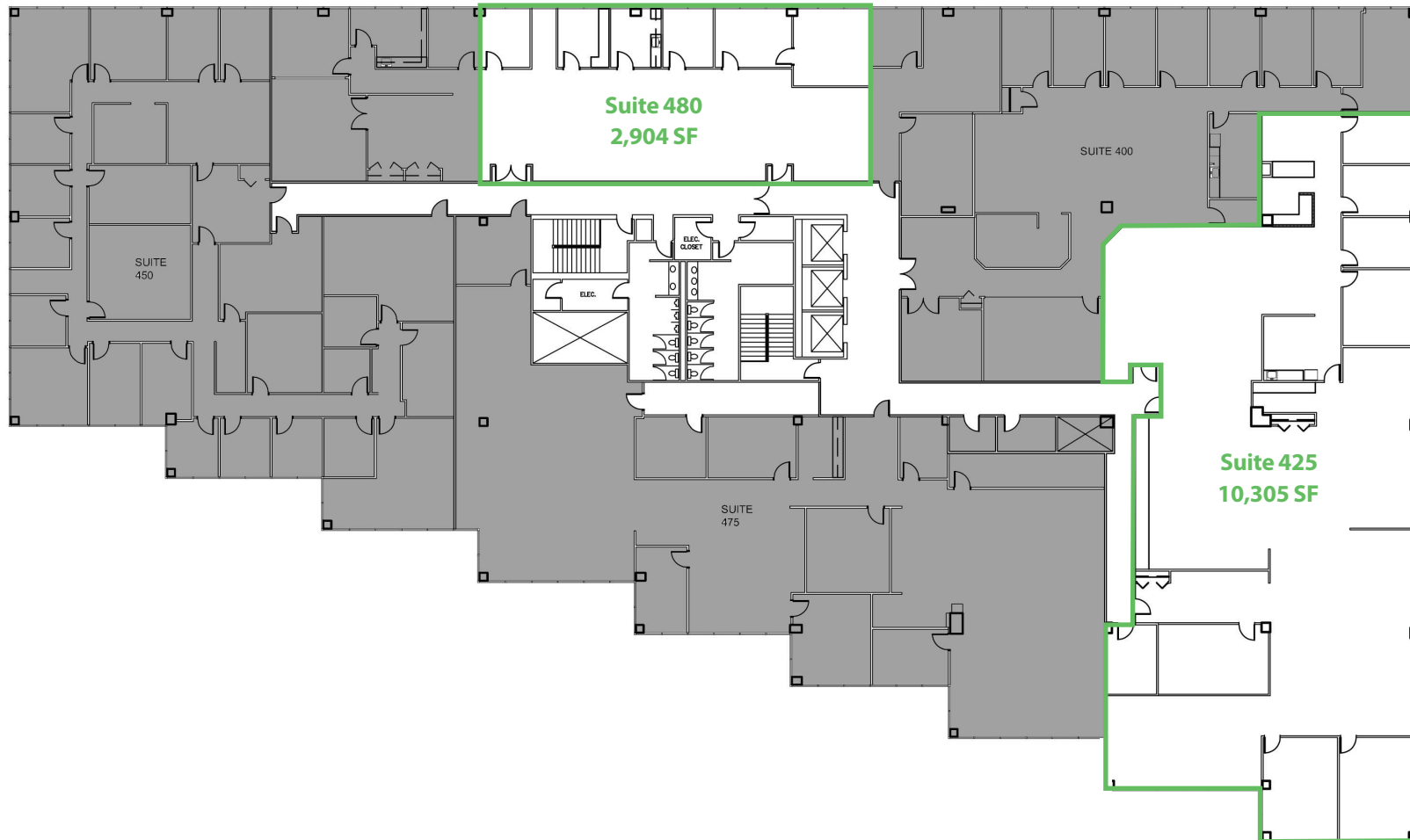
D: 630.729.7947

M: 630.810.0300 Ext. 117

rfreed@cawleychicago.com

Building Plan

4th Floor | 1011 E. Touhy Ave



For More Information, Contact:

Tony Russo

D: 630.729.7935

M: 630.810.0300 Ext. 112

trusso@cawleychicago.com

Rawly Lantz

D: 630.729.7944

M: 630.810.0300 Ext. 116

rlantz@cawleychicago.com

Ryan Freed

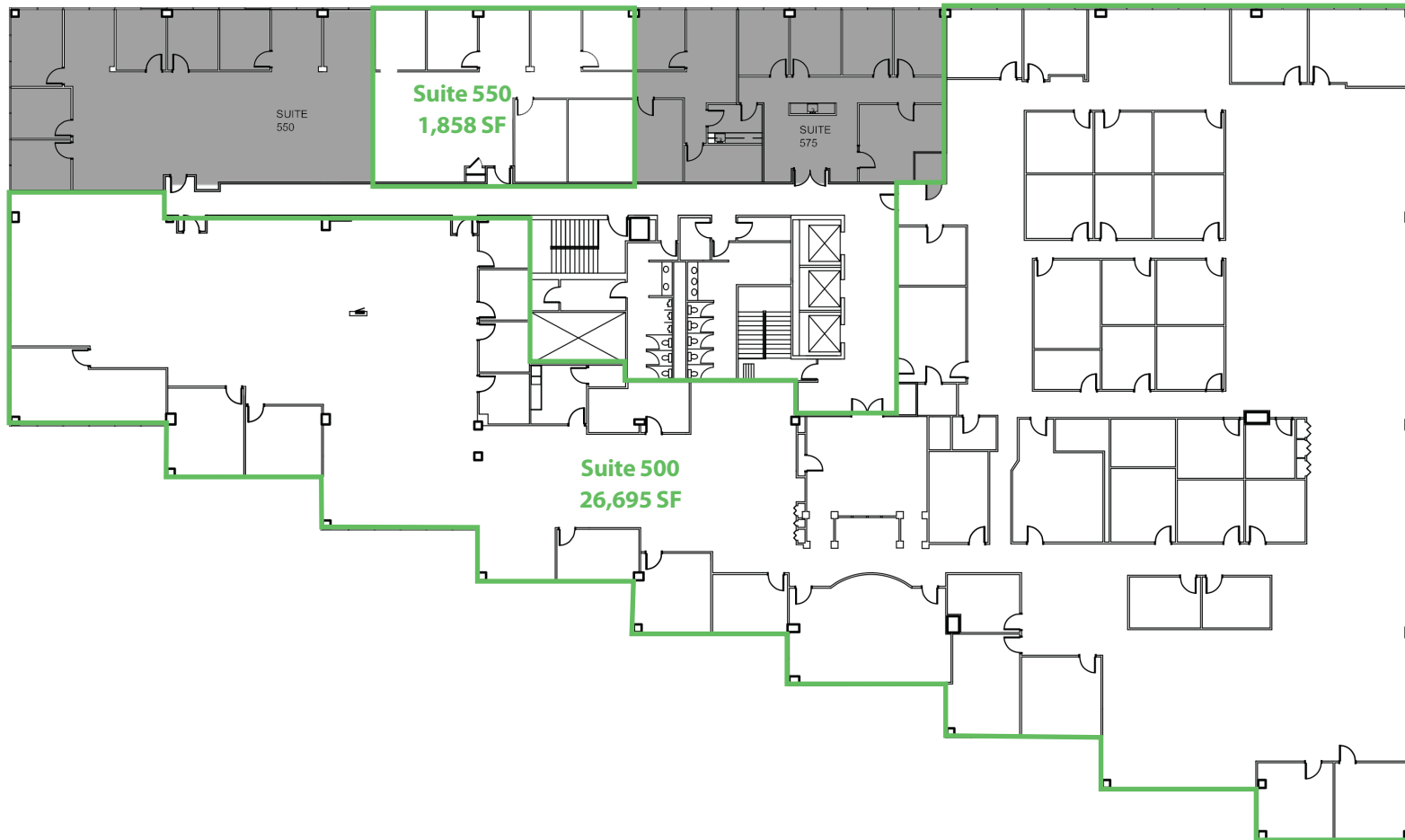
D: 630.729.7947

M: 630.810.0300 Ext. 117

rfreed@cawleychicago.com

Building Plan

5th Floor | 1011 E. Touhy Ave



For More Information, Contact:

Tony Russo

D: 630.729.7935

M: 630.810.0300 Ext. 112

trusso@cawleychicago.com

Rawly Lantz

D: 630.729.7944

M: 630.810.0300 Ext. 116

rlantz@cawleychicago.com

Ryan Freed

D: 630.729.7947

M: 630.810.0300 Ext. 117

rfreed@cawleychicago.com