

LAND FOR LEASE OR SALE

1025 McFarland St.

Wilmington, CA 90744

Voit

REAL ESTATE SERVICES



GREAT LOCATION!

Property Highlights

- Port Area Truck Yard
- One Block From Overweight Corridor
- Truck Parking, Recycling, Manufacturing Possible
- Five Blocks to Port
- Fully Fenced, Rail Possible
- 14,877 SF of Office and Warehouse
- 3 Dock High Loading Positions
- Truck Scale

Property Features

Land Area: 62,287 SF

Building Area: 14,877 SF

Offering Price

Sale: \$1,993,184

\$32.00 per square foot

Lease: \$15,571 per month gross

\$0.25 per square foot

David Fults

Senior Vice President

Lic #01242123

323.558.5404

dfults@voitco.com

Brian McLoughlin

Senior Vice President

Lic #01268410

323.558.5403

bmcloughlin@voitco.com

Derek deVrè

Vice President

Lic #01457028

323.558.5405

devre@voitco.com

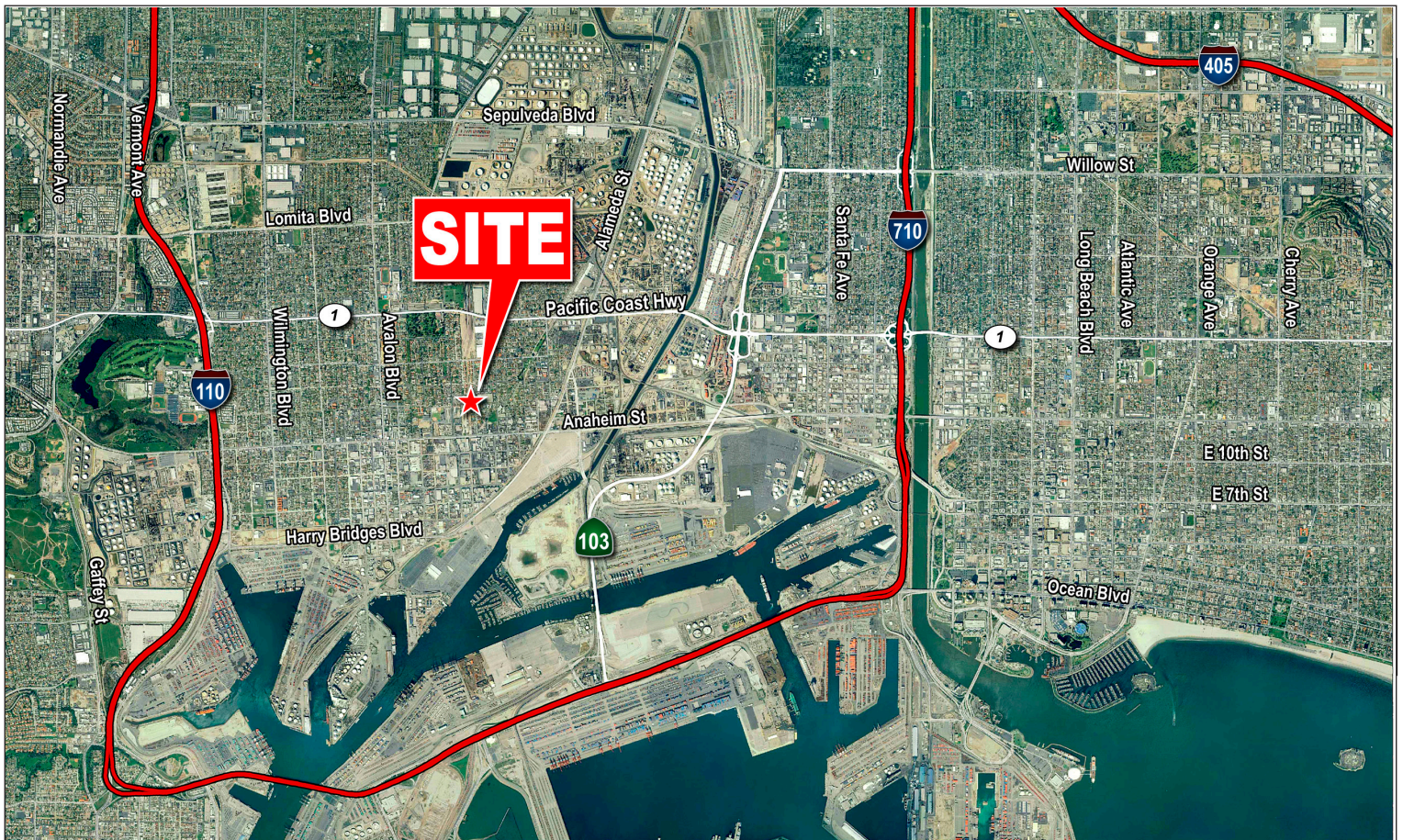
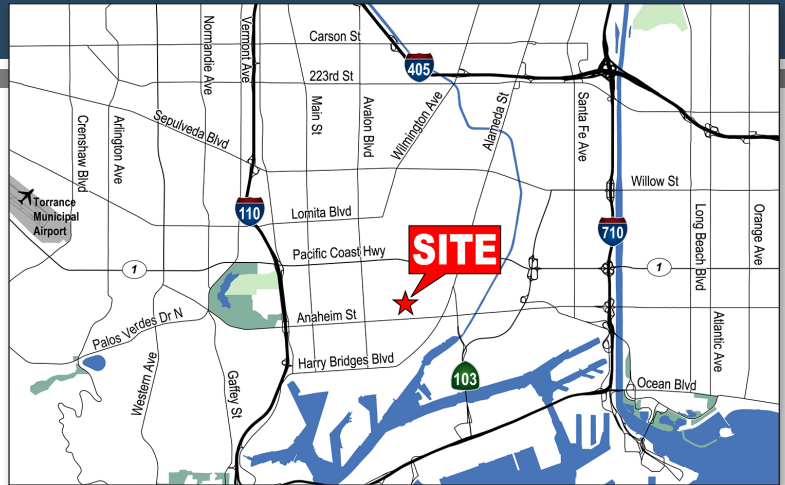
500 Citadel Drive, Suite 310, Commerce, CA 90040 • 323.558.5400 • 323.372.3949 Fax • Lic #01333376 | www.voitco.com

Real People. Real Solutions.®

LAND FOR LEASE OR SALE

1025 McFarland St.

Wilmington, CA 90744



David Fults
Senior Vice President
Lic #01242123
323.558.5404
dfults@voitco.com

Brian McLoughlin
Senior Vice President
Lic #01268410
323.558.5403
bmcloughlin@voitco.com

Derek deVrè
Vice President
Lic #01457028
323.558.5405
devre@voitco.com

Voit
REAL ESTATE SERVICES

500 Citadel Drive, Suite 310, Commerce, CA 90040 • 323.558.5400 • 323.372.3949 Fax • Lic #01333376 | www.voitco.com

The information contained herein has been obtained from sources we deem reliable. While we have no reason to doubt its accuracy, we do not guarantee it.
©2012 Voit Real Estate Services, Inc. All Rights Reserved. Real People. Real Solutions.® is a registered trademark of Voit Real Estate Services.